

HADRON

USER MANUAL

www.sunslice-solar.com

I. INTRODUCTION

Thank you for your purchase. We hope you will have a great experience using the Sunslice Hadron.



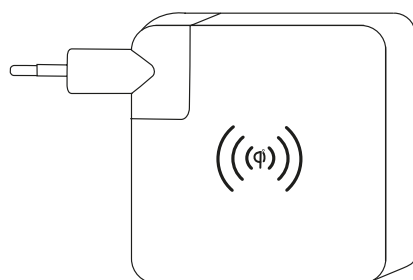
The Sunslice Hadron has been developed with the ultimate goal to give people access to energy everywhere.

Travellers, but also users in their daily life, will have a great use of this power adapter with integrated powerbank as it finally makes it possible for the user to carry an always loaded powerbank when using it every day as its general power adapter to charge its phone.

This manual contains important safety and product care information, as well as step-by-step instructions for using your Hadron. To get the greatest benefit from your purchase, we recommend you read the manual thoroughly, and keep it in a safe place in case you need to refer to it later.

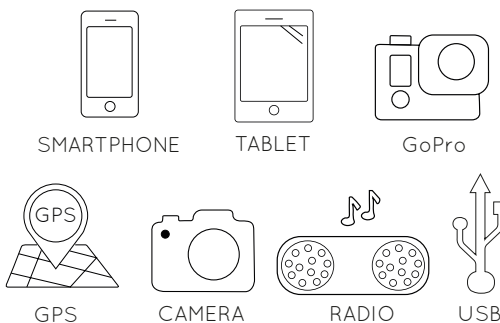
Geoffroy & Henri

IN THE BOX



Hadron

COMPATIBLE WITH



II. PRODUCT OVERVIEW

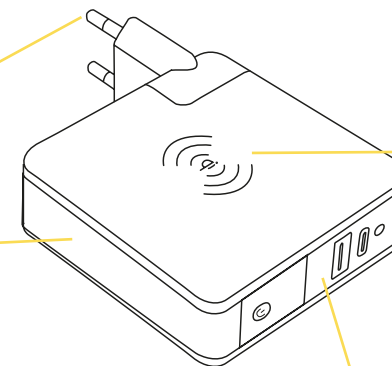
European Standard Plug (AC Input)

Capacity : 6'700 mAh (3.7V) /24.8Wh

240g

15W Qi

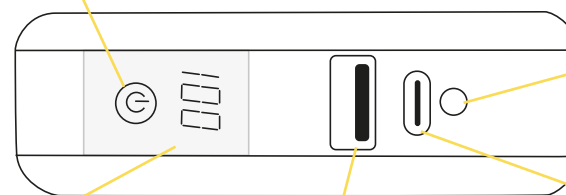
Wireless Charging
Place your phone, equipped with wireless technology, on the Hadron. Press the POWER Button and the phone will start charging automatically.



USB INTERFACE

POWER BUTTON

Push to allow charging



CHARGING INDICATOR

LCD SCREEN

Remaining capacity indicator

USB QC3.0 18W

Output 5V/2.4A - 9V/2A - 12V/1.5A

USB-C PD 18W

Output 5V/3A - 9V/2A - 12V/1.5A
Input 5V/2A - 9V/2A

III. KEY FEATURES

- INTEGRATED 6'700 mAh POWERBANK
- 2 IN 1 CHARGER + POWERBANK
- EU PLUG (CHANGEABLE)
- WIRELESS CHARGING
- SMALL SIZE
- 2 USB OUTPUTS
- INNOVATIVE DESIGN
- LIGHTWEIGHT

IV. SPECIFICATIONS

BATTERY OUTPUT TOTAL 18W MAX

5V/3A , 9V/2A , 12V/1.5A - 18W USB-C PD
5V/2.4A - 9V/2A - 12V/1.5A - 18W USB QC3.0

BATTERY INPUT TOTAL 18W MAX

5V/2A , 9V/2A - 18W USB-C PD

POWER ADAPTER TOTAL 15W MAX

100-240V-50/60Hz 0.3A AC INPUT
5V/3A - 15W AC OUTPUT

WIRELESS CHARGING 5V/3A - Qi 15W

WEIGHT 240g

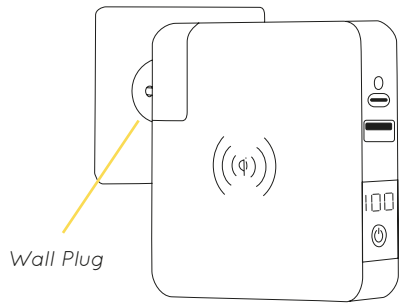
DIMENSIONS 80 x 80 x 29 mm

CHARGE STATUS LCD Display Screen

V. CHARGE THE POWERBANK

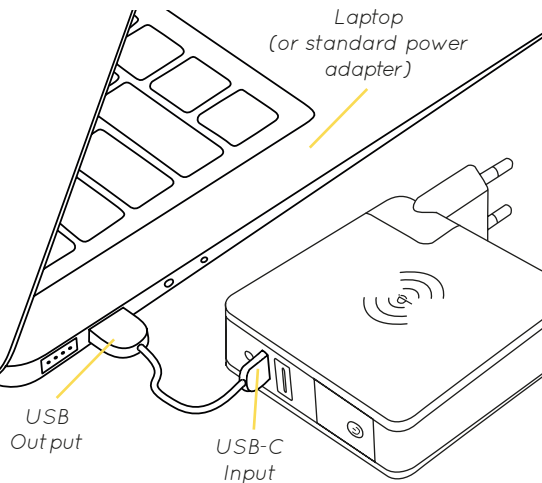
The Sunslice Hadron is equipped with an integrated powerbank. This powerbank can be charged in two different ways.

Directly in the wall plug



The Hadron can be charged up directly by plugging the Hadron into the wall plug.

Via USB-C input



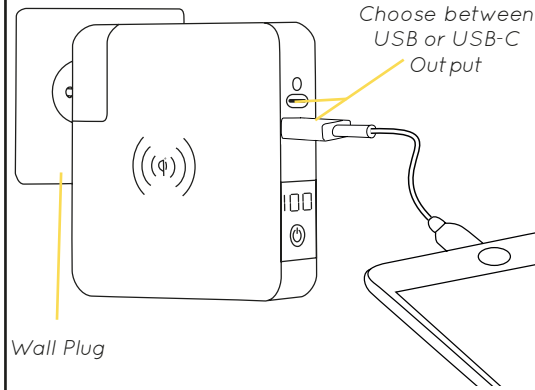
Charge the Hadron up by connecting a USB cable from a laptop or another power source* to the Hadron's USB-C Input.

*e.g. Power Adapter

VI. CHARGE YOUR DEVICE

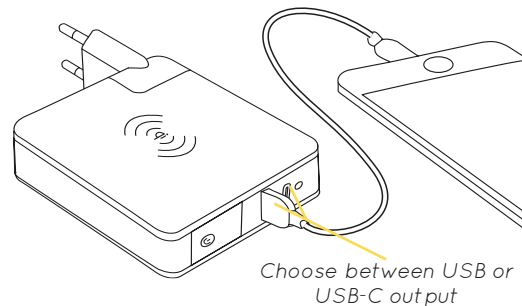
There are two different ways to charge your device with the Hadron. The powerbank can be used as a powerbank or as a standard wall power adapter.

As a power adapter



Plug the Hadron into the wall plug and connect your device with your charging cable to the intended USB Output (Cfr. II. Product Overview).

As a powerbank



To charge your device when on the go, use the Hadron as a normal powerbank. One USB output and one USB-C output are therefore provided. ***Please note that if you want to charge another powerbank with the Hadron and you are using a USB-C to USB-C cable, the devices will choose themselves which device is charging the other.

VII. OUR WARRANTIES

PREMIUM QUALITY

We select the finest materials to insure the highest quality and durability for all of our products.

PROTECTION CIRCUIT

The Sunslice Hadron is equipped with a voltage stabilising circuit to avoid damaging your devices.

2 YEARS WARRANTY

The Hadron has a 2 year warranty. In case something goes wrong, please contact us directly by email at :

service@sunslice-solar.com

Before contacting us, please have a look at our FAQ at :

www.sunslice-solar.com/apps/help-center



VIII. PRECAUTIONS

- If the Hadron does not charge your device, please read this user manual again. If the problem lasts, please contact us.
- Do not puncture, throw, drop, bend or modify your Sunslice Hadron.
- Do not leave the Sunslice Hadron out in the rain, keep away from water. Do not expose the Hadron to fire or excessive heat.
- Do not short-circuit the battery with lead or any metal objects.
- Keep the battery ports free from dust, lint, etc that may prevent proper connections.
- Please fully charge the powerbank after a long period of storage as it may discharge slowly with time.
- Do not use excessive force when connecting and disconnecting cables to/from the Hadron.
- Do not disassemble the charger or change its structure in any way.
- Stop using the Sunslice Hadron if it generates unusual smell, heating, distortion or any other abnormality.
- Keep away from children.

You are welcome on our website to learn more about our products.

www.sunslice-solar.com

Sunslice SRL
Chemin du Cyclotron 6,
1348 Louvain-la-Neuve, Belgium