



BLUETOOTH REMOTE CAMERA SHUTTER WITH ZOOM FUNCTION

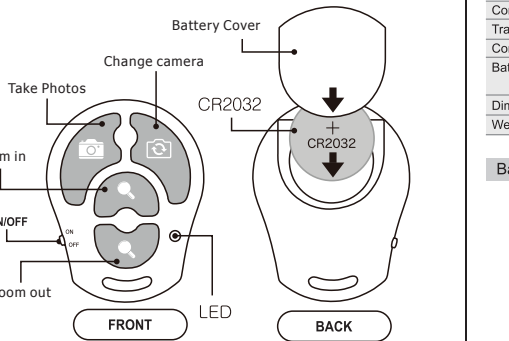
FOR iOS/ANDROID™ 1



DE: Eine Anleitung in Deutsch finden Sie unter:
 ES: Para obtener instrucciones en Español por favor visite:
 FR: Pour obtenir des instructions en français s'il vous plaît aller à:
 IT: Per istruzioni in italiano si prega di visitare il sito:
www.igadgitz.com/guides

¹ See compatibility

Product illustration

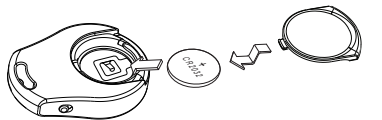


Specification

MODEL NO: iGadgitzBRS2

Communication	Bluetooth Version. 3.0
Transmit frequency	2.4GHz ~ 2.4835GHz
Communication distance	10m(30ft)
Battery life	CR2032 x1 cell / about 6 months under working in 10 times a day
Dimension	48mm x37mm x 11mm
Weight	12g

Battery



* Positive pole upwards to install the battery
 * Do not insert any other way

How To Use



1. Pairing

- Turn on the shutter by switching the on/off button. The shutter will enter pairing mode and LED will flash. Keep shutter & device within 1m when pairing.
- Activate the Bluetooth function on your device and scan for devices
- Select iGadgitzBRS2 and pairing will be completed in a few seconds

2. Open App

Use with inbuilt camera app on Android. For iOS either use inbuilt App or download "BT Shutter"² from the App Store for more features.

3. Shoot

Use in built camera or select camera app and press appropriate buttons on the shutter to take photos.

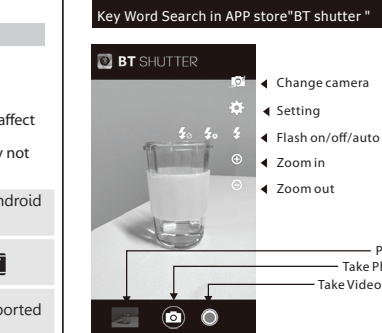
¹ Compatability

The Bluetooth Remote Shutter is compatible with Android and iOS devices from 2010 onwards that operate Bluetooth 3.0 or higher. Please note, changes to your Android or iOS operating system may affect compatibility. Other third party camera Apps can be used but some functions may not work.

	iOS	Samsung Android	Other Android
With inbuilt camera			
Using 'BTShutter' app ²		not supported	not supported

BT Shutter

Key Word Search in APP store "BT shutter" Scan QR code



² BTShutter is a third party App. INNOV8 BG Ltd is not responsible for the application. Illustration for reference only.

Troubleshooting

- Should your Bluetooth Remote shutter fail to activate after pairing, turn off both your Remote shutter and Smart Device. Now switch on the Remote Shutter, wait approx. 10 seconds, then the Bluetooth on your Smart Device and reconnect them via your Bluetooth function.
- If your remote shutter has not activated after updating your operating system try returning to your previous operating system.
- If your remote shutter fails to activate after pairing on your first use, try updating your Operating system.
- If your remote shutter fails to turn on try replacing the battery (CR2032).
- Zoom not working?
 iOS – check you are using the BT Shutter App. Buttons will not work with in-built camera.
 Samsung Android – check you are using in-built camera
 Other Android – feature not supported
- Change camera button not working?
 iOS – check you are using the BT Shutter App. Button will not work with in-built camera.
 Other operating systems – feature not supported

Important Notes

Users are not permitted to make changes or modify the product and accessories in any way
 To avoid electronic interference and/or compatible conflicts, TURN OFF the product in any facilities where posted notices instruct you to do so. For example: Aircraft, Military Base, Hospital or Health Care Facilities. Keep away from fire, water, and high voltage equipment. Do not install, place or use the device near any source of heat such as a cooker, radiator, oven, toaster, coffee maker or other apparatus (including microwave ovens) that gives off heat. It is recommended to keep the environment temperature between 15°C & 25°C
 Do not use chemicals or detergents to clean the product. If becomes very hot during charging or emits smoke/vapour; switch off at the plug socket, disconnect, do not use and contact your retailer.