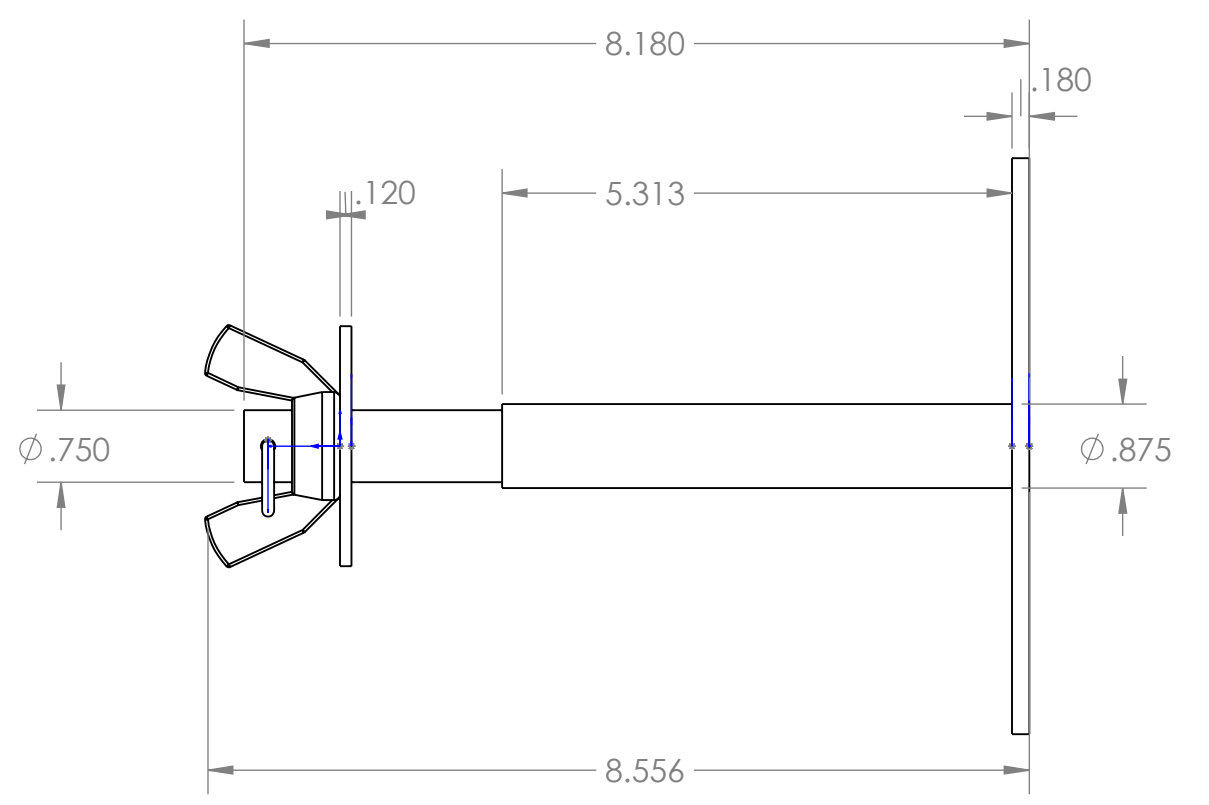
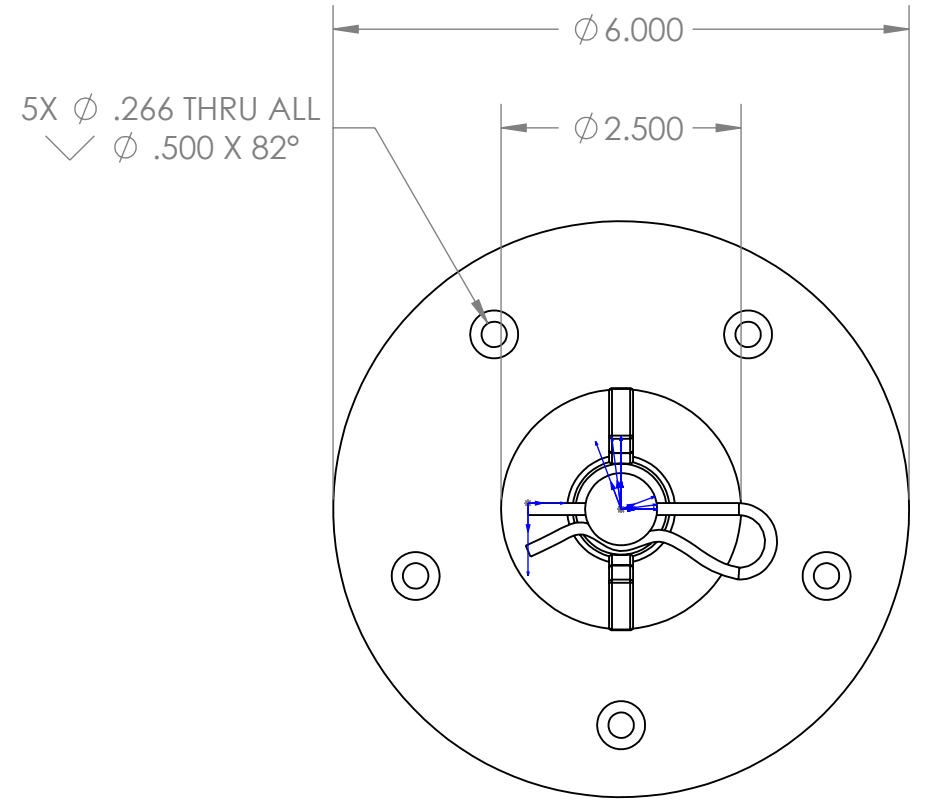
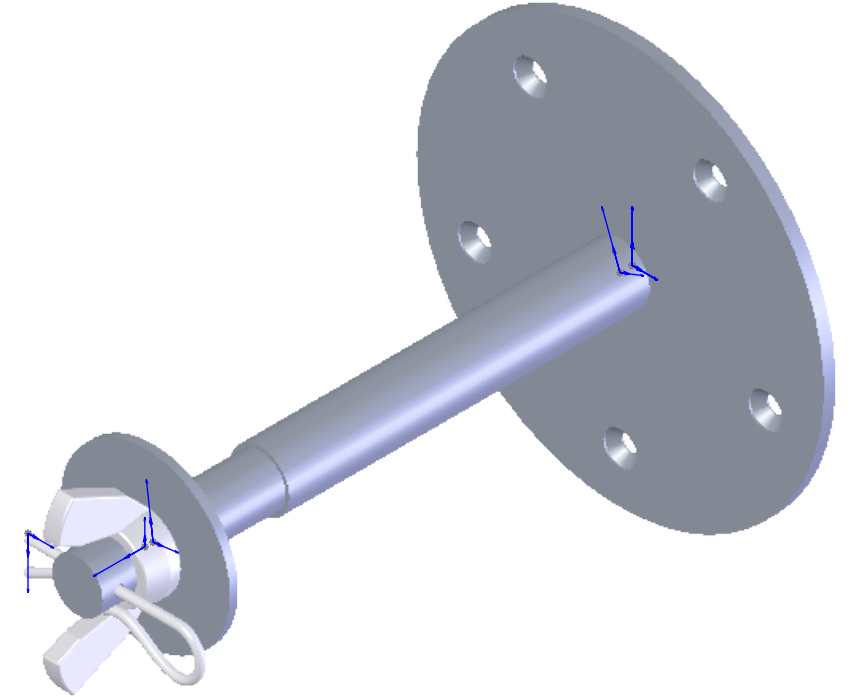



ITEM NO.	PART NUMBER	DESCRIPTION	QTY.
1	001021781	BASE, SPARE PROP HOLDER	1
2	001021780	SLEEVE, SPARE PROP HOLDER	1
3	001021783	ROD, THREAD SPARE PROP HOLDER	1
4	001016579	PIN:COTTER 7/16-3/4x1/8	1
5	001016554	NUT: WING 3/4-10	1
6	001021782	WASHER, SS SPARE PROP HOLDER	1



STATUS		<b>PROTOTYPE</b>	
 <b>PATRICK MARINE FABRICATION</b> DEBURR FINISHED PART & REMOVE ALL SHARP EDGES			
THIRD ANGLE PROJECTION	<b>TOLERANCES</b> $\frac{1}{16}'' = \pm \frac{1}{16}''$ $\frac{1}{6}'' = \pm \frac{1}{16}''$ $.XXX'' = \pm .005''$ UNLESS OTHERWISE NOTED	THIS DOCUMENT AND ANY OTHER INFORMATION ASSOCIATED WITH THIS DOCUMENT IS THE SOLE PROPERTY OF PATRICK INDUSTRIES AND SHALL NOT BE COPIED OR DISTRIBUTED WITHOUT CONSENT.	
DRAWN BY TK	REVISED BY	RELEASED BY ECN	---
REVISION COMMENTS ---			
DESCRIPTION HOLDER, SS SPARE PROP			
MATERIAL PER TABLE			
RAW MATERIAL			SCALE 1:4
FINISH POLISHED		W/C	SHEET 1 OF 1
PROJECT 01521	DRAWING NUMBER 001021779	CLASS FF	REV. A