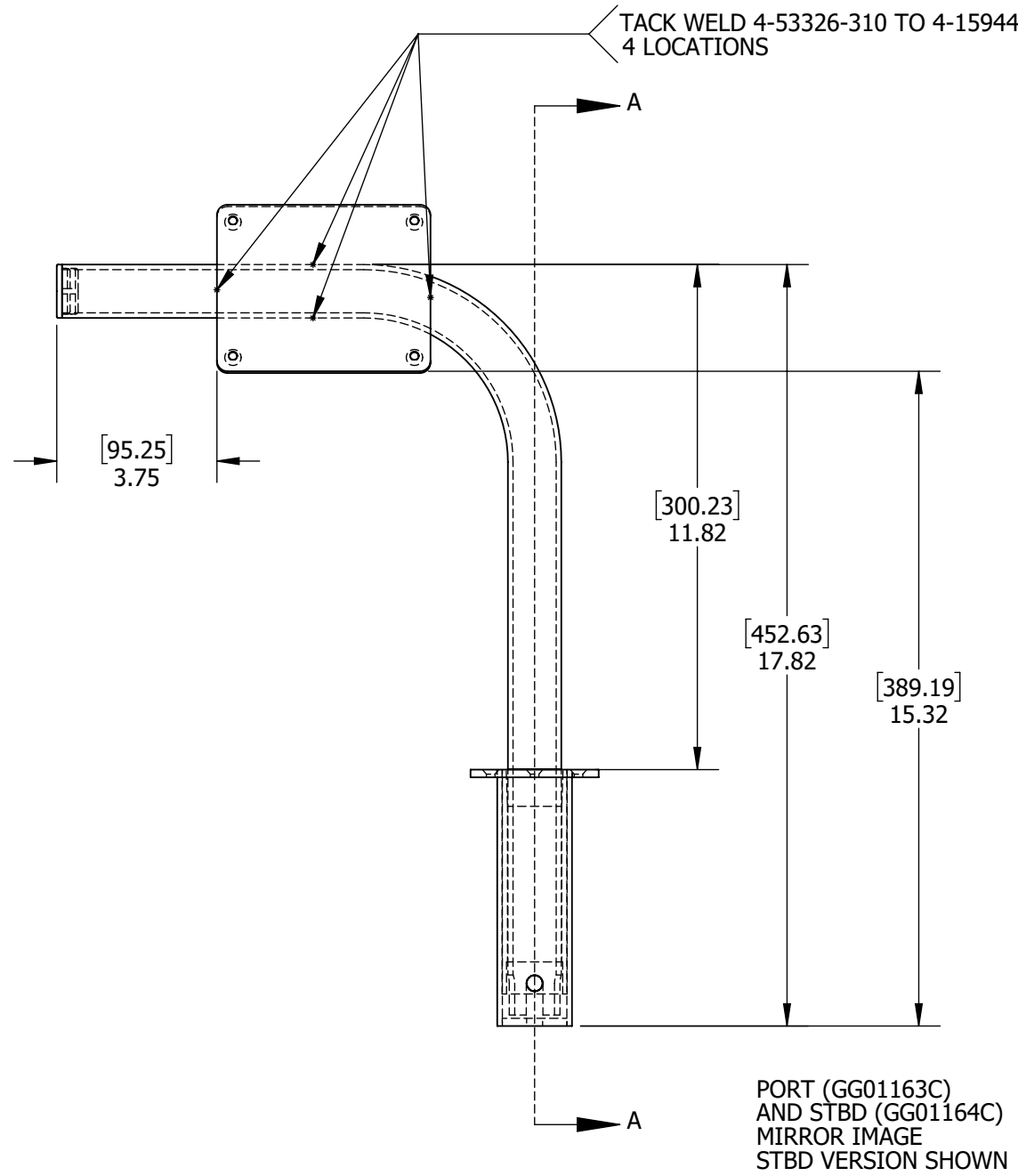
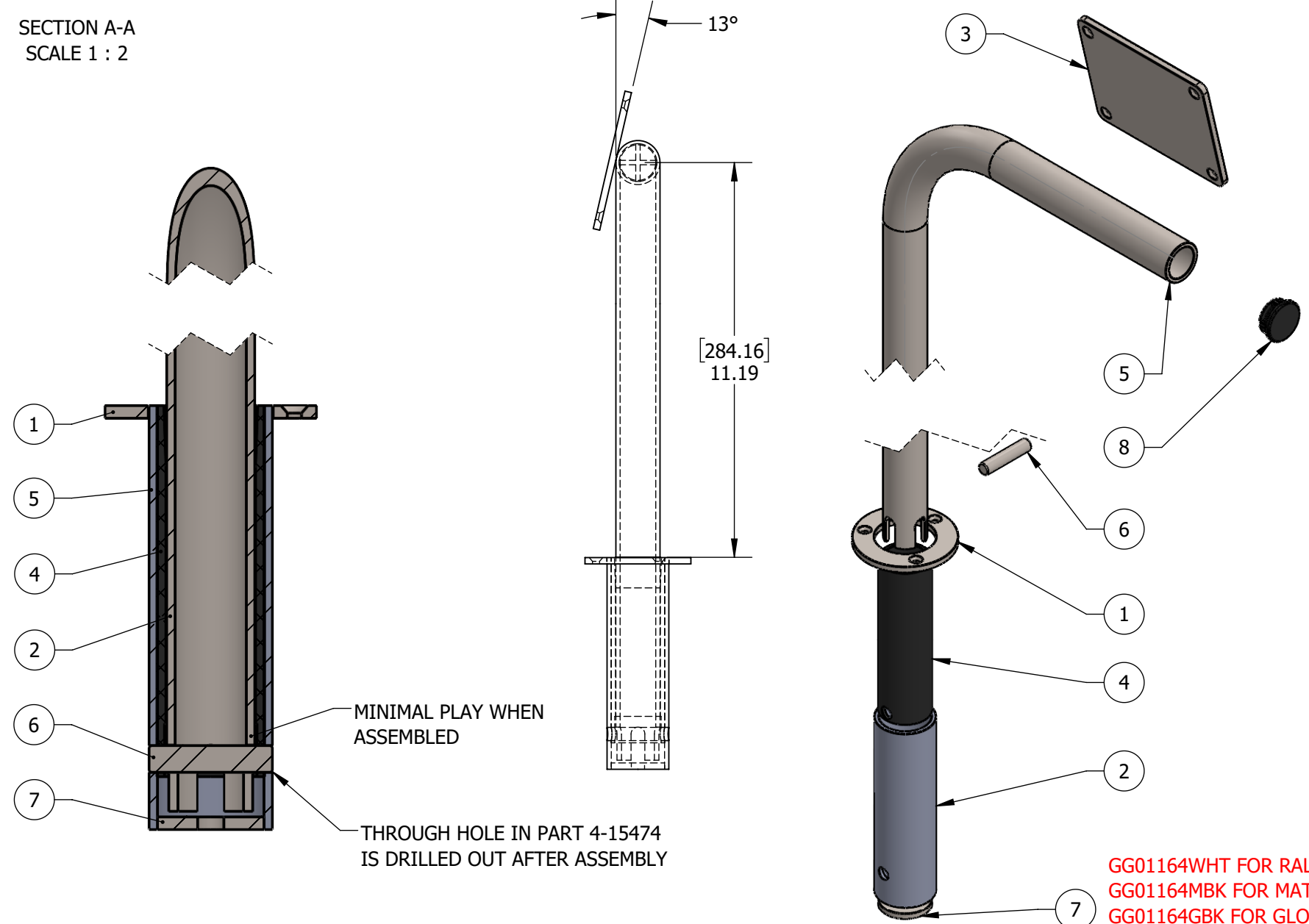


MATERIAL: SS T316  
FINISH: #8 MIRROR POLISHED

ITEM NO.	PART NUMBER	DESCRIPTION	QTY.
1	4-53326-110	RING,MAV BACKREST ARM 7G T316L	1
2	160422	TUBE,RND SS 1-3/4"X11G BP T316	1
3	4-53326-310	PLATE,MAV BACKREST ARM 7G T316L	1
4	4-15474	BUSHING,DELRIN BLK MAV BACKREST 1.523"OD X 5.25"L	1
5	4-15944	TUBE,SS BACKREST ARM MAV 1-1/4"OD X 11G X 3' T316L	1
6	105021	BAR,RND SS 3/8"DIA T316L	1
7	4-53326-210	CAP,MAV BACKREST ARM 7G T316L	1
8	4-17135	CAP,PLASTIC BLK 1.25"OD X 14-18G	1



SECTION A-A  
SCALE 1 : 2



GG01164WHT FOR RAL 9016  
GG01164MBK FOR MATTE BLACK  
GG01164GBK FOR GLOSS BLACK  
GG01164GRY FOR RAL 7004

REVISIONS			
REV.	DESCRIPTION	DATE	APPROVED
A	POWDER COAT COLORS ADDED. (IN-HOUSE REVISION)	11/18/2021	MW
B	ADDED WELD, MACHING AND ASSEMBLY NOTES	11/15/2021	CW
C	FIXED LOCATION & DIRECTION OF (4-53326-310)	12/09/2021	SJ

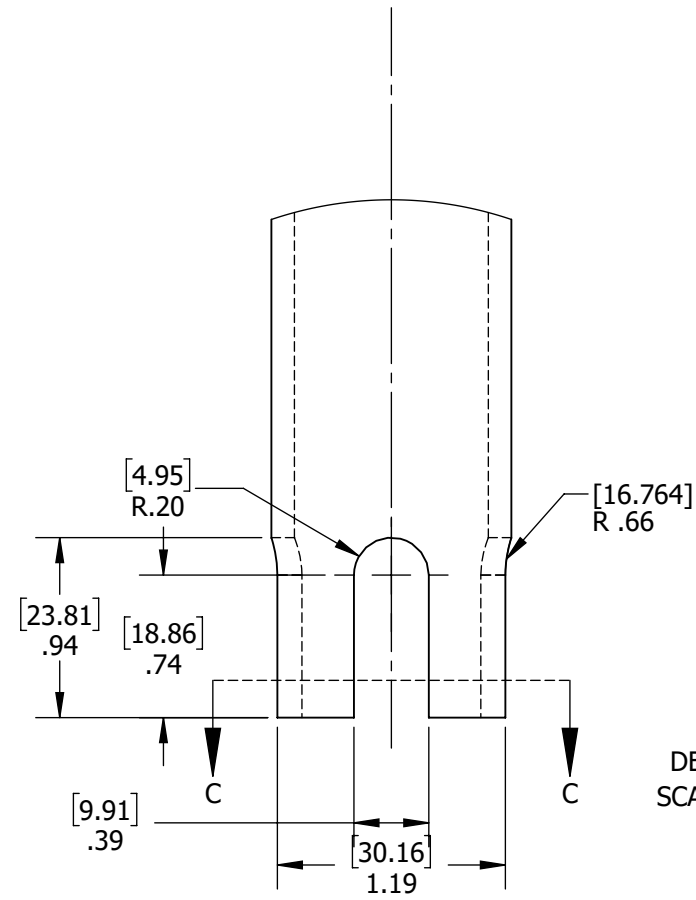
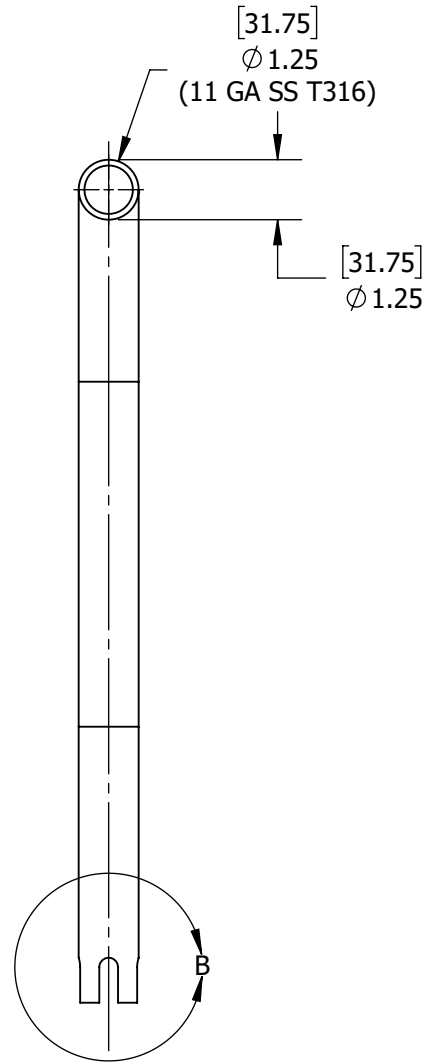
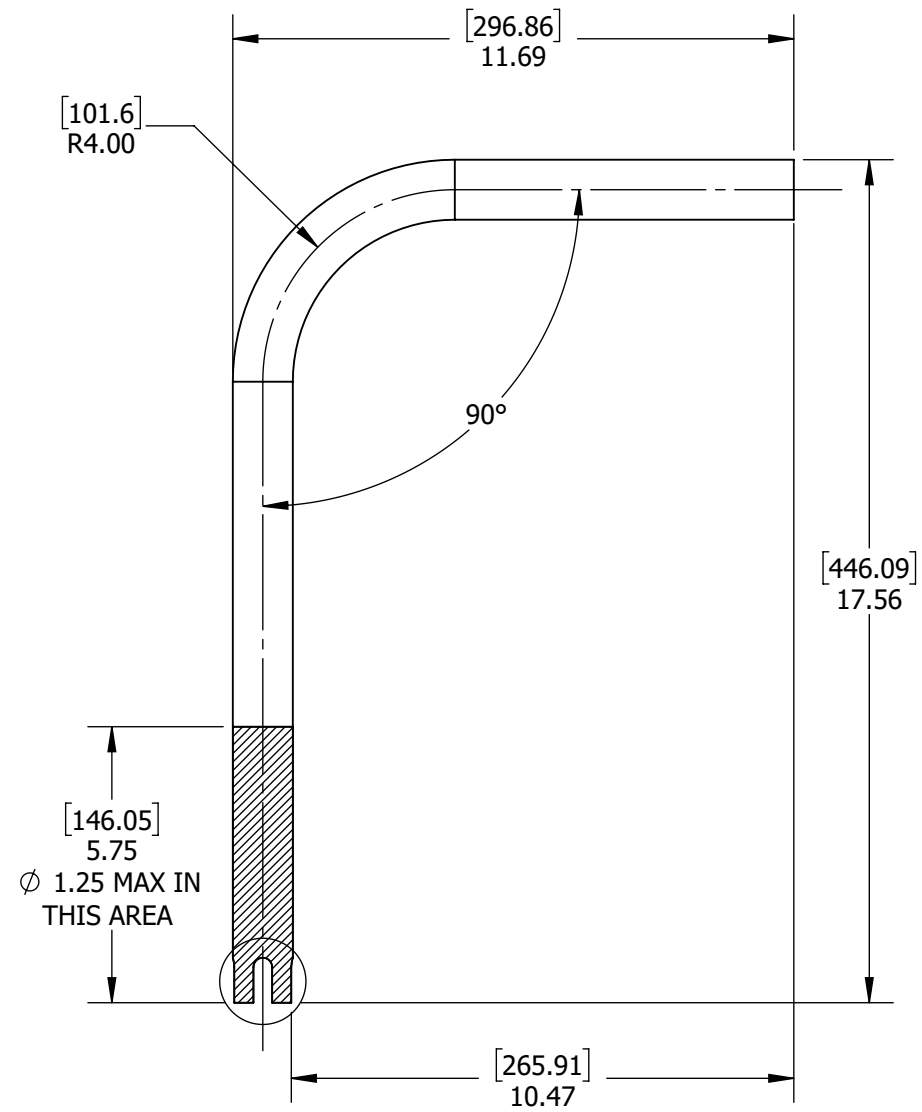
**PROPRIETARY AND CONFIDENTIAL**  
THE INFORMATION CONTAINED IN THIS DRAWING IS THE SOLE PROPERTY OF GG SCHMITT & SONS.  
ANY REPRODUCTION IN PART OR AS A WHOLE WITHOUT THE WRITTEN PERMISSION OF GG SCHMITT & SONS IS PROHIBITED.

**THIRD ANGLE PROJECTION**  
UNLESS OTHERWISE SPECIFIED: DIMENSIONS ARE IN INCHES [SECONDARY IS IN MILLIMETERS]  
TOLERANCES:  
FRACTIONAL: ± 1/16"  
ANGLE: ± 5°  
.XX ± .03", .XXX ± .010  
INTERPRET DIM AND TOL PER ASME 14.5M-1994

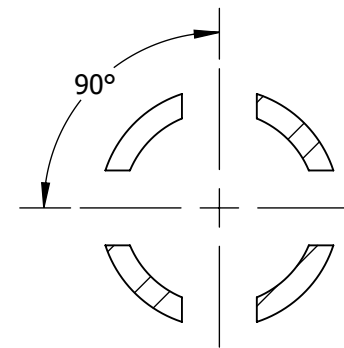
DESCRIPTION  
**ARM,SS STBD  
PATHFINDER BACKREST  
W/SOCKET 2PC**  
DRAWN CONOR W 6/30/2021  
CHECKED

**GG Schmitt & Sons**  
PART NO. **GG01164C**  
REV C  
SCALE 1:4 DO NOT SCALE DRAWING SIZE B SHEET 1 OF 4

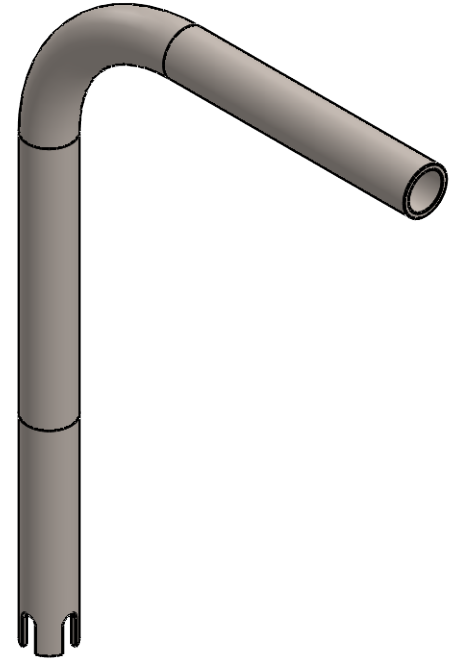
PN: 4-15944  
 MATERIAL: 1 1/4" 11 GA SS TUBE T316 (27")  
 FINISH: DEBURR, BREAK ALL EDGES AND SHARP CORNERS.  
 MIRROR POLISH TO #8.





DETAIL B  
SCALE 1 : 1



SECTION C-C  
SCALE 1 : 1



<b>PROPRIETARY AND CONFIDENTIAL</b> THE INFORMATION CONTAINED IN THIS DRAWING IS THE SOLE PROPERTY OF GG SCHMITT & SONS. ANY REPRODUCTION IN PART OR AS A WHOLE WITHOUT THE WRITTEN PERMISSION OF GG SCHMITT & SONS IS PROHIBITED.	<b>THIRD ANGLE PROJECTION</b>  UNLESS OTHERWISE SPECIFIED: DIMENSIONS ARE IN INCHES [SECONDARY IS IN MILLIMETERS] TOLERANCES: FRACTIONAL: 1/16" ANGLE: ± .5° .XX ± .03", .XXX ± .010 INTERPRET DIM AND TOL PER ASME 14.5M-1994	<b>DESCRIPTION</b> <b>ARM, SS STBD</b> <b>PATHFINDER BACKREST</b> <b>W/SOCKET 2PC</b>						
		DRAWN CONOR W 6/30/2021 CHECKED	SCALE 1:4 DO NOT SCALE DRAWING	SIZE B	SHEET 2 OF 4	PART NO. <b>GG01164C</b>	REV C	

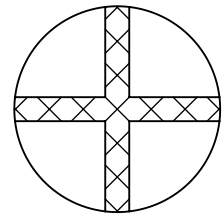
6 5 4 3 2 1

6 5 4 3 2 1

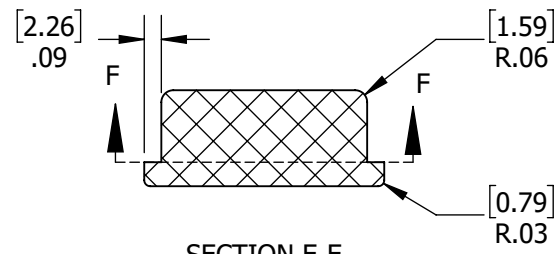
D  
C  
B  
A

D  
C  
B  
A

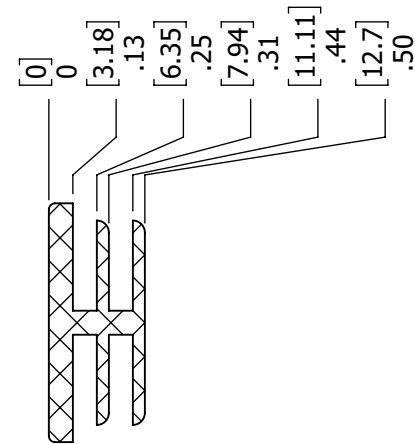
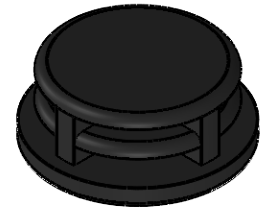
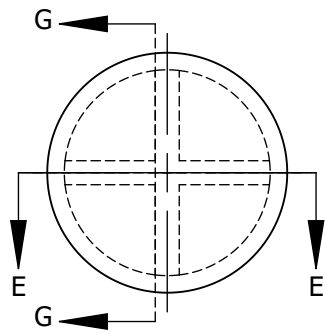
PN: 4-17135  
 VENDOR PART NUMBER: 9283K15  
 VENDOR: MCMASER-CARR SUPPLY CO.  
 MATERIAL: POLYETHYLENE PLASTIC, BLACK  
 FINISH: MILL FINISH



SECTION F-F  
 SCALE 1 : 1

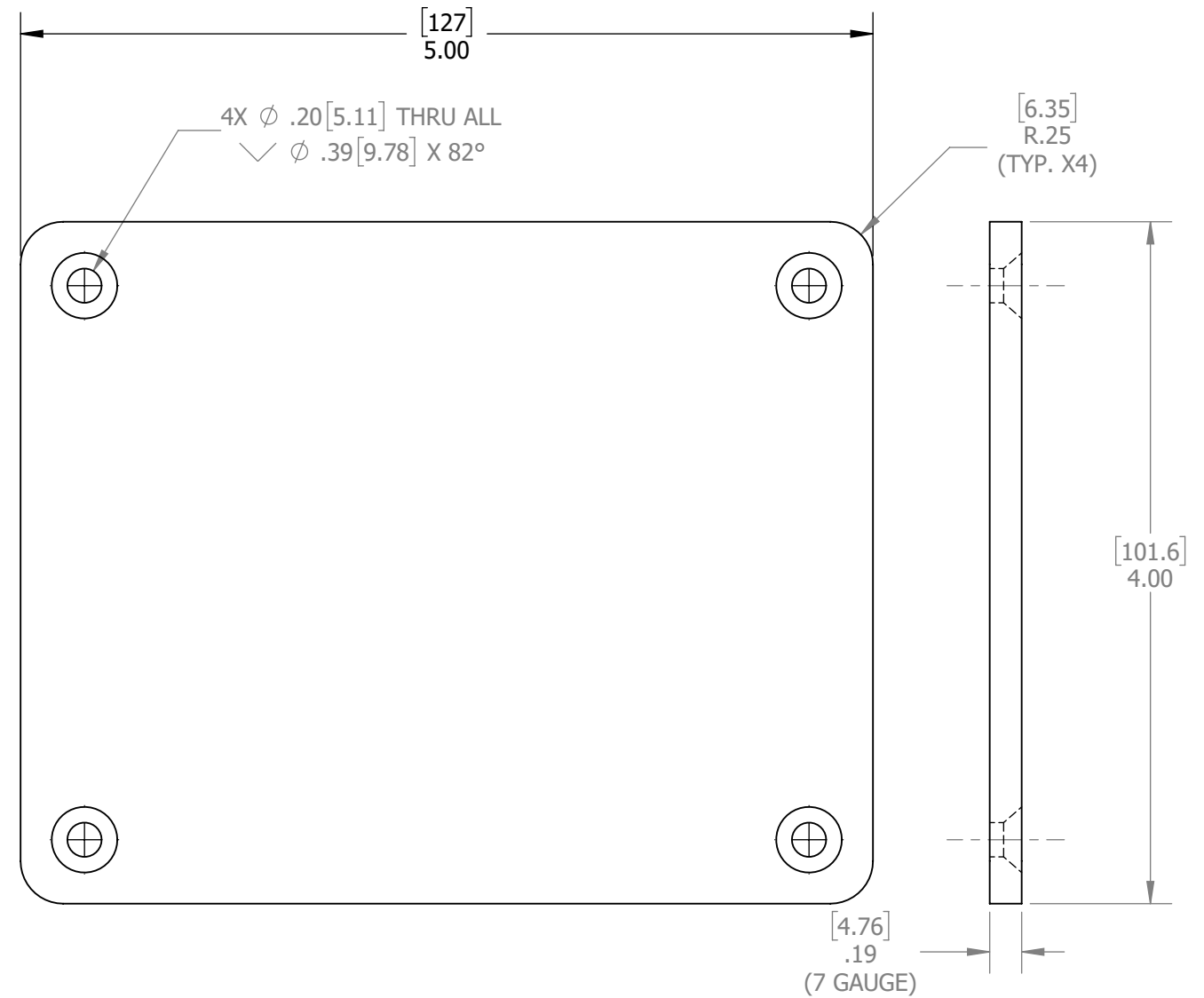


SECTION E-E  
 SCALE 1 : 1



SECTION G-G  
 SCALE 1 : 1

PN: 4-53326-310  
 MATERIAL: SHEET, SS 7GA T316L W/2B  
 FINISH: #8 MIRROR FINISH



**PROPRIETARY AND CONFIDENTIAL**

THE INFORMATION CONTAINED IN THIS DRAWING IS THE SOLE PROPERTY OF GG SCHMITT & SONS.

ANY REPRODUCTION IN PART OR AS A WHOLE WITHOUT THE WRITTEN PERMISSION OF GG SCHMITT & SONS IS PROHIBITED.

**THIRD ANGLE PROJECTION**



UNLESS OTHERWISE SPECIFIED:  
**DIMENSIONS ARE IN INCHES**  
**[SECONDARY IS IN MILLIMETERS]**  
**TOLERANCES:**  
 FRACTIONAL: 1/16"  
 ANGLE: ± .5°  
 .XX ± .03", .XXX ± .010  
 INTERPRET DIM AND TOL PER ASME 14.5M-1994

**DESCRIPTION**  
**ARM, SS STBD**  
**PATHFINDER BACKREST**  
**W/SOCKET 2PC**

DRAWN	CONOR W	6/30/2021
CHECKED		

**GG Schmitt & Sons**

PART NO.  
**GG01164C**

2821 Old Tree Dr  
 Lancaster, PA 17603  
 (717)394-4301  
 7220 15th St. E  
 Sarasota, FL 34243  
 (941)562-1927

REV  
**C**

SCALE <b>1:1</b>	DO NOT SCALE DRAWING	SIZE <b>B</b>	SHEET <b>3 OF 4</b>
---------------------	----------------------------	------------------	------------------------

6

5

4

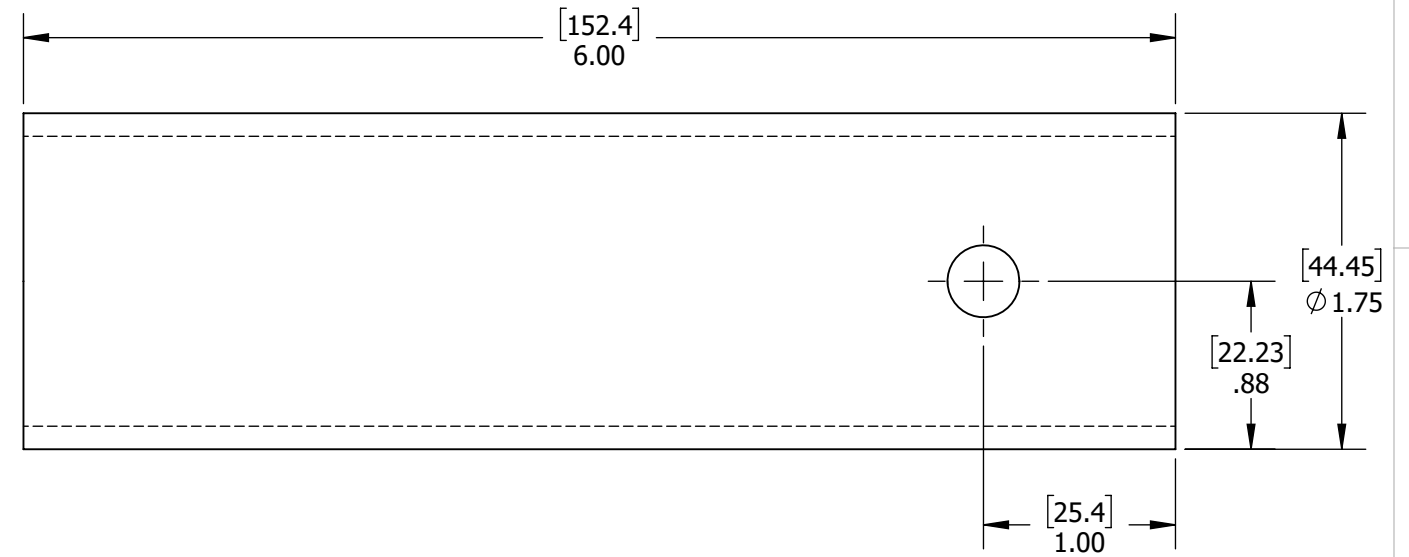
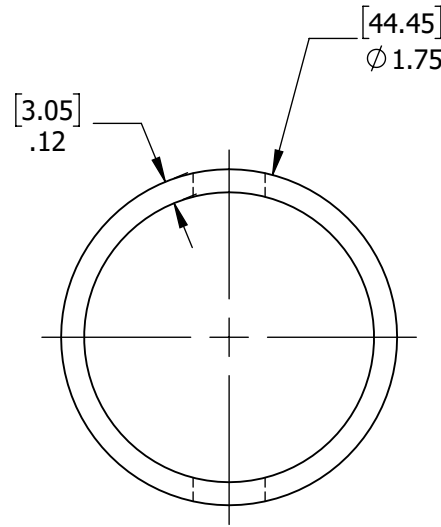
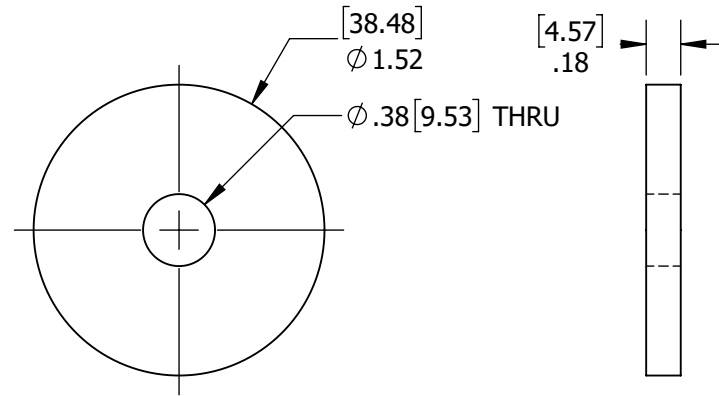
3

2

1

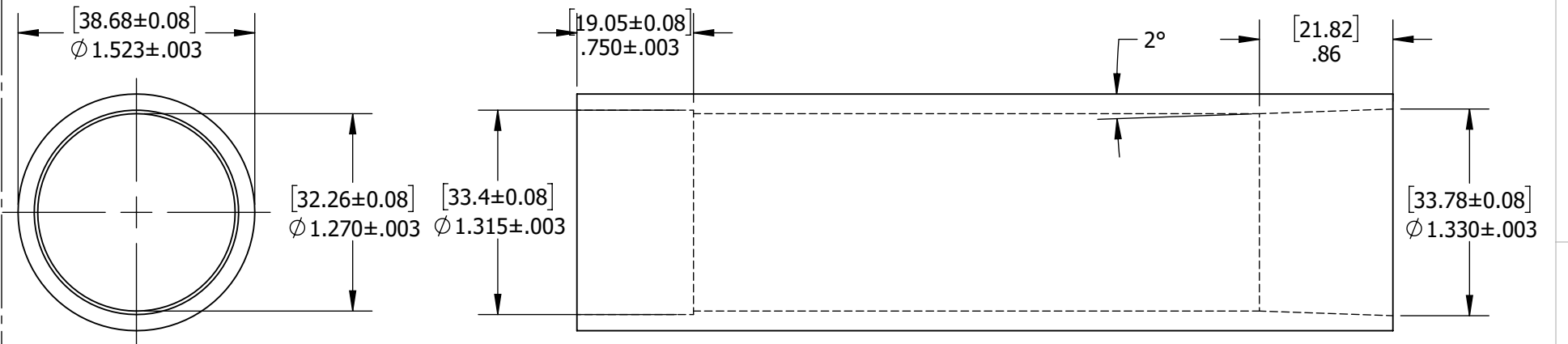
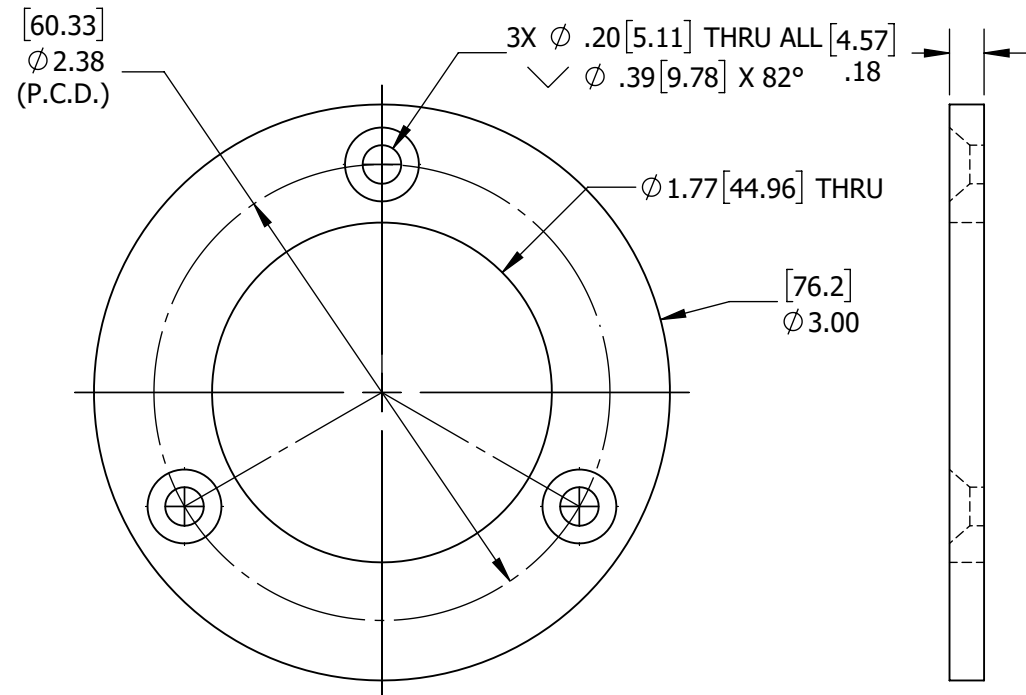
PN: 4-53326-110  
MATERIAL: SHEET, SS 7GA  
FINISH: MILL FINISH

PN: 160422 (RAW MATERIAL)  
MATERIAL: TUBE, SS 11G X 3" T316L  
FINISH: MILL FINISH



PN: 4-53326-210  
MATERIAL: SHEET, SS 7GA  
FINISH: #8 MIRROR POLISHED

PN: 4-15474  
MATERIAL: DELRIN BLK 1.523"OD X 5.25"L  
FINISH: MILL FINISH



6

5

4

3

2

1

<p><b>PROPRIETARY AND CONFIDENTIAL</b></p> <p>THE INFORMATION CONTAINED IN THIS DRAWING IS THE SOLE PROPERTY OF GG SCHMITT &amp; SONS.</p> <p>ANY REPRODUCTION IN PART OR AS A WHOLE WITHOUT THE WRITTEN PERMISSION OF GG SCHMITT &amp; SONS IS PROHIBITED.</p>	<p><b>THIRD ANGLE PROJECTION</b></p> <p>UNLESS OTHERWISE SPECIFIED: DIMENSIONS ARE IN INCHES [SECONDARY IS IN MILLIMETERS]</p> <p>TOLERANCES:</p> <p>FRACTIONAL: 1/16"</p> <p>ANGLE: ± .5°</p> <p>.XX ± .03", .XXX ± .010</p> <p>INTERPRET DIM AND TOL PER ASME 14.5M-1994</p>	<p>DESCRIPTION</p> <p><b>ARM, SS STBD PATHFINDER BACKREST W/SOCKET 2PC</b></p>			<p><b>GG Schmitt &amp; Sons</b></p> <p>2821 Old Tree Dr Lancaster, PA 17603 (717)394-4301</p> <p>7200 15th St. E Sarasota, FL 34243 (941)562-1927</p>			
		<p>DRAWN CONOR W 6/30/2021</p> <p>CHECKED</p>	<p>SCALE 1:1</p> <p>DO NOT SCALE DRAWING</p> <p>SIZE B</p>	<p>REV C</p> <p>SHEET 4 OF 4</p>				