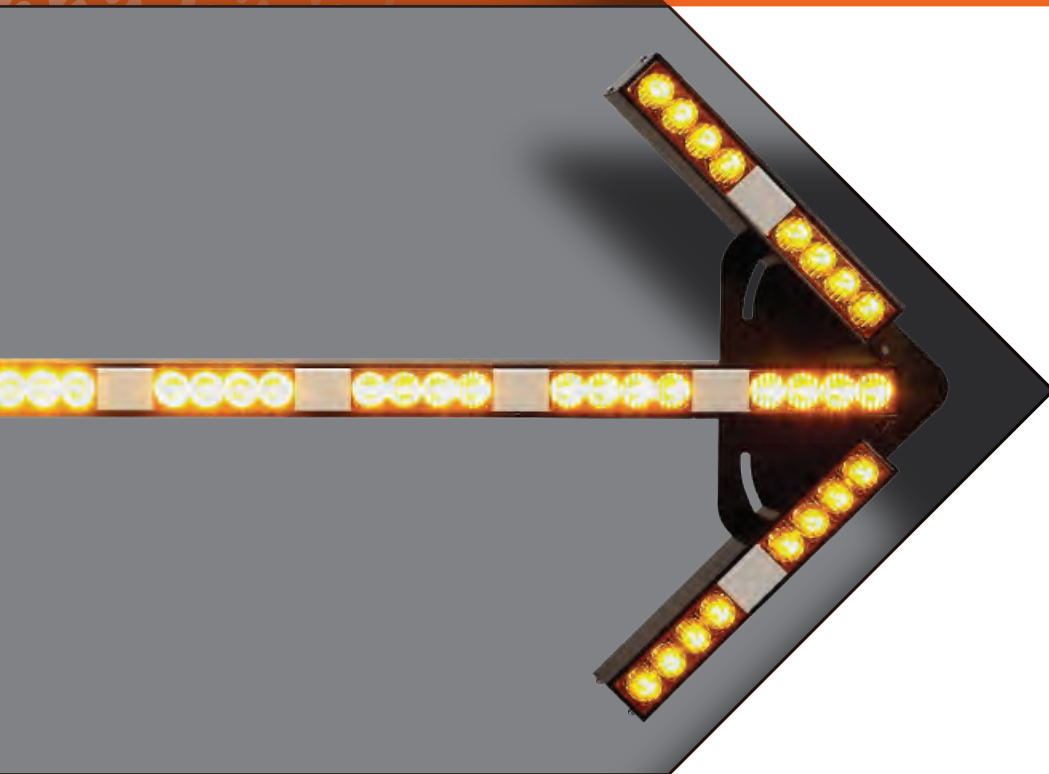


WARNING & SAFETY PRODUCTS LAMPES D'AVERTISSEMENT ET SÉCURITÉ

LED Warning Lights | Strobes | Accessories | Back-Up Alarms
Avertisseur lumineux DEL | Lampes stroboscopiques
| Accessories | Avertisseurs de recul



**Pro
Renfort**

2019



<https://prorenfort.ca>

VALUE IS WHAT WE DELIVER

At Uni-Bond, our main focus is providing real value to our customers. This focus is reflected across all areas of our company.

In Our Quality: Uni-Bond's products are designed and engineered to North American standards. They are certified to meet FMVSS108 DOT, MOT CMVSS108 and SAE standards where applicable. Most manufacturing partners have state of the art quality control equipment, are ISO certified and monitored by Uni-Bond personnel. Always working toward zero defects and exceeding your expectations requires us to take a proactive approach. We strive to prevent problems at the manufacturing stage rather than trying to correct them later.

In Our Support: Being proactive with manufacturing processes, practices and the latest technological advancements allows us to stand behind all our products with robust warranties. Our sales representatives, engineers and management are always available to respond to any questions or concerns you might have. Uni-Bond's pricing is competitive, ensuring the profitability of your business. This, combined with always delivering reliable and trustworthy products is how we have developed so many long-term relationships with our customers.

In Our Service: Uni-Bond's large inventory powers our exceptionally high fill rate. You cannot afford to wait with empty shelves. Our shipping time on orders is usually less than 48 hours. When you call or email, you will get prompt personal response. Our customer service representatives are knowledgeable, attentive and available. No answering machines or answering service.

In Our Responsibilities: We are constantly working to improve safety and provide our employees with better conditions and a more secure work place. We regularly review our product, packaging and office procedures to reduce our environmental impact.

IT ALL ADDS UP TO REAL VALUE.

Be sure to visit our website for new product launches and product information. Below are the QR Codes for quick access to our 4 categories of product:



Warning & Safety Products



Truck & Trailer Lights



Performance Lights



Electrical & Others



Warning & Safety Devices

Lampes d'avertissement et sécurité

Catalogue 2019

Table of Contents	Table des matières	Page No.
Synchronizable LED Warning Lights	Feu avertisseur DEL synchronisé	2 - 6
LED Warning Light Bars	Barre de feux d'avertisseur DEL	7 - 17
LED Warning Light Stick & Arrow Sets	Avertisseur lumineux DEL - barre et flèches	18
LED Beacon Lights	Feux de balise DEL	19 - 25
Directional LED Warning Lights	Avertisseur lumineux DEL directionnel	26 - 32
Battery Operated LED Warning Lights	Lampes de signalisation DEL alimentées par piles	33 - 35
Strobe Lights	Lampes stroboscopiques	36 - 39
Accessories	Accessoires	40 - 41
Back-Up Alarms	Avertisseurs de recul	42
Part Number Index	Index de numéros de pièces	43 - 44

Note:

Provincial, state, county or local municipalities may have by-laws that restrict certain patterns of warning lights, colour requirements, combination of colours and/or location of device installation. Before installation, the appropriate regulations for the regulatory district should be consulted to assure compliance with the local provincial, state and/or municipal regulations.

**E-72 Series
LED Beacons**



LED	Flash Patterns	Voltage	Amps	Pkg
16 x 1W	4 Patterns	12V - 24V	2.0 @ 12V	Box

- 3 Colour Settings with 4 Flash Patterns per Colour Setting
SAE J845 Class 2 on 2 flashes
- Lamp Dimensions: 6-3/4" H x 6-1/2" Base Dia.
- ABS Base & Polycarbonate Lens

EMC IPX5

Mount Type: **Surface Mount or Pole Mount (1" NPT) with Lead Wires.**
3 Mounting Holes @ 6" diameter.



Part No. **E-728AB**
LED Colour **Amber/Blue**

Synchronizable with
E-7211AB & E-725AB

3-IN-1 (Amber only; Blue only; Amber/Blue alternating)



Part No. **E-728AW**
LED Colour **Amber/White**

Synchronizable with
E-7211AW & E-725AW

3-IN-1 (Amber only; White only; Amber/White alternating)

Accessories

- F-S9805 Fuse/Switch Kit for E-728AB & E-728AW (see Page 41)
- E-F680 Plate & Bracket Set for Pole Mount or Mirror Arm Mount (see Page 40)
- E-FM600 Magnet Mount Kit with Coiled Wire & Cigarette Power Adaptor (see Page 40)
- E-F560K Vacuum Suction Mount Kit (see Page 40)

**E-72 Series
LED Warning Light Bars**



LED	Flash Patterns	Voltage	Amps	Pkg
72 x 1W	4 Patterns	12V - 24V	5.4 @ 12V	Box

- 3 Colour Settings with 4 Flash Patterns per Colour Setting
SAE J845 Class 2 on 2 flashes
- Lamp Dimensions: 11" L x 6-3/4" W x 2-1/2" H
- ABS Housing & Polycarbonate Lens

EMC IPX5

Mount Type: **Surface Mount with Lead Wires**



Part No. **E-7211AB**
LED Colour **Amber/Blue**

Synchronizable with
E-728AB & E-725AB

3-IN-1 (Amber only; Blue only; Amber/Blue alternating)



Part No. **E-7211AW**
LED Colour **Amber/White**

Synchronizable with
E-728AW & E-725AW

3-IN-1 (Amber only; White only; Amber/White alternating)

Accessories

- F-S9810 Fuse/Switch Kit for E-7211AB & E-7211AW (see Page 41)

**3-IN-1
E-72 Series**

The 3-IN-1 Series are designed with 3 colour settings - [2 single colour modes and 1 dual colour alternating mode]. These LED Beacon lights are synchronizable with their respective LED Warning Lights Bars and/or directional LED Warning Lights. No controller is required. Synchronization and pattern selection are done through simple wiring combinations. Up to 6 units of E-72 Series can be synchronized.

Meets Ontario Snowplow Visibility Requirements

Directional

LED	Flash Patterns	Voltage	Amps	Pkg
18 x 1W	4 Patterns	12V - 24V	0.5 @ 12V	Retail Bag

- 3 Colour Settings with 4 Flash Patterns per Colour Setting
- **SAE J845 Class 1** on 2 flashes
- Lamp Dimensions: 6" L x 1-3/8" W x 1-1/4" H
- Aluminum Base, ABS Bracket & Polycarbonate Lens

EMC IP65

Mount Type: Surface Mount with Lead Wires. 2 Holes @ 5-1/2" centres.



Part No. **E-725AB**
LED Colour **Amber/Blue**

Synchronizable with
E-728AB & E-7211AB



Part No. **E-725AW**
LED Colour **Amber/White**

Synchronizable with
E-728AW & E-7211AW



Part No. **E-725BR**
LED Colour **Blue/Red**

SAE
Class 1

Synchronizable

Accessories

F-S9805 Fuse/Switch Kit for E-728AB & E-728AW (see Page 41)

Suggested Kits

Amber/Blue Kit

Part No. **E-72K45AB**

E-725AB (x4)	-	See above
SWP4300	-	Switch Panel
ST100 (x3)	-	ON-OFF Toggle Switch
ST108 (x1)	-	OFF-MomentaryON Toggle Switch
ATM05 (x3)	-	5 Amps Mini Fuse
ATMF14C (x3)	-	In-Line Fuse Holder

Amber/White Kit

Part No. **E-72K45AW**

E-725AW (x4)	-	See above
SWP4300	-	Switch Panel
ST100 (x3)	-	ON-OFF Toggle Switch
ST108 (x1)	-	OFF-MomentaryON Toggle Switch
ATM05 (x3)	-	5 Amps Mini Fuse
ATMF14C (x3)	-	In-Line Fuse Holder

Blue/Red Kit

Part No. **E-72K45BR**

E-725BR (x4)	-	See above
SWP4300	-	Switch Panel
ST100 (x3)	-	ON-OFF Toggle Switch
ST108 (x1)	-	OFF-MomentaryON Toggle Switch
ATM05 (x3)	-	5 Amps Mini Fuse
ATMF14C (x3)	-	In-Line Fuse Holder



**E-73 Series
LED Beacons**



LED	Flash Patterns	Voltage	Amps	Pkg
24 x 3W	17 Patterns	12V - 24V	2.0 @ 12V	Box

- Flash Patterns: [7 Dual Colour Alternating & 5 each Single Colour]
- Lamp Dimensions: 6-1/2" L x 6-1/2" Base Dia.
- Aluminum Base & Polycarbonate Lens

EMC IP65

Mount Type: **Surface Mount or Pole Mount (1" NPT) with Lead Wires.**
3 Mounting Holes @ 6" diameter.



Part No. **E-736AB**
LED Colour **Amber/Blue**

Synchronizable with
E-7315AB

3-IN-1 (Amber only; Blue only; Amber/Blue alternating)

SAE J845 Class 1 on 4 Flashes



Part No. **E-736AW**
LED Colour **Amber/White**

Synchronizable with
E-7315AW

3-IN-1 (Amber only; White only; Amber/White alternating)

SAE J845 Class 1 on 5 Flashes

Accessories

- F-S955 Fuse/Switch Kit for E-736AB & E-736AW (see Page 41)
- E-F680 Plate & Bracket Set for Pole Mount or Mirror Arm Mount (see Page 40)
- E-FM600 Magnet Mount Kit with Coiled Wire & Cigarette Power Adaptor (see Page 40)
- E-F560K Vacuum Suction Mount Kit (see Page 40)

**E-73 Series
LED Warning Light Bars**

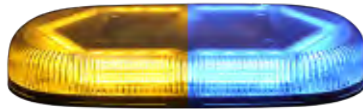


LED	Flash Patterns	Voltage	Amps	Pkg
64 x 1W	17 Patterns	12V - 24V	3.5 @ 12V	Box

- Flash Patterns: [7 Dual Colour Alternating & 5 each Single Colour]
- Lamp Dimensions: 15" L x 9-1/2" W x 2" H
- ABS Housing & Polycarbonate Lens

EMC IP65

Mount Type: **Surface Mount with Lead Wires**

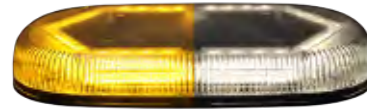


Part No. **E-7315AB**
LED Colour **Amber/Blue**

Synchronizable with
E-736AB

3-IN-1 (Amber only; Blue only; Amber/Blue alternating)

SAE J845 Class 1 on 4 Flashes



Part No. **E-7315AW**
LED Colour **Amber/White**

Synchronizable with
E-736AW

3-IN-1 (Amber only; White only; Amber/White alternating)

SAE J845 Class 1 on 5 Flashes

Accessories

- F-S975 Fuse/Switch Kit for E-7315AB & E-7315AW (see Page 41 for details)

3-IN-1

E-73 Series

The 3-IN-1 Series are designed with 3 colour settings - [2 single colour modes and 1 dual colour alternating mode]. These LED Beacon lights are synchronizable with their respective LED Warning Lights Bars. No controller is required. Synchronization and pattern selection are done through simple wiring combinations. Up to 10 units of E-73 Series can be synchronized.

Meets Ontario Snowplow Visibility Requirements

Suggested Kits

Amber/Blue Kit

Part No. **E-72K85AB**

- E-728AB - See Pg. 2
- E-725AB (x2) - See Pg. 3
- SWP4300 - Switch Panel
- ST100 (x3) - ON-OFF Toggle Switch
- ST108 (x1) - OFF-MomentaryON Toggle Switch
- ATM05 (x3) - 5 Amps Mini Fuse
- ATMF14C (x3) - In-Line Fuse Holder

Amber/White Kit

Part No. **E-72K85AW**

- E-728AW - See Pg. 2
- E-725AW (x2) - See Pg. 3
- SWP4300 - Switch Panel
- ST100 (x3) - ON-OFF Toggle Switch
- ST108 (x1) - OFF-MomentaryON Toggle Switch
- ATM05 (x3) - 5 Amps Mini Fuse
- ATMF14C (x3) - In-Line Fuse Holder



Amber/Blue Kit

Part No. **E-72K38AB**

- E-7211AB - See Pg. 2
- E-728AB (x2) - See Pg. 2
- SWP4300 - Switch Panel
- ST100 (x3) - ON-OFF Toggle Switch
- ST108 (x1) - OFF-MomentaryON Toggle Switch
- ATM10 - 10 Amps Mini Fuse
- ATM05 (x2) - 5 Amps Mini Fuse
- ATMF14C (x3) - In-Line Fuse Holder

Amber/White Kit

Part No. **E-72K38AW**

- E-7211AW - See Pg. 2
- E-728AW (x2) - See Pg. 2
- SWP4300 - Switch Panel
- ST100 (x3) - ON-OFF Toggle Switch
- ST108 (x1) - OFF-MomentaryON Toggle Switch
- ATM10 - 10 Amps Mini Fuse
- ATM05 (x2) - 5 Amps Mini Fuse
- ATMF14C (x3) - In-Line Fuse Holder



Suggested Kits

Amber/Blue Kit

Part No. **E-72K35AB**

- E-7211AB - See Pg. 2
- E-725AB (x2) - See Pg. 3
- SWP4300 - Switch Panel
- ST100 (x3) - ON-OFF Toggle Switch
- ST108 (x1) - OFF-MomentaryON Toggle Switch
- ATM10 (x1) - 10 Amps Mini Fuse
- ATM05 (x2) - 5 Amps Mini Fuse
- ATMF14C (x3) - In-Line Fuse Holder

Amber/White Kit

Part No. **E-72K35AW**

- E-7211AW - See Pg. 2
- E-725AW (x2) - See Pg. 3
- SWP4300 - Switch Panel
- ST100 (x3) - ON-OFF Toggle Switch
- ST108 (x1) - OFF-MomentaryON Toggle Switch
- ATM10 (x1) - 10 Amps Mini Fuse
- ATM05 (x2) - 5 Amps Mini Fuse
- ATMF14C (x3) - In-Line Fuse Holder



Amber/Blue Kit

Part No. **E-73K36AB**

- E-7315AB - See Pg. 4
- E-736AB (x2) - See Pg. 4
- ST100 - ON-OFF Toggle Switch
- ST108 - OFF-MomentaryON Toggle Switch
- ATM05 (x2) - 5 Amps Mini Fuse
- ATM075 (x1) - 7.5 Amps Mini Fuse
- ATMF14C (x3) - In-Line Fuse Holder

Amber/White Kit

Part No. **E-73K36AW**

- E-7315AW - See Pg. 4
- E-736AW (x2) - See Pg. 4
- ST100 - ON-OFF Toggle Switch
- ST108 - OFF-MomentaryON Toggle Switch
- ATM05 (x2) - 5 Amps Mini Fuse
- ATM075 (x1) - 7.5 Amps Mini Fuse
- ATMF14C (x3) - In-Line Fuse Holder



Compact but powerful 360° LED Warning Light Bars
Small enough to fit in a glove compartment

**9 3/4" Low Profile
Multiple Pattern**

LED Colour	LED	Flash Patterns	Voltage	Amps	Pkg
Amber	30 x 1W	23 Patterns	12V - 24V	3.8 @ 12V	Box

- **SAE J845 Class 1** on 3 flashes
- **SAE J845 Class 2** on 3 flashes
- Lamp Dimensions: 9-3/4" L x 6-3/4" W x 1-1/2" H
- Polycarbonate Base & Lens

EMC IPX5



Part No. **E-2110AC**
Permanent Mount with Lead Wires



Part No. **E-2110ACB**
Permanent Mount with Single Bolt
Bracket & Lead Wires



Part No. **E-2110ACM**
Magnetic Mount, Fused Cigarette
Power Adaptor with ON/OFF Switch,
Flash Selection Switch & 9.8 ft Wire



E-2110 Series



E-2110ACM Magnetic Mount

Accessories

- F-S956 Fuse/Switch Kit for E-2110AC & E-2110ACB (see Page 41)
- E-F212 Replacement Brackets (sold in pairs) for E-2110AC
- E-F211 Replacement Brackets for E-2110ACB
- E-F212M Replacement Magnet Set for E-2110ACM

LED Colour	LED	Flash Patterns	Voltage	Amps	Pkg
Amber	30 x 1W	23 Patterns	12V - 24V	3.0 @ 12V	Box

- **SAE J845 Class 1** on 1 flash
- Lamp Dimensions: 9-3/4" L x 6-3/4" W x 1-1/2" H
- Polycarbonate Base & Lens

EMC IP65



Part No. **E-2210A**
Permanent Mount with Lead Wires



Part No. **E-2210AC**
Permanent Mount with Lead Wires



Part No. **E-2210AM**
Magnetic Mount with Suction Cups,
Fused Cigarette Power Adaptor with
ON/OFF Switch, Flash Selection
Switch & 12 ft Wire



Part No. **E-2210ACM**
Magnetic Mount with Suction Cups,
Fused Cigarette Power Adaptor with
ON/OFF Switch, Flash Selection
Switch & 12 ft Wire



E-2210ACM Magnetic Mount
with Suction Cups

Accessories

- F-S956 Fuse/Switch Kit for E-2210A & E-2210AC (see Page 41)
- E-F222 Replacement Brackets (sold in pairs) for E-2210A & E-2210AC
- E-F222M Replacement Magnet Set for E-2210AM & E-2210ACM

**11" Dual Colour
Multiple Pattern**

Meets Ontario Snowplow Visibility Requirements

E-72 Series



LED	Flash Patterns	Voltage	Amps	Pkg
72 x 1W	4 Patterns	12V - 24V	5.4 @ 12V	Box

- 3 Colour Settings with 4 Flash Patterns per Colour Setting
- **SAE J845 Class 2** on 2 flashes
- Lamp Dimensions: 11" L x 6-3/4" W x 2-1/2" H
- ABS Housing & Polycarbonate Lens

EMC IPX5

Mount Type: Surface Mount with Lead Wires



Part No. **E-7211AB**
LED Colour **Amber/Blue**

Synchronizable with
E-728AB & E-725AB

3-IN-1 (Amber only; Blue only; Amber/Blue alternating)



Part No. **E-7211AW**
LED Colour **Amber/White**

Synchronizable with
E-728AW & E-725AW

3-IN-1 (Amber only; White only; Amber/White alternating)

Accessories

F-S9810 Fuse/Switch Kit for E-7211AB & E-7211AW (see Page 41)

14" Multiple Pattern

E-2140 Series



LED Colour	LED	Flash Patterns	Voltage	Amps	Pkg
Amber	24 x 1W	23 Patterns	12V - 24V	3.8 @ 12V	Box

- **SAE J845 Class 1** on 4 flashes
- **SAE J845 Class 2** on 1 flash
- Lamp Dimensions: 14" L x 8" W x 2" H
- Polycarbonate Base & Lens

EMC IPX4K



Part No. **E-2140AC**
Permanent Mount with Lead Wires



Part No. **E-2140ACM**
Magnetic Mount with Suction Cups,
Fused Cigarette Power Adaptor with
ON/OFF Switch, Flash Selection
Switch & 9.8 ft Wire

Accessories

F-S956 Fuse/Switch Kit for E-2140AC (see Page 41)



E-2140ACM Magnetic Mount
with Suction Cups

Meets Ontario Snowplow Visibility Requirements

15" Dual Colour
Multiple Pattern

LED	Flash Patterns	Voltage	Amps	Pkg
64 x 1W	17 Patterns	12V - 24V	3.5 @ 12V	Box

- Flash Patterns: [7 Dual Colour Alternating & 5 each Single Colour]
- Lamp Dimensions: 15" L x 9-1/2" W x 2" H
- ABS Housing & Polycarbonate Lens

EMC IP65

Mount Type: Surface Mount with Lead Wires

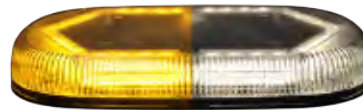


Part No. **E-7315AB**
LED Colour **Amber/Blue**

Synchronizable with
E-736AB

3-IN-1 (Amber only; Blue only; Amber/Blue alternating)

SAE J845 Class 1 on 4 Flashes



Part No. **E-7315AW**
LED Colour **Amber/White**

Synchronizable with
E-736AW

3-IN-1 (Amber only; White only; Amber/White alternating)

SAE J845 Class 1 on 5 Flashes



SAE
Class 1

Synchronizable

Accessories

F-S975 Fuse/Switch Kit for E-7315AB (see Page 41)

15" Quad Flash
Alternating Left & Right

LED Colour	LED	Flash Patterns	Voltage	Amps	Pkg
Amber	32 x 1W	Quad Alternating Left & Right	12V - 24V	0.8 @ 12V	Box

- **SAE J595 Class 1** (Front & Rear Directional)
- Lamp Dimensions: 15" L x 3-11/16" W x 1-7/16" H
- Aluminum Light Bar with Polycarbonate Lens

EMC IP65

Mount Type: 2 Magnets with Suction Cups, Fused Cigarette Power Adaptor with ON/OFF Switch & 12.5 ft Wire



E-2150AM Magnetic Mount
with Suction Cups



Waterproof Connector between
harness and light bar allows for
easier harness routing



SAE
Class 1

16" Low Profile LED
Multiple Pattern

E-2115 Series



LED Colour	LED	Flash Patterns	Voltage	Amps	Pkg
Amber	42 x 1W	24 Patterns	12V - 24V	6.2 @ 12V	Box

- **SAE J845 Class 1** on 4 Flashes
- **SAE J845 Class 2** on 1 Flash
- Lamp Dimensions: 16" L x 7" W x 1-1/2" H
- Polycarbonate Base & Lens

EMC IP67 RoHS



Part No. **E-2115AC**
Permanent Mount with Lead Wires



Part No. **E-2115ACM**
Magnetic Mount, Fused Cigarette Power Adaptor with ON/OFF Switch, Flash Selection Switch & 9.8 ft Wire



E-2115ACM Magnetic Mount with Suction Cups

Accessories

- F-S976 Fuse/Switch Kit for E-2115AC (see Page 41)
- E-F212 Replacement Brackets (sold in pairs) for E-2115AC
- E-F212M Replacement Magnet Set for E-2115ACM

E-2215 Series



LED Colour	LED	Flash Patterns	Voltage	Amps	Pkg
Amber	30 x 1W	23 Patterns	12V - 24V	3.0 @ 12V	Box

- **SAE J845 Class 1** on 1 Flash
- Lamp Dimensions: 16" L x 8" W x 1-1/2" H
- Polycarbonate Base & Lens

EMC IP65



Part No. **E-2215A**
Permanent Mount with Lead Wires



Part No. **E-2215AC**
Permanent Mount with Lead Wires



E-2215 Magnetic Mount with Suction Cups



Part No. **E-2215AM**
Magnetic Mount, Fused Cigarette Power Adaptor with ON/OFF Switch, Flash Selection Switch & 12 ft Wire



Part No. **E-2215ACM**
Magnetic Mount, Fused Cigarette Power Adaptor with ON/OFF Switch, Flash Selection Switch & 12 ft Wire

Accessories

- F-S956 Fuse/Switch Kit for E-2215A & E-2215AC (see Page 41)
- E-F223 Replacement Brackets (sold in pairs) for E-2215A & E-2215AC
- E-F222M Replacement Magnet Set for E-2215AM & E-2215ACM

16.5" Quad Flash
Alternating Left & Right

LED Colour	LED	Flash Patterns	Voltage	Amps	Pkg
Amber/Amber	32 x 1W	Quad Alternating Left & Right	12V - 30V	1.2 @ 12V	Box

- SAE J595 Class 1 (Front & Rear Directional)
- Lamp Dimensions: 16-1/2" L x 8-1/16" W x 4-3/16" H
- ABS Base with Polycarbonate Dome & Lens

EMC IP65



Part No. **E-280AA**
Permanent Mount with Lead Wires



Part No. **E-280AC**
Permanent Mount with Lead Wires



Part No. **E-280AAM**
Magnetic Mount with Suction Cups, Fused Cigarette Power Adaptor with ON/OFF Switch & 11 ft Wire



Part No. **E-280ACM**
Magnetic Mount with Suction Cups, Fused Cigarette Power Adaptor with ON/OFF Switch & 11 ft Wire



E-280 Series
Amber/Amber

SAE
Class 1



E-280 Magnetic Mount with Suction Cups

Accessories

F-S950 Fuse/Switch Kit for E-280AA & E-280AC (see Page 41)

LED Colour	LED	Flash Patterns	Voltage	Amps	Pkg
Amber/White	32 x 1W	Quad Alternating Left & Right	12V - 30V	1.2 @ 12V	Box

- Lamp Dimensions: 16-1/2" L x 8-1/16" W x 4-3/16" H
- ABS Base with Polycarbonate Dome & Lens

EMC IP65



Part No. **E-280AW**
Mount Type
Permanent Mount with Lead Wires



Part No. **E-280AWM**
Mount Type
Magnetic Mount with Suction Cups, Fused Cigarette Power Adaptor with ON/OFF Switch & 11 ft Wire



E-280 Series
Amber/White



E-280 Magnetic Mount

Accessories

F-S950 Fuse/Switch Kit for E-280AW (see Page 41)

16.5" Multiple Pattern

E-2161 Series
Amber



SAE
Class 1

LED Colour	LED	Flash Patterns	Voltage	Amps	Pkg
Amber	18 x 1W	19 Patterns	12V	3.1 @ 12V	Box

- SAE J845 Class 1 on 3 Flashes
- Lamp Dimensions: 16-5/8" L x 6-3/8" W x 3" H
- Polycarbonate Base & Lens

IP65 RoHS



Part No. **E-2161A**
Mount Type
Permanent Mount with Lead Wires



Part No. **E-2161AC**
Mount Type
Permanent Mount with Lead Wires



Part No. **E-2161AM**
Mount Type
Magnetic Mount with Suction Cups,
Fused Cigarette Power Adaptor with
ON/OFF Switch, Flash Selection
Switch & 10 ft Wire



Part No. **E-2161ACM**
Mount Type
Magnetic Mount with Suction Cups,
Fused Cigarette Power Adaptor with
ON/OFF Switch, Flash Selection
Switch & 10 ft Wire

Accessories

- F-S956 Fuse/Switch Kit for E-2161A & E-2161AC (see Page 41)
E-F216 Replacement Brackets (sold in pairs) for E-2161A & E-2161AC

E-2161 Series
Amber/Blue



LED Colour	LED	Flash Patterns	Voltage	Amps	Pkg
Amber/Blue	18 x 1W	19 Patterns	12V	3.1 @ 12V	Box

- Lamp Dimensions: 16-5/8" L x 6-3/8" W x 3" H
- Polycarbonate Base & Lens

IP65 RoHS



Part No. **E-2161AB**
Mount Type
Permanent Mount with Lead Wires



Part No. **E-2161ABM**
Mount Type
Magnetic Mount with Suction Cups,
Fused Cigarette Power Adaptor with
ON/OFF Switch, Flash Selection
Switch & 10 ft Wire

Accessories

- F-S956 Fuse/Switch Kit for E-2161AB (see Page 41)
E-F216 Replacement Brackets (sold in pairs) for E-2161AB

16.5" Multiple Pattern

LED Colour	LED	Flash Patterns	Voltage	Amps	Pkg
Amber	18 x 1W	19 Patterns	12V	3.1 @ 12V	Box

- SAE J845 Class 1 on 2 Flashes
- SAE J845 Class 2 on 3 Flashes
- Lamp Dimensions: 16-5/8" L x 6-3/8" W x 3" H
- Polycarbonate Base & Lens

EMC IPX5

Mount Type: Surface Mount with Lead Wires



Part No. **E-2160A**



Part No. **E-2160AC**

E-2160 Series



SAE Class 1

Accessories

- F-S956 Fuse/Switch Kit for E-2160A & E-2160AC (see Page 41)
- E-F216 Replacement Brackets (sold in pairs) for E-2160A & E-2160AC

LED Colour	LED	Flash Patterns	Voltage	Amps	Pkg
Amber	18 x 1W	18 Patterns	12V	3.1 @ 12V	Box

- SAE J845 Class 1 on 2 Flashes
- SAE J845 Class 2 on 3 Flashes
- Lamp Dimensions: 16-5/8" L x 6-3/8" W x 3" H
- Polycarbonate Base & Lens

EMC IPX5

Mount Type: Surface Mount with Lead Wires



Part No. **E-2163A**



Part No. **E-2163AC**

E-2163 Series



SAE Class 1 Rotating Flash

Accessories

- F-S956 Fuse/Switch Kit for E-2163A & E-2163AC (see Page 41)
- E-F216 Replacement Brackets (sold in pairs) for E-2163A & E-2163AC

22" Low Profile
(Multiple Pattern)

E-2220 Series



SAE
Class 1

LED Colour	LED	Flash Patterns	Voltage	Amps	Pkg
Amber	40 x 1W	8 Patterns	12V - 24V	3.5 @ 12V	Box

- **SAE J845 Class 1** (Front & Rear Directional) on 2 Flashes
- Lamp Dimensions: 22" L x 5-3/8" W x 1-3/8" H
- Aluminum Housing & Polycarbonate Lens

EMC IP65



Part No. **E-2220A**
Mount Type
Permanent Mount with Bracket & Lead Wires



Part No. **E-2220AC**
Mount Type
Permanent Mount with Bracket & Lead Wires



Part No. **E-2220AM**
Mount Type
Magnetic Mount, Fused Cigarette Power Adaptor with ON/OFF Switch, Flash Selection Switch & 12.8 ft Wire



Part No. **E-2220ACM**
Mount Type
Magnetic Mount, Fused Cigarette Power Adaptor with ON/OFF Switch, Flash Selection Switch & 12.8 ft Wire



Part No. **E-2220AM-1**
Mount Type
Magnetic Mount with 12.8 ft Lead Wire



Part No. **E-2220ACM-1**
Mount Type
Magnetic Mount with 12.8 ft Lead Wire



Magnetic Mount



Permanent Mount with Bracket



Waterproof Connector between harness and light bar allows for easier harness routing

Accessories

- F-S956 Fuse/Switch Kit for E-2220A, E-2220AC, E-2220AM-1 & E-2220ACM-1 (see Page 41)
- E-F224 Replacement Brackets (sold in pairs) for E-2220A & E-2220AC
- E-F2220M Replacement Magnet Set for E-2220AM, E-2220ACM, E-2220AM-1 & E-2220ACM-1

**23" Low Profile
Multiple Pattern**

LED Colour	LED	Flash Patterns	Voltage	Amps	Pkg
Amber	42 x 1W	23 Patterns	12V - 24V	6.2 @ 12V	Box

E-2223AC

- SAE J845 Class 1 3 Flashes
- Lamp Dimensions: 23" L x 6-3/4" W x 2-1/2" H
- Polycarbonate Base & Lens

EMC IP65

Mount Type: Permanent Mount with Lead Wires



Part No. **E-2223AC**



Accessories

- F-S976 Fuse/Switch Kit for E-2223AC (see Page 41)
- E-F223 Replacement Brackets (sold in pairs) for E-2223AC

LED Colour	LED	Flash Patterns	Voltage	Amps	Pkg
Amber	40 x 1W	12 Patterns	12V - 30V	1.0 @ 12V	Box

**E-2232 Series
Amber**

- Lamp Dimensions: 23" L x 3-11/16" W x 1-7/16" H
- Aluminum Housing & Polycarbonate Lens

EMC IP65

Mount Type: Magnetic Mount (magnets with suction cups), Fused Cigarette Power Adaptor with ON/OFF Switch & 12.5 ft Wire



E-2232AM has Waterproof Connector between harness and light bar allows for easier harness routing



Part No. **E-2232AM**



Part No. **E-2232ACM**

LED Colour	LED	Flash Patterns	Voltage	Amps	Pkg
Amber/White	40 x 1W	12 Patterns	12V - 30V	1.7 @ 12V	Box

**E-2232AWM
Amber/White**

- Lamp Dimensions: 23" L x 3-11/16" W x 1-7/16" H
- Aluminum Housing & Polycarbonate Lens

EMC IP65

Mount Type: Magnetic Mount (magnets with suction cups), Fused Cigarette Power Adaptor with ON/OFF Switch & 12.5 ft Wire



Waterproof Connector between harness and light bar allows for easier harness routing



Part No. **E-2232AWM**



**23" Low Profile
Multiple Pattern**

E-2230A



Part No. **E-2230A**

**SAE
Class 1**

LED Colour	LED	Flash Patterns	Voltage	Amps	Pkg
------------	-----	----------------	---------	------	-----

Amber	40 x 1W	8 Patterns	12V - 30V	3.5 @ 12V	Box
-------	---------	------------	-----------	-----------	-----

- **SAE J845 Class 1** (Front & Rear Directional) on 1 Flash
- **SAE J845 Class 2** on all other Flashes
- Lamp Dimensions: 23" L x 3-11/16" W x 1-7/16" H
- Aluminum Housing & Polycarbonate Lens

EMC IP65

Mount Type: Permanent Mount with Adjustable Brackets - 12.8 ft Wire from the Light Bar



E-F200-8 Control Box for Flash Pattern Selection
6" Wire from the Control Box



E-F255



Waterproof Connector between harness and light bar allows for easier harness routing

Accessories

- E-F255 Low Profile Aluminum Brackets (sold in pairs) to Reach Mounted Height of 2" only
- E-F065-8 6.5 ft Extension Wires with Connectors (8-pin)
- E-F260-8 26 ft Extension Wires with Connectors (8-pin)
- E-F200-8 Replacement Control Box



Extension Wires
E-F065-8 / E-F260-8

**43" Low Profile
Multiple Pattern**

E-2243 Series



**SAE
Class 1**

LED Colour	LED	Flash Patterns	Voltage	Amps	Pkg
------------	-----	----------------	---------	------	-----

Amber	72 x 1W	8 Patterns	12V - 24V	6.3 @ 12V	Box
-------	---------	------------	-----------	-----------	-----

- **SAE J845 Class 1** (Front & Rear Directional) on 2 Flashes
- Lamp Dimensions: 43" L x 5-3/8" W x 1-3/8" H
- Aluminum Housing & Polycarbonate Lens

EMC IP65

Mount Type: Permanent Mount with Adjustable Brackets - 12.8 ft Wire from the Light Bar



Part No. **E-2243A**



Part No. **E-2243AC**

Accessories

- E-F224 Replacement Brackets (sold in pair) for E-2243 Series
- E-F281 Replacement Control Box



E-F281 Control Box for Flash Pattern Selection
6" Wire from the Control Box



Waterproof Connector between harness and light bar allows for easier harness routing

45" Multiple Pattern

LED Colour	LED	Flash Patterns	Voltage	Amps	Pkg
Amber	72 x 1W	8 Patterns	12V - 24V	5.6 @ 12V	Box

E-2450A

- **SAE J595 Class 1** (Front & Rear Directional) on 1 Flash
- **SAE J595 Class 3** (Front & Rear Directional) on 3 Flashes
- Lamp Dimensions: 45" L x 3-11/16" W x 1-7/16" H
- Aluminum Housing & Polycarbonate Lens

EMC IP65

Mount Type: Permanent Mount with Adjustable Brackets - 12 ft Wire from the Light Bar



Part No. **E-2450A**



E-F200-8 Control Box for Flash Pattern Selection
6" Wire from the Control Box



E-F255



E-F700-2 Mounted

SAE Class 1

Accessories

- E-F700-2 *Plated Steel Extension Plate (sold in pairs) to extend length of light bar*
- E-F255 *Low Profile Aluminum Brackets (sold in pairs) to Reach Mounted Height of 2" only*
- E-F065-8 *6.5 ft Extension Wires with Connectors (8-pin)*
- E-F260-8 *26 ft Extension Wires with Connectors (8-pin)*
- E-F200-8 *Replacement Control Box*
- E-F250 *Replacement Mounting Brackets (sold in pairs)*



Waterproof Connector between harness and light bar allows for easier harness routing



Extension Wires
E-F065-8 / E-F260-8

****72" LED Warning Light Bar (E-2720A) Available****

LED Colour	LED	Flash Patterns	Voltage	Amps	Pkg
Amber/White	144/18	15 Patterns	12V	3.5 @ 12V	Box

E-2457A

- **SAE J595 Class 1** 4 Flashes
- 16 Amber Colour Modules (warning light)
- 6 White Colour Modules (2 alley light, 4 take down modules)
- Lamp Dimensions: 44-3/4" L x 8" W x 1-1/2" H
- Aluminum Housing & Polycarbonate Lens

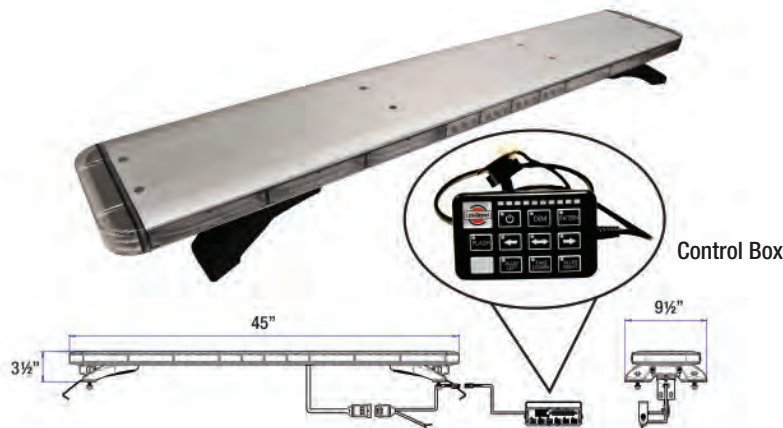
EMC IP68 RoHS

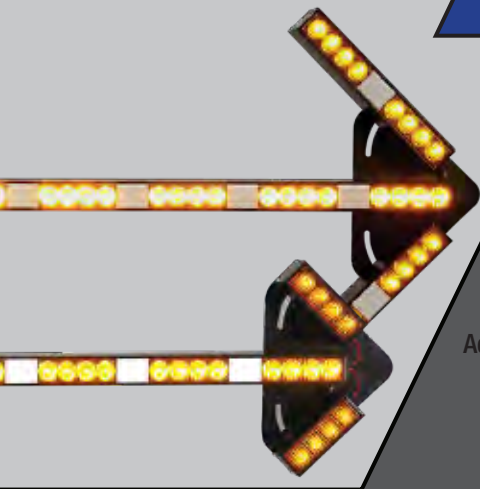
Mount Type: Mounting Straps with 23 ft controller cable & 3.2 ft power cable



Part No. **E-2457A**

SAE Class 1 





LED Colour	Flash Patterns	Voltage	Pkg
Amber	8 Patterns	12V - 24V	Box

- 8 Flash Patterns - **SAE J595 Class 1** on 2 Flashes
- Aluminum Housing & Polycarbonate Lens
- Control Box with Lamp Activation & Flash Selection Switch
- 12-3/4 ft Wire from the Light Bar & 10" Wire from the Control Box
- Mounts with "L" or "T" Brackets (Included)

EMC IP65

Accessories

- E-F291-1 Replacement Control Box
- E-F292 Replacement "L" Bracket (sold in pairs)
- E-F293 Replacement "T" Bracket (sold in pairs)
- E-F297 13 ft Extension Wire w/ Connectors
- E-F298 33 ft Extension Wire w/ Connectors



Extension Wires
E-F297 / E-F298



E-F291-1 Control Box

41" LED Light Stick
Multiple Pattern

Lamp Dimension	LED	Amps
41" L x 2-1/2" D [3" Mounted] x 2" H	32 x 1W	4.1 @ 12V



Part No. **E-2940A**



Part No. **E-2940AC**

45" LED Small Arrow Light Set
Multiple Pattern

Lamp Dimension	LED	Amps
45-1/4" L x 2-1/2" D [3" Mounted] x 10" H	48 x 1W	4.7 @ 12V



Part No. **E-2980A**



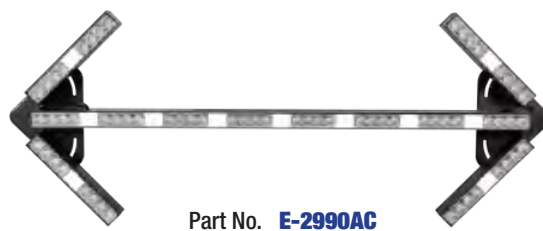
Part No. **E-2980AC**

45" LED Big Arrow Light Set
Multiple Pattern

Lamp Dimension	LED	Amps
45-1/4" L x 2-1/2" D [3" Mounted] x 17-1/2" H	64 x 1W	5.0 @ 12V



Part No. **E-2990A**



Part No. **E-2990AC**

E-2900 Series

Traffic directing made easy with the E-2900 series LED traffic warning light stick and arrow sets. E-2900 series are perfect for use at construction sites, road work and hazardous areas. High power LED diodes ensure greater visibility and increases safety. Made of sturdy aluminum. They are light weight but will not bend. **Foldable arrows for easy storage and transport.**



8"

LED Colour	LED	Flash Patterns	Voltage	Amps	Pkg
Amber	72 x 0.5W	6 Patterns	12V - 36V	0.7 @ 12V	Box

- **SAE J845 Class 1** on 1 Flash
- Lamp Dimensions: 7-7/8" H x 8-5/8" Base Dia.
- Aluminum Base & Polycarbonate Dome

EMC IP65

Mount Type: [Surface Mount with Lead Wires.](#)

Mount Options: 3-1/2" centre or 7" centre.

Accessories

F-S955	<i>Fuse/Switch Kit for E-890A</i>	(see Page 41)	
E-F680	<i>Plate & Bracket Set for Pole Mount or Mirror Arm Mount</i>	(see Page 40)	



E-890A



SAE Class 1

LED Colour	LED	Flash Patterns	Voltage	Amps	Pkg
Amber	8 x 1W	Quad	12V - 40V	1.3 @ 12V	Box

- **SAE J845 Class 1**
- Lamp Dimensions: 7-7/8" H x 8-5/8" Base Dia.
- Aluminum Base with Polycarbonate Amber Lens & Clear Dome

IP65

Mount Type: [Surface Mount with Lead Wires.](#)

Mount Options: 3-1/2" centre or 7" centre.

Accessories

F-S950	<i>Fuse/Switch Kit for E-888AC</i>	(see Page 41)	
E-F680	<i>Plate & Bracket Set for Pole Mount or Mirror Arm Mount</i>	(see Page 40)	



E-888AC

SAE Class 1

LED Colour	LED	Flash Patterns	Voltage	Amps	Pkg
Amber	4 x 1W	Quint	12V - 40V	0.9 @ 12V	Box

- **SAE J845 Class 2**
- Lamp Dimensions: 7-7/8" H x 8-5/8" Base Dia.
- Aluminum Base with Polycarbonate Amber Lens & Clear Dome

IP65

Mount Type: [Surface Mount with Lead Wires.](#)

Mount Options: 3-1/2" centre or 7" centre.

Accessories

F-S950	<i>Fuse/Switch Kit for E-888AC</i>	(see Page 41)	
E-F680	<i>Plate & Bracket Set for Pole Mount or Mirror Arm Mount</i>	(see Page 40)	



E-882AC

SAE Class 2

6.75"

Meets Ontario Snowplow Visibility Requirements

E-728 Series



LED	Flash Patterns	Voltage	Amps	Pkg
16 x 1W	4 Patterns	12V - 24V	2.0 @ 12V	Box

- 3 Colour Settings with 4 Flash Patterns per Colour Setting
- **SAE J845 Class 2** on 2 flashes
- Lamp Dimensions: 6-3/4" L x 6-1/2" Base Dia.
- ABS Base & Polycarbonate Lens

EMC IPX5

Mount Type: Surface Mount or Pole Mount (1" NPT) with Lead Wires.
3 Mounting Holes @ 6" diameter.



Part No. **E-728AB**
LED Colour **Amber/Blue**

Synchronizable with
E-7211AB & E-725AB

3-IN-1 (Amber only; Blue only; Amber/Blue alternating)



Part No. **E-728AW**
LED Colour **Amber/White**

Synchronizable with
E-7211AW & E-725AW

3-IN-1 (Amber only; White only; Amber/White alternating)

Accessories

- F-S9805 Fuse/Switch Kit for E-728AB & E-728AW (see Page 41)
- E-F680 Plate & Bracket Set for Pole Mount or Mirror Arm Mount (see Page 40)
- E-FM600 Magnet Mount Kit with Coiled Wire & Cigarette Power Adaptor (see Page 40)
- E-F560K Vacuum Suction Mount Kit (see Page 40)

6.5"

Meets Ontario Snowplow Visibility Requirements

E-736 Series



LED	Flash Patterns	Voltage	Amps	Pkg
24 x 3W	17 Patterns	12V - 24V	2.0 @ 12V	Box

- Flash Patterns: [7 Dual Colour Alternating & 5 each Single Colour]
- Lamp Dimensions: 6-1/2" L x 6-1/2" Base Dia.
- Aluminum Base & Polycarbonate Lens

EMC IP65

Mount Type: Surface Mount or Pole Mount (1" NPT) with Lead Wires.
3 Mounting Holes @ 6" diameter.



Part No. **E-736AB**
LED Colour **Amber/Blue**

Synchronizable with
E-7315AB

3-IN-1 (Amber only; Blue only; Amber/Blue alternating)

SAE J845 Class 1 on 4 Flashes



Part No. **E-736AW**
LED Colour **Amber/White**

Synchronizable with
E-7315AW

3-IN-1 (Amber only; White only; Amber/White alternating)

SAE J845 Class 1 on 5 Flashes

Accessories

- F-S955 Fuse/Switch Kit for E-736AB & E-736AW (see Page 41)
- E-F680 Plate & Bracket Set for Pole Mount or Mirror Arm Mount (see Page 40)
- E-FM600 Magnet Mount Kit with Coiled Wire & Cigarette Power Adaptor (see Page 40)
- E-F560K Vacuum Suction Mount Kit (see Page 40)

6"

LED Colour	LED	Flash Patterns	Voltage	Amps	Pkg
Amber	3 x 1W	Quad	12V - 110V DC	0.3 @ 12V	Box

- **SAE J845 Class 2**
- Lamp Dimensions: 6-1/4" H x 6-5/8" Base Dia.
- Polycarbonate Base & Lens

EMC IPX5 RoHS

Mount Type: **Surface Mount or Pole Mount (1" NPT) with Lead Wires.**
3 mounting holes @ 6" diameter.

Accessories

- F-S950 *Fuse/Switch Kit for E-661A* (see Page 41)
- E-F680 *Plate & Bracket Set for Pole Mount or Mirror Arm Mount* (see Page 40)
- E-FM600 *Magnet Mount Kit with Coiled Wire & Cigarette Power Adaptor* (see Page 40)
- E-F560K *Vacuum Suction Mount Kit* (see Page 40)

E-661A



SAE Class 2

5"

LED Colour	LED	Flash Patterns	Voltage	Amps	Pkg
Amber	1 x 15W	Rotating	12V - 24V	1.6 @ 12V	Box

- **SAE J845 Class 2**
- Lamp Dimensions: 5-1/4" H x 6-1/2" Base Dia.
- Aluminum Base & Polycarbonate Lens

EMC IP67 RoHS

Mount Type: **Surface Mount with Lead Wires.** 3 mounting holes @ 6" diameter.

Accessories

- F-S950 *Fuse/Switch Kit for E-655A* (see Page 41)
- E-F680 *Plate & Bracket Set for Pole Mount or Mirror Arm Mount* (see Page 40)
- E-FM600 *Magnet Mount Kit with Coiled Wire & Cigarette Power Adaptor* (see Page 40)
- E-F560K *Vacuum Suction Mount Kit* (see Page 40)

E-655A



SAE Class 2 

LED Colour	LED	Flash Patterns	Voltage	Amps	Pkg
Amber	8 x 2W	Rotating	12V - 40V	0.6 @ 12V	Box

- **SAE J845 Class 2**
- Lamp Dimensions: 5" H x 6-1/2" Base Dia.
- ABS Base & Polycarbonate Lens

IP65

Mount Type: **Surface Mount with Lead Wires.** 3 mounting holes @ 6" diameter.

Accessories

- F-S950 *Fuse/Switch Kit for E-650A* (see Page 41)
- E-F680 *Plate & Bracket Set for Pole Mount or Mirror Arm Mount* (see Page 40)
- E-FM600 *Magnet Mount Kit with Coiled Wire & Cigarette Power Adaptor* (see Page 40)
- E-F560K *Vacuum Suction Mount Kit* (see Page 40)

E-650A



SAE Class 2 

5"

E-553A



SAE Class 2

LED Colour	LED	Flash Patterns	Voltage	Amps	Pkg
Amber	8 x 1W	Quad	12V - 40V	1.0 @ 12V	Box

- **SAE J845 Class 2**
- Lamp Dimensions: 5" H x 6-1/2" Base Dia.
- ABS Base & Polycarbonate Lens

IP66

Mount Type: **Surface Mount with Lead Wires.**
3 mounting holes @ 6" diameter.

Accessories

- F-S950 *Fuse/Switch Kit for E-553A* (see Page 41)
- E-F680 *Plate & Bracket Set for Pole Mount or Mirror Arm Mount* (see Page 40)
- E-FM600 *Magnet Mount Kit with Coiled Wire & Cigarette Power Adaptor* (see Page 40)
- E-F560K *Vacuum Suction Mount Kit* (see Page 40)

E-551A



SAE Class 2

LED Colour	LED	Flash Patterns	Voltage	Amps	Pkg
Amber	3 x 1W	Quad	12V - 110V DC	0.3 @ 12V	Box

- **SAE J845 Class 2**
- Lamp Dimensions: 5" H x 6-5/8" Base Dia.
- Polycarbonate Base & Lens

EMC IP65 RoHS

Mount Type: **Surface Mount or Pole Mount (1" NPT) with Lead Wires.**
3 mounting holes @ 6" diameter.

Accessories

- F-S950 *Fuse/Switch Kit for E-551A* (see Page 41)
- E-F680 *Plate & Bracket Set for Pole Mount or Mirror Arm Mount* (see Page 40)
- E-FM600 *Magnet Mount Kit with Coiled Wire & Cigarette Power Adaptor* (see Page 40)
- E-F560K *Vacuum Suction Mount Kit* (see Page 40)

E-250 Series



SAE Class 2

LED Colour	LED	Flash Patterns	Voltage	Amps	Pkg
Amber	3 x 1W	1 Pattern (8-Flash)	12V - 110V DC	0.5 @ 12V	Box

- **SAE J845 Class 2**
- Polycarbonate Base & Lens

EMC IPX7



Part No. **E-250A**
2-Bolt Surface Mount
2 mounting holes @ 3-3/8" centre
5-1/8" H x (2-7/8" x 3-7/8") Base



Part No. **E-250AM**
Magnetic Mount with Cigarette Power Adaptor
5-3/8" H x 2-7/8" Base Dia.

Accessories

- E-F950 *Fuse/Switch Kit for E-250A*

4.5" - 4"

LED Colour	LED	Flash Patterns	Voltage	Amps	Pkg
Amber	8 x 2W	Quad	12V - 40V	1.2 @ 12V	Box

- **SAE J845 Class 1**
- Lamp Dimensions: 4-5/8" H x 5-7/8" Base Dia.
- Rubber Base & Polycarbonate Lens

IP65



Part No. **E-450AD**
Surface Mount
2 Mounting Studs (#8) on 4" diameter



Part No. **E-450ADM**
Magnetic Mount with Cigarette
Power Adaptor

E-450 Series



SAE Class 1

Accessories

- F-S950 *Fuse/Switch Kit for E-450AD* (see Page 41)
- E-F680 *Plate & Bracket Set for Pole Mount or Mirror Arm Mount* (see Page 40)
- E-F560K *Vacuum Suction Mount Kit* (see Page 40)

LED Colour	LED	Flash Patterns	Voltage	Amps	Pkg
Amber	8 x 2W	5 Patterns	12V - 50V	1.5 @ 12V	Box

- **SAE J845 Class 1** on Quad Flash
- **SAE J845 Class 2** on Rotating Flash
- Switch (ST109) Included for Flash Pattern Selection
- Lamp Dimensions: 4-1/2" H x 6-1/2" Base Dia.
- Aluminum Base & Polycarbonate Lens

IP65

Mount Type: **Surface Mount with Lead Wires.**
3 mounting holes @ 6" diameter

Accessories

- F-S950 *Fuse/Switch Kit for E-450AD* (see Page 41)
- E-F680 *Plate & Bracket Set for Pole Mount or Mirror Arm Mount* (see Page 40)
- E-FM600 *Magnet Mount Kit with Coiled Wire & Cigarette Power Adaptor* (see Page 40)
- E-F560K *Vacuum Suction Mount Kit* (see Page 40)

E-658A



SAE Class 1 

LED Colour	LED	Flash Patterns	Voltage	Amps	Pkg
Amber	30	Rotating	12V	0.1 @ 12V	Box

- Lamp Dimensions: 4" H x 5" Base Dia.
- ABS Base & Polycarbonate Lens

IP66

Mount Type: **Surface Mount with Lead Wires.** 3 mounting holes @ 4-5/8" diameter

Accessories

- F-S950 *Fuse/Switch Kit for E-350A* (see Page 41)
- E-F680 *Plate & Bracket Set for Pole Mount or Mirror Arm Mount* (see Page 40)
- E-FM600 *Magnet Mount Kit with Coiled Wire & Fused Cigarette Power Adaptor* (see Page 40)
- E-F560K *Vacuum Suction Mount Kit* (see Page 40)

E-350A





3.75"

E-330 Series



Flash Patterns	Voltage	Amps	Pkg
----------------	---------	------	-----

Quad 12V - 40V 0.2 @ 12V Box

- Lamp Dimensions: 3-3/4" H x 5" Base Dia.
- ABS Base & Polycarbonate Lens

IP66



Part No. **E-330A**
Colour **Amber**
LED **3 x 1W**

Surface Mount with Lead Wires,
3 Mounting Holes @ 4-3/4" diameter



Part No. **E-330W**
Colour **White**
LED **30 diodes**

Surface Mount with Lead Wires,
3 Mounting Holes @ 4-3/4" diameter



Part No. **E-330AM**
Colour **Amber**
LED **3 x 1W**

Magnetic Base with Fused Cigarette
Power Adaptor



Part No. **E-332AM**
Colour **Amber**
LED **3 x 1W**

Magnetic Base with Fused Cigarette
Power Adaptor, ON/OFF Switch



Part No. **E-330BM**
Colour **Blue**
LED **3 x 1W**

Magnetic Base with Fused Cigarette
Power Adaptor

Accessories

- F-S950 Fuse/Switch Kit for E-330A & E-330W (see Page 41)
- E-F680 Plate & Bracket Set for Pole Mount or Mirror Arm Mount (see Page 40)

E-336 Series



SAE
Class 2

LED Colour	LED	Flash Patterns	Voltage	Amps	Pkg
------------	-----	----------------	---------	------	-----

Amber 3 x 1W 5 Patterns 12V - 110V DC 0.3 @ 12V Box

- SAE J845 Class 2 on all Flashes
- Lamp Dimensions: 3-3/4" H x 5-1/8" Base Dia.
- Polycarbonate Base & Lens

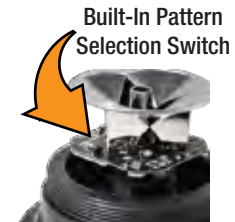
EMC IP66 RoHS



Part No. **E-336A**
Surface Mount with Lead Wires
3 holes @ 4-9/16" diameter



Part No. **E-336AM**
Magnetic Mount with Cigarette
Power Adaptor



Accessories

- F-S950 Fuse/Switch Kit for E-336A (see Page 41 for details)
- E-F680 Plate & Bracket Set for Pole Mount or Mirror Arm Mount (see Page 40 for details)

3.25"

LED Colour	LED	Flash Patterns	Voltage	Amps	Pkg
Amber	3 x 1W	5 Pattern	12V - 110V DC	0.5 @ 12V	Box

- SAE J845 Class 2 on all Flashes
- Lamp Dimensions: 3-1/4" H x 5-5/8" Base Dia.
- Polycarbonate Base & Lens

EMC IP65 RoHS



Part No. **E-530A**
Surface Mount with Lead Wires
3 holes @ 5-5/16" diameter



Part No. **E-530AM**
Magnetic Mount with Cigarette
Power Adaptor



E-530 Series

SAE
Class 2

Accessories

- F-S950 Fuse/Switch Kit for E-530A (see Page 41)
- E-F680 Plate & Bracket Set for Pole Mount or Mirror Arm Mount (see Page 40)

Customized Displays



Customized Merchandisers help promote your best selling LED Lights.

(Displays can be custom built with options from our 2019 Warning Light Catalog.)

Contact your Sales Representative or Customer Service for Details.



**Synchronizable
Multiple Pattern**

E-72 Series



**SAE
Class 1**

Synchronizable

LED	Flash Patterns	Voltage	Amps	Pkg
18 x 1W	4 Patterns	12V - 24V	0.5 @ 12V	Retail Bag

- 3 Colour Settings with 4 Flash Patterns per Colour Setting
- **SAE J845 Class 1** on 2 flashes
- Lamp Dimensions: 6" L x 1-3/8" W x 1-1/4" H
- Aluminum Base, ABS Bracket & Polycarbonate Lens

EMC IP65

Mount Type: Surface Mount with Lead Wires. 2 Holes @ 5-1/2" centres



Part No. **E-725AB**
Colour **Amber/Blue**

Synchronizable with
E-728AB & E-7211AB



Part No. **E-725AW**
Colour **Amber/White**

Synchronizable with
E-728AW & E-7211AW



Part No. **E-725BR**
Colour **Blue/Red**

Accessories

F-S9805 Fuse/Switch Kit for E-728AB & E-728AW (see Page 41)

**Super Low Profile (1/4")
Multiple Pattern**

E-916 Series



**SAE
Class 1**

LED	Flash Patterns	Voltage	Amps	Pkg
6	23 Patterns	12V - 24V	0.6 @ 12V	Retail Bag

- Lamp Dimensions: 5-1/8" L x 1-1/4" W x 1/4" H
- Aluminum Base & Polycarbonate Lens

IPX8 RoHS

Mount Type: Surface Mount (Screw On or Stick On) with Lead Wires.
2 holes @ 4-3/4" centres.

- E-916AA** - Amber/Amber **SAE Class 1 on 5 Flashes**
- E-916AB** - Amber/Blue
- E-916AW** - Amber/White
- E-916BB** - Blue/Blue **SAE Class 1 on 4 Flashes, Class 2 on 1 Flash**
- E-916BR** - Blue/Red
- E-916GG** - Green/Green
- E-916RR** - Red/Red **SAE Class 1 on 5 Flashes**
- E-916WW** - White/White **SAE Class 1 on 5 Flashes**



Accessories

F-S936 Fuse/Switch Kit for E-916 Series (see Page 41)

**Super Low Profile (1/4"~1/3")
Multiple Pattern**

LED Colour	LED	Flash Patterns	Voltage	Amps	Pkg
Amber	3	12 Patterns	12V - 24V	0.6 @ 12V	Retail Bag

- **SAE J595 Class 1** on 6 flashes
- Lamp Dimensions: 3-1/2" L x 1-1/4" W x 1/4" H
- Aluminum Base & Polycarbonate Lens

IPX8

Mount Type: Surface Mount with Lead Wires. 2 holes @ 3" centres.



Accessories

F-S936 Fuse/Switch Kit for E-912A (see Page 41)

E-912A



**SAE
Class 1**

LED Colour	LED	Flash Patterns	Voltage	Amps	Pkg
Amber/Amber	3 x 1.5W	14 Patterns	12V - 36V	0.7 @ 12V	Retail Bag

- **SAE J845 Class 1** on 5 flashes
- Lamp Dimensions: 5-1/8" L x 1-1/4" W x 1/3" H
- Aluminum Base & Polycarbonate Lens

IP65

Mount Type: Surface Mount (Screw On or Stick On) with Lead Wires. 2 holes @ 4-3/4" centres.



Accessories

F-S975 Fuse/Switch Kit for E-917AA (see Page 41)
Mounting Brackets (See Page 28)

E-917AA



**SAE
Class 1**

**Low Profile (3/4")
Multiple Pattern**

LED	Flash Patterns	Voltage	Pkg
3	12 Patterns	12V - 24V	Retail Bag

- Lamp Dimensions: 3-3/8" L x 1-1/4" W x 11/16" H
- Aluminum Base & Polycarbonate Lens

Mount Type: Surface Mount with Lead Wires. 2 holes @ 3-1/16" centres.

- **E-913A** - Amber **SAE Class 2 on 2 Flashes** 0.2 Amps @ 12V
- **E-913R** - Red **SAE Class 1 on 7 Flashes** 0.2 Amps @ 12V
- **E-913W** - White **SAE Class 2 on 2 Flashes** 0.4 Amps @ 12V



Accessories

F-S936 Fuse/Switch Kit for E-913 Series (see Page 41)

E-913 Series



SAE Class 1 SAE Class 2

Low Profile (3/4")
Multiple Pattern

Various mounting brackets available for surface mount, grill mount, dash mount & headliner mount.

E-915 Series



SAE Class 1



Accessories

- F-S936 Fuse/Switch Kit for E-915 Series (see Page 41)
- E-F951 "L" Bracket for mounting single E-915
- E-F952 "L" Bracket for mounting double E-915
- E-F953 "T" Bracket for mounting E-915
- E-F954 Adjustable Swivel Bracket

LED	Flash Patterns	Voltage	Pkg
6	19 Patterns	12V - 24V	Retail Bag

- Lamp Dimensions: 5" L x 1" W x 11/16" H
- Aluminum Base & Polycarbonate Lens

EMC IPX7

Mount Type: Surface Mount with Lead Wires. 2 holes @ 4-3/4" centres.

E-915AA	- Amber/Amber	SAE Class 1 on 5 Flashes	0.5 Amps @ 12V
E-915AW	- Amber/White		0.7 Amps @ 12V
E-915WW	- White/White	SAE Class 1 on 5 Flashes	0.8 Amps @ 12V
E-915BB	- Blue/Blue	SAE Class 1 on 5 Flashes	0.6 Amps @ 12V
E-915BR	- Blue/Red		0.6 Amps @ 12V
E-915GG	- Green/Green		0.5 Amps @ 12V
E-915RR	- Red/Red	SAE Class 1 on 5 Flashes	0.6 Amps @ 12V



E-F953



E-F954



E-F951



E-F952

Narrow Profile (1/2")
Multiple Pattern

E-905A



SAE Class 1

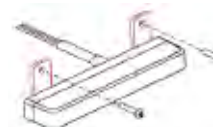
LED Colour	LED	Flash Patterns	Voltage	Amps	Pkg
Amber	3 x 1W	16 Patterns	12V - 24V	0.8 @ 12V	Retail Bag

- **SAE J845 Class 1** on 6 flashes
- Lamp Dimensions: 5-1/8" L x 1-1/8" D x 5/8" H
- Aluminum Base & Polycarbonate Lens

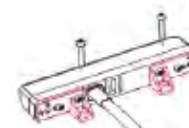
EMC IPX8 RoHS

Mount Type: Flexible Mounting Options include 2 sets of Mounting Brackets.

Universal Bracket



L-Bracket



Accessories

- F-S936 Fuse/Switch Kit for E-905A (see Page 41 for details)

Multiple Patterns

LED Colour	LED	Flash Patterns	Voltage	Amps	Pkg
Amber	4	18 Patterns	12V - 24V	0.6 @ 12V	Retail Bag

- **SAE J595 Class 1** on 3 flashes
- Lamp Dimensions: 4-3/4" L x 1-1/2" W x 1-3/8" H
- Aluminum Base & Polycarbonate Lens

EMC IP65 RoHS

Mount Type: Surface Mount with Lead Wires. 2 holes @ 4-3/8" centres.

E-960A



SAE Class 1



Part No. **F-960A**



Part No. **F-960A-2K**
Dual Lamp Kit with "Try Me" Button

Accessories

F-S955 Fuse/Switch Kit for E-960A (see Page 41 for details)

Quad Flash

LED	Flash Patterns	Voltage	Amps	Pkg
4	Quad	9V - 36V	0.4 @ 12V	Retail Bag

- Lamp Dimensions: 4-3/4" L x 1-7/8" W x 1-5/8" H
- Aluminum Base & Polycarbonate Lens

EMC IP67

Mount Type: Surface Mount with Lead Wires. 2 holes @ 4-1/2" centres.

E-950 Series



SAE Class 2



Part No. **E-950A**
Colour **Amber**



Part No. **E-950CA**
Colour **Amber**



Part No. **E-950CW**
Colour **White**



Part No. **E-950G**
Colour **Green**



Part No. **E-950CG**
Colour **Green**



Part No. **E-950B**
Colour **Blue**



Part No. **E-950R**
Colour **Red**

Accessories

F-S950 Fuse/Switch Kit for E-950 Series (see Page 41 for details)

4" Round Series

Uses regular open or closed back grommets and double contact pigtails. Convenient and easy to install. Lamp kits with grommet, pigtail & mounting bracket available for instant installation. Also available in rubber housing just like a work lamp for permanent mount or magnetic mount.

E-940 Series



SAE
Class 2

LED	Flash Patterns	Voltage	Amps	Pkg
24	Quad	9V - 36V	0.4 @ 12V	Retail Bag

- SAE J595 Class 2
- Lamp Dimensions: 4-1/4" Dia. x 1-3/4" H
- Polycarbonate Body & Lens

EMC IP67

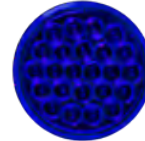
Accessories: F-S950 Fuse/Switch Kit for E-940 Series (see Page 41)



Part No. **E-940A**
Colour **Amber**



Part No. **E-940CA**
Colour **Amber**



Part No. **E-940B**
Colour **Blue**



Part No. **E-940R**
Colour **Red**

Lamp Kits with Open Back Grommet & Double Contact Pigtail



Part No. **E-940A-K**
Colour **Amber**



Part No. **E-940CA-K**
Colour **Amber**



Part No. **E-940B-K**
Colour **Blue**



Part No. **E-940R-K**
Colour **Red**

Lamp Kits with Black Steel Mounting Bracket, Open Back Grommet & Double Contact Pigtail



Part No. **E-940A-KM**
Colour **Amber**



Part No. **E-940CA-KM**
Colour **Amber**



Part No. **E-940B-KM**
Colour **Blue**



Part No. **E-940R-KM**
Colour **Red**

Rubber Assembly



Part No. **EH-940A**
Colour **Amber**



Part No. **EH-940CA**
Colour **Amber**



Part No. **EH-940B**
Colour **Blue**



Part No. **EH-940R**
Colour **Red**



Part No. **EHM-940A**
Colour **Amber**



Part No. **EHM-940CA**
Colour **Amber**



Part No. **EHM-940B**
Colour **Blue**



Part No. **EHM-940R**
Colour **Red**

E-920 & E-921 are the same dimensions as an oval tail lamp. Uses regular open or closed back grommets and double contact pigtailed. Convenient and easy to install. Lamp kits with grommet, pigtail & mounting bracket available for instant installation.

6.5" Oval Series

LED	Flash Patterns	Voltage	Amps	Pkg
24	Quad	9V - 36V	0.4 @ 12V	Retail Bag

- **SAE J595 Class 2**
- Lamp Dimensions: 6-1/2" L x 2-1/4" W x 1-3/4" H
- Polycarbonate Body & Lens

EMC IP67

Accessories: F-S950 Fuse/Switch Kit for E-920 Series (see Page 41)



Part No. **E-920A**
Colour **Amber**



Part No. **E-920CA**
Colour **Amber**



Part No. **E-920B**
Colour **Blue**



Part No. **E-920R**
Colour **Red**



E-920 Series

SAE Class 2

Lamp Kits with Open Back Grommet & Double Contact Pigtail



Part No. **E-920A-K**
Colour **Amber**



Part No. **E-920CA-K**
Colour **Amber**



Part No. **E-920B-K**
Colour **Blue**



Part No. **E-920R-K**
Colour **Red**

Lamp Kits with Black Steel Mounting Bracket, Open Back Grommet & Double Contact Pigtail



Part No. **E-920A-KM**
Colour **Amber**



Part No. **E-920CA-KM**
Colour **Amber**



Part No. **E-920B-KM**
Colour **Blue**



Part No. **E-920R-KM**
Colour **Red**

LED Colour	LED	Flash Patterns	Voltage	Amps	Pkg
Amber	35	Sequential Arrows	9V - 36V	0.4 @ 12V	Retail Bag

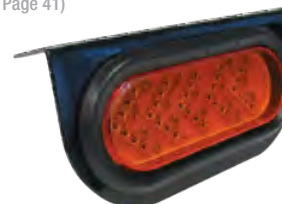
- Lamp Dimensions: 6-1/2" L x 2-1/4" W x 2" H
- Polycarbonate Body & Lens
- Sequential Flash Fills Lamp & Repeats

IP67

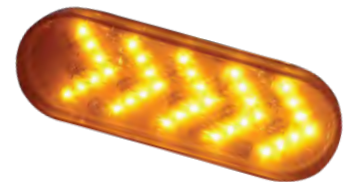
Accessories: F-S950 Fuse/Switch Kit for E-921A (see Page 41)



Part No. **E-921A-K**
Kit with Grommet & Pigtail



Part No. **E-921A-KM**
Kit with Mounting Bracket, Grommet & Pigtail



E-921A

Mini Dual Warning Light Sets

Each set contains 2 LED synchronized strobe heads. Strobe heads can be mounted inside head or tail lamp assemblies or surface mounted. All necessary mounting hardware included.

E-986 Series



LED	Flash Patterns	Voltage	Amps	Pkg
6	19 Patterns	12V	0.7 @ 12V	Box

- Each Light Set consists of:
 - 2 LED Strobe Heads in Chrome Aluminum Base, Polycarbonate Lens with waterproof connectors
 - 2 Black Flanges
 - Control Box
 - Gaskets & Screws
- Lamp Dimensions: 1-1/2" Dia. x 1-1/16" H

IPX7

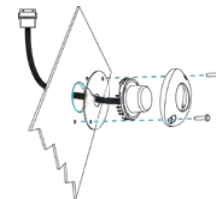
Mount Type: 2 Mounting Holes @ 1-9/32" centres.



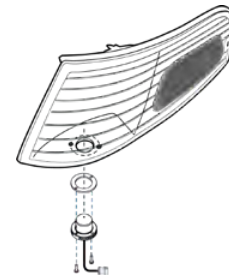
Part No. **E-986CAK**
Colour **Amber**



Part No. **E-986CWK**
Colour **White**



Surface Mount



Head Lamp/Tail Lamp
Assembly Mount



Accessories

- F-S955 Fuse/Switch Kit for E-986 Series (see Page 41)
- E-F985-5 Chrome Flange

LED Steady Utility Light

E-955C



LED Colour	LED	Flash Patterns	Voltage	Amps	Pkg
White	4	Steady	12V	0.5 @ 12V	Retail Bag

- Lamp Dimensions: 4-3/4" L x 1-7/8" W x 1-5/8" H
- Aluminum Base & Polycarbonate Lens

IP67

Mount Type: Surface Mount with Lead Wires. 2 holes @ 4-1/2" centres.

6.5"

LEDM406x Series

LED 18 Flash Patterns Flashing/Steady ON Pkg Bulk

- Comes with ON/OFF Switch
- Lamp Dimensions: 6-3/8" L x 4" W x 2-1/4" H
- ABS Base & Acrylic Lens
- Use 4 AA Batteries (not included)



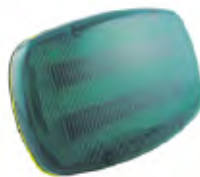
Colour **Amber**
 Function **Warning SAE "T"**
 Part No. **LEDM4065-18AC**
(clamshell)
LEDM4065-18A
(bulk)



Colour **Red**
 Function **Warning SAE "T"**
 Part No. **LEDM4065-18RC**
(clamshell)
LEDM4065-18R
(bulk)



LEDM4065 Back



Colour **Green**
 Function **Flashing/Steady ON**
 Part No. **LEDM4065-18GC**
(clamshell)
LEDM4065-18G
(bulk)



Colour **White**
 Function **Flashing/Steady ON**
 Part No. **LEDM4065-18WC**
(clamshell)
LEDM4065-18W
(bulk)



LEDM4066 Back



Part No. **LEDM4066-18A**
(retail box)
 Colour **Amber**
 Function **Warning**



Part No. **LEDM4066-18R**
(retail box)
 Colour **Red**
 Function **Warning**

Warning Lamps with Heavy Duty Magnet



LEDM4165 Back



Colour **Amber**
 Function **Warning SAE "T"**
 Part No. **LEDM4165-18AP**
(retail bag)
LEDM4165-18A
(bulk)



Colour **Red**
 Function **Warning SAE "T"**
 Part No. **LEDM4165-18RP**
(retail bag)
LEDM4165-18R
(bulk)

Warning Lamps with Mounting Bracket



Part No. **LEDH4065-18A**
 Colour **Amber**
 Function **Warning SAE "T"**



Part No. **LEDH4065-18R**
 Colour **Red**
 Function **Warning SAE "T"**

4.5"

E-480 Series



LED	Flash Patterns	Pkg
20	Rotating	Retail Bag

- Comes with ON/OFF Switch
- Lamp Dimensions: 4-1/2" H x 5" Base Dia.
- Polycarbonate Lens
- Use 4 AA Batteries (not included)

IP65

ON/OFF Switch



Part No. **E-480AM**
Colour **Amber**
Magnetic Base



Part No. **E-480BM**
Colour **Blue**
Magnetic Base



Part No. **E-480AB**
Colour **Amber**
Bracket Mount

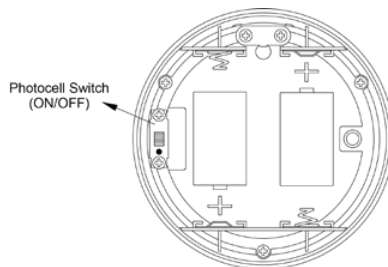
E-460AM



LED Colour	LED	Flash Pattern	Pkg
Amber	15	Quad	Box

- Comes with **Photocell Switch** & ON/OFF Switch
- Lamp Dimensions: 4-1/2" H x 4" Base Dia.
- ABS Base & Polycarbonate Lens
- Use 2 D Batteries (not included)

Mount Type: **Magnetic Base**



****The Photocell Switch** is a technology that allows a built-in sensor to detect the surrounding environment and will only turn ON in the dark.

4"

LED Colour	LED	Flash Pattern	Pkg
Amber	4	Single	Retail Bag

- Comes with ON/OFF Switch
- Lamp Dimensions: 4" H x 4-3/4" Base Dia.
- Polycarbonate Base & Lens
- Use 2 AA Batteries (not included)

IP65

Mount Type: **Magnetic Base**

E-420AM



LED Colour	LED	Flash Pattern	Pkg
Amber	15	Rotating / Double	Retail Bag

- Comes with ON/OFF Switch & Pattern Selection Switches
- Lamp Dimensions: 4" H x 4" Base Dia.
- Polycarbonate Base & Lens
- Use 4 AA Batteries (not included)

Mount Type: **Magnetic Base**



ON/OFF Pattern Selection Switch

E-438AM



LED Colour	LED	Flash Pattern	Pkg
Amber	36	Quad	Retail Bag

- Comes with ON/OFF Switch
- Lamp Dimensions: 4" H x 4-1/8" Base Dia.
- Polycarbonate Base & Lens
- Use 4 AA Batteries (not included)

Mount Type: **Magnetic Base**

E-440AM



8"

C-883 Series



SAE Class 2

Flash Pattern	Joules	Voltage	Amps	Pkg
Double/Quad	17	12V - 24V	2.3 @ 12V	Box

- Lamp Dimensions: 7-7/8" H x 8-5/8" Base Dia.
- Aluminum Base with Polycarbonate Lens & Clear Dome

EMC IP65

Mount Type: **Surface Mount with Lead Wires.**

Mounting Options: **3-1/2" centre or 7" centre.**



Part No. **C-883AC**
Colour **Amber**
SAE J845 Class 2



Part No. **C-883BC**
Colour **Blue**

Accessories

- F-S950 Fuse/Switch Kit for C-883 Series (see Page 41)
- E-F680 Mounting Plate & Bracket Set for mounting pole or mirror arm (see Page 40)
- CB-883 Replacement Flash Bulb for C-883AC
- CC-880 Replacement Clear Dome
- CL-550A Replacement Amber Lens for C-883AC
- CL-550B Replacement Blue Lens for C-883BC

C-R880 Series



SAE Class 1

Flash Pattern	Bulb	Voltage	Amps	Pkg
Single Rotating @ 150 RPM	H1	12V	5.0 @ 12V	Box

- Lamp Dimensions: 7-3/4" H x 8-3/4" Base Dia.
- Aluminum Base with Polycarbonate Lens

EMC IP65

Mount Type: **Surface Mount with Lead Wires.**

Mounting Options: **3-1/2" centre or 7-1/16" centre.**



Part No. **C-R880A**
Colour **Amber**
SAE J845 Class 1



Part No. **C-R880B**
Colour **Blue**

Accessories

- F-S970 Fuse/Switch Kit for C-R880 Series (see Page 41)
- E-F680 Mounting Plate & Bracket Set for mounting pole or mirror arm (see Page 40)
- CL-R880A Replacement Amber Lens for C-R880A
- CL-R880B Replacement Blue Lens for C-R880B

5"

Flash Patterns	Joules	Voltage	Amps	Pkg
Double/Quad w/ High/Low Intensity Option	17	12V - 24V	2.3 @ 12V	Box

- Lamp Dimensions: 4-3/4" H x 6-7/16" Base Dia.
- Aluminum Base with Polycarbonate Lens

EMC IP66

Mount Type: **Surface Mount with Lead Wires via 3 Mounting Holes 3/16" each on 6" diameter.**
Pole Mount uses 1" pipe thread NPT (pipe not included).



Part No. **C-553A**
 Colour **Amber**
 SAE J845 Class 2



Part No. **C-553B**
 Colour **Blue**

C-553 Series



SAE
Class 2

Accessories

- F-S950 *Fuse/Switch Kit for C-553 Series* (see Page 41)
- E-F680 *Mounting Plate & Bracket Set for mounting pole or mirror arm* (see Page 40)
- E-FM600 *Magnetic Mount Kit with Coiled Wire and Cigarette Adaptor* (see Page 40)
- E-F560K *Vacuum Suction Mount Kit* (see Page 40)
- CB-553 *Replacement Flash Bulb for C-553A & C-553B*
- CL-553A *Replacement Amber Lens for C-553A*
- CL-553B *Replacement Blue Lens for C-553B*

Flash Patterns	Joules	Voltage	Amps	Pkg
Double/Quad	12	12V - 48V	2.0 @ 12V	Box

- Lamp Dimensions: 5" H x 6-1/2" Base Dia.
- ABS Base & Polycarbonate Lens

EMC IP66

Mount Type: **Surface Mount with Lead Wires via 3 Mounting Holes on 6" diameter.**



Part No. **C-550A**
 Colour **Amber**



Part No. **C-550B**
 Colour **Blue**

SAE J1318 Class 2 on Double Flash
SAE J1318 Class 3 on Quad Flash

C-550 Series



SAE
Class 2

Accessories

- F-S950 *Fuse/Switch Kit for C-550 Series* (see Page 41)
- E-F680 *Mounting Plate & Bracket Set for mounting pole or mirror arm* (see Page 40)
- E-FM600 *Magnetic Mount Kit with Coiled Wire and Cigarette Adaptor* (see Page 40)
- E-F560K *Vacuum Suction Mount Kit* (see Page 40)
- CB-550 *Replacement Flash Bulb for C-550A & C-550B*
- CL-550A *Replacement Amber Lens for C-550A*
- CL-550B *Replacement Blue Lens for C-550B*

4.5"

C-450 Series



Flash Pattern	Joules	Voltage	Amps	Pkg
Single	3	12V - 48V	0.3 @ 12V	Box

- Lamp Dimensions: 4-1/2" H x 5-1/2" Base Dia.
- Rubber Base & Polycarbonate Lens

IP65

Mount Type: 2 Mounting Studs (#8 screws) on 4" diameter.



Part No. **C-450AD**
Colour **Amber**



Part No. **C-450BD**
Colour **Blue**

Accessories

- F-S950 Fuse/Switch Kit for C-450 Series (see Page 41)
- E-F680 Mounting Plate & Bracket Set for C-450AD (see Page 40)
- E-F560K Vacuum Suction Mount Kit (see Page 40)
- CB-450 Replacement Flash Bulb for C-450 Series
- CL-550A Replacement Amber Lens for C-450AD
- CL-550B Replacement Blue Lens for C-450BD

4"

C-330 Series



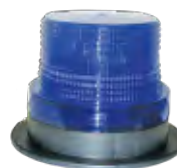
Flash Pattern	Joules	Voltage	Amps	Pkg
Single	2	12V - 120V DC	0.3 @ 12V	Box

- Lamp Dimensions: 4" H x 5" Base Dia.
- ABS Base & Polycarbonate Lens

EMC IP66



Part No. **C-330A**
Colour **Amber**
Mount Type
Permanent Mount with 3 Mounting
Holes on 4-3/4" diameter



Part No. **C-330B**
Colour **Blue**
Mount Type
Permanent Mount with 3 Mounting
Holes on 4-3/4" diameter



Part No. **C-330AM**
Colour **Amber**
Mount Type
Magnetic Mount with 3 Mounting
Holes on 4-3/4" diameter
Power Adaptor

Accessories

- F-S950 Fuse/Switch Kit for C-330A & C-330B (see Page 41)
- E-F680 Mounting Plate & Bracket Set for mounting pole or mirror arm (see Page 40)
- CB-330 Replacement Flash Bulb for C-330 Series
- CL-330A Replacement Amber Lens for C-330A & C-330AM
- CL-330B Replacement Blue Lens for C-330B & C-330BM



Part No. **C-330BM**
Colour **Blue**
Mount Type
Magnetic Base with Cigarette
Power Adaptor

Towmotor Application

Colour	Flash Patterns	Joules	Voltage	Amps	Pkg
Amber	Single	2	12V - 120V DC	0.5 @ 12V	Box

- Lamp Dimensions: 5" H x 2-3/4" Base Dia.
- ABS Base & Polycarbonate Lens

EMC IP66

Mount Type: **Surface Mount with Lead Wires**
2 mounting holes @ 3-3/8" centers

Accessories

F-S950	Fuse/Switch Kit for C-250A	(see Page 41)
CB-250	Replacement Flash Bulb for C-250A	
CL-250A	Replacement Amber Lens for C-250A	

C-250A



Dual Quad Flash Strobe Light Bar in alternating sequence. Centre mirrored reflector doubles the effect of the strobe. Small compact design suitable for fitting in a variety of locations.

Dual Strobe Light Bar

Colour	Flash Patterns	Voltage	Amps	Pkg
Amber	Alternating Quad Flash	12V	1.8 @ 12V	Box

- **SAE J845 Class 2**
 - Lamp Dimensions: 1 6" L x 8-1/2" W x 6" H
 - ABS Base with Polycarbonate Dome & Lens
- Mount Type: **Surface Mount with Lead Wires.**
4 mounting screws @ 12-3/4" & 5-1/4" centres

Accessories

F-S950	Fuse/Switch Kit for C-100A	(see Page 41)
--------	----------------------------	---------------

C-100A



SAE
Class 2

SAE Class 1, Class 2 or Class 3? Not sure what to use on your application?

Class 1 Optical Warning Device is a primary optical warning device for use on authorized emergency vehicles responding to emergency situations. These devices are utilized to capture the attention of motorists and pedestrians to warn them of a potentially hazardous activity or situation. Examples of emergency vehicles are police vehicles, fire trucks and ambulances.

Class 2 Optical Warning Device is a primary optical warning device for use on authorized maintenance or service vehicles to warn others of traffic hazards such as a lane blockage or slow moving vehicle. Examples of maintenance or service vehicles are tow trucks, snow plow vehicles, Department of Highway Road maintenance vehicles and other slow moving vehicles.

Class 3 Optical Warning Device is a primary optical warning device for use on vehicles authorized to display an optical warning device for identification only.

Vacuum Suction Mounting Cup

Adaptive mounting options for multiple situations wherever you are.
Great for mounting light without drilling holes and for non metallic surfaces
such as aluminum, fiberglass, etc.



- 6" diameter mounting cup
- Pump plunger to activate vacuum suction
- Indicator to monitor suction strength
- Comes with protective cover for storage

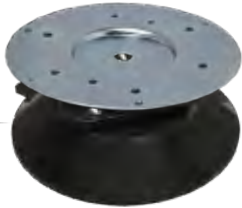
Threaded mounting hole: 3/8" depth
Use bolt with M6x1.0 thread

Part No. **E-F560**

Optional mounting plate for use with E-F560
6.5" round plated steel plate



Part No. **E-F600**



Mounting Suction Cup
with Mounting Plate Kit
(E-F560 + E-F600)

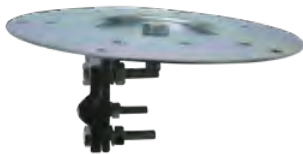
Part No. **E-F560K**

Mounting Plate & Bracket Set

For use with Pole Mount or Mirror Arm Mount



Part No. **E-F680**
Pole Mount



Part No. **E-F680**
Mirror Arm Mount

Mounting Plate & Bracket Set consisting of:

- 6-1/2" Round Plated Steel Base Mount
- Brushed Aluminum Mirror Mounting Bracket with 1/2" centred mounting hole

Pkg: Bulk

Magnet Mount Kit

To convert Lamp to Magnetic Mount



Magnetic Mount Kit consisting of:

- 6-1/2" Round Plated Steel Base Mount with Magnet & Rubber Housing
- Coiled Wire & Cigarette Power Adaptor

Pkg: Bulk

Part No. **E-FM600**

Fuse/Switch Kits

Part No. **F-S9805** Pkg: Retail Bag

- SWP4300 - Switch Panel w/ Pilot Lights
- ST100 (x3) - ON-OFF Toggle Switches
- ST108 (x1) - OFF-MomentaryON Toggle Switch
- ATM05 - 5 Amps Mini Fuse
- ATMF14C - In-Line Fuse Holder

Part No. **F-S9810** Pkg: Retail Bag

- SWP4300 - Switch Panel w/ Pilot Lights
- ST100 (x3) - ON-OFF Toggle Switches
- ST108 (x1) - OFF-MomentaryON Toggle Switch
- ATM10 - 10 Amps Mini Fuse
- ATMF14C - In-Line Fuse Holder

Part No. **F-S936** Pkg: Retail Bag

- ST307 - OFF-ON-Momentary ON Switch
- ATM05 - 5 Amps Mini Fuse
- ATMF14C - In-Line Fuse Holder

Part No. **F-S950** Pkg: Retail Bag

- ST100 - ON-OFF Toggle Switch
- ATM05 - 5 Amps Mini Fuse
- ATMF14C - In-Line Fuse Holder

Part No. **F-S955** Pkg: Retail Bag

- ST100 - ON-OFF Toggle Switch
- ST108 - OFF-MomentaryON Toggle Switch
- ATM05 - 5 Amps Mini Fuse
- ATMF14C - In-Line Fuse Holder

Part No. **F-S956** Pkg: Retail Bag

- ST307 - OFF-ON-Momentary ON Switch
- ATM05 - 5 Amps Mini Fuse
- ATMF14C - In-Line Fuse Holder

Part No. **F-S975** Pkg: Retail Bag

- ST100 - ON-OFF Toggle Switch
- ST108 - MomentaryON-OFF Toggle Switch
- ATM075 - 7.5 Amps Mini Fuse
- ATMF14C - In-Line Fuse Holder

Part No. **F-S976** Pkg: Retail Bag

- ST307 - OFF-ON-Momentary ON Switch
- ATM10 - 10 Amps Mini Fuse
- ATMF14C - In-Line Fuse Holder



SWP4300 + 3x ST100 + ST108



ST100



ST108



ST307



ATMF14C



ATM05



ATM075



ATM10

Back-Up Alarms



- Decibel Level: 97db
- Type: SAE Type C
- Amps: < 0.6
- Pkg: Box

Part No. **BU-97**



- Decibel Level: 107db
- Type: SAE Type B
- Amps: < 0.8
- Pkg: Box

Part No. **BU-107**



- Decibel Level: 112db
- Type: SAE Type A
- Amps: < 0.8
- Pkg: Box

Part No. **BU-112**



- Decibel Level: 87 to 112db
(Self Adjusting)
- Type: SAE Type F
- Amps: < 0.8
- Pkg: Box

Part No. **BU-112J**

Grommet Mount Back-Up Alarms



Part No. **BU-R97**

- Decibel Level: 97db
- Type: SAE Type C
- Amps: < 0.6
- Pkg: Box

Part No. **BU-R107**

- Decibel Level: 107db
- Type: SAE Type B
- Amps: < 0.8
- Pkg: Box

Part No. **BU-R102J**

- Decibel Level: 77 to 102db
(Self Adjusting)
- Type: SAE Type A
- Amps: < 0.8
- Pkg: Box

Switches for Grommet Mount Back-Up Alarms



- ON/OFF Switch for Back-Up Alarm
- Mounts adjacent to gear shift lever
- Normally-Off 2.5 Amps inductive @ 14-28V

Pkg: Box

Part No. **BU-W20**



- Multi-Directional Switch for Back-Up Alarm
- Mount adjacent to gear shift lever so that shifting into reverse will move the switch actuator arm sufficiently to make electrical contact

Pkg: Box

Part No. **BU-W30**

Grommets & Mounting Bracket



Part No. **GR4000 (bulk)**
GR4000P (retail bag)



Part No. **MB4000 (bulk)**
MB4000P (retail bag)

Part No.	Page No.	Part No.	Page No.	Part No.	Page No.	Part No.	Page No.
B		E		E-250A	22	E-728AB	2, 20
BU-97	42	E-2110AC	7	E-250AM	22	E-728AW	2, 20
BU-107	42	E-2110ACB	7	E-280AA	11	E-7211AB	2, 8
BU-112	42	E-2110AVM	7	E-280AAM	11	E-7211AW	2, 8
BU-112J	42	E-2115AC	10	E-280AC	11	E-72K35AB	6
BU-R97	42	E-2115ACM	10	E-280ACM	11	E-72K35AW	6
BU-R102J	42	E-2140AC	8	E-280AW	11	E-72K38AB	5
BU-W20	42	E-2140ACM	8	E-280AWM	11	E-72K38AW	5
BU-W30	42	E-2150AM	9	E-2940A	18	E-72K45AB	3
C		E-2160A	13	E-2940AC	18	E-72K45AW	3
C-100A	39	E-2160AC	13	E-2980A	18	E-72K45BR	3
C-250A	39	E-2161A	12	E-2980AC	18	E-72K85AB	5
C-330A	38	E-2161AM	12	E-2990A	18	E-72K85AW	5
C-330AM	38	E-2161AB	12	E-2990AC	18	E-736AB	4, 20
C-330B	38	E-2161ABM	12	E-330A	24	E-736AW	4, 20
C-330BM	38	E-2161AC	12	E-330AM	24	E-7315AB	4, 9
C-450AD	38	E-2161ACM	12	E-330BM	24	E-7315AW	4, 9
C-450BD	38	E-2163A	13	E-330W	24	E-73K36AB	6
C-550A	37	E-2163AC	13	E-332AM	24	E-73K36AW	6
C-550B	37	E-2210A	7	E-336A	24	E-882AC	19
C-553A	37	E-2210AM	7	E-336AM	24	E-888AC	19
C-553B	37	E-2210AC	7	E-350A	23	E-890A	19
C-883AC	36	E-2210ACM	7	E-420AM	35	E-905A	28
C-883BC	36	E-2215A	10	E-438AM	35	E-912A	27
C-R880A	36	E-2215AM	10	E-440AM	35	E-913A	27
C-R880B	36	E-2215AC	10	E-450AD	23	E-913R	27
CB-250	39	E-2215ACM	10	E-450ADM	23	E-913W	27
CB-330	38	E-2220A	14	E-460AM	34	E-915AA	28
CB-450	38	E-2220AM	14	E-480AB	34	E-915AW	28
CB-550	37	E-2220AM-1	14	E-480AM	34	E-915BB	28
CB-553	37	E-2220AC	14	E-480BM	34	E-915BR	28
CB-883	36	E-2220ACM	14	E-530A	25	E-915GG	28
CC-880	36	E-2220ACM-1	14	E-530AM	25	E-915RR	28
CL-250A	39	E-2223AC	15	E-551A	22	E-915WW	28
CL-330A	38	E-2230A	16	E-553A	22	E-916AA	26
CL-330B	38	E-2232AM	15	E-650A	21	E-916AB	26
CL-550A	36 - 38	E-2232ACM	15	E-655A	21	E-916AW	26
CL-550B	36 - 38	E-2232AWM	15	E-658A	23	E-916BB	26
CL-553A	37	E-2243A	16	E-661A	21	E-916BR	26
CL-553B	37	E-2243AC	16	E-725AB	3, 26	E-916GG	26
CL-R880A	36	E-2450A	17	E-725AW	3, 26	E-916RR	26
CL-R880B	36	E-2457A	17	E-725BR	3, 26	E-916WW	26

Part No.	Page No.	Part No.	Page No.	Part No.	Page No.
E-917AA	27	E-F211	7	F-S9805	41
E-920A	31	E-F212	7, 10	F-S9810	41
E-920A-K	31	E-F212M	7, 10	L	
E-920A-KM	31	E-F216	12, 13	LEDH4065-18A	33
E-920CA	31	E-F222	7	LEDH4065-18R	33
E-920CA-K	31	E-F222M	7, 10	LEDM4065-18A	33
E-920CA-KM	31	E-F223	10, 15	LEDM4065-18AC	33
E-920B	31	E-F224	14, 16	LEDM4065-18G	33
E-920B-K	31	E-F2220M	14	LEDM4065-18GC	33
E-920B-KM	31	E-F250	17	LEDM4065-18R	33
E-920R	31	E-F255	16, 17	LEDM4065-18RC	33
E-920R-K	31	E-F281	16	LEDM4065-18W	33
E-920R-KM	31	E-F291-1	18	LEDM4065-18WC	33
E-921A	31	E-F292	18	LEDM4066-18A	33
E-921A-K	31	E-F293	18	LEDM4066-18R	33
E-921A-KM	31	E-F297	18	LEDM4165-18A	33
E-940A	30	E-F298	18	LEDM4165-18AP	33
E-940A-K	30	E-F560	40	LEDM4165-18R	33
E-940A-KM	30	E-F560K	40	LEDM4165-18RP	33
E-940CA	30	E-F600	40		
E-940CA-K	30	E-F680	40		
E-940CA-KM	30	E-F700-2	17		
E-940B	30	E-F951	28		
E-940B-K	30	E-F953	28		
E-940B-KM	30	E-F954	28		
E-940R	30	E-F985-5	32		
E-940R-K	30	E-FM600	40		
E-940R-KM	30	EH-940A	30		
E-950A	29	EH-940CA	30		
E-950B	29	EH-940B	30		
E-950CA	29	EH-940R	30		
E-950CG	29	EHM-940A	30		
E-950CW	29	EHM-940CA	30		
E-950G	29	EHM-940B	30		
E-950R	29	EHM-940R	30		
E-955C	32	F			
E-960A	29	F-S936	41		
E-960A-2K	29	F-S950	41		
E-986CAK	32	F-S955	41		
E-986CWK	32	F-S956	41		
E-F065-8	16, 17	F-S975	41		
E-F200-8	16, 17	F-S976	41		