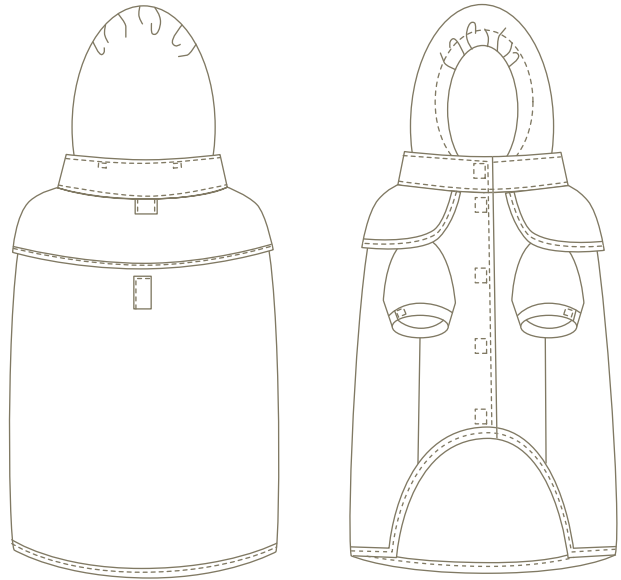


Raincoat

Dog wear pattern recipe: PT005

milla milla

<http://www.millamilla.jp/>



INDEX	01	Material.....	Page.1
	02	Preparation	2
	03	Make Harness hole, harness hole cover, lead hole cover	3
	04	Make cuffs.....	4
	05	Make sleeves.....	4
	06	Make collar	5
	07	Make hood	5
	08	Make cape	7
	09	Sew front and back body	7
	10	Sew sleeves onto body	8
	11	Sew cape onto body	8
	12	Make lead hole	9
	13	Finish front opening.....	9
	14	Sew collar and hood onto body	9
	15	Finish hem	11
	16	Sew velcro	13

01 Material

- ☆ **Fabric:** Waterproof/water repellent woven fabric.(Nylon fabric etc)
- ☆ **Velcro:** 2cm width × about 20cm length
- ☆ **Elastic band:** 5mm width
- ☆ **Binding tape:** Make from the fabric or purchase from shops(Teflon coating)
3 S • S S • S (about 1m) M • L • D S • D M • F B (about 1.5m) 2 L • 3 L (about 2m)
- ☆ **Interlining:** small amount
- ☆ **Needle:** size 10/70 or 11/75 for lightweight fabrics,
12/80 for medium weight fabrics and 12/80 or 14/90 for heavyweight fabrics.
- ☆ **Thread:** Use an all purpose thread, polyester or cotton wrapped polyester.

出来上がりサイズ

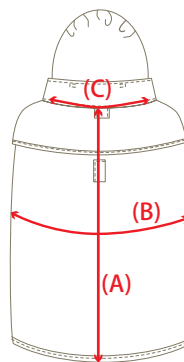
	Back length (A)	Chest circumference (B)	Neck circumference (C)	Front length (D)	Rough standard weight (kg)
3 S	21.5	35	22	17.5	1.5~2
S S	25.5	39	25	21.5	~3
S	27.5	44	29.5	23	~4
M	32.5	51	35	25.5	~6
L	38	58	41	28	~8
2 L	42.5	64	47	30.5	~12
3 L	50	70	53	32	~15
D S	36	44	29.5	23	3~4
D M	40	53	35	28	~6
F B	32	63	43.5	26	around 11kg

Necessary quantity

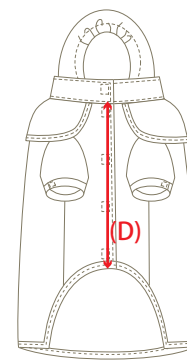
	Fabric (110×A)	Elastic band	Binding tape
3 S	110×50	17	59.5
S S	110×65	18	78
S	110×65	22	96
M	110×70	26	113
L	110×115	28	133
2 L	110×120	36	156
3 L	110×125	40	175
D S	110×65	22	116.5
D M	110×75	26	127
F B	110×95	32	134

(Unit: cm)

Back



Front



* Note


The "necessary quantity" should be measured placing patterns without considering top and bottom. If the fabric has direction, please place the pattern and measure the length of the fabric you need before you buy.

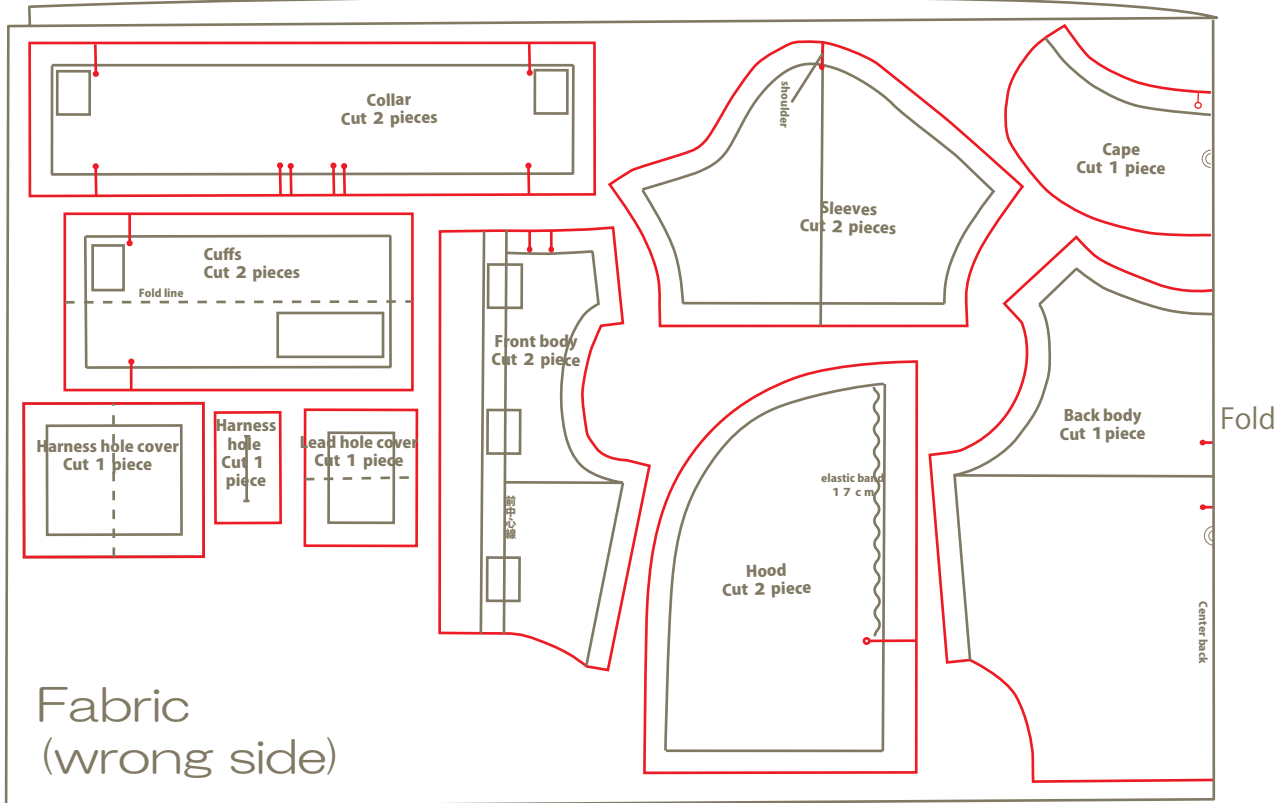
* The left table is written as 110 x A (see diagram on right)

* The quantity should have been calculated with 110cm width this time. But the width of the fabric varies. Please prepare some extra amount to avoid the shortage of the fabric.

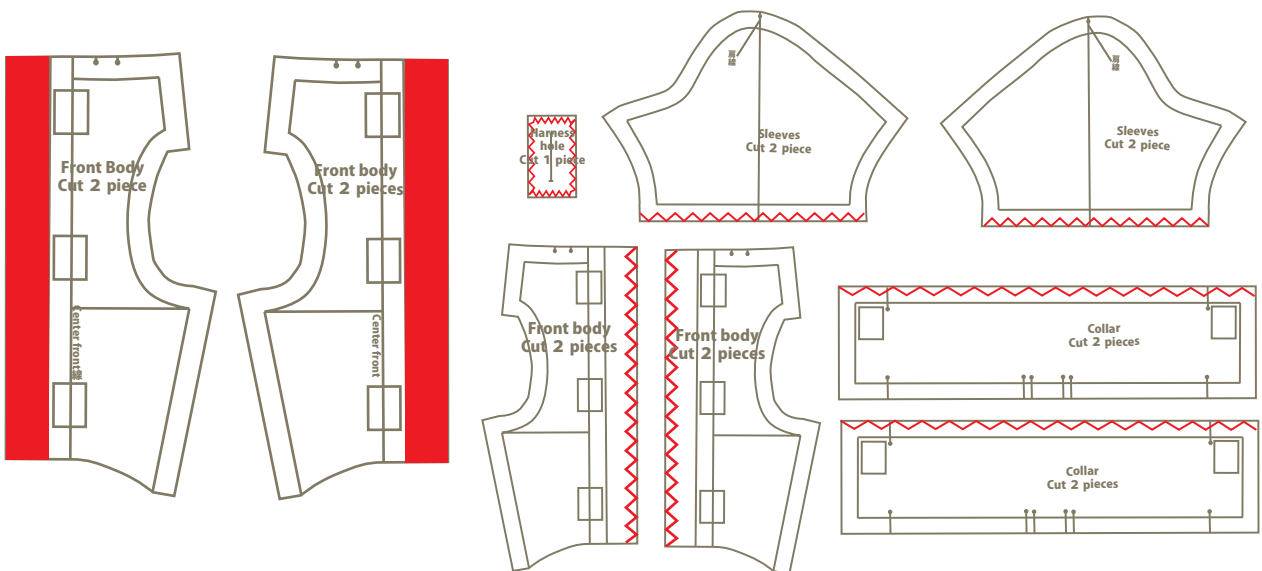


02 Preparation

- ① Cut out the pattern, calculate how much fabric you will need.
* The pattern contains seam allowances.(basically 1cm / 0.4 inch)
- ② Prepare fabric, if needed, please wash the fabric.
- ③ Place the pattern and cut out the fabric carefully (red line).
- ④ Make binding tape (please see "How to make binding tape out of fabric" if you decide to making out of fabric.)
- ⑤ Cut about 3mm notch at this mark 



※When making coat, cut all parts except hood.

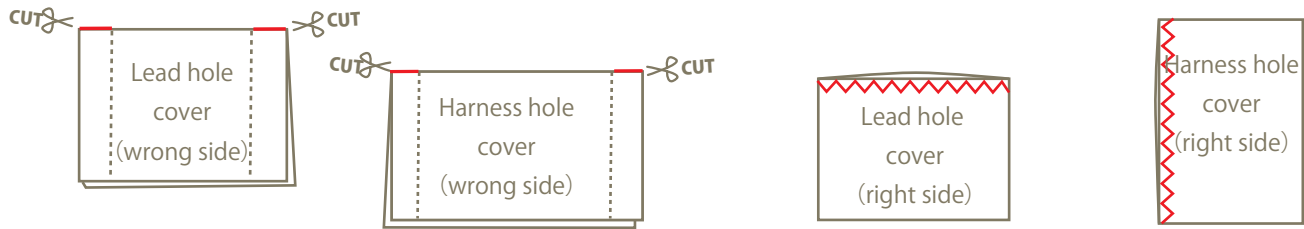


- ⑥ Iron stick the lining on front body (red part)

- ⑦ Zig-zag /inter lock as shown above.

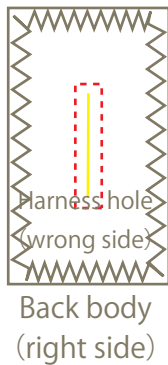
03 Make harness hole, harness hole cover, lead hole cover.

※Attach harness hole and lead hole as you like. If you don't need those, please go to step 4.



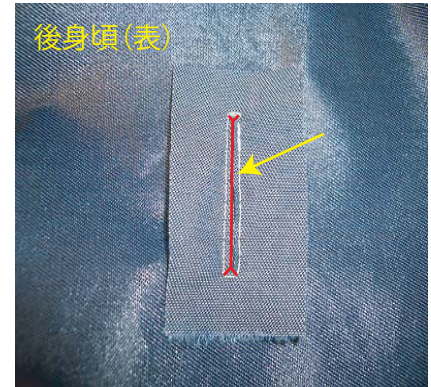
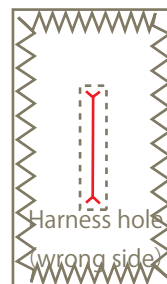
① Fold harness hole cover and lead hole cover in half. Sew both end with 1cm seam allowance. To make it flat after turn over to the right side out, cut the seam as shown above.

② Turn harness hole cover and lead hole cover right side out and zig-zag/inter lock the opening.



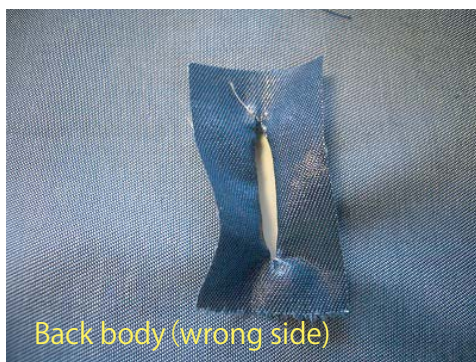
POINT

Stitch around Harness hole (yellow line).



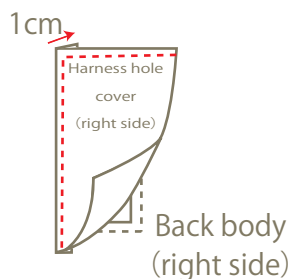
③ Place harness hole piece on back body (right side in) and stitch from right side of the body.

④ Cut the red line to make hole. Be careful not to cut the stitches.



⑤ Flip the harness hole piece to the back body wrong side through the hole you made at step ④. Iron to keep the shape.

⑥ Edge stitch around the hole.



⑦ Fold one end of (the end with zig-zag stitch) harness hole cover by 1cm and place on back body to cover the hole. Edge stitch as shown above.

⑧ Complete the harness hole!