

Apron skirt

Dog wear pattern recipe:PT069

milla milla

<https://www.millamilla.net/>



MOVIE Movie manual

A movie version of the recipe is available at the address below.

<https://movie.millamilla.jp/pt069-apron-skiert/?lang=en>

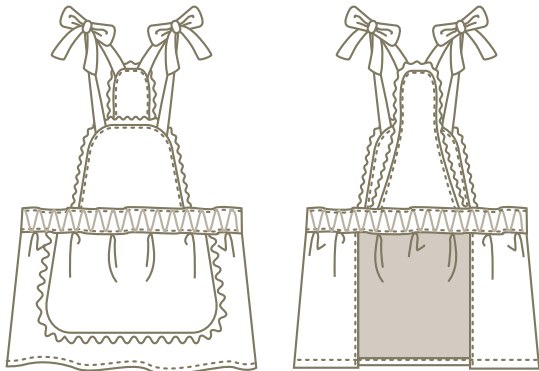
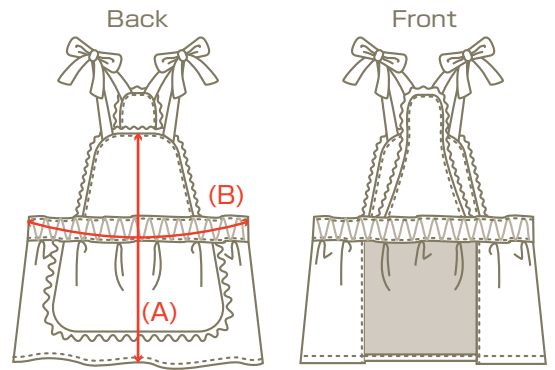


INDEX

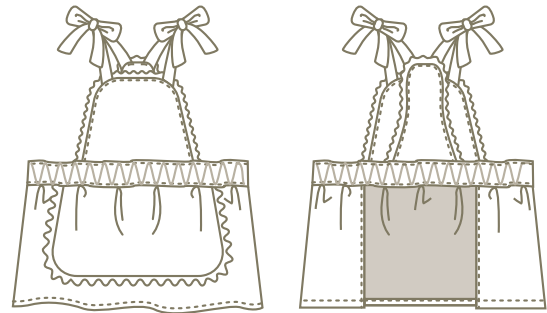
01	Materials	Page 1
02	Preparations	2
03	Procedure	3

01 Materials

- ☆ Outer fabric: cotton (for skirt)
- ☆ Another fabric: cotton
(breastplate, backplate, apron, belt)
- ☆ Elastic Lace A: (for shoulder strap)
- ☆ Lace Trim B:
(decoration for breastplate, backplate, apron)
- ☆ Elastic: flat-type elastic (for waist elastic)
- ☆ Thread: Spun yarn



Long: SS(L)~2L(L), DS/DM size



Short: L(S) ~3L(S), FB-S~FB-L size

Finished size

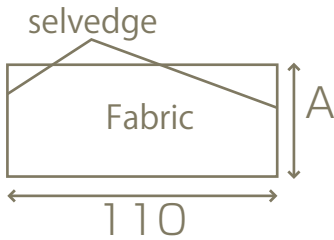
Fabric requirements

	Back length (A)	Chest (B)	Rough standard (kg)	Outer fabric	Another fabric	Lace A (L×W)	Lace B (L)	Elastic (L×W)
3S	15	26	1.5~2	15	18	106×2	84.5	28×1.5
SS	17	30	~3	16.5	21	109×2	97.6	32×1.5
SS(L)	19.5	30	~3	16.5	23	109×2	105.2	32×1.5
S	20	34	~4	18	24	112×2	111.3	36×1.5
S(L)	24.5	34	~4	20	26	112×2	121.2	36×1.5
M	22.5	39	~6	20	26	120×2.5	123.7	41×2
M(L)	29.5	39	~6	22	30	120×2.5	141	41×2
L	24.5	44	~8	22	28	130×2.5	138.2	46×2
L(L)	31.5	44	~8	25	32	130×2.5	155.3	46×2
L(S)	24.5	44	~8	22	28	130×2.5	122.6	46×2
2L	28.5	50	~12	24.5	35	137×2.5	163	52×2
2L(L)	35.5	50	~12	27	40	137×2.5	180	52×2
2L(S)	28.5	50	~12	24.5	27.5	137×2.5	143.4	52×2
3L	32.5	55	~15	27	40	146×3	182.3	57×2.5
3L(S)	32.5	55	~15	27	36	146×3	164	57×2.5
4L	40.5	64	~25	33	53	148×3	214.5	66×3.5
5L	48.5	73	~35	38	70	153×3	251.1	75×3.5
6L	58	81	~50	40	75	159×4	287.1	83×3.5
7L	67	90	~60	48	116	164×5	316.2	92×4.5
8L	71	98	~80	51.5	125	170×6	339.3	100×4.5

(A, B Unit: cm)

02 Preparations

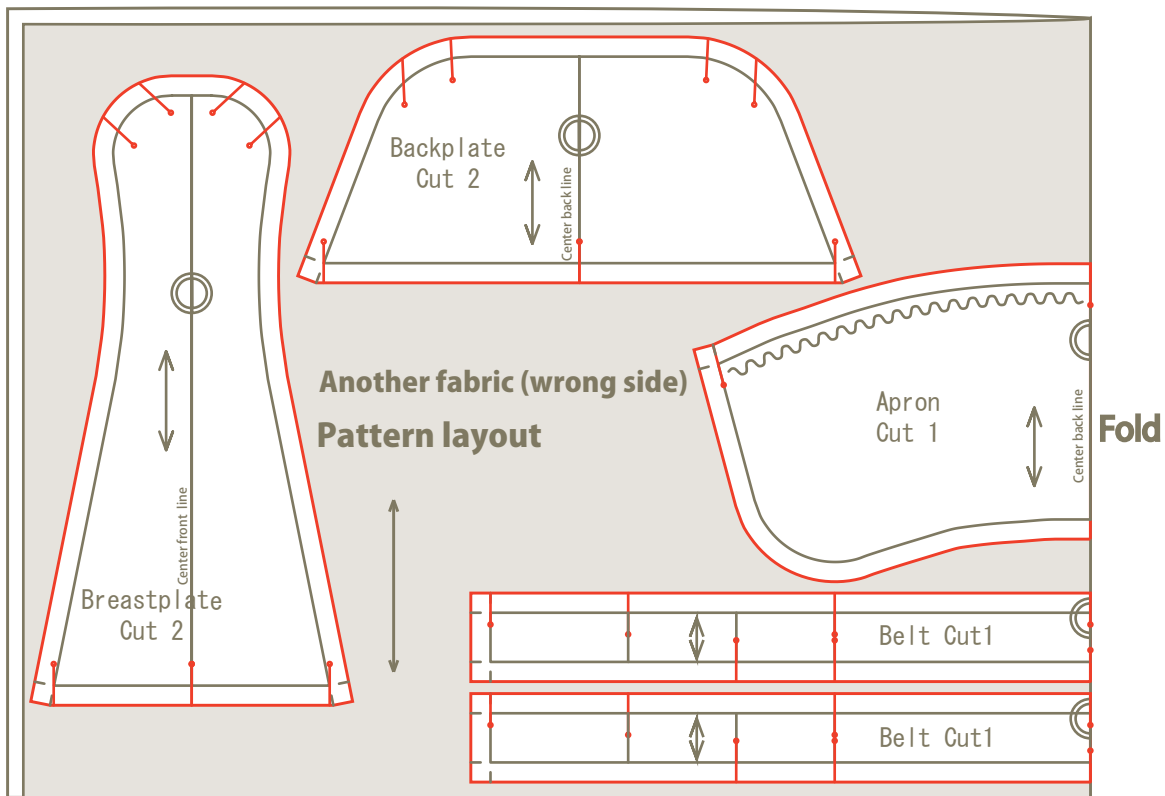
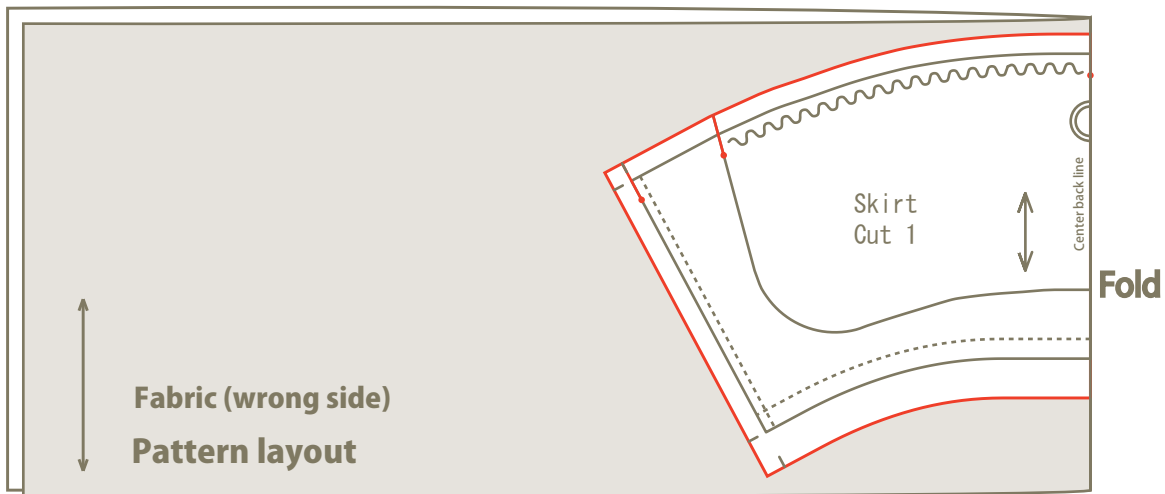
- ① Cut out the pattern. Calculate the required size. The pattern includes seam allowance.
- ② Purchase fabric. If necessary, wash the fabric and iron for preshrinking.
- ③ Place the pattern and cut out the fabric along the red line. Make notches at the marked positions ♀ (clip about 3mm).



※Note:

Note: The necessary size is indicated in the left figure (110cm × A). Make sure you have enough fabric, as the fabric size may differ.

※Please see “The first Before you start sewing” booklet for the basic sewing guide.

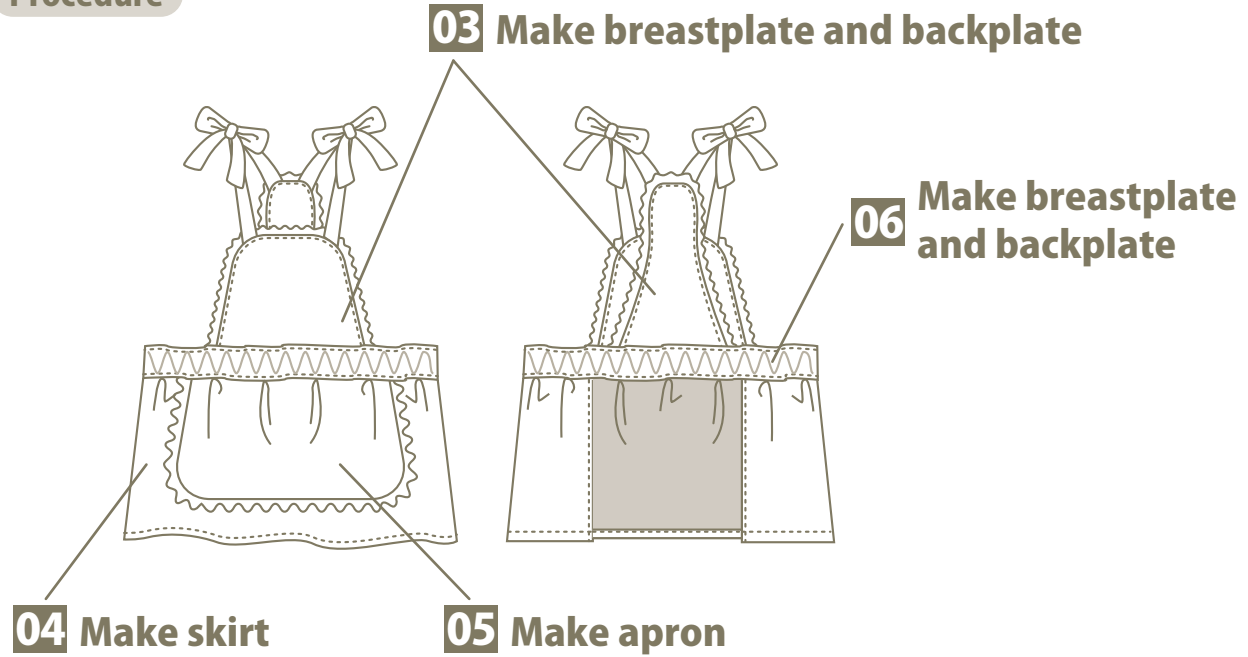


For DS/DM size: Use the SS~2L-sized Long pattern

For FB-S~FB-L size: Use the L~3L-sized Short pattern

Please note that the grainline is different from the diagram for the size 7L and 8L belt.

Procedure



Movie instruction is available on YouTube.



03 Make breastplate and backplate

Fabric requirements of breastplate frill

3S	33	M	50.5	2L	68.2	4L	88.8
SS	39.4	M(L)	56.6	2L(L)	74.1	5L	100.8
SS(L)	43.3	L	55.2	2L(S)	48.6	6L	111.8
S	46.5	L(L)	61	3L	79.8	7L	122.7
S(L)	50.4	L(S)	39.6	3L(S)	61.5	8L	130.2

(Incl. seam allowance Unit: cm)

Fabric requirements of backplate frill

3S	22.5	M	32.3	2L	40.8	4L	53.3
SS	25.6	M(L)	39.6	2L(L)	48.3	5L	63.8
SS(L)	28.3	L	35.9	2L(S)	40.8	6L	78.8
S	28.3	L(L)	43.5	3L	44.5	7L	83.4
S(L)	32	L(S)	35.9	3L(S)	44.5	8L	91.9

(Incl. seam allowance Unit: cm)

Fabric requirements of shoulder strap (for breastplate)

3S	25×2本 (2)	M	27×2本 (2.5)	2L	31×2本 (2.5)	4L	32.5×2本 (3)
SS	25.5×2本 (2)	M(L)	27×2本 (2.5)	2L(L)	31×2本 (2.5)	5L	33×2本 (3)
SS(L)	25.5×2本 (2)	L	30×2本 (2.5)	2L(S)	31×2本 (2.5)	6L	35×2本 (4)
S	26×2本 (2)	L(L)	30×2本 (2.5)	3L	32×2本 (3)	7L	36×2本 (5)
S(L)	26×2本 (2)	L(S)	30×2本 (2.5)	3L(S)	32×2本 (3)	8L	37×2本 (6)

Length×No. (Width)
(Incl. seam allowance Unit: cm)

Fabric requirements of shoulder strap (for backplate)

3S	28×2本 (2)	M	33×2本 (2.5)	2L	37.5×2本 (2.5)	4L	41.5×2本 (3)
SS	29×2本 (2)	M(L)	33×2本 (2.5)	2L(L)	37.5×2本 (2.5)	5L	43.5×2本 (3)
SS(L)	29×2本 (2)	L	35×2本 (2.5)	2L(S)	37.5×2本 (2.5)	6L	44.5×2本 (4)
S	30×2本 (2)	L(L)	35×2本 (2.5)	3L	41×2本 (3)	7L	46×2本 (5)
S(L)	30×2本 (2)	L(S)	35×2本 (2.5)	3L(S)	41×2本 (3)	8L	48×2本 (6)

Length×No. (Width)
(Incl. seam allowance Unit: cm)

05 Make apron

Fabric requirements of apron frill

3S	29	M	40.9	2L	54	4L	72.4
SS	32.6	M(L)	44.8	2L(L)	57.6	5L	86.5
SS(L)	33.6	L	47.1	2L(S)	54	6L	96.5
S	36.5	L(L)	50.8	3L	58	7L	110.1
S(L)	38.8	L(S)	47.1	3L(S)	58	8L	117.2

(Incl. seam allowance Unit: cm)