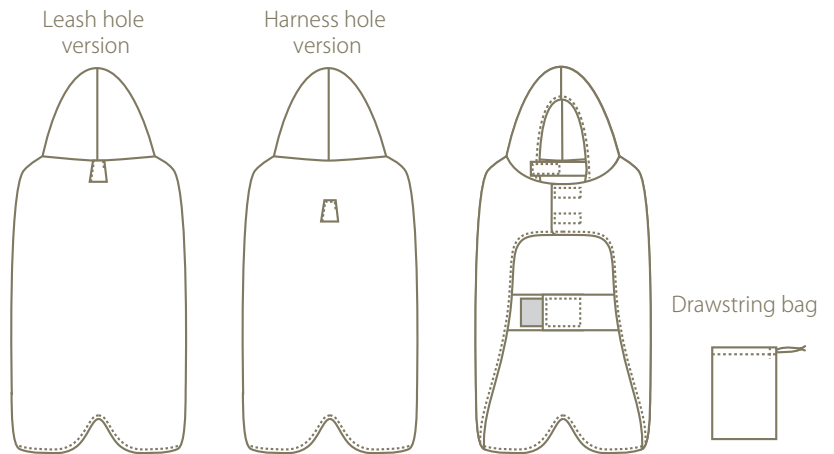


# Over Rain Coat

Dog wear pattern recipe : PT056

milla milla

<https://www.millamilla.net/>



**MOVIE** **Movie manual**

We prepared the how to make Over Rain Coat by video.  
Please access from the following site and watch.  
We recommend watching by the broadband environment.

<https://movie.millamilla.jp/pt056/?lang=en>

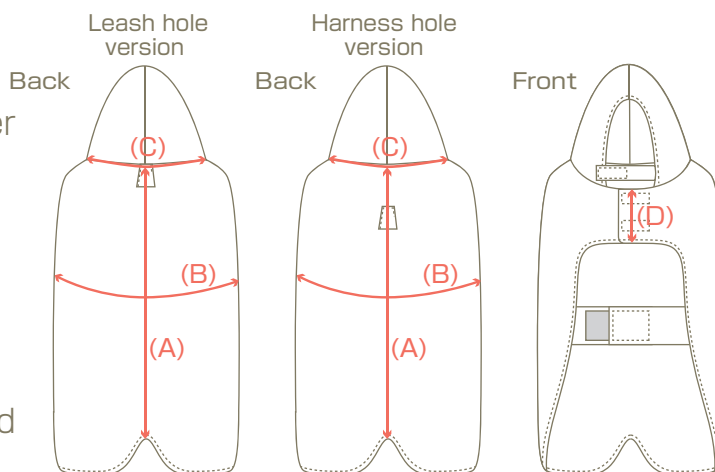
User Name : PT056  
Password : XXXXXXXXXX

## INDEX

<b>01</b>	<b>Materials</b> . . . . .	<b>Page 1</b>
<b>02</b>	<b>Preparation</b> . . . . .	<b>1</b>
<b>03</b>	<b>Making hood tab</b> . . . . .	<b>4</b>
<b>04</b>	<b>Making Chest belt</b> . . . . .	<b>4</b>
<b>05</b>	<b>Making hole covering tab</b> . . . . .	<b>5</b>
<b>06</b>	<b>Making hood</b> . . . . .	<b>5</b>
<b>07</b>	<b>Attaching Chest belt</b> . . . . .	<b>7</b>
<b>08</b>	<b>Stitching bodice</b> . . . . .	<b>7</b>
<b>09</b>	<b>Attaching hood to the bodice</b> . . . . .	<b>8</b>
<b>10</b>	<b>Attaching velcro</b> . . . . .	<b>9</b>
<b>11</b>	<b>Making leash hole / Harness hole</b> . . . . .	<b>9</b>
<b>12</b>	<b>Making Drawstring bag</b> . . . . .	<b>11</b>

# 01 Materials

- ☆ Outer material: waterproof / water repellent fabric (eg., nylon taffeta or nylon ox)
- ☆ Lining: Cupro or Cuprammonium Rayon
- ☆ Velcro fastener (hooks) (loops)
- ☆ Cord: for Drawstring bag
- ☆ Thread: spun yarn #60 (upper and bobbin thread)



## Finished size

## Necessary quantity

	Back Length (A)	Chest (B)	Neck (C)	Rough standard weight (kg)	Outer	Lining	Cord
3S	23	31.5	24	1.5 ~ 2	122x40	122x40	33
SS	27	39	28	~ 3	122x50	122x50	33
S	29	47	33	~ 4	122x55	122x55	33
M	34	55	36.5	~ 6	122x65	122x65	39
L	39	58	42.5	~ 8	122x70	122x70	39
2L	43	66	47.5	~ 12	122x80	122x75	39
3L	48	72	54	~ 15	122x95	122x85	45
4L	65	87	55.5	~ 25	122x130	122x110	45
5L	70	101	62	~ 35	122x165	122x120	45
6L	75	112	70	~ 50	122x200	122x135	51
7L	85	122	77	~ 60	122x200	122x155	51
8L	90	132	83.5	~ 80	122x235	122x160	51
DS	35	44	31.5	3 ~ 4	122x60	122x60	39
DM	39	53	37	~ 6	122x65	122x65	39
FB-S	29	55	43.5	~ 8	122x60	122x60	39
FB-M	35	61	45.5	~ 12	122x65	122x65	39
FB-L	41	67	51.5	~ 15	122x75	122x75	39

Indicated size contains extra allowance since the woven fabric is used. (A,B,C, Unit cm)

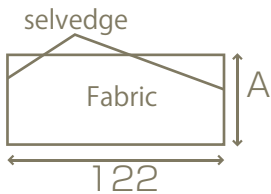
## Necessary quantity Velcro (width x length)

for Hood tab (hooks)				for Hood tab (loops)				for Chest belt (hooks/loops)			
3S	1.6x1.6	6L	5x5	3S	1.6x3	6L	5x10	3S	2.5x5 (2sets)	6L	5x9 (5sets)
SS	1.6x1.6	7L	5x5	SS	1.6x3	7L	5x10	SS	2.5x5 (3sets)	7L	5x9 (5sets)
S	2x2	8L	5x5	S	2x4	8L	5x10	S	2.5x5 (3sets)	8L	5x9 (5sets)
M	2x2	DS	1.6x1.6	M	2x4	DS	1.6x3	M	3x6 (3sets)	DS	2.5x5 (2sets)
L	2.5x2.5	DM	1.6x1.6	L	2.5x4.5	DM	1.6x3	L	3.8x6 (3sets)	DM	2.5x5 (2sets)
2L	2.5x2.5	FB-S	2.5x2.5	2L	2.5x4.5	FB-S	2.5x6	2L	3.8x6 (3sets)	FB-S	3.8x6 (3sets)
3L	3x3	FB-M	2.5x2.5	3L	3x6	FB-M	2.5x6	3L	5x8 (3sets)	FB-M	3.8x6 (3sets)
4L	3.8x3	FB-L	2.5x2.5	4L	3.8x6	FB-L	2.5x6	4L	5x8 (3sets)	FB-L	3.8x6 (3sets)
5L	3.8x3			5L	3.8x6			5L	5x8 (3sets)		

## 02 Preparation

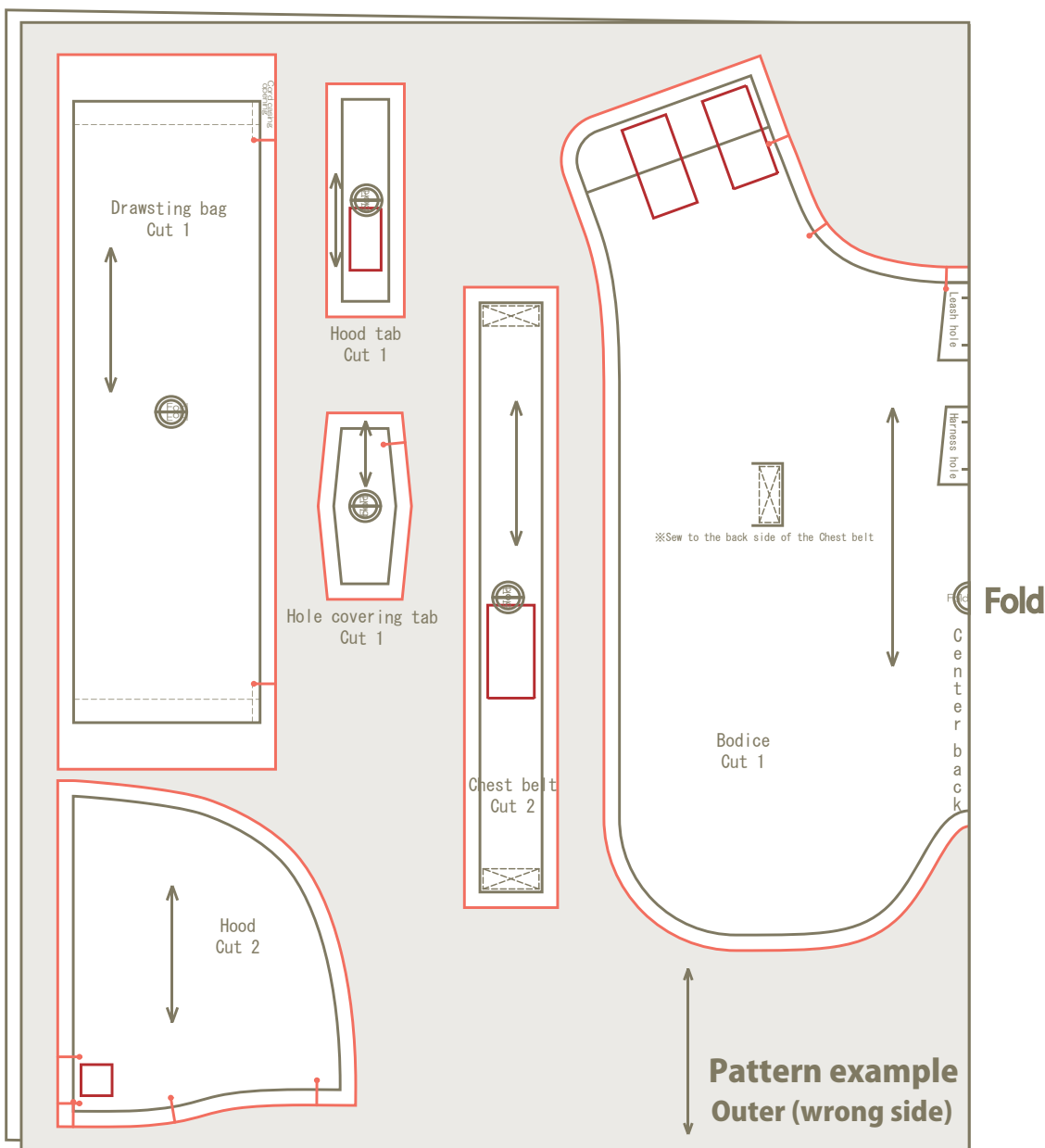
※Choose either the leash or harness hole.

- ① Cut out the pattern and calculate how much fabric you need.  
The pattern involves 1 cm seam allowances.
- ② Prepare the fabric. Wash the fabric if needed.
- ③ Place the pattern and cut out the fabric carefully (red line).  
Make notch ♪ (cut about 3mm)



※Note

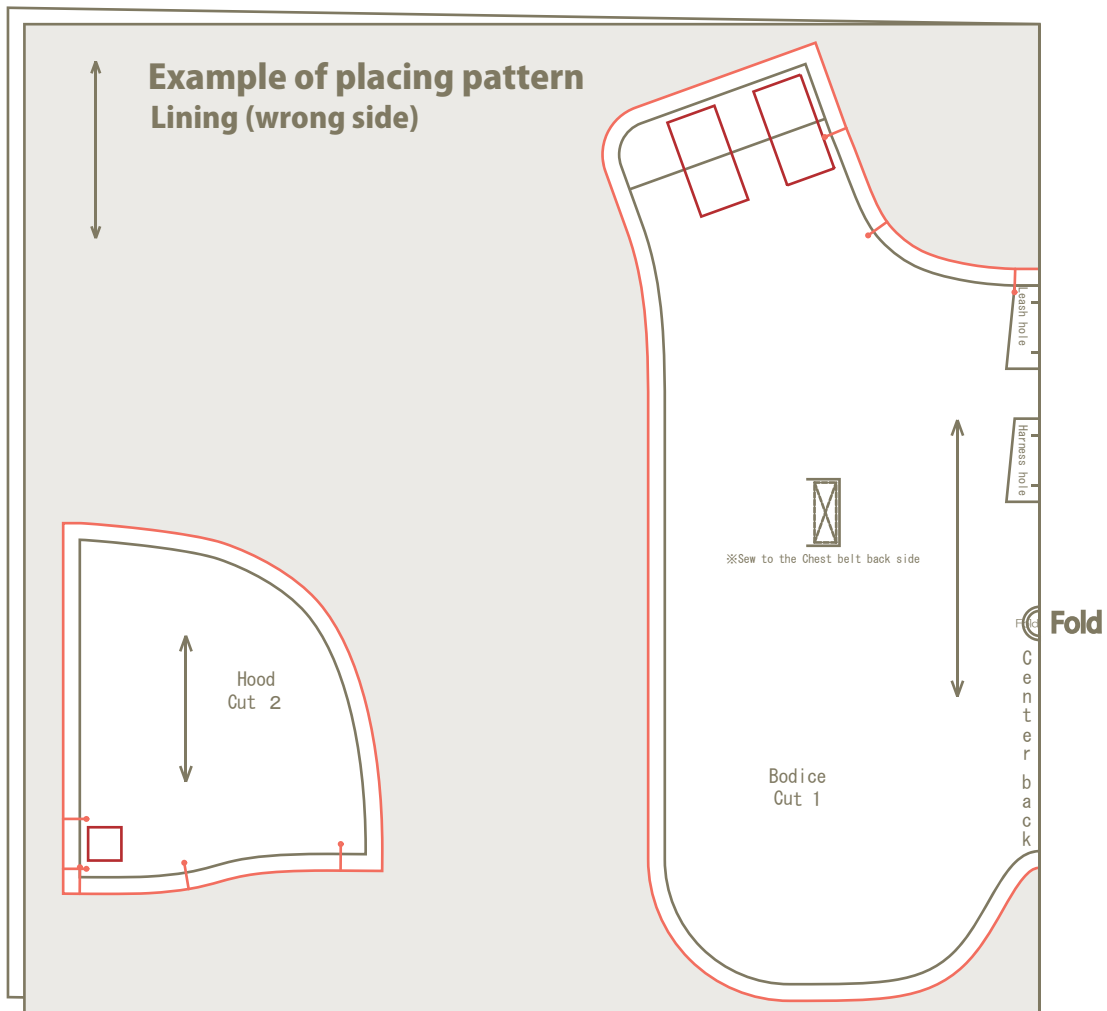
The "necessary quantity" is measured by placing patterns without considering the top and bottom.  
If the fabric has direction, place the pattern and measure the fabric length you need before buying.  
The table is indicated as A×122 cm.



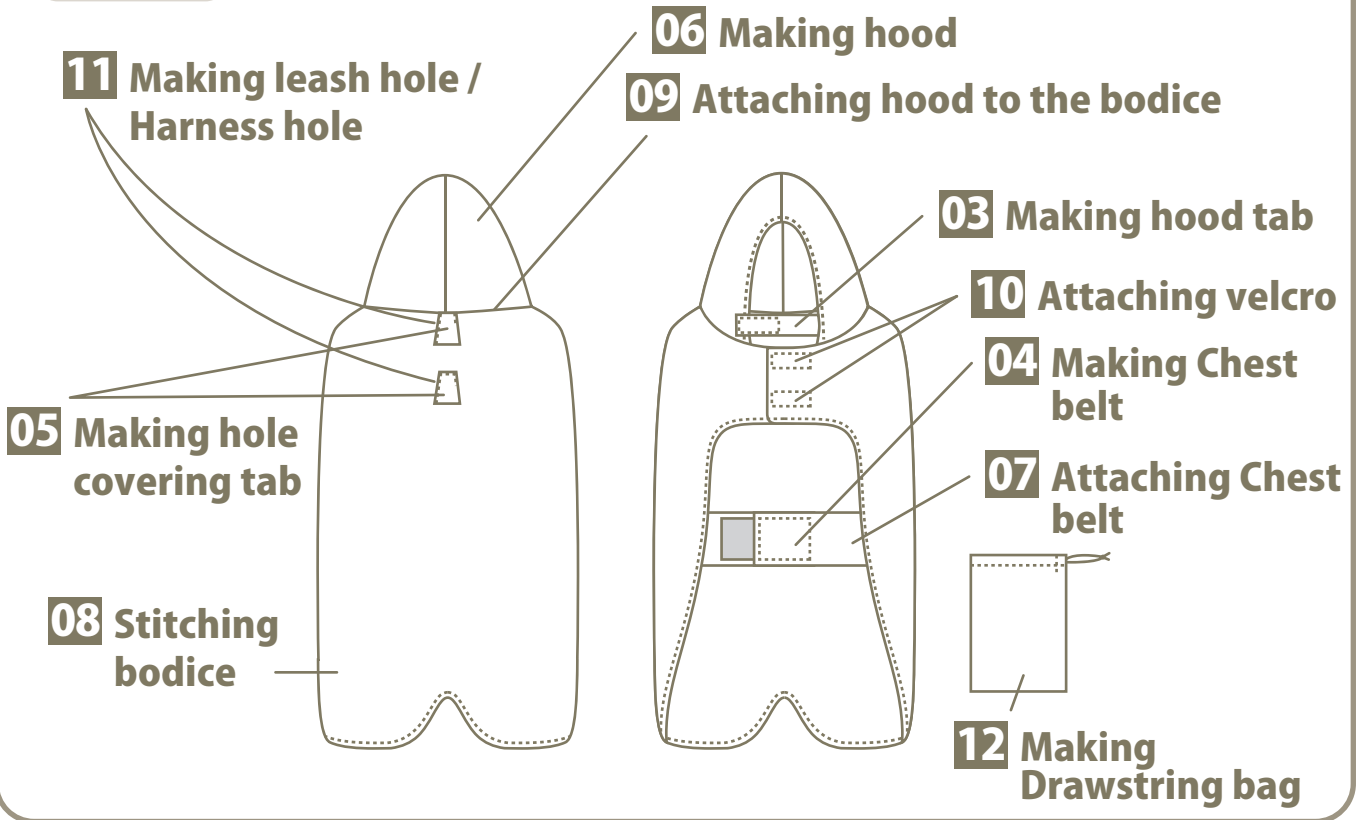
□: red rectangles indicate velcro position    ⊠: stitching position

※Please see "The first Before you start sewing" booklet for the basic sewing guide.

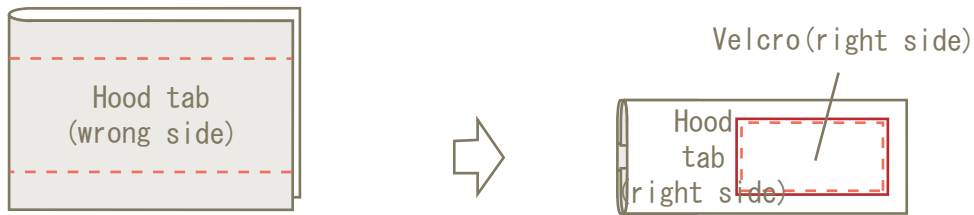




**Procedure**



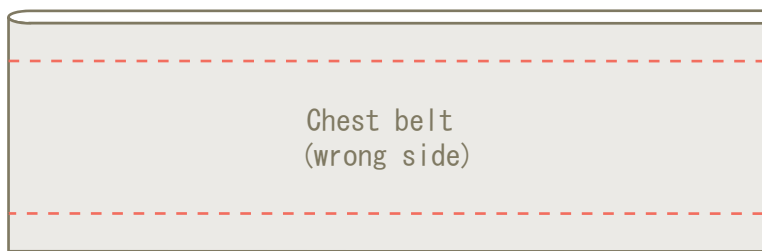
### 03 Making hood tab



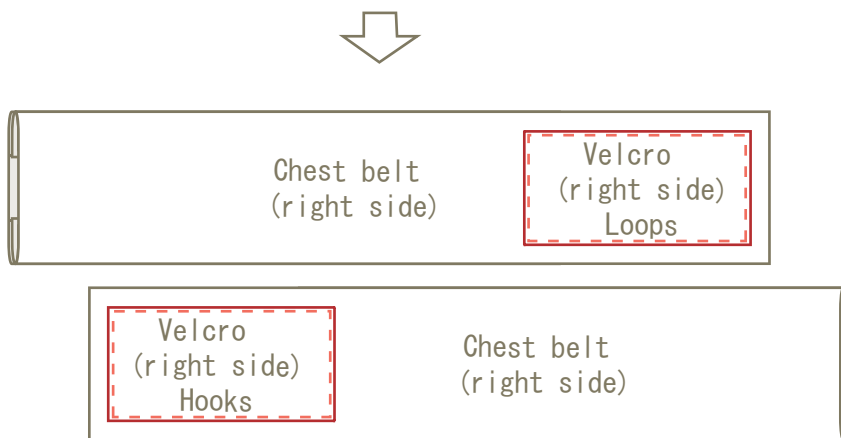
① Fold the hood tab so that the right side faces inside. Stitch top and bottom with a 1 cm seam allowance.

② Turn the tab ① inside out and stitch velcro (loops).

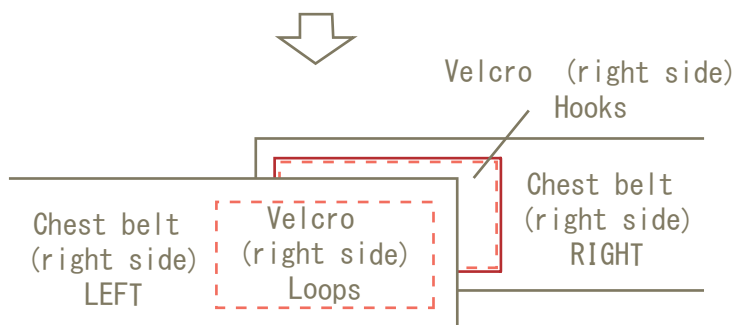
### 04 Making Chest belt



① Fold the Chest belts with right side facing each other and stitch top and bottom with a 1 cm seam allowance.



② Turn the tabs ① inside out and stitch velcro.



Adjust left and right tabs as shown above.