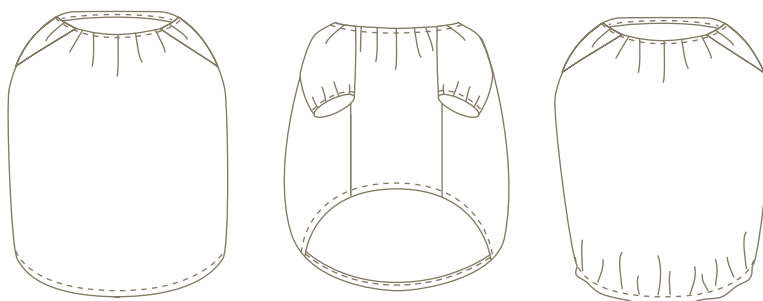


Smock/Tunic

Dog wear pattern recipe:PT018

milla milla

<http://www.millamilla.net/>



MOVIE Manual

We prepared the how to make the coverall by video.
Please access from the following site and watch.
We recommend watching by the broadband environment.

<http://www.millamilla.net/movie/pt018/> User Name:PT018 Password:

INDEX	01	Material	Page.1
	02	Preparation	2
	03	Sew front & back body	2
	04	Fold hem	3
	05	Make sleeves	3
	06	Sew sleeve on body	4
	07	Sew hem	5
	08	Bias-bound finish the neck	5
	09	Attaching elastic	6
	10	Attach elstic on hem	6

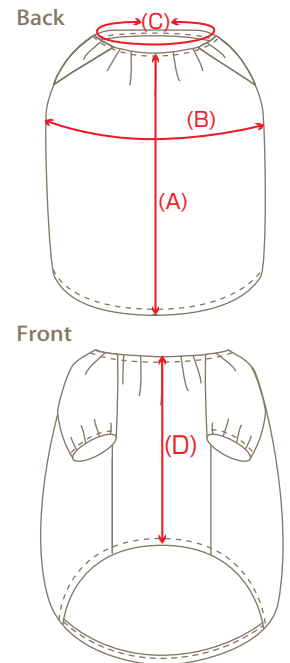
01 Material

- ☆ **Fabric:** Cotton fabric
- ☆ **Elastic band:** 6 mm width elastic band
- ☆ **Bias tape**
- ☆ **Thread:** Use an all purpose thread, polyester or cotton wrapped polyester.

Finished size

	Back Length (A)	Chest (B)	Neck (C)	Front length (D)	Rough standard weight (kg)
3S	17.5	47	19	13.5	1.5~2
SS	21.5	53	23	18.5	~3
S	23.5	60	26.5	20	~4
M	28.5	69	31	25	~6
L	33.5	77	36	25	~8
2L	37.5	85	42	27.5	~12
3L	44	92	47	29	~15
DS	31	58	27	20	3~4
DM	34	69	31	25	~6
FB	28	78	38.5	24	around 11kg

(Unit: cm)



Necessary quantity

	Fabric	Bias tape	Smock elastic band	Tunic elastic band
3S	90×25	30.5	43	69
SS	90×30	37	49	78.5
S	90×45	48	54.5	86.5
M	90×60	52	63	97
L	90×65	58.5	70	114
2L	90×80	64	80	127.5
3L	90×90	69.5	87	142
DS	90×50	43	55.5	91
DM	90×70	52	68	107.5
FB	90×70	55	72.5	111

(Unit: cm)

* Note

The "necessary quantity" is measured placing patterns without considering the top and bottom.

If the fabric has direction, please place the pattern and measure the length of the fabric you need before you buy.

* The table is written as A x 90cm (see diagram on right)




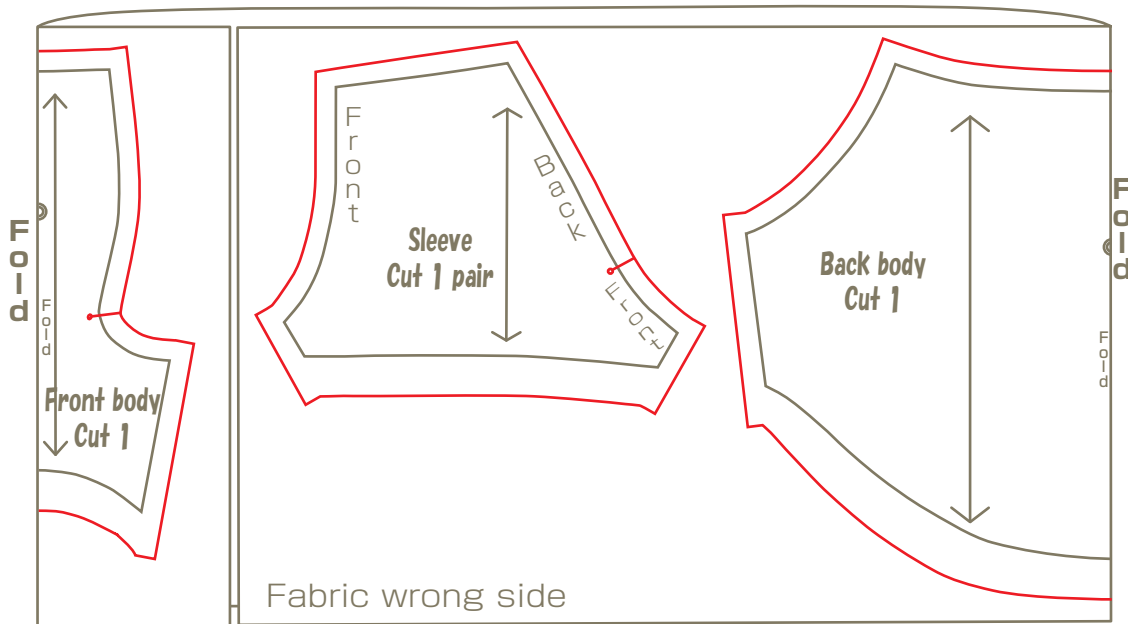
* Purchase some extra fabric, because most cotton shrink to some degree.

Wash the fabric in the same manner you intend to use for the finished garment.

This will preshrink the fabric and remove the surface finish which will make it easier to sew.

02 Preparation

- ① Cut out the pattern, calculate how much fabric you need.
* The pattern involve 1 cm seam allowances.
- ② Prepare fabric, if needed, please wash the fabric.
- ③ Place the pattern and cut out the fabric carefully (red line).
Make notch  (cut about 3mm)



03 Sew front & back body

