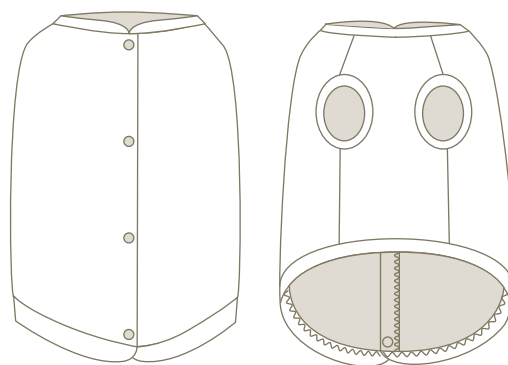


Open back Vest

Dog wear pattern recipe: PT053

milla milla

<https://www.millamilla.net/>



MOVIE Movie manual

We prepared the how to make Open back Vest by video. Please access from the following site and watch. We recommend watching by the broadband environment.

<https://movie.millamilla.jp/pt053/?lang=en>

User Name: PT053

Password:

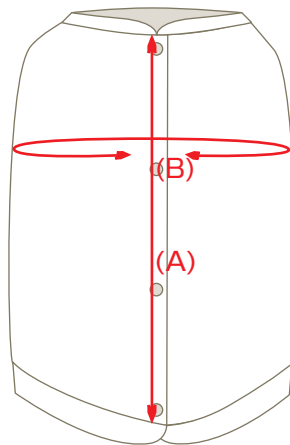


INDEX

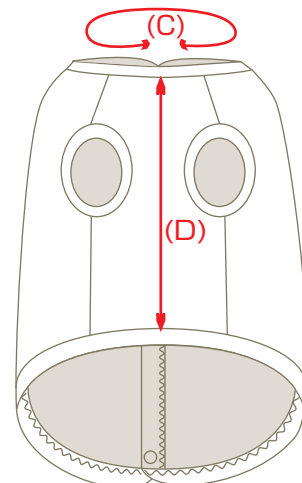
- 01** | Finished Size Page 1
- 02** | Preparation 1
- 03** | Applying fusible interfacing . . . 3
- 04** | Sew sides together 3
- 05** | Sew shoulders together 4
- 06** | Making ribs 4
- 07** | Attach ribs 5
- 08** | Put buttons 6

01 Finished Size

Back



Front




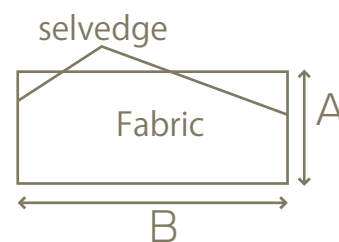
Finished Size

	Back length (A)	Chest (B)	Neck(C)	Front(D)	Rough standard (kg)
3S	18	31	16	12.5	1.5~2
SS	22	35	19	16	~3
S	24	40	22	18	~4
M	29	47	26	21.5	~6
L	32.5	53	30	25.5	~8
2L	38.5	59	35	32	~12
3L	45	64	37	38	~15
4L	55.5	75	39	43.5	~25
5L	65	85	42.5	49.5	~35
6L	69	95	46.5	54.5	~50
7L	75	105	50.5	60	~60
8L	83	115	53	67	~80
DS	29	40	22	22.5	3~4
DM	31.5	49	26	25	~6
FB-S	25	48	30	22	~8
FB-M	28	52	35	27	~12
FB-L	34.5	56	39	27	~15

(Unit: cm)

02 Preparation

- ① Cut out the pattern sheet. Calculate the required size. The pattern paper includes a 1 cm seam allowance.
- ② Purchase fabric. For woven fabric, if necessary, wash the fabric and press with iron for preshrinking.
- ③ Place the pattern and cut out the fabric along the red line. Make notches at the marked positions  (clip about 3mm).

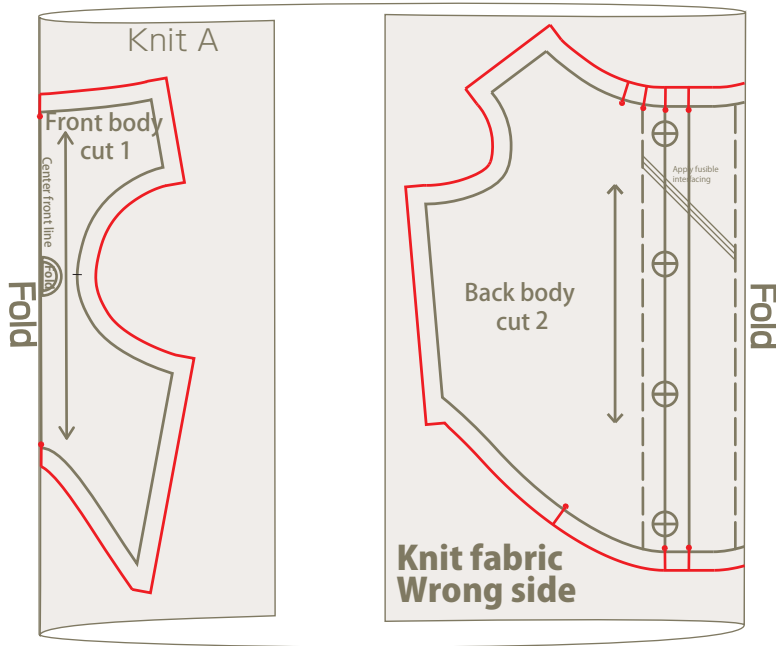


※Note The required fabric size is shown as A × B (left) Make sure the fabric is large enough to fit the measurements.



※Please see “The first Before you start sewing” booklet for the basic sewing guide.

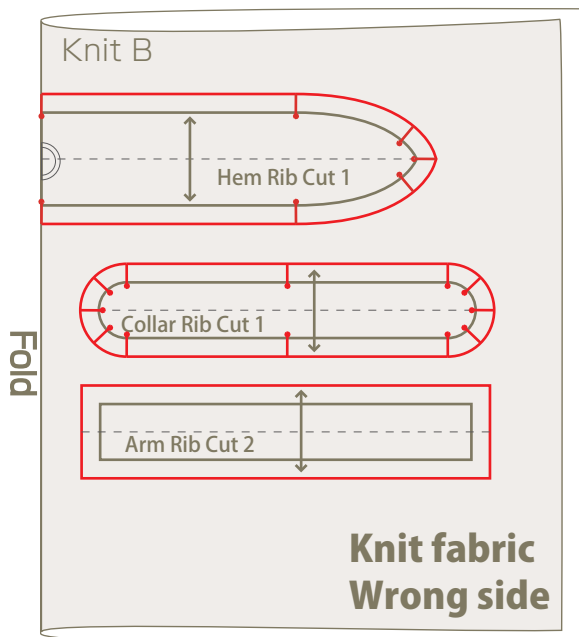
Patten layout



Materials

- ☆Fabric A:(T-shirt knit)/front and back body .
- ☆Fabric B:(Rib knit fabric)/neck, arm ribs, hem.
- ☆thread:sewing thread for knit("regiron" or polyester thread)/the upper thread woolly yarn/the bobbin thread.

※When using an overlocker, use four pieces of all-purpose thread.



Necessary quantity

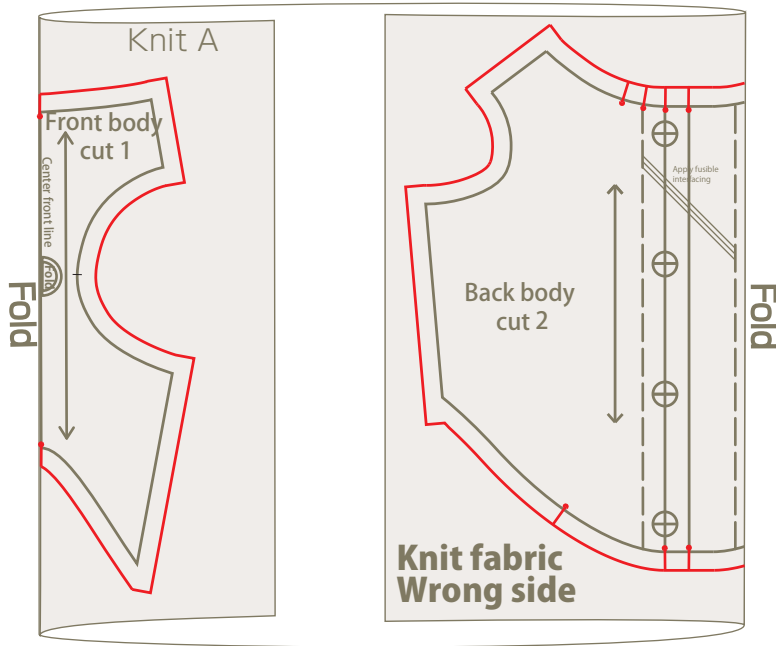
	Fabric A A×B	Fabric B A×B
3S	35×110	30×110
SS	35×110	30×110
S	45×110	35×110
M	45×110	40×110
L	50×110	40×110
2L	55×110	40×110
3L	65×110	50×110
4L	70×110	60×110
5L	100×110	60×110
6L	110×110	65×110
7L	170×110	110×110
8L	200×110	130×110
DS	45×110	40×110
DM	45×110	40×110
FB-S	40×110	35×110
FB-M	45×110	40×110
FB-L	50×110	40×110

(Unit: cm)

※Cut one ribbed collar.

※Sew two ribbed hems to make a single hem for 6L, 7L and 8L.

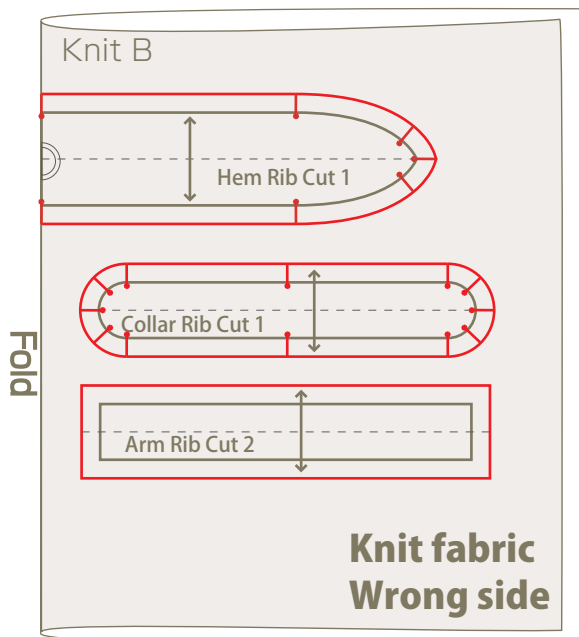
Patten layout



Materials

- ☆Fabric A:(T-shirt knit)/front and back body .
- ☆Fabric B:(Rib knit fabric)/neck, arm ribs, hem.
- ☆thread:sewing thread for knit("regiron" or polyester thread)/the upper thread woolly yarn/the bobbin thread.

※When using an overlocker, use four pieces of all-purpose thread.



Necessary quantity

	Fabric A A×B	Fabric B A×B
3S	35×110	30×110
SS	35×110	30×110
S	45×110	35×110
M	45×110	40×110
L	50×110	40×110
2L	55×110	40×110
3L	65×110	50×110
4L	70×110	60×110
5L	100×110	60×110
6L	110×110	65×110
7L	170×110	110×110
8L	200×110	130×110
DS	45×110	40×110
DM	45×110	40×110
FB-S	40×110	35×110
FB-M	45×110	40×110
FB-L	50×110	40×110

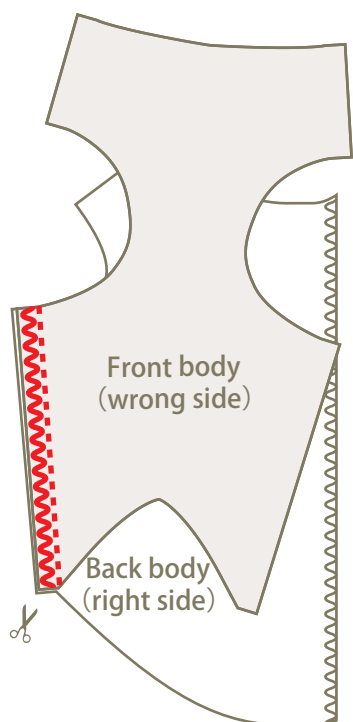
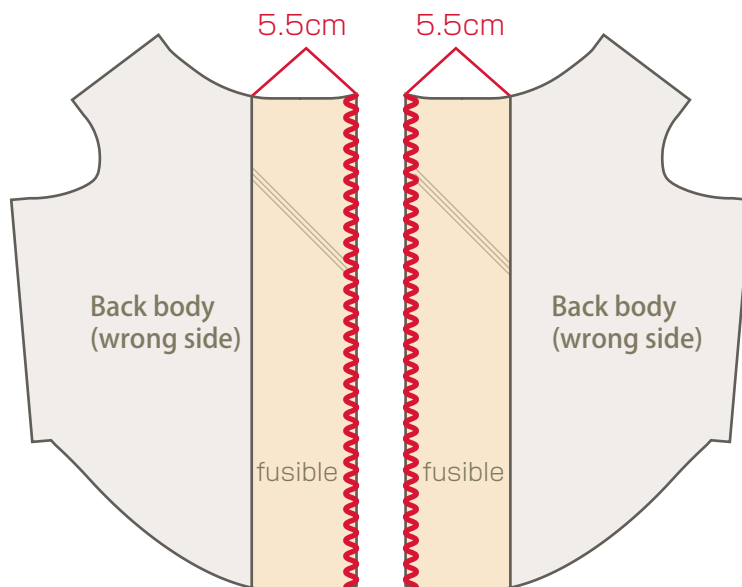
(Unit: cm)

※Cut one ribbed collar.

※Sew two ribbed hems to make a single hem for 6L, 7L and 8L.

03 Applying fusible interfacing

- ① Cut out two pieces of 5.5cm-wide fusible interfacing that match the back body length.
- ② Apply the fusible interfacings to the wrong side of back body. Remove excess facing.
- ③ Zig zag stitch at the edge of the facings.



04 Stitching sides together

- ① Overlay the sides of the front and back body with the right sides facing each other. Sew with a 1cm seam allowance and zig zag stitch along the straight stitch line. Cut off the excess allowance.
- ② Do the same for the other side.
- ③ Fold the allowance toward the front body side.