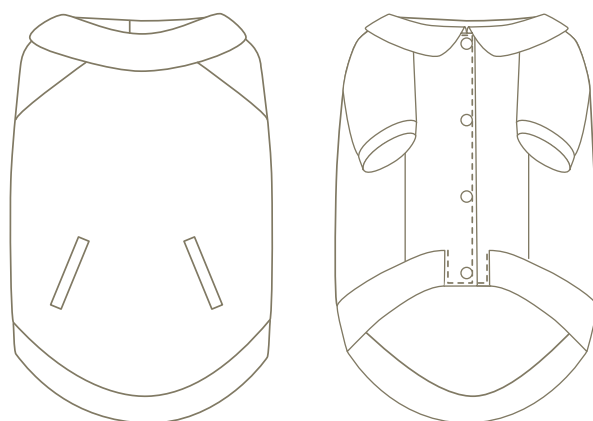


# Blouson

Dog wear pattern recipe : PT025

## milla milla

<http://www.millamilla.net/>



### MOVIE Manual

We prepared the how to make the blouson by video.  
Please access from the following site and watch.  
We recommend watching by the broadband environment.

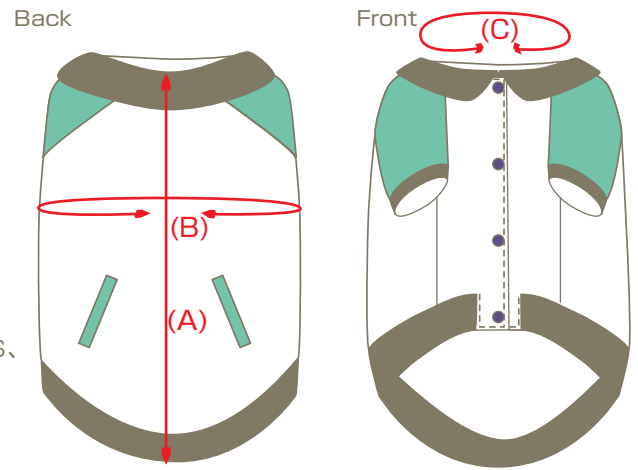
<http://movie.millamilla.jp/PT025/>

User Name : PT025 Password :

目次	01	Material . . . . .	Page 1
	02	Preparation . . . . .	1
	03	Sew fake pocket . . . . .	2
	04	Make sleeves . . . . .	2
	05	Sew side seam . . . . .	3
	06	Sew sleeves . . . . .	3
	07	Make collar . . . . .	4
	08	Sew collar . . . . .	4
	09	Sew hem rib . . . . .	5
	10	Attach buttons . . . . .	6

## 01 Material

- ☆ Fabric 1: Woven fabric(normal thickness)  
(Front and back body/white)
- ☆ Fabric 2: Woven fabric(normal thickness)  
(sleeves/green)
- ☆ Fabric 3: Knit fabric(ribs and collar/brown)
- ☆ Snap button: 11mm(3S, SS, S, M, DS, DM,  
FB are 4 sets, L, 2L are 5 sets,  
3L, 4L, 5L are 6 sets, 6L, 7L are 7 sets,  
8L is 8 sets)
- ☆ Thread: Use and all purpose thread, polyester  
or cotton wrapped polyester.




### Finished size

### Necessary quantity

	Back Length (A)	Chest (B)	Neck (C)	Rough standard weight (kg)	Fabric 1 A x B	Fabric 2 A x B	Fabric 2 A x B
3S	22	35	21.5	1.5~2	25X90	20X90	20X105
SS	24.5	39.5	27	~3	30X90	20X90	20X105
S	26	44	30	~4	30X90	25X90	20X105
M	31.5	51	36	~6	35X90	30X90	20X105
L	35.5	58	42	~8	40X90	30X90	25X105
2L	42.5	64	47.5	~12	50X90	40X90	35X105
3L	46	70	52.5	~15	75X90	40X90	45X105
4L	56.5	81	60	~25	95X90	45X90	45X105
5L	72	95	70	~30	110X90	50X90	45X105
6L	75.5	103	78	~35	140X90	55X105	55X105
7L	85	114	86	~40	150X90	60X105	60X105
8L	94.5	125	94	~45	180X90	60X120	65X120
DS	34	44	30	3~4	35X90	25X90	20X105
DM	37	53	36	~6	40X90	25X90	20X105
FB	31	63	40	around 11kg	35X90	30X90	20X105

(Unit: cm)

## 02 Preparation

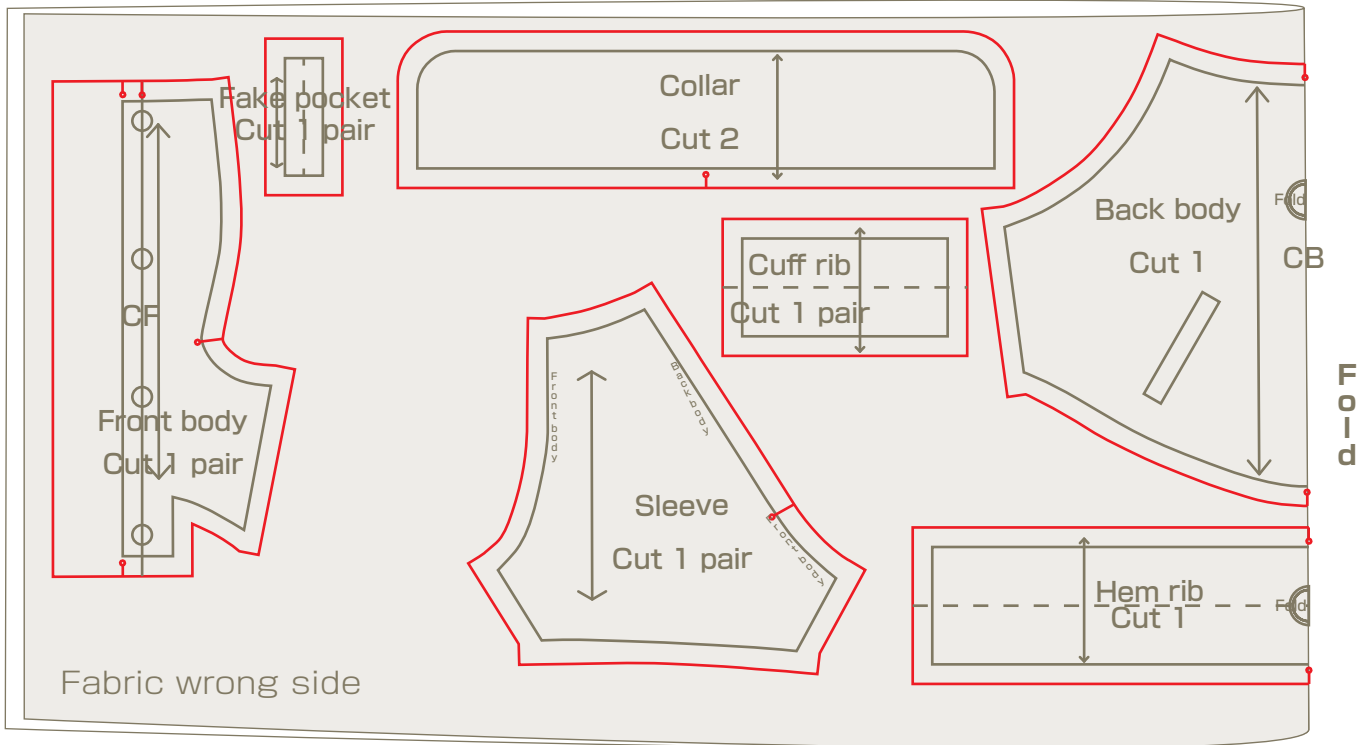
- ① Cut out the pattern, calculate how much fabric you need.  
\* The pattern involve 1cm seam allowances.
- ② Prepare fabric, if needed, please wash the fabric.
- ③ Place the pattern and cut out the fabric carefully (red line).  
Make notch  (cut about 3mm)



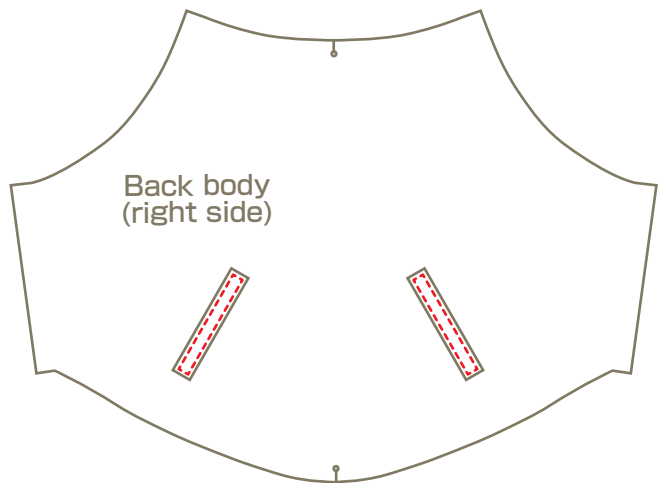
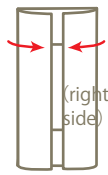
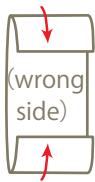
\* Note

The "necessary quantity" is measured placing patterns without considering the top and bottom.  
If the fabric has direction, please place the pattern and measure the length of the fabric you need before you buy.

\* The table is written as A x B (see diagram on left)



### 03 Sew fake pocket

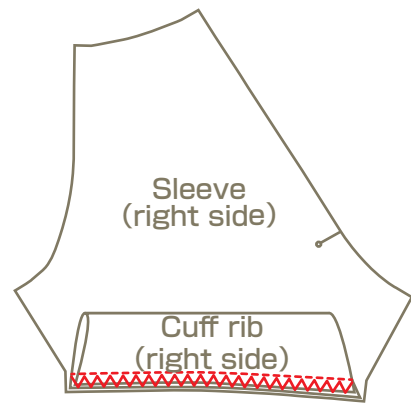
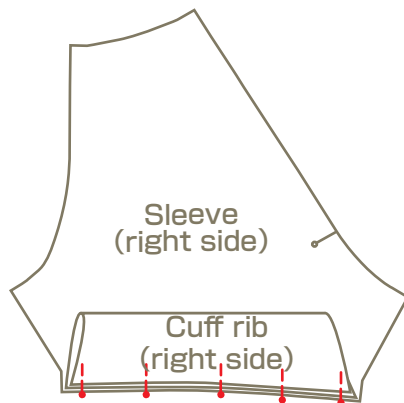


① Fold both end of fake pocket by 1 cm and iron.

② Fold the other end by 1 cm and iron. Make 2.

③ Place the fake pocket on back body (see pattern) and top stitch around the pocket.

### 04 Make sleeves



① Fold cuff rib right side out.

② Place cuff rib on sleeve hem and pin together. (cuff rib is made shorter than sleeve hem, so pull the cuff rib evenly)

③ Sew with 1cm seam and zig-zag stitch at the seam.