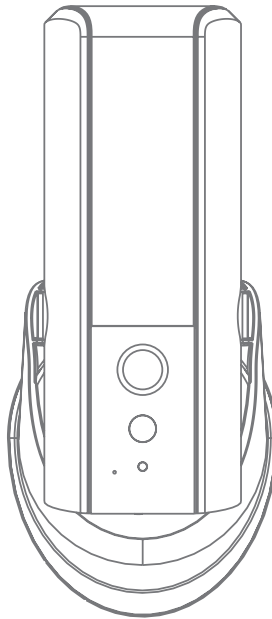


Wireless Lighting Camera

Installation and Operating Instructions

Model: LCA230

Version 1.1



PLEASE READ THESE INSTRUCTIONS CAREFULLY BEFORE USING THIS PRODUCT
AND KEEP THIS MANUAL FOR FUTURE REFERENCE.

CONTENTS

OVERVIEW	2
Please Read Before You Start	3
Wireless Device Operating Range	3
Important Safety Precautions	3
KIT CONTENT	5
SAFETY AND INSTALLATION TIPS	6
PRODUCT OVERVIEW	7
INSTALL YOUR DEIVCE	8
ETHERNET CONNECTION (OPTIONAL)	8
CAMERA SETUP INSTRUCTION	9
APP DOWNLOAD AND INSTALL	12
APP SETUP	12
Wired Setup	12
Wireless Setup	14
Home Page / Device List	16
PIN Lock	17
Live View	18
Edit Setting	19
Basic Setting	20
Advance Setting	21
E-mail Setting	26
Video Setting	27
Sensitivity Setting	28
Push Notify Settings	30
Lighting Auto Mode	30
SD Cad Settings	31
About Device	32
Event	33
Play Back	35
TROUBLE SHOOTING	36
PRODUCTION SPECIFICATION	38
STORAGE MEDIA MANAGEMENT	39

OVERVIEW

The outdoor camera which is equipped with powerful LED light illuminates. The light can be switched on manually in the app or set to switch on when motion is detected. You can also control the camera via the app remotely from anywhere.

- * Make sure the camera is operating with sufficient internet bandwidth, **1Mbps (upload/download speed) is suggested.**
- * For best performance, **the smart-mobile device(s) need to be on Wi-Fi or 4G mobile network** in order to receive maximum download speed.
- * **When the internet transmission is low**, the app will automatically switch to Relay Mode:
 - By adjusting to "Better Streaming" in the system setting section may improve the APP performance.
- * **Your internet bandwidth is limited.** For best performance, to avoid more than two users connecting to the camera simultaneously.
- * Make sure your smart-mobile device(s) is equipped with up-to-date technology, **1.5GHz dual core processor or equivalent is suggested.**
- * **If the signal strength of your Wi-Fi router is weak**, there are several ways to improve transmission:
 - Change router/camera relative position to receive better signal.
 - Use wire Ethernet cable on the camera to establish connection between the camera and your router.
 - Use Wi-Fi repeater/extender to maximize the service range of your Wi-Fi route.
 - Switch your router to 11b/11g mode in order to improve router service range.
- * Please make sure the memory card used is **CLASS10** rated.

PLEASE READ BEFORE YOU START

Always use discretion when installing CCTV equipment, especially when there is perceived policy. Enquire relevant local regulations applicable to the lawful installation of video recording/surveillance. Third party consent may be required.

WIRELESS DEVICES OPERATING RANGE

Ensure the signal reception viewed from the wireless camera(s) is the best possible reception between the camera(s) and the Wi-Fi router. If necessary, reduce the distance between the camera(s) and the Wi-Fi router to improve overall system performance. Wireless Color Camera Recordable CCTV Kit operating on a secure digital 2.4GHz frequency which could greatly reduce interference from product such as wireless routers, cordless phones or microwave ovens.

IMPORTANT SAFETY PRECAUTIONS

Damages caused by non-compliance with this operating manual will void the warranty! We will not assume any liability for damages to items or persons caused by improper handling or non-compliance with the safety notices! Any warranty claim will be null and void in such cases.

1. Do not drop, puncture or disassemble the camera; otherwise the warranty will be voided.
2. Avoid all contact with water, and dry hands before using.
3. Never tug on the power cords. Use the plug to unplug it from the wall outlet.
4. Do not expose the camera to high temperature or leave it in direct sunlight. Doing so may damage the camera or cause camera temporary malfunction.
5. Use the devices with care. Avoid pressing hard on the camera body.
6. For your own safety, avoid using the camera or power off the camera when there is a storm or lightning.
7. Remove the power adapter during long periods between usages.
8. Use only the accessories and power adapters supplied by the manufacturer.
9. To meet the regulations pertaining to parental responsibility, keep the devices out of the reach of infants.
10. Check power cables, do not get crushed or damaged by sharp edges whenever the devices are in operation.





FCC Compliance Statement: This device complies with Part 15 of the FCC rules. Operation is subjected to the following two conditions: (1) this device may not cause harmful interference, and (2) this device must accept any interference received, including interference that may cause undesired operation.



Products with CE Marking comply with EMC Directive (2004/108/EC); Low Voltage Directive (2006/95/EC); RED(2014/53/EU); ROHS Directive (2011/65/EU) issued by the Commission of the European Community. Compliance with these directives implies conformity to the following European Norms:
EMC: EN 301 489
LVD: EN 60950
Radio: EN 300 328

FCC/CE WARNING

This equipment has been tested and found to comply with limits for a Class B digital device, pursuant to Part 15 of the FCC rules and ETSI(EN) 300328. These limits are designed to provide reasonable protection against harmful interference in residential installations. This equipment generates, uses, and can radiate radio frequency energy, and if not installed and used in accordance with the instructions, may cause harmful interference to radio communications. However, there is no guarantee that interference will not occur in a particular installation. If this equipment does interference to radio or television equipment reception, which can be determined by turning the equipment off and on, the user is encouraged to try to correct the interference by one or more of the following measures:

- Reorient or relocate the receiving antenna.
- Move the equipment away from the receiver.
- Plug the equipment into an outlet on a circuit different from that to which the receiver is connected.
- Consult the dealer or an experienced radio/television technician for additional suggestions.

You are cautioned that any change or modifications to the equipment not expressly approved by the party responsible for compliance could void your authority to operate such equipment.

DISPOSAL

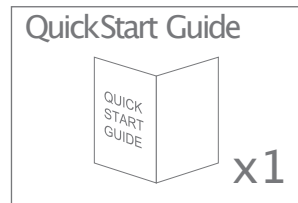
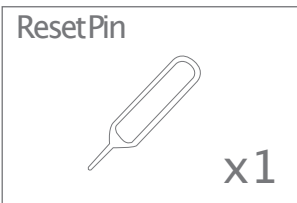
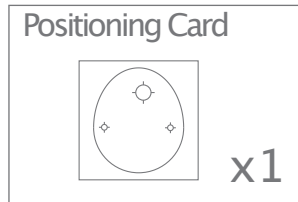
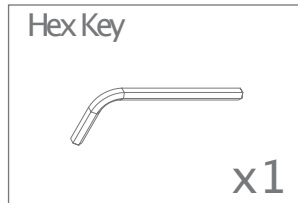
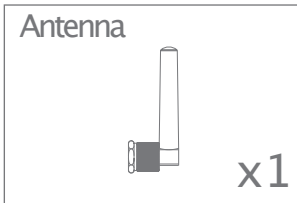
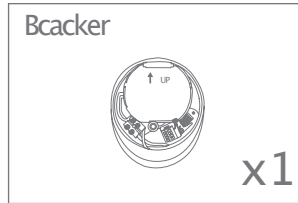
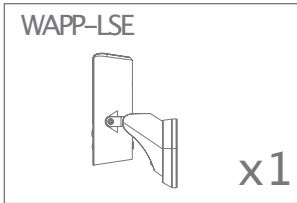
If the camera system no longer functions or can no longer be repaired, it must be disposed of according to the valid statutory regulations.



Disposal of spent batteries/accumulators:

You are required by law (Battery Ordinance) to return all spent batteries and accumulators. Disposing of spent batteries/accumulators with common household waste is prohibited! Batteries/accumulators that contain hazardous substances are marked with the symbols on the side. These symbols indicate that it is prohibited to dispose of these batteries/accumulators in the household waste. The abbreviations for the respective heavy metals are: Cd=cadmium, Hg=mercury, Pb=lead. You can return spent batteries and accumulators that can no longer be charged to the designated collection points in your community, outlets or wherever batteries or accumulators are sold. Following these instructions will allow you to fulfill the legal requirements and contribute to the protection of our environment!

KIT CONTENT



Tools Required: (not included)

- Electric drill
- 5mm masonry drill bit
- 15mm masonry drill bit
- No. 2 Philips screwdriver
- Level (recommended tool)

For best system performance:

iOS: iPhone6 / iPad2 / Mini iPad with iOS 10.0 or above.

Android: 1.5G dual core processor dual core processor with 1G RAM or above.

Storage: Class 10 memory card.

Bandwidth: 1Mbps or above upload/download speed suggested.

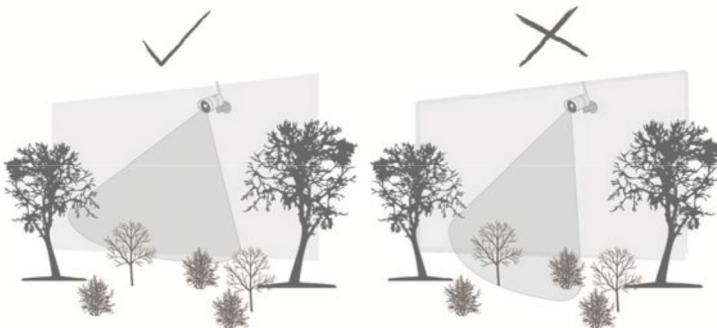
SAFETY AND INSTALLATION TIPS

Do not attempt to open the units with the power adaptor plug connected to avoid any risk of personal injury.

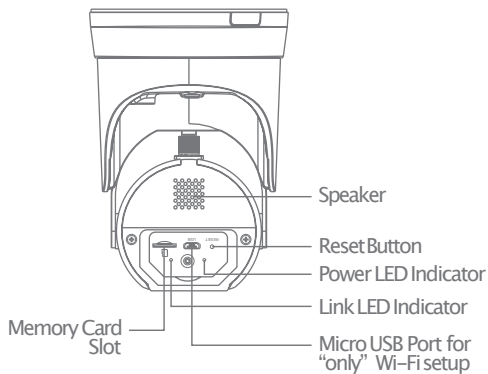
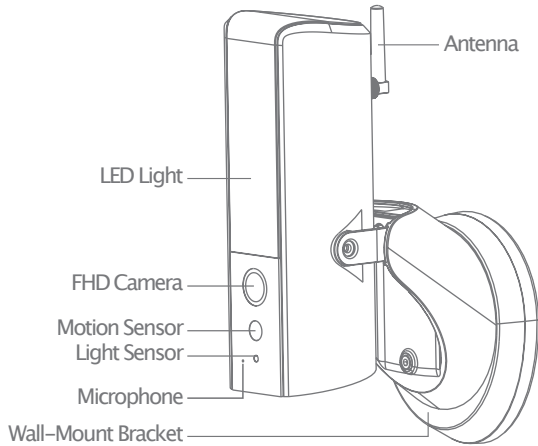
When installing CCTV camera(s), always follow manufacturer's advice when using power tools, steps, ladders, etc. and wear suitable protective equipment (e.g. safety goggles) when drilling holes. Before drilling holes through walls, check for hidden electricity cables and water pipes. The use of cable/pipe detector is advisable.

To avoid exposing any cameras to extreme weather conditions (e.g., under a gutter which is prone to any water leaks). When installing any cameras with this unit, to use cable conduit to protect any video/power extension cables from being exposed externally and to prevent/reduce the chances of the cables being tampered with. After drilling any hole though an external wall for a cable, ensure the hole is sealed up around the cable using a sealant to prevent drafts.

To prevent a fire or electrical shock hazard, do not attempt to open the housing while the unit is exposed to rain, water or wet conditions. There are no user serviceable parts inside. Refer servicing to qualified service personnel. Avoid pointing the camera(s) directly at the sun or any bushes, tree branches or moving objects that might unnecessarily cause the camera to record.



PRODUCT OVERVIEW

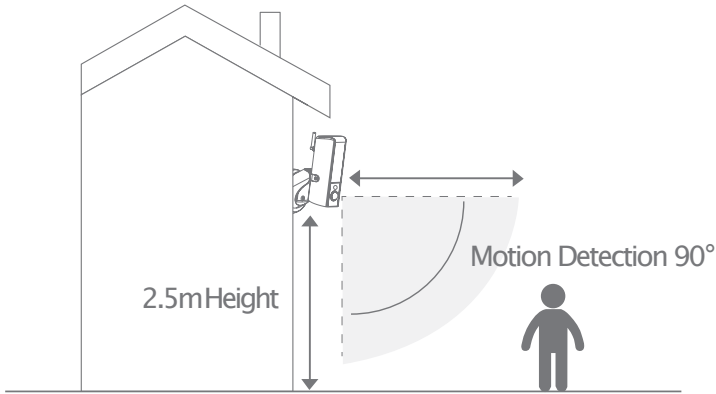


Note:

Press the reset button for 5 Seconds, until the LED starts blinking. The system will restore to factory default and you may set up the camera again.

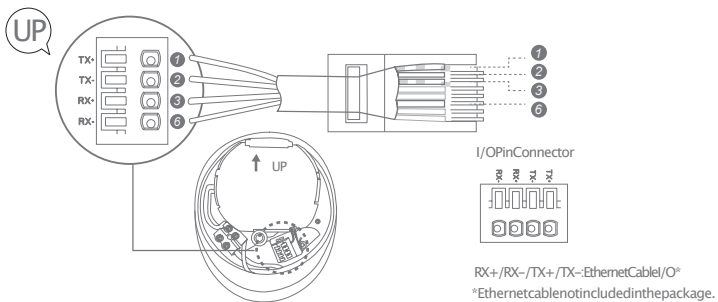
INSTALL YOUR DEVICE

For optimal performance install the lighting camera at a height between 2.5 and 4 meters. Disconnect power at fuse or circuit breaker before proceeding to the installation.



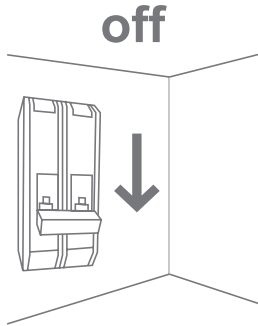
ETHERNET CONNECTION (OPTIONAL)

(1) Follow the below illustration to connect the ethernet cable if not using the Wi-Fi connection.

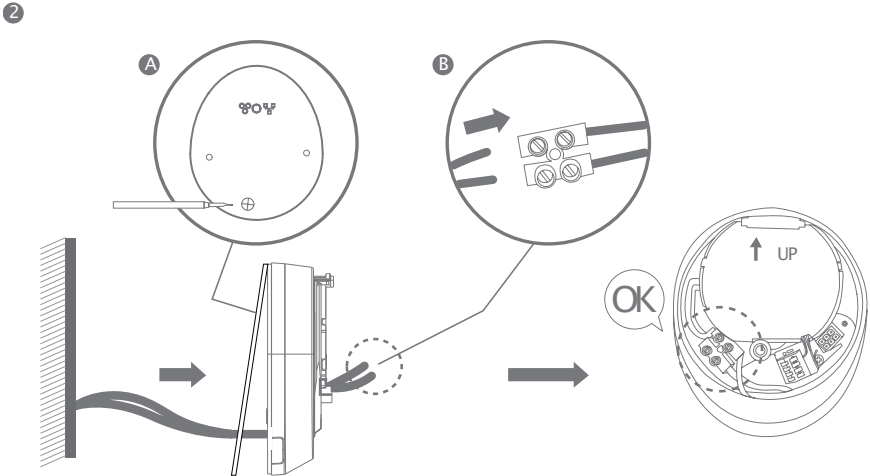


CAMERA SETUP INSTRUCTION

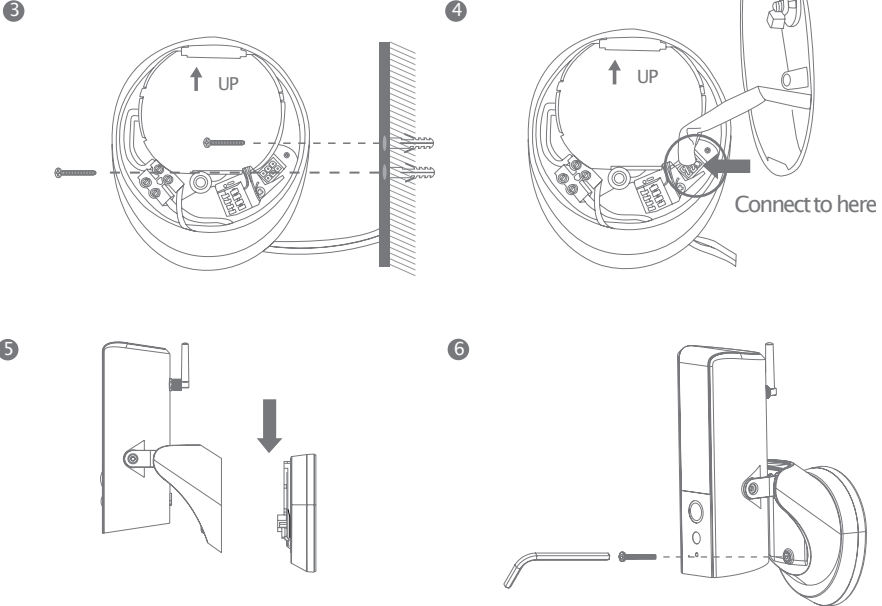
(1) Please make sure you have turn off the power from the breaker before this step.



- (2) A) Make a small hole in the rubber pad to have AC power wire run into the junction box base.
B) Lead the wires to the front of the base, screw the wires firmly to the terminal blocks.
Put the terminal blocks back into the base properly to protect it against water.

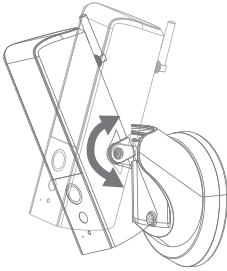


- (3) Fasten the junction box to the wall. Make sure that the UP sign is at the top.
- (4) Connect the power cable to the junction box.
- (5) Place the device on the the junction box.
- (6) Fasten the screw by using the philipps screw driver.

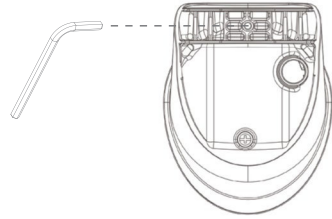


- (7) Adjust the tilting angle of camera by adjusting the screws on both side.
- (8) Loosen the screw on the back using hex key provided to adjust the pan angle. Screw it firmly when you done.
- (9) Once completed, turn on the power from the breaker and the lighting camera will power up. Wait for 1 minute for camera to connet to internet.
- (10) The LED light will be at its full brightness when initial start due to the regulation. You could adjust the brightness to prefer level once the camera has setup completed.
- (11) It is recommended to install the lighting camera at the flat surface under the eave or position to have better waterproof protection.

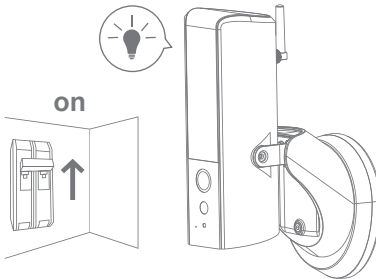
7



8



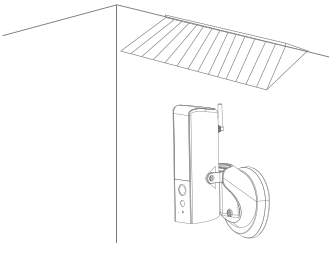
9



10



11



APP DOWNLOAD AND INSTALL

Please download and install the "SecuFirst HD" APP to your device.



For iOS

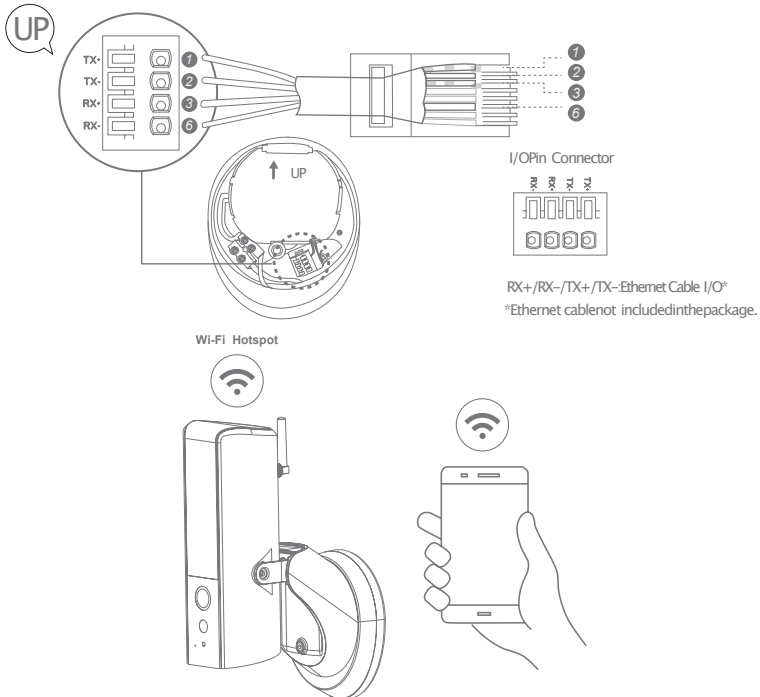


For Android

APP SETUP

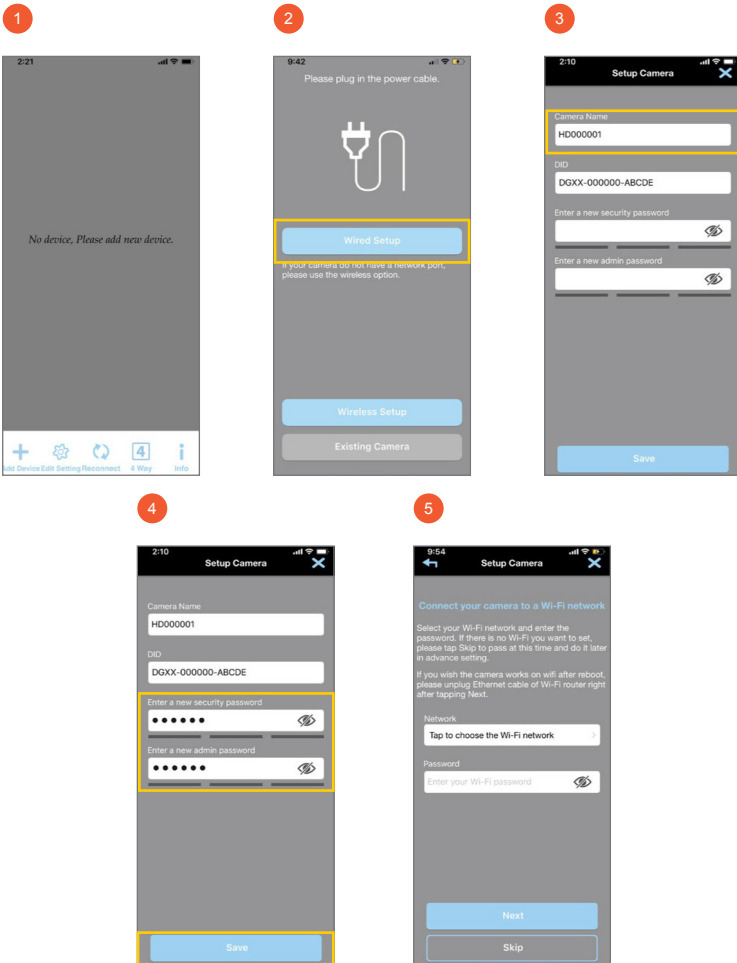
Wired Setup

Please connect Lighting camera to your home router by included Ethernet cable.



Setup Steps

1. Launch the “SecuFirst HD” App. Press “+” to add your device in list.
2. Select “Wired Setup”, It will search and obtain your device ID information.
3. Name your new device.
4. Enter your own new security and admin password, then press “Save”.
5. If you would like to connect your device to home Wi-Fi router, please select your home Wi-Fi SSID and enter the password, then press “Next”. If you would not, please press “Skip” and keep your Ethernet cable being plugged.



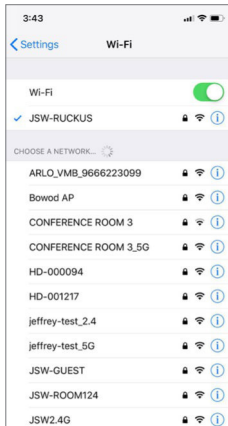
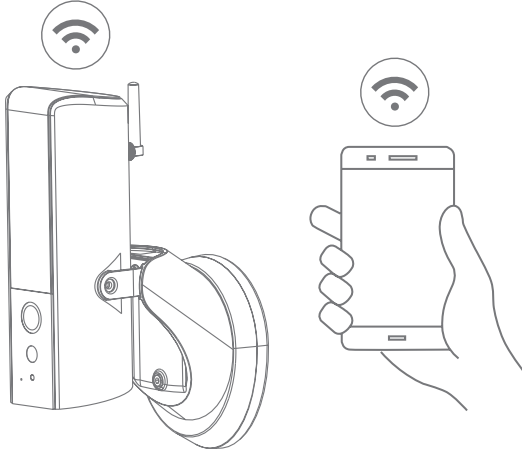
Note:

Device is only able to connect to 2.4GHz Wi-Fi router; 5GHz Wi-Fi router is NOT supported.

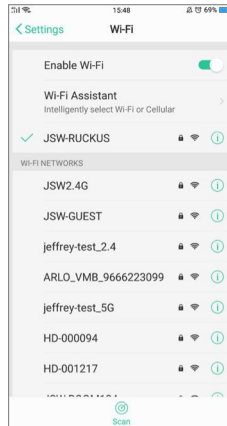
Wireless Setup

The device broadcasts “HD-xxxxxxx” as a hotspot. Please go to Wi-Fi setting page in your mobile device, select the “HD-xxxxxxx” and enter the default password “12345678”.

Wi-Fi Hotspot



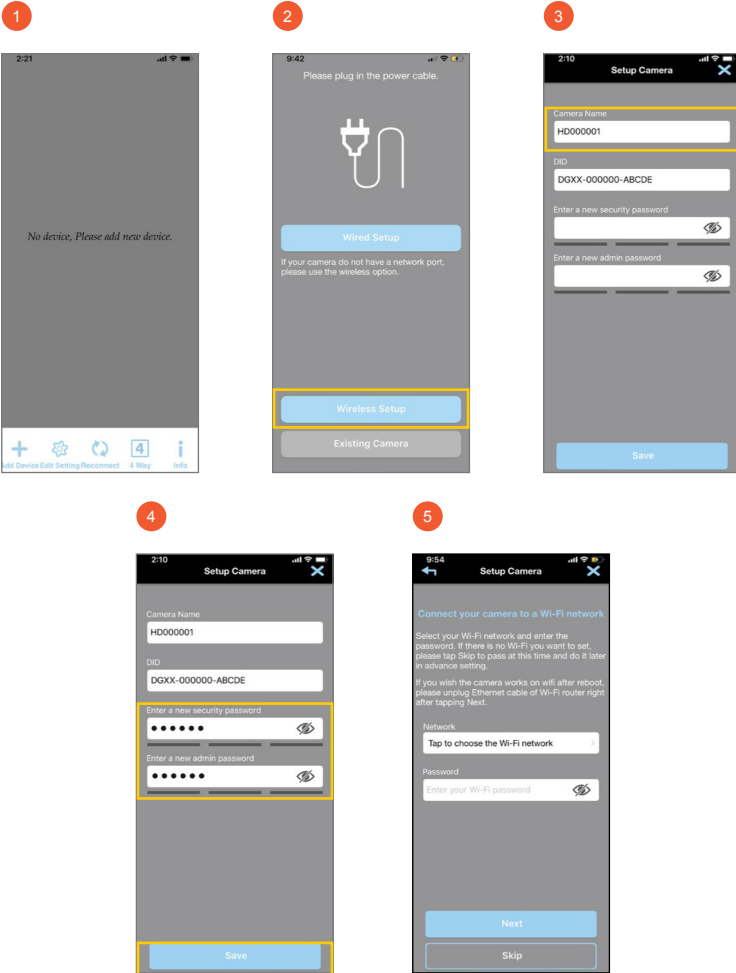
(iOS)



(Android)

Setup Steps

1. Launch the “SecuFirst HD” App. Press “+” to add your device in list.
2. Select “Wireless Setup”, It will search and obtain your device ID information.
3. Name your new device.
4. Enter your own new security and admin password, then press “Save”.
5. If you would like to connect your device to home Wi-Fi router, please select your home Wi-Fi SSID and enter the password.



Note:

Device is only able to connect to 2.4GHz Wi-Fi router; 5GHz Wi-Fi router is NOT supported.

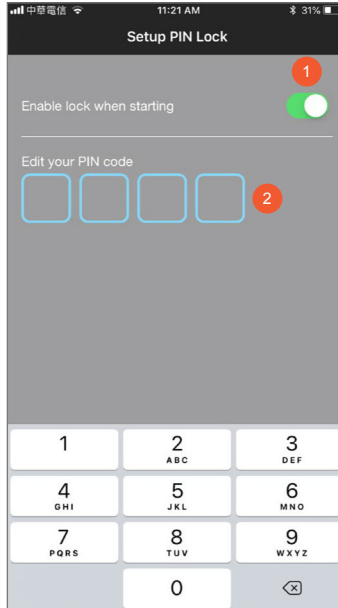
Home Page / Device List

1. ADD Device: To add the new devices in list.
2. Edit Setting: To access “Setting”, “Delete” & “Event”.
3. Reconnect: Refresh connection of all the devices in list.
4. 4 Way: Quad-View for 4 cameras available in device list.
5. Info: Setup PIN Lock, APP version information.



PIN Lock

1. Enable/ Disable PIN Lock: You will be required for entering PIN when you launch APP.
2. Enter your PIN Code: 4 digits number for setup your PIN.

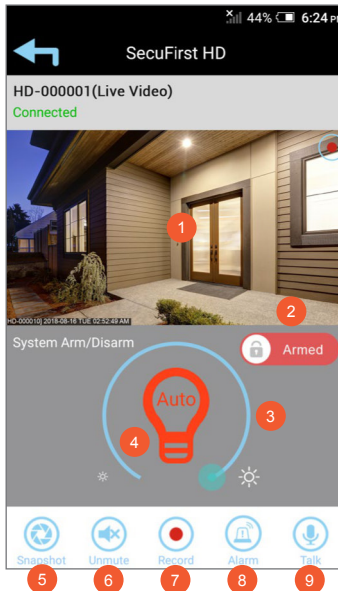


Note:

If you forget your PIN, please remove your APP and reinstall it.

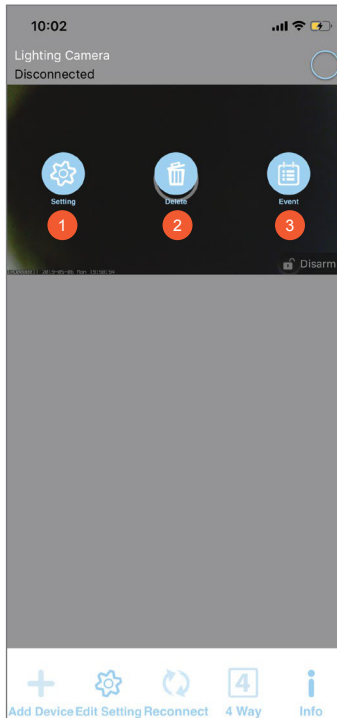
Live View

1. Live View
2. System Arm/Disarm
3. Light Brightness Adjust Bar
4. Light Mode On/Auto/Off
5. Snapshot: Tap to take snapshot of the live video. The captured snapshots will store in your mobile device.
6. Mute/Unmute: Mute or unmute the live audio.
7. Record: Record a short video clip. Your video is automatically saved to the camera's internal SD card memory.
8. Alarm: Manually trigger alarm.
9. Talk: Push and hold this icon for enabling Push-to-Talk function to speak through the camera's speaker.



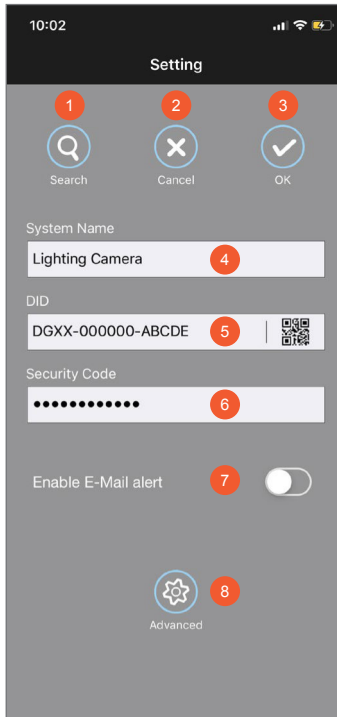
Edit Setting

1. Setting: Tap to access Basic and Advance setting, Please refer to “**Basic & Advance Setting**” Section.
2. Delete: Tap to delete the device.
3. Event: Tap to review recording clips, please refer to “**Event**” section.



Basic Setting

1. Search: Auto search for available devices under your LAN (Local Area Network).
2. Cancel: Back to previous step.
3. OK: Save all the modifications you edited.
4. System Name: Name your device.
5. DID: Device Identification for making remote connection.
6. Security Code: Password for remote access to device.
7. Enable/Disable E-Mail Alert.
8. Advanced: Access to advance setting, Admin Password is required.
(Default Admin Password is "123456")

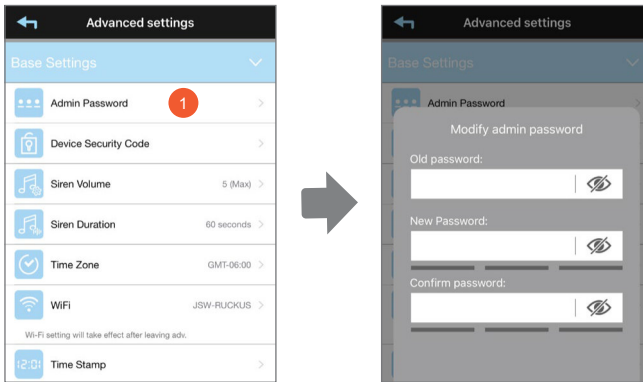


Advance Setting

Base settings

1. Admin Password:

The Admin Password is a specific security code for the administrator to change the advanced settings. The default admin password is 123456. Please use this function to change the default admin password into your personal admin password. For your own protection of your system configuration, it requires Admin password every time you access to advance settings.

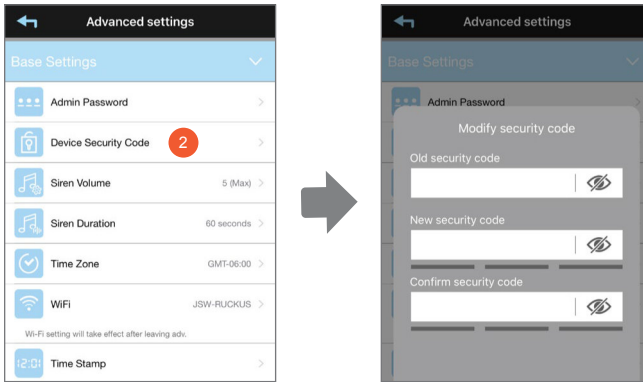


Note:

If you forget your Admin Password, you have to rest the device. Long press the reset button on the camera for 5 seconds to restore all settings to factory default. And you need to follow the setup process for adding your device again.

2. Device Security Code

The Device Security Code is a specific security code to access the camera. The default password of the camera is 123456. Please use this function to change the default password into your personal security code.

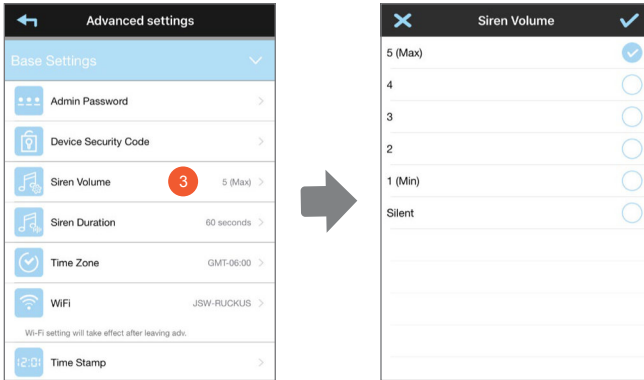


Note:

If you forget your Device Security Code, you have to reset the device. Long press the reset button on the camera for 5 seconds to restore all settings to factory default. And you need to follow the setup process for adding your device again.

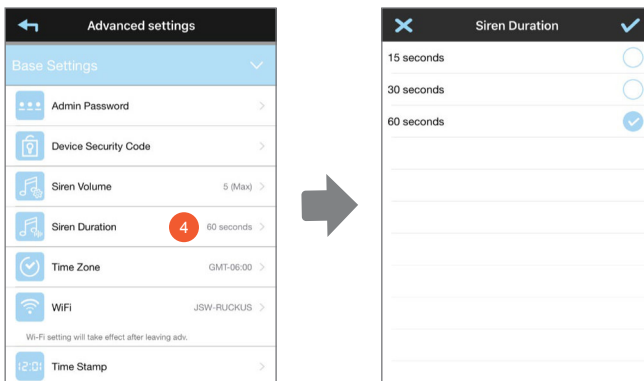
3. Siren Volume:

5 levels of volume and silent mode can be selected.



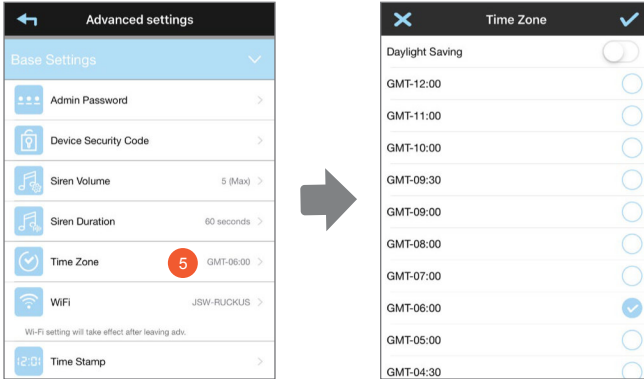
4. Siren Duration:

15/30/60 seconds can be selected while alert trigger.



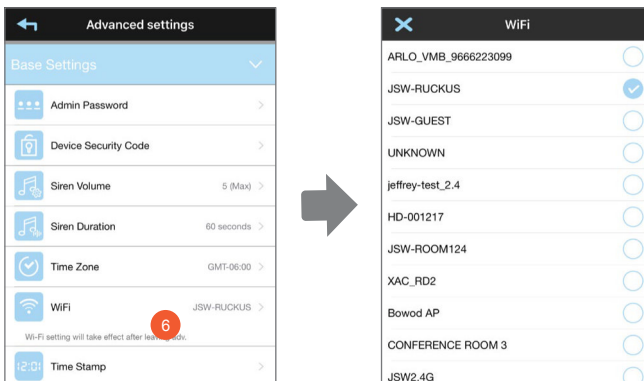
5. Time Zone:

The drop down list shows all time zones. Select the time zone according to the location of your device. If your date/time is during the daylight saving time period, please also enable the Daylight Saving function to adjust the system time properly.



6. Wi-Fi:

The Wi-Fi setting allows you to choose the wireless network you would like your device connect to. When you tap the “Wi-Fi” button, the system automatically scans the nearby Wi-Fi network and shows the available Wi-Fi SSID in the drop down list. Select the Wi-Fi network and enter the password. Due to security concerns, it is recommended that you use the WPA/ WPA2/ WPA2-PSK protocol for Wi-Fi network.



Note:

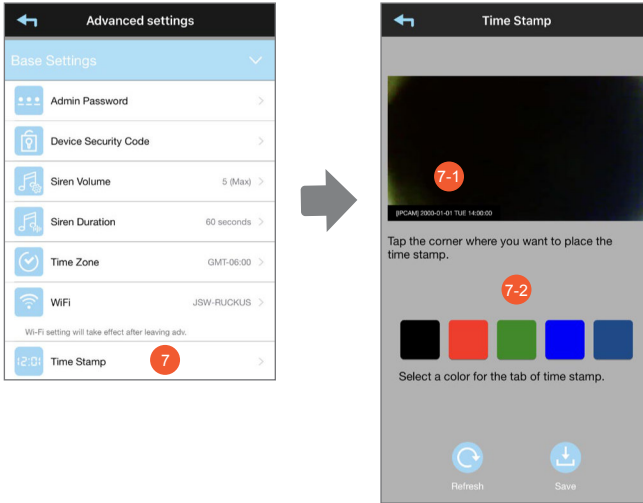
Device is only able to connect to 2.4GHz Wi-Fi router; 5GHz Wi-Fi router is NOT supported.

7. Time Stamp:

This section allows you to change the time stamp background color and Enable/ Disable the time stamp.

7-1. Enable/ Disable the time stamp

7-2. Tap to change the time stamp background color.

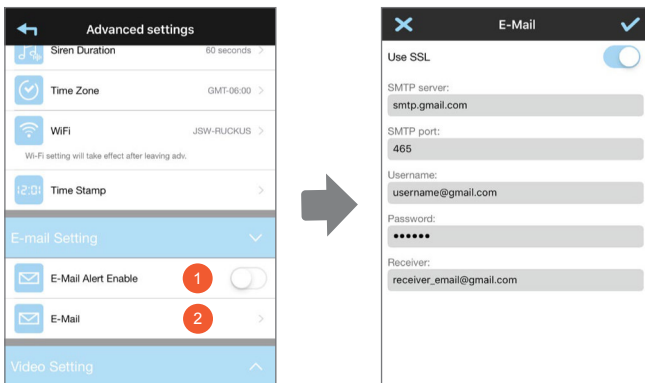


E-mail Setting

1. E-Mail Alert Enable: Enable/ Disable E-mail alert.
2. E-Mail:

The email setting allows you to configure the email settings, email account and password. Gmail account is as an example.

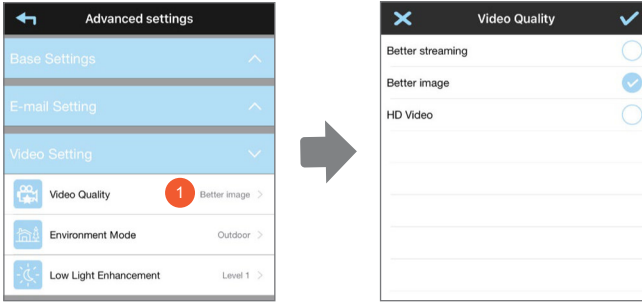
Click the “Use SSL” check box will transmit the data in encryption. This setting requires the Simple Mail Transfer Protocol (SMTP) configuration. Most ISPs use the SMTP method to transfer outbound mail via the Internet. Only use the SMTP that supports SSL.



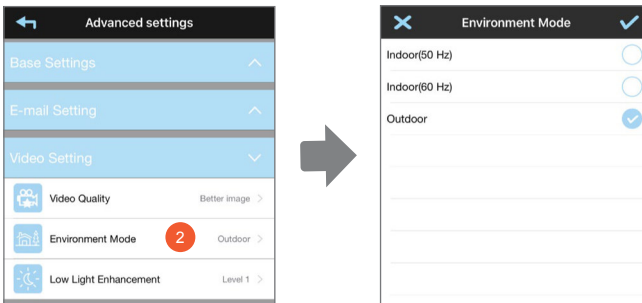
Gmail Setting (suggested)		
SMTP Server	smtp.gmail.com	Enter the gmail SMTP server
SMTP Port	465	Enter the SMTP port 465
Username	XXX@gmail.com	Enter your email address
Password	XXXXXXXXXX	Enter the password for this gmail account
Email to	XXX@gmail.com	Enter the email address for the recipient who receives the email alert.

Video Setting

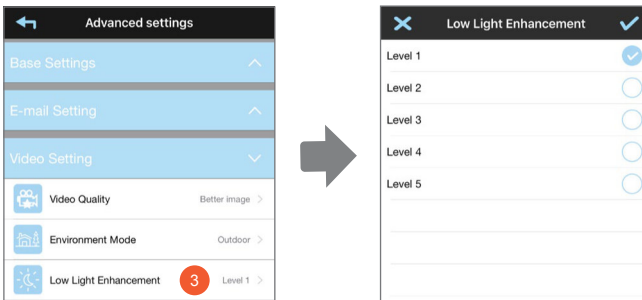
1. Video Quality: Select the live video quality between **Low** (Better Streaming), **Medium** (Better Imagine), and **High** (HD Video). If live video takes a long time to load or stutters during streaming, this may be caused by a slow or unstable connection to the Internet—try using the \ Low setting that may improve loading times and provide smoother video streaming.



2. Environment Mode: The Environment Mode setting allows you to select the power line frequency used at the location of the camera. The power line frequency varies depending on geographic region. It may cause image flicker if wrong frequency is selected. Please check with local authorities for proper setting.
There are two types of video color tone. User can change it between warm- yellow (indoor) and cool-white (outdoor).



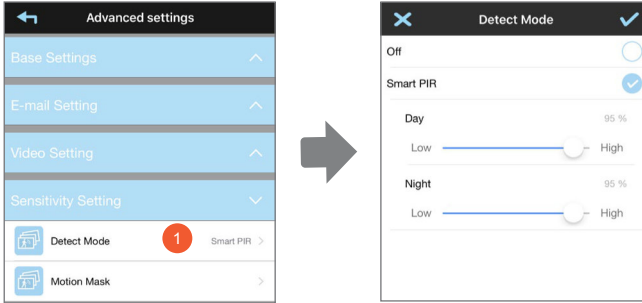
3. Low Light Enhancement: 5 levels of enhancements for improving night view quality. Level 5 is the maximum.



Sensitivity Setting

1. Detect Mode:

Adjust the PIR detecting range & sensitivity

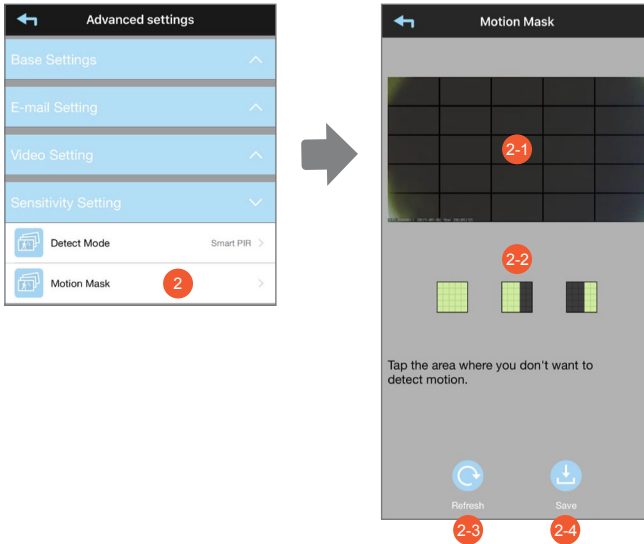


Note:

Moving cars, passersby, direct sunlight or reflection may cause unwanted motion detection. To minimize false motion detections, adjust your camera angle slightly downward and ensure the field of view is focused only on the immediate area of concern and excludes as much background activity as possible.

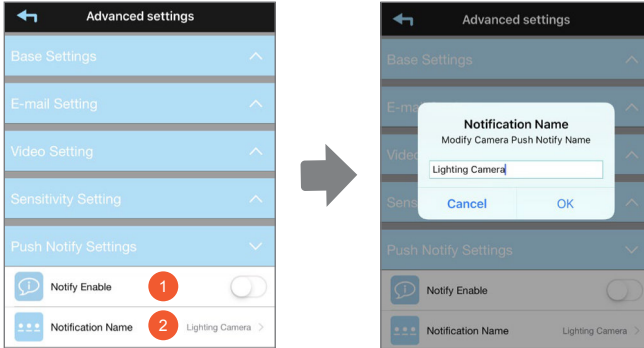
2. Motion Mask:

- 2-1. Tap the area where you don't want to detect the motion.
- 2-2. 3 icons for quick tapping of bar area.
- 2-3. Reset button.
- 2-4. Save setting.



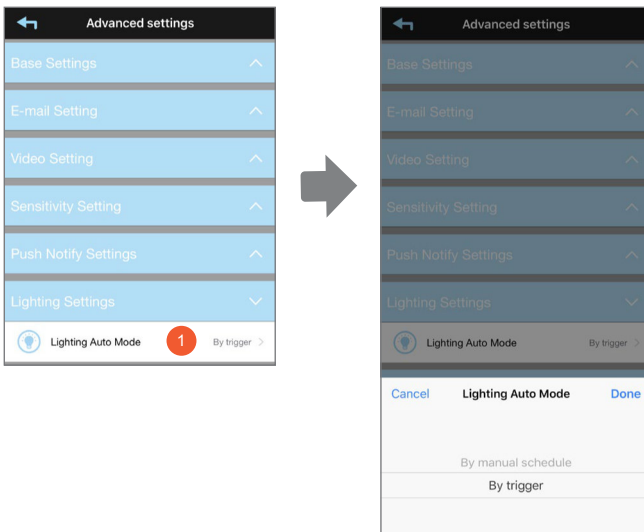
Push Notify Settings

1. Notify Enable: Enable/Disable push notification.
2. Notification Name: Customized the name which be shown on your push message.



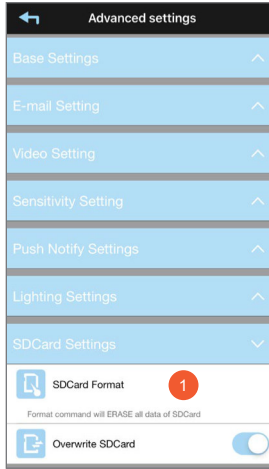
Lighting Auto Mode

1. Lighting Auto Mode: By Trigger/ manual schedule.



SD Card Settings

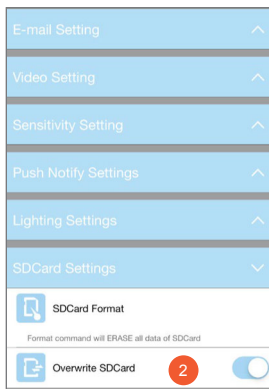
1. SD Card Format: Please format your SD card before using. The system is optimized to Class 10 memory card. Memory card with lower specification will decrease the recording and playback function efficiency. During format process, all recording & viewing will stop until format process completes.



Note:

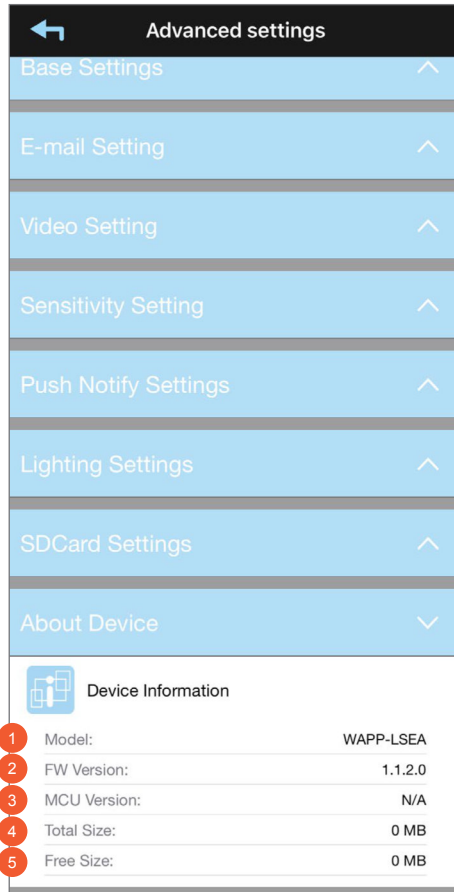
Formatting your memory card will ERASE all the data from it and you will not be able to get the data back. Please back up your video files BEFORE formatting the memory card.

2. Overwrite SD Card: The system will be overwriting the old files when the available memory card capacity is not enough when you enable this function. This ensures the most up to date video recordings can be saved.



About Device

1. Model: Display your device's model#.
2. FW Version: Display your device's firmware version.
3. MCU Version: Display your device's firmware version.
4. Total Size: Display the capacity of your SD memory card.
5. Free Size: Available capacity of your SD memory card.

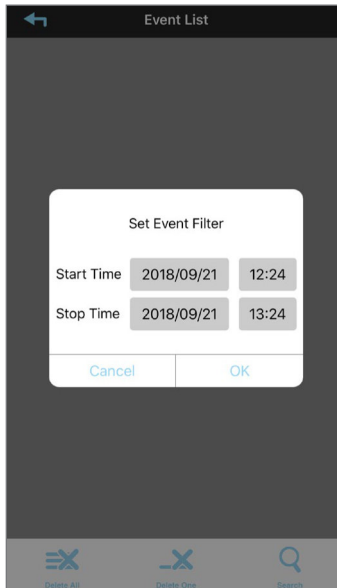


Event

The recorded video files on your camera are automatically saved to the memory SD card. You can remotely access the files for playback via your smartphone.

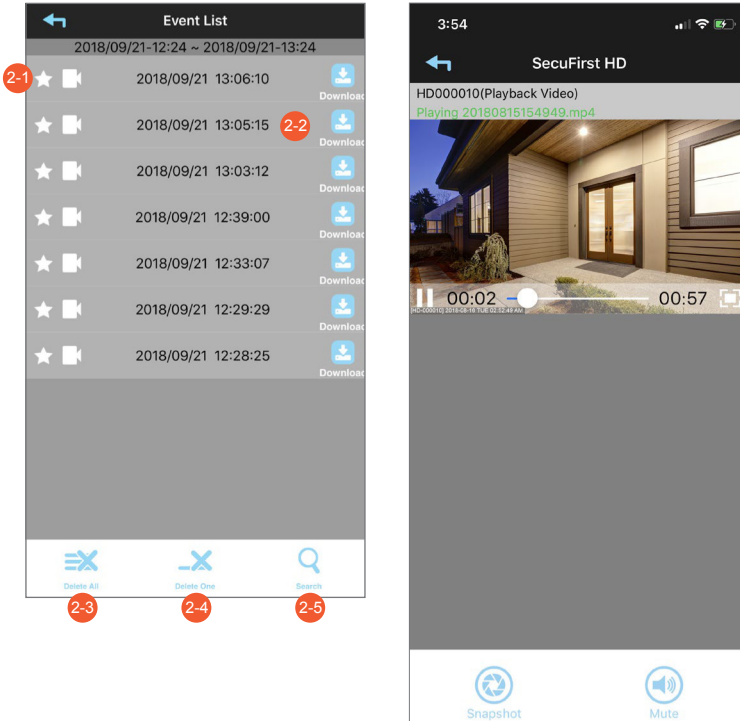
 Tap the gear icon to access the edit menu.

1. Set Event Filter



2. Play Back

- 2-1. Select the event you would like to play back.
- 2-2. Download the video clip into your mobile device.
- 2-3. Delete All: Delete all the video clips in the event list.
- 2-4. Delete One: Delete individual clip you selected.
- 2-5. Search: Search the specific events by date & time sorting.

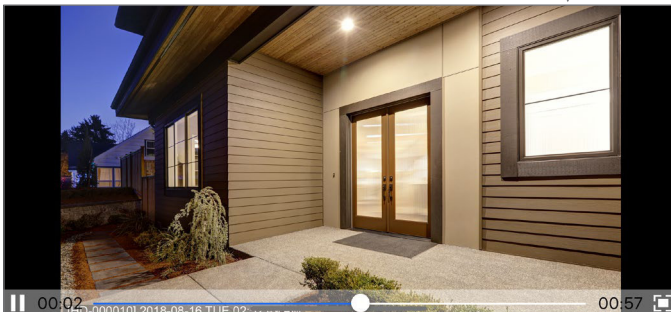
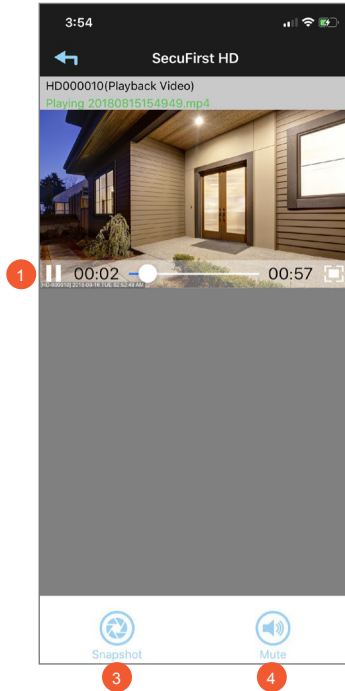


Note:

During the download process, system will stop both the live view streaming and recording functions. APP will automatically inform any user accessing the camera that the system is busy and the connection has been terminated.

Play Back

1. Tap to pause/play video
2. Tap to view full screen
3. Tap to take snapshot of the playback video. The captured snapshots will store in your mobile device.
4. Mute/Unmute: Mute or unmute the audio.



TROUBLE SHOOTING

IF	SOLUTION
The APP can not found the camera	<ul style="list-style-type: none"> · Make sure your network supports the DHCP protocol. · Make sure the camera and your mobile device connect to the same Wi-Fi router for the first setting. · Make sure the Wi-Fi router is activated. · Make sure the camera is properly powered on. · Use the “ADD CAMERA” function to manually add the camera.
Wi-Fi router is not shown in the drop down list	<ul style="list-style-type: none"> · Make sure SSID broadcasting function is enabled in the Wi-Fi router. Consult your Wi-Fi router manufacturer for the settings if necessary. · Change the wireless security protocol of your Wi-Fi router into WPA/WPA2/WPA2-PSK. Due to security concerns, WEP protocol is not suggested for some Wi-Fi routers. <div style="background-color: #e0e0e0; padding: 10px; border-radius: 10px; margin-top: 10px;"> <p>Note: WPA/WPA2/WPA2-PSK encryption protocols are newer and more effective security standards for wireless networks than the older and less-secure WEP protocol.</p> </div>
No image appears	<ul style="list-style-type: none"> · Make sure the power adaptor is not damaged or defective and plugged into an electrical outlet with power. · Relocate the camera to obtain the best reception of wireless signals. · Make sure the camera is properly configured in App. · Make sure the mobile device is connected to 3G/4G/Wi-Fi properly.
Low wireless signal Poor image quality	<ul style="list-style-type: none"> · Wireless devices such as wireless home stereo system may reduce the signal strength. Leave as much space as possible between the camera/mobile device and these wireless devices. · Clean the camera lens using lens cleaning cloth. Spots or dust on the lens can also cause image quality problems.
Motion detection is not working or over-react	<ul style="list-style-type: none"> · Make sure the sensitivity setting is turned ON (please refer to the Sensitivity Setting section). · In motion detection mode, a moving object within the camera viewing angle is necessary to trigger the motion sensor for recording.

<p>The APP cannot record any video clips</p>	<ul style="list-style-type: none"> · Make sure the TF card has been correctly inserted. · Make sure the motion detection function has been enabled. (please refer to the Sensitivity Setting section). · Please format the TF card when it is used for the first time (please refer to the TF Card Format section) · Make sure you are using Class 10 rated memory card.
<p>Email alert is not working</p>	<ul style="list-style-type: none"> · Make sure the email alert function is enabled (please refer to the Email Alert section). · Gmail account is suggested for the email alert function. Make sure you have setup the system configuration as suggested in the Email Alert section. · Make sure the email address is has been correctly entered.
<p>Memory card error</p>	<ul style="list-style-type: none"> · Make sure the memory card is correctly inserted and formatted. · Use the provided memory card within the package to ensure proper operation. · Make sure your are using Class 10 rated memory card. <div style="border: 1px solid gray; border-radius: 15px; background-color: #f0f0f0; padding: 10px; margin-top: 10px;"> <p>Note: Please backup the data before formatting. Format function will erase all the data on the memory card.</p> </div>
<p>Wrong data and time are shown</p>	<ul style="list-style-type: none"> · Wrong date and/or time will result in unexpected record schedule. Make sure you've selected the correct time zone (please refer to the Time Zone section). · Confirm the system date/time of the mobile device to ensure correct operation. · System will clock itself when connect to the internet. Make sure the system is connected properly to the internet. You may use your mobile device to access the system to see if remote view is functioning properly.

PRODUCTION SPECIFICATION

Networking Parameter	
Wireless Technology	IEEE 802.11 b/g/n
Network Connection	Ethernet (10/100 Base-T/Base -TX); Wi-Fi
Network Protocols	TCP/IP, UDP, SMTP, NTP, DHCP, ARP
Simultaneous Viewers	3 concurrent sessions
Security	WPA /WPA2/WPA2-PSK (TKIP, 128 bit AES)
Camera Parameter	
Image Sensor	2 Megapixel, 1/2.7" CMOS
Environment Rating (Ingress)	IP55
Light Source Environment	Outdoor
Local Storage	Micro T-Flash Memory, Maximum 128GB (not included)
Viewing Angle	FOV 120
Night Vision	IR LED
Color Temperature	3000K
LED Light Dimmable	Max 800 Lumen
Video Audio Parameter	
Image Compression	H.264 High profile
Image Resolution	Full HD (1920*1080P)
PIR Detection	90°
Audio	Two-way Audio
Supported Mobile Device	
iOS requirement	iPhone 6/iPad air with iOS 10.0 or Above
Android requirement	Android 5 or Above
Hardware requirement	1.5GHz dual core or above 1GB or above internal memory
General Parameter	
Power Requirements	90~260V
Operating Temperature	-10°C~+40°C
Storage Temperature	-20°C~+50°C

STORAGE MEDIA MANAGEMENT

Micro TF Card Capacity (Class 10)	Event	Minutes
8G	400	180
32G	1600	320
64G	3200	760
128G	6400	1440

SecuFirst

Ericssonstraat 2

5121 ML Rijen

Netherlands

W: www.secufirst.eu

E: info@secufirst.eu