

Button Overview



Keys	Function
①	Main/Menu button: select between Golf Mode, Pedometer, Tracker, and Settings. Main/Power Button: press and hold to turn the device on/off.
②	Back/Exit button
③	Toggle buttons: choose between menu options, change holes, and settings.
④	Voice button: Select during play to hear the voice feature.

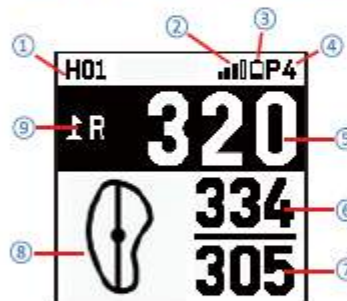
Settings

Display	Color Theme, Orientation
Clock	Date, Time, Time format
Units	Meter / Yard
Language	Multi language
About	Information(Device, S/N etc.)

Contents

1.	DEVICE OVERVIEW	1
2.	GETTING STARTED	2
3.	BLUETOOTH	7
4.	GOLF MODE	9
5.	GPS TRACKER	15
6.	SETTINGS	19

Screen Description



- ① Hole Number
- ② Satellite indicator
- ③ Battery indicator
- ④ Par info
- ⑤ Distance to the center of the green
- ⑥ Distance to the back of the green
- ⑦ Distance to the front of the green
- ⑧ Dynamic Green View
- ⑨ Left/Right Green Selection

Menu Overview



Menu	Description
	Golf Mode
	Bluetooth Setting
	Tracker (GPS Odometer)
	Settings (Display, Clock, Unit, Language, About)

GETTING STARTED

VOICEX

Power On/Off

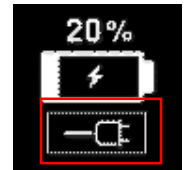
- Press and Hold button ① for 3 seconds to turn the VOICEX ON/OFF.
- After Power-on, 4 icons will be displayed on screen.
- Golf Play Mode will start automatically 20 seconds after power-on.
- If you select another menu option before Golf Mode starts automatically, Golf Mode will not start. You will have to start Golf Mode manually by selecting it from the menu later on.



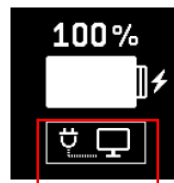
Charging

- When power gets critically low, all functions are disabled and "LOW POWER" message will be displayed.
- Plug the USB cable into any standard USB Power Adapter. Then plug the USB power adapter into an electric socket. This USB cable is compatible with USB ports found on computers, laptops, automobiles, or standard 5V AC USB chargers.
- Plug the Micro USB cable into the Micro USB socket of the VoiceX . Then the screen shown in the image to the right will display when the device is connected to the USB charging cable. This screen indicates USB data connection as well as battery charging.
- The battery indicator will display while charging, and will display 100% when fully charged. Then, remove the Micro USB cable from device.
- If your VoiceX battery display is empty when connected and shows a low-battery icon, it indicates that a full charge has not been achieved. Check your connection to make sure the cable is properly aligned with the connector, and then allow the VoiceX to charge until the battery shows 100%.

*** IMPORTANT : DO NOT USE QUICK-CHARGER AC ADAPTERS TO CHARGE THE VOICEX. DOING SO MAY CAUSE DAMAGE AND VOID THE WARRANTY. AC ADAPTERS SHOULD NOT EXCEED 5.0V. CHECK YOUR AC ADAPTER'S RATING PRIOR TO USING.**



<Wall Charger>



<Computer>

GETTING STARTED

VOICEX

Software Updates


1. Downloading the GolfBuddy Management Software(GB Manager) to your computer

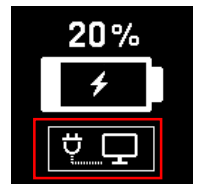
- Please visit our website at www.golfbuddyglobal.com
- Click on the panel titled "Download GB Course Manager." You will then see a screen with an option to choose either Windows or Mac based software.
- Click on the correct version for your computer. Once downloaded, you can run the application to install the GB Manager on your computer
- Once completed, you will see a blue icon labeled "GolfBuddy World Course Manager" on your desktop that you will use to access the GB Manager once you have registered.

2. Creating a User ID:

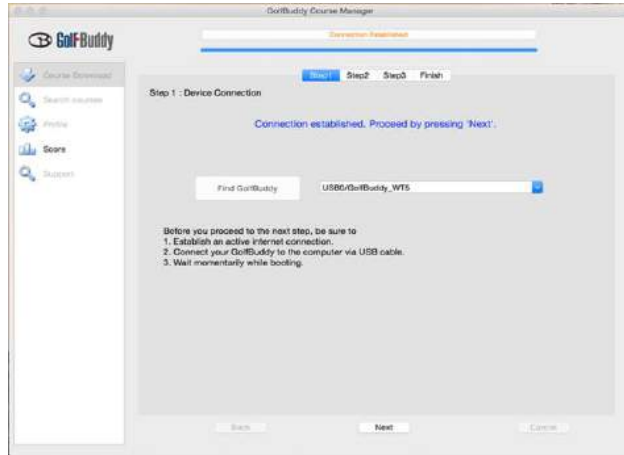
- Open the GB Manager application by clicking on the blue icon on your desktop.
- You will see a Login Panel . Click on "Sign up for new user" at the bottom. This will bring up a panel for you to create your User ID and Password.
- Fill in all the details that are required (indicated by " * "). Please note the instructions regarding no Caps, Symbols, Spaces, & 4-15 character-long requirement. You will need to click the "Check Availability" to verify your selected User ID is valid and not already being used.
- Click "Submit" at the bottom of the form when finished.
- You have now created your User ID and Password...
✘ **Make sure you write them down somewhere in case you forget them!**

3. Registering your GolfBuddy VOICEX:

- Connect your GolfBuddy unit to a USB port on your computer using the USB cable provided with the unit.
- After a short time, your GolfBuddy unit should show an icon  on the screen indicating it is connected to the computer. You can disregard any driver download requests that your computer may say is required.
- Click on the blue GB icon on your desktop and open the Login Panel.



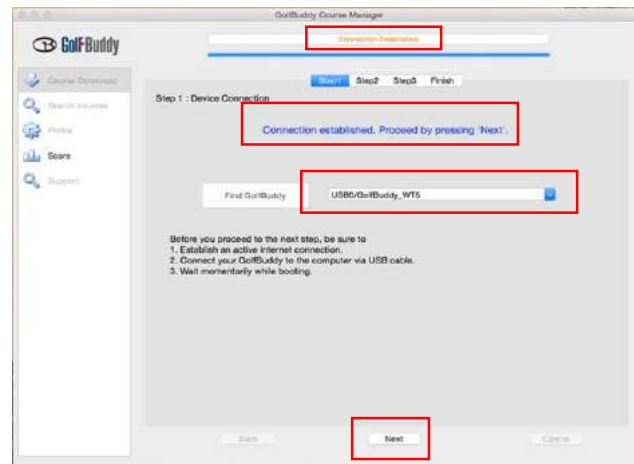
- Enter your User ID and Password. You should now see a panel that indicates the GB Manager is searching for the device. After a short time, you will see “Connection Established”. At this stage, your unit is successfully registered to the account that you created and you will not be able to register your unit under a different account.



4. Updating your GolfBuddy VOICEX in four Steps

STEP 1 : Connection

- Once you get the “Connection Established” message, please click “Next” to proceed to **Step 2: Firmware Update**.



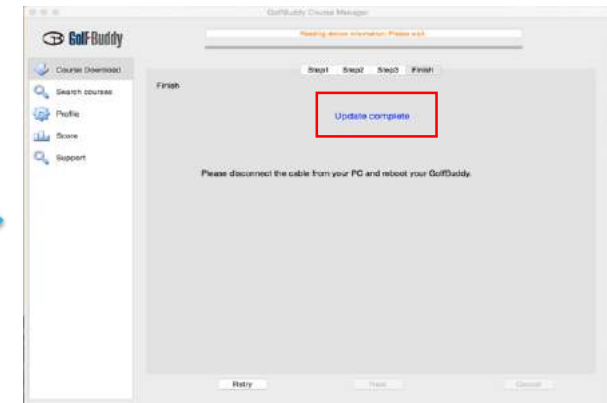
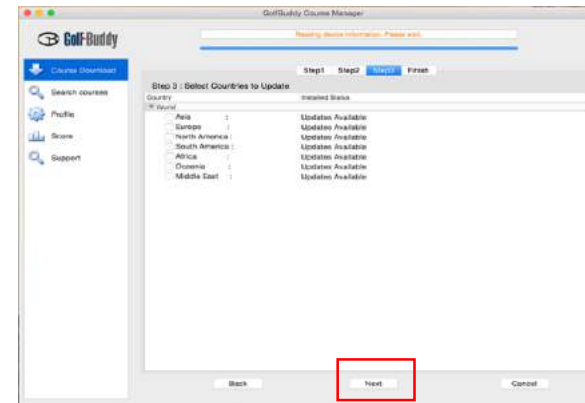
STEP 2 : Firmware Update

- At step 2, click “Next” to install the latest firmware.
- If the firmware is already up-to-date, click “Next” to proceed to step 3.



STEP 3 : Course Download

- Select the countries that you would like to update and click “Next”.
- You will see a panel that asks you to “Overwrite” or “Newly Updated Only”(default option - already selected). Click “OK” to start the course update. Once all the courses have been downloaded, you will receive a message “Update Complete”.
- Your GolfBuddy is now ready to go with the latest updates!

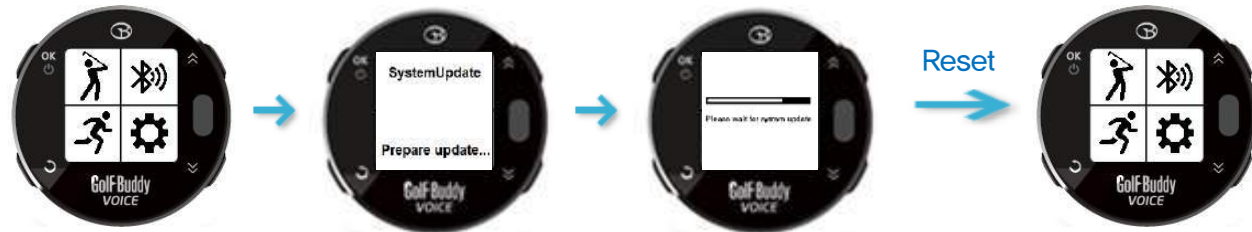


GETTING STARTED

VOICE X

STEP 4 : Disconnect

- After the message “Update Complete” is shown in Step 3, the VOICEX will need to be disconnected from the computer
- Then, the firmware update will start automatically, and it will take about 2 mins to finish the update.
- The firmware update of VOICEX will be finished by resetting it by itself.



GETTING STARTED

VOICE X

Connecting VOICEX to the mobile phone




- GolfzonDeca is not responsible for the loss ,interception ,or misuse of data sent or received via Bluetooth.
- Always ensure that you share and receive data with devices that are trusted and properly secured. If there are obstacles between the devices, the operating distance may be reduced.
- Some devices, especially those that are not tested or approved by the Bluetooth SIG, may be incompatible with your device.
- Do not use the Bluetooth feature for illegal purposes (for example, pirating copies of files or illegally tapping communications for commercial purposes).
- GolfzonDeca is not responsible for the repercussion of illegal use of the Bluetooth feature.

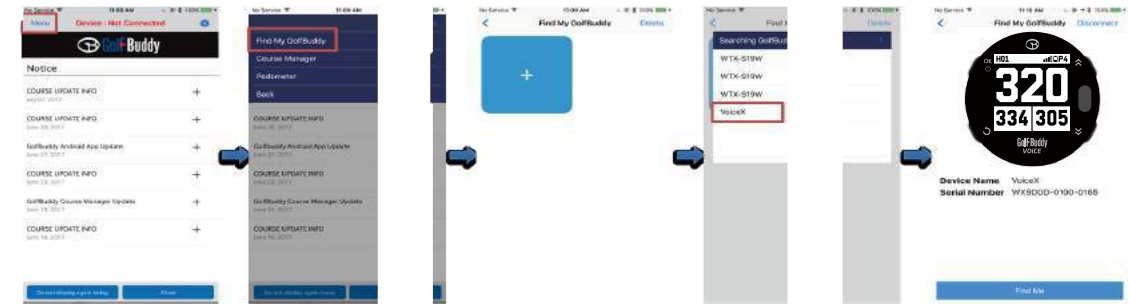
VOICE X

On the Bluetooth Setting menu,

1. Turn the Power and Visibility on and your VoiceX will automatically enter pairing mode.

Mobile phone

2. Open the GolfBuddy Smart App on your mobile phone 
3. Log In and Select **Find My Golfbuddy** in the menu.
4. Tap **+** to see a list of compatible devices available to add
5. Tap your VOICEX among the found device list.
6. Follow the on-screen instructions to complete the connection.



> Tap Menu

> Tap Find My GolfBuddy

> Tap + button to add your VOICEX

> Select your VOICEX in the found list

> Connection Complete

GETTING STARTED

Connecting VOICEX to the Bluetooth headset

Bluetooth Headset

1. Turn the Bluetooth headset on.
2. Make it enter the pairing mode according to the user manual.

VOICEX

- On the BT Settings menu, turn the “Power” on by pressing button ①.



Press ① to enter BT settings. Press ① to switch the Power.

- From the BT headset screen, search the BT headset by selecting the “Search...”.
- Once the BT headset is found, press button ① to connect it to your VoiceX.
- Press button ① to disconnect your BT headset after selecting it with buttons ③ and ④.
- Press button ① to remove the disconnected BT headset from the list after selecting it with buttons ③ and ④.



1. Press ① to enter BT headset.

1. Select 'Search...' with ③ and ④.
2. Press ① to search your BT headset.

1. Select your headset from the list with buttons ③ and ④.

2. Press ① to connect your BT headset.

1. The icon will appear after connection. (red box)

VOICEX

BASIC OPERATION

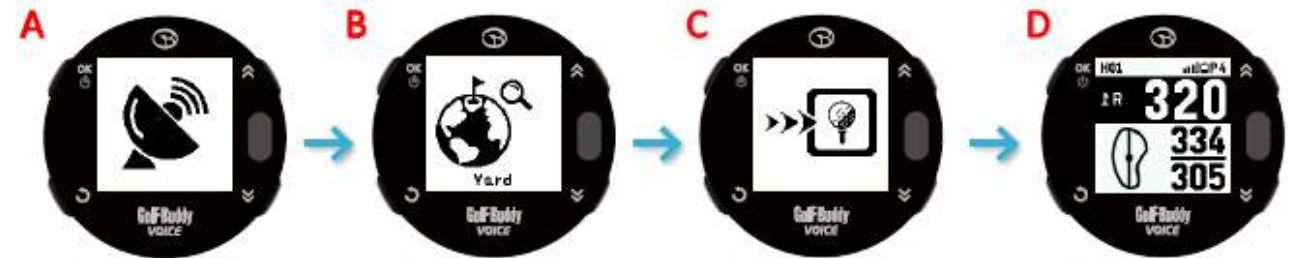
VOICEX

Play Golf mode

- From the main menu screen, use toggle buttons ③ and ④ to get to the Golf Mode icon and then press button ① to enter Golf Mode. After Play Golf is activated, screen A is displayed. After satellite connection, screen B is displayed.

- Once the golf club is found, screen C will be shown to proceed to the Tee Box.

- Once you arrive at the Tee Box, screen D will be displayed. and distances will be shown.



Searching For Satellite

Golf Course Found

Proceed to Tee

Play Golf Screen

Voice information for Distances to the Green

- In Golf Mode, when you press button ⑤, the VoiceX will verbally tell you distance to the center of the green.

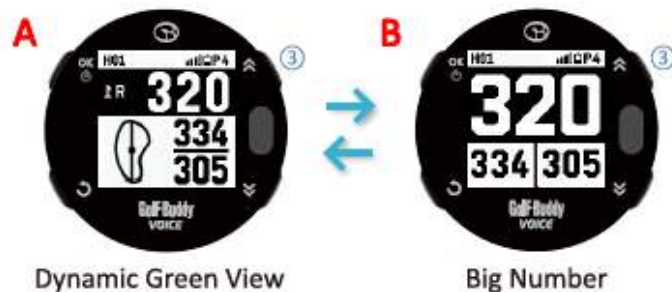
- Press and hold button ⑤ and the VoiceX will tell you distance to the front and back of the green.

BASIC OPERATION

VOICE X

Switching the display mode

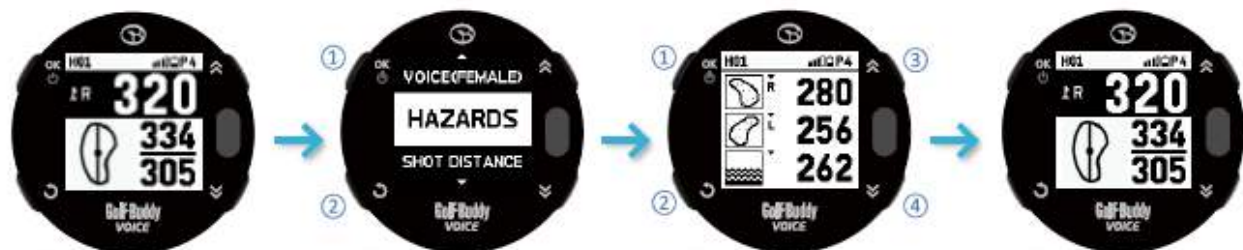
- Press and hold the buttons ③ to switch between main screen A and B shown below.



Target / Hazard Information

- Select "HAZARDS" by using the toggle buttons ③ and ④. Press button ① to view Hazard information.
- Or, you can enter the "HAZARDS" by pressing and holding button ④ for 3 seconds from Golf Mode.
- When more than 3 hazards are available, use toggle buttons ③ and ④ to view the next hazard.

H01	R	280
	L	256
		262



1. Press ① to enter the Hazards
2. Press ② to return to the main screen
1. Press ③ or ④ to view other Hazards
2. Press ① or ② to return to the main screen

BASIC OPERATION

VOICE X

Manual Hole Selection

- To change from the current hole to the next hole in Golf Mode, press button ③.
- To change from the current hole to the previous hole, press button ④.



Selecting the green (only available if there are 2 Greens in the hole)

- Press and hold the button ④ to Selecting Left, Right, and Dual Green shown below.



Quick Watch Mode (Sunrise/Sunset Time)

- In Golf Mode, press button ② to go to "Quick Watch Mode" where the current time, sunrise and sunset times will be displayed. The VoiceX will automatically tell you the current time.
- The Quick Watch Mode will be displayed for 5 seconds and will automatically return to Golf Mode. Or, instead of waiting, press button ② and it will return to Golf Mode immediately.

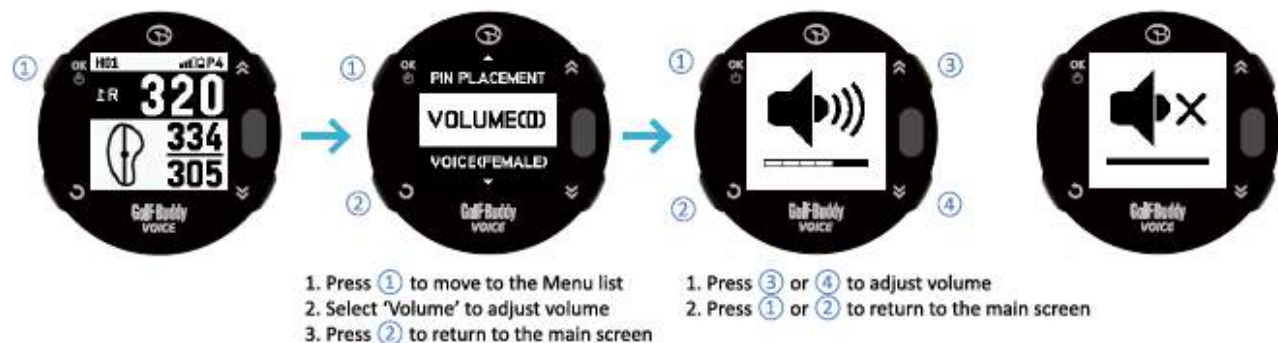


1. Press and hold the button ②.
1. After 5 seconds, the screen will be displayed
2. Press ② to return to the main screen

Voice Control

Adjusting the volume

- From Golf Mode, press button ① to go to the full menu screen.
- Select "VOLUME" by using the toggle buttons ③ and ④ and then press button ① to go to the Volume controlling screen.
- Use toggle buttons ③ or ④ to control volume or set it to mute.



Selecting a gender of voice

- You can choose a gender of voice (WOMAN and MAN) by selecting "VOICE" and pressing button ①.



Exit Golf Mode

- From Play Golf Mode, press and hold button ②, then the VoiceX will display a prompt to confirm your selection.
- If you want to end Golf Mode, select YES by pressing button ① with toggle buttons ③ and ④ . Alternately, if you want to keep playing golf, you can return to Golf Mode by pressing button ② or selecting NO.



How to use the Demo Mode

- To view the function of Golf mode while away from the golf course, you can put the Voice into "Demo mode". To enter "Demo mode", when you see your device is searching for satellite, press and hold button ③ for 3 seconds.

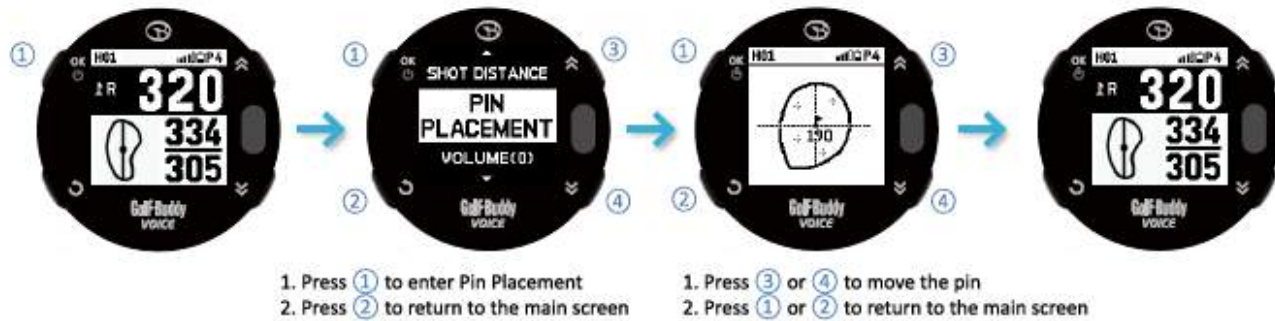


ADVANCED OPERATION

VOICEX

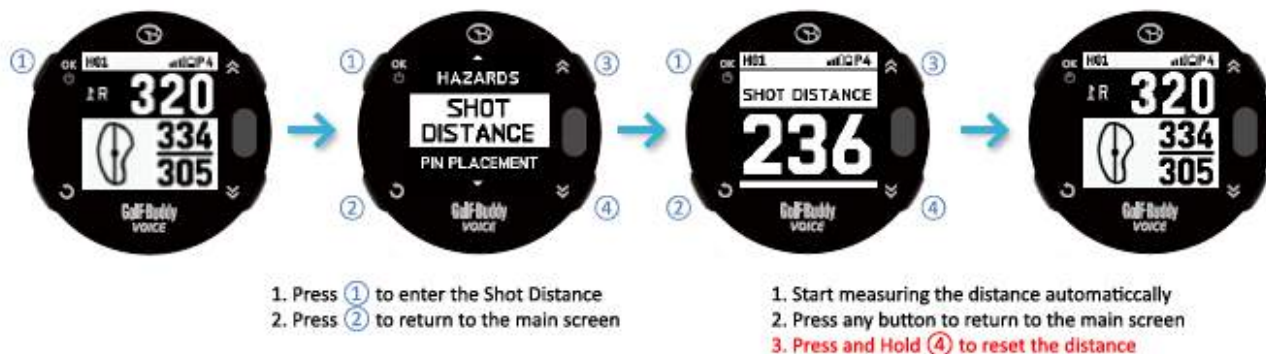
Pin Placement

- From Golf Mode, press button ① to go to the menu list. With toggle buttons ③ and ④ find the "Pin Placement", then press button ① to go to "Dynamic Green View" screen.
- From Dynamic Green View screen, you can change the placement of the pin with toggle buttons ③ and ④.
- After pin placement, you can return to the golf screen by pressing button ① or ②.



Measuring Shot Distance

- From Golf Mode, press button ① to show the full menu, then with toggle buttons ③ and ④ go to the "Shot Distance" and select by pressing button ①.
- Press and hold button ④ to reset the distance.
- From Shot Distance Mode, the VOICEX will return to the main screen by pressing any button.



GPS TRACKER

VOICEX

Using the GPS Tracker

- From the main menu screen, use toggle buttons ③ and ④ to get to the Tracker icon and then press button ① to enter Tracker.
- There are 3 menus such as Tracker, Record, and Lap in the Tracker.



Tracker

- From the tracker menu, select "Tracker" by using the toggle buttons ③ and ④, and then press button ① to enter the Tracker.
- Tracker will show the travel time, distance, pace, and lap count by using GPS while outdoors, and save the data.



- From the Tracker mode, press button ② to go the sub menu screen.

- Resume** Return to the Tracker mode
- Stop** Return to the main menu screen
- TrackBack** Repeat a path or to return to your starting point on the same path. The dot marks your position and the line shows the routes you passed



Sub Menu

TrackBack

Record

- From the tracker menu, select “Record” by using the toggle buttons ③ and ④, and then press button ① to view the record list. Press button ② to return the previous screen.
 - From the record list, select one record by using the toggle buttons ③ and ④, and then press button ① to view the record in detail. There are 4 sub menus such as **Detail, Pace, Altitude, and Track** in the record screen.
- When you want to return to the record list, press button ②.



1. Select 'Record' from the menu with buttons ③ and ④.
2. Press ① to view the record list.

1. Select one record from the list with buttons ③ and ④.
2. Press ① to view the record in detail.

Sub Menu

Detail

- (1) Time : Travel time
- (2) Dist : Distance
- (3) Pace : Time/km
- (4) Lap : Lap count



Pace

- (1) AVG: Average pace
- (2) MAX: Maximum pace
- (3) MIN: Minimum pace



Altitude

- (1) AVG: Average
- (2) MAX: Maximum
- (3) MIN: Minimum



Track

- The route you passed
- ③ : Zoom In
 - ④ : Zoom Out



Lap

- From the tracker menu, select “Lap” by using the toggle buttons ③ and ④, and then press button ① to change the distance per lap. Press button ② to return the previous screen.
- From the list of laps, select your preferred lap by using the toggle buttons ③ and ④, and then press button ① to confirm your selection. Press button ② to cancel your selection and return the previous screen.



1. Select 'Lap' from the menu with buttons ③ and ④.
2. Press ① to change the lap.

1. Select one lap from the list with buttons ③ and ④.
2. Press ① to confirm your selection.

SETTINGS

Changing your preferred settings

- From the main menu screen, use toggle buttons ③ and ④ to get to the Settings icon and then press button ① to enter Settings.
- You can change or view the settings of [Display](#), [Clock](#), [Units](#), [Language](#), and [About](#).
- On Settings menu, press button ① to confirm your selection, and Press button ② to cancel it and return to the previous screen.



Display



- Color Theme : Sets the color for the screen.
 - ① White : Light background / Dark text
 - ② Black : Dark background / Light text
- Orientation : Sets the screen orientation
 - ① Normal : Default orientation
 - ② Flipped : Invert the orientation

Unit

- Sets the unit for distance.(Meter/Yard)



Clock

- Sets the date, time, time format(12/24hour), and DST.



Language

- Selects the language among English, French, Spanish, Deutsch, Italian, Korean, Japanese, Chinese.

About

- View the device Information.
(Serial Number, Firmware version etc)



Warranty

GolfBuddy products come with a limited warranty against defects in materials and workmanship when used under normal consumer use for a period of one (1) year ("Limited Warranty").

The Limited Warranty begins to run from the date of original retail purchase. GolfBuddy, as its sole and absolute discretion, shall either (i) replace or repair the defective part(s) or the unit with a new or reconditioned part(s), or (ii) issue a credit for the parts or products that are covered under the Limited Warranty.

To obtain warranty repair service, visit <http://help.golfbuddyglobal.com> or email GolfBuddy technical support at support@golfbuddyglobal.com to obtain a Return Authorization Number.

All returned products must be accompanied by an original purchase receipt and the Return Authorization Number.

Any products that are returned without the requisite information shall be returned at the purchaser's cost and expense.

FCC Statement (USA)

1. NOTE: This equipment has been tested and found to comply with the limits for a Class B digital device, pursuant to part 15 of the FCC Rules.

These limits are designed to provide reasonable protection against harmful interference in a residential installation.

This equipment generates uses and can radiate radio frequency energy and, if not installed and used in accordance with the instructions, may cause harmful interference to radio communications.

However, there is no guarantee that interference will not occur in a particular installation.

If this equipment does cause harmful interference to radio or television reception, which can be determined by turning the equipment off and on, the user is encouraged to try to correct the interference by one or more of the following measures:

- Reorient or relocate the receiving antenna.
- Increase the separation between the equipment and receiver.
- Connect the equipment into an outlet on a circuit different from that to which the receiver is connected.
- Consult the dealer or an experienced radio/TV technician for help

2. Changes or modifications not expressly approved by the party responsible for compliance could void the user's authority to operate the equipment.

3. This device complies with Part 15 of the FCC Rules. Operation is subject to the following two conditions:

- (1) This device may not cause harmful interference, and
- (2) This device must accept any interference received, including interference that may cause undesired operation.