

Golf Buddy® VOICE X



Quick Start Guide

www.golfbuddyglobal.com

VER.1.0.1

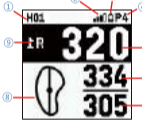
DEVICE OVERVIEW

Button Overview



Keys	Function
1	Main/Menu button: select between Golf Mode, Pedometer, Tracker, and Settings. Main/Power Button: press and hold to turn the device on/off.
2	Back/Exit button
3	Toggle buttons: choose between menu options, change holes, and settings.
4	Voice button: Select during play to hear the voice feature.

Screen Description



- | | | | |
|---|-------------------------------------|---|------------------------------------|
| 1 | Hole Number | 6 | Distance to the back of the green |
| 2 | Satellite indicator | 7 | Distance to the front of the green |
| 3 | Battery indicator | 8 | Dynamic Green View |
| 4 | Par info | 9 | Left/Right Green Selection |
| 5 | Distance to the center of the green | | |

Menu Overview



Menu	Description
	Golf Mode
	Bluetooth Setting
	Tracker (GPS Odometer)
	Settings (Display, Clock, Unit, Language, About)

VOICE X

Settings

Display	Color Theme, Orientation
Clock	Date, Time, Time format
Units	Meter / Yard
Language	Multi language
About	Information(Device, S/N etc.)

GETTING STARTED

Power On/Off

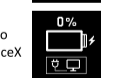
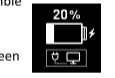
- Press and Hold button 1 for 3 seconds to turn the VOICEX ON/OFF.
- After Power-on, 4 icons will be displayed on screen.
- Golf Play Mode will start automatically 20 seconds after power-on.
- If you select another menu option before Golf Mode starts automatically, Golf Mode will not start. You will have to start Golf Mode manually by selecting it from the menu later on.

Charging

- When power gets critically low, all functions are disabled and "LOW POWER" message will be displayed.
- Plug the USB cable into any standard USB Power Adapter. Then plug the USB power adapter into an electric socket. This USB cable is compatible with USB ports found on computers, laptops, automobiles, or standard 5V AC USB chargers.
- Plug the Micro USB cable into the Micro USB socket of the VoiceX. Then the screen shown in the image to the right will display when the device is connected to the USB charging cable. This screen indicates USB data connection as well as battery charging.
- The battery indicator will display while charging, and will display 100% when fully charged. Then, remove the Micro USB cable from device.
- If your VoiceX battery display is empty when connected and shows a low-battery icon, it indicates that a full charge has not been achieved. Check your connection to make sure the cable is properly aligned with the connector, and then allow the VoiceX to charge until the battery shows 100%.

*** IMPORTANT : DO NOT USE QUICK-CHARGER AC ADAPTERS TO CHARGE THE VOICEX. DOING SO MAY CAUSE DAMAGE AND VOID THE WARRANTY. AC ADAPTERS SHOULD NOT EXCEED 5.0V. CHECK YOUR AC ADAPTER'S RATING PRIOR TO USING.**

VOICE X



GETTING STARTED

Connecting VOICEX to the mobile phone

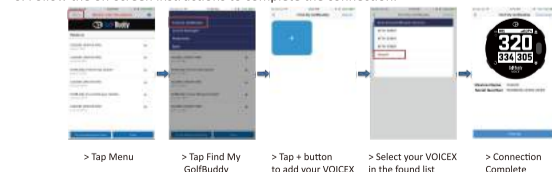
- GolfzonDeca is not responsible for the loss, interception, or misuse of data sent or received via Bluetooth.
- Always ensure that you share and receive data with devices that are trusted and properly secured. If there are obstacles between the devices, the operating distance may be reduced.
- Some devices, especially those that are not tested or approved by the Bluetooth SIG, may be incompatible with your device.
- Do not use the Bluetooth feature for illegal purposes (for example, pirating copies of files or illegally tapping communications for commercial purposes).
- GolfzonDeca is not responsible for the repercussion of illegal use of the Bluetooth feature.

VOICE X

On the Bluetooth Setting menu,
1. Turn the Power and Visibility on and your VoiceX will automatically enter pairing mode.

Mobile phone

- Open the GolfBuddy Smart App on your mobile phone.
- Log In and Select **Find My GolfBuddy** in the menu.
- Tap to see a list of compatible devices available to add.
- Tap your VOICEX among the found device list.
- Follow the on-screen instructions to complete the connection.

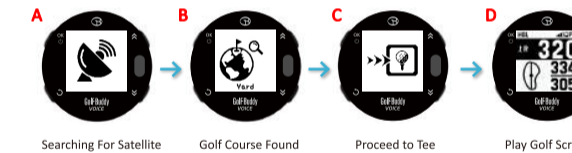


VOICE X

BASIC OPERATION

Play Golf mode

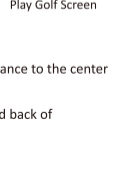
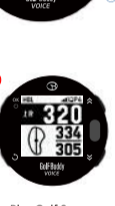
- From the main menu screen, use toggle buttons 3 and 4 to get to the Golf Mode icon and then press button 1 to enter Golf Mode. After Play Golf is activated, screen A is displayed.
- Once the golf club is found, screen C will be shown to proceed to the Tee Box.
- Once you arrive at the Tee Box, screen D will be displayed. and distances will be shown.



Voice information for Distances to the Green

- In Golf Mode, when you press button 5, the VoiceX will verbally tell you distance to the center of the green.
- Press and hold button 5 and the VoiceX will tell you distance to the front and back of the green.

VOICE X

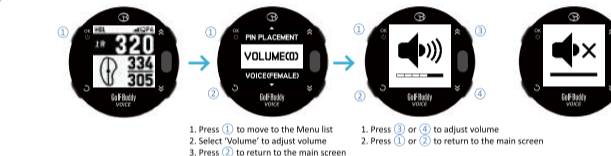


BASIC OPERATION

Voice Control

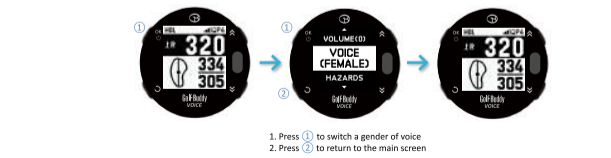
Adjusting the volume

- From Golf Mode, press button 1 to go to the full menu screen.
- Select "VOLUME" by using the toggle buttons 3 and 4 and then press button 1 to go to the Volume controlling screen.
- Use toggle buttons 3 or 4 to control volume or set it to mute.



Selecting a gender of voice

- You can choose a gender of voice (FEMALE or MALE) by selecting "VOICE" and pressing button 1.



VOICE X

Warranty

GolfBuddy products come with a limited warranty against defects in materials and workmanship when used under normal consumer use for a period of one (1) year ("Limited Warranty").

The Limited Warranty begins to run from the date of original retail purchase. GolfBuddy, as its sole and absolute discretion, shall either (i) replace or repair the defective part(s) or the unit with a new or reconditioned part(s), or (ii) issue a credit for the parts or products that are covered under the Limited Warranty. To obtain warranty repair service, visit <http://help.golfbuddyglobal.com> or email GolfBuddy technical support at support@golfbuddyglobal.com to obtain a Return Authorization Number. All returned products must be accompanied by an original purchase receipt and the Return Authorization Number. Any products that are returned without the requisite information shall be returned at the purchaser's cost and expense.

FCC Statement (USA)

1. NOTE: This equipment has been tested and found to comply with the limits for a Class B digital device, pursuant to part 15 of the FCC Rules. These limits are designed to provide reasonable protection against harmful interference in a residential installation. This equipment generates uses and can radiate radio frequency energy and, if not installed and used in accordance with the instructions, may cause harmful interference to radio communications. However, there is no guarantee that interference will not occur in a particular installation. If this equipment does cause harmful interference to radio or television reception, which can be determined by turning the equipment off and on, the user is encouraged to try to correct the interference by one or more of the following measures:

- Reorient or relocate the receiving antenna.
- Increase the separation between the equipment and receiver.
- Connect the equipment into an outlet on a circuit different from that to which the receiver is connected.
- Consult the dealer or an experienced radio/TV technician for help

2. Changes or modifications not expressly approved by the party responsible for compliance could void the user's authority to operate the equipment.

3. This device complies with Part 15 of the FCC Rules. Operation is subject to the following two conditions:

- (1) This device may not cause harmful interference, and
- (2) This device must accept any interference received, including interference that may cause undesired operation.

VOICE X

ADVANCED OPERATION

Casting

"GolfBuddy Casting" is the ability to send (cast) the player's yardages, and other golf GPS features from their Voice X to an iOS or Android phone, tablet, or smartwatch screen wirelessly when synced via Bluetooth through the GolfBuddy Cast App. Once set up, "GolfBuddy Casting" will be available with just a simple press of a button; allowing the player to toggle, display, and control audio from their smart device.

"GolfBuddy Casting" has enhanced the Golf GPS experience by creating an affordable and simple way to turn any smart device into a Golf GPS system. Yardages can now be delivered with bigger visuals and better sound without draining the battery life of smart devices. With this technology, the player can choose how they want to display their most accurate yardages.

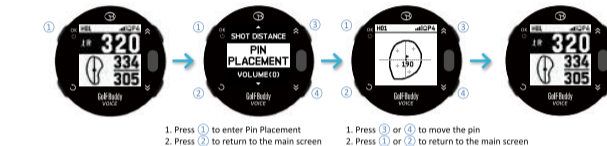


VOICE X

ADVANCED OPERATION

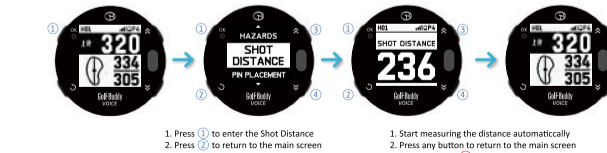
Pin Placement

- From Golf Mode, press button ① to go to the menu list. With toggle buttons ③ and ④ find the "Pin Placement", then press button ① to go to "Dynamic Green View" screen.
- From Dynamic Green View screen, you can change the placement of the pin with toggle buttons ③ and ④.
- After pin placement, you can return to the golf screen by pressing button ① or ②.



Measuring Shot Distance

- From Golf Mode, press button ① to show the full menu, then with toggle buttons ③ and ④ go to the "Shot Distance" and select by pressing button ①.
- Press and hold button ④ to reset the distance.
- From Shot Distance Mode, the VOICE X will return to the main screen by pressing any button.

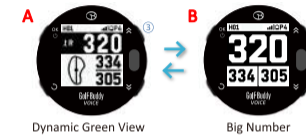


VOICE X

BASIC OPERATION

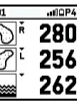
Switching the display mode

- Press and hold the buttons ③ to switch between main screen A and B shown below.



Target / Hazard Information

- Select "HAZARDS" by using the toggle buttons ③ and ④. Press button ① to view Hazard information. Or, you can enter the "HAZARDS" by pressing and holding button ④ for 3 seconds from Golf Mode.
- When more than 3 hazards are available, use toggle buttons ③ and ④ to view the next hazard.



1. Press ① to enter the Hazards
2. Press ② to return to the main screen
3. Press ③ or ④ to view other Hazards
4. Press ① or ② to return to the main screen

1. Press ③ or ④ to view other Hazards
2. Press ① or ② to return to the main screen

3. Press and Hold ④ to reset the distance

1. Press ① to enter the Hazards
2. Press ② to return to the main screen
3. Press ③ or ④ to view other Hazards
4. Press ① or ② to return to the main screen

1. Press ③ or ④ to view other Hazards
2. Press ① or ② to return to the main screen

3. Press and Hold ④ to reset the distance

1. Press ① to enter the Hazards
2. Press ② to return to the main screen
3. Press ③ or ④ to view other Hazards
4. Press ① or ② to return to the main screen

1. Press ③ or ④ to view other Hazards
2. Press ① or ② to return to the main screen

3. Press and Hold ④ to reset the distance

1. Press ① to enter the Hazards
2. Press ② to return to the main screen
3. Press ③ or ④ to view other Hazards
4. Press ① or ② to return to the main screen

1. Press ③ or ④ to view other Hazards
2. Press ① or ② to return to the main screen

3. Press and Hold ④ to reset the distance

1. Press ① to enter the Hazards
2. Press ② to return to the main screen
3. Press ③ or ④ to view other Hazards
4. Press ① or ② to return to the main screen

1. Press ③ or ④ to view other Hazards
2. Press ① or ② to return to the main screen

3. Press and Hold ④ to reset the distance

1. Press ① to enter the Hazards
2. Press ② to return to the main screen
3. Press ③ or ④ to view other Hazards
4. Press ① or ② to return to the main screen

1. Press ③ or ④ to view other Hazards
2. Press ① or ② to return to the main screen

3. Press and Hold ④ to reset the distance

1. Press ① to enter the Hazards
2. Press ② to return to the main screen
3. Press ③ or ④ to view other Hazards
4. Press ① or ② to return to the main screen

1. Press ③ or ④ to view other Hazards
2. Press ① or ② to return to the main screen

3. Press and Hold ④ to reset the distance

1. Press ① to enter the Hazards
2. Press ② to return to the main screen
3. Press ③ or ④ to view other Hazards
4. Press ① or ② to return to the main screen

1. Press ③ or ④ to view other Hazards
2. Press ① or ② to return to the main screen

3. Press and Hold ④ to reset the distance

1. Press ① to enter the Hazards
2. Press ② to return to the main screen
3. Press ③ or ④ to view other Hazards
4. Press ① or ② to return to the main screen

1. Press ③ or ④ to view other Hazards
2. Press ① or ② to return to the main screen

3. Press and Hold ④ to reset the distance

1. Press ① to enter the Hazards
2. Press ② to return to the main screen
3. Press ③ or ④ to view other Hazards
4. Press ① or ② to return to the main screen

1. Press ③ or ④ to view other Hazards
2. Press ① or ② to return to the main screen

3. Press and Hold ④ to reset the distance

1. Press ① to enter the Hazards
2. Press ② to return to the main screen
3. Press ③ or ④ to view other Hazards
4. Press ① or ② to return to the main screen

1. Press ③ or ④ to view other Hazards
2. Press ① or ② to return to the main screen

3. Press and Hold ④ to reset the distance

1. Press ① to enter the Hazards
2. Press ② to return to the main screen
3. Press ③ or ④ to view other Hazards
4. Press ① or ② to return to the main screen

1. Press ③ or ④ to view other Hazards
2. Press ① or ② to return to the main screen

3. Press and Hold ④ to reset the distance

1. Press ① to enter the Hazards
2. Press ② to return to the main screen
3. Press ③ or ④ to view other Hazards
4. Press ① or ② to return to the main screen

1. Press ③ or ④ to view other Hazards
2. Press ① or ② to return to the main screen

3. Press and Hold ④ to reset the distance

1. Press ① to enter the Hazards
2. Press ② to return to the main screen
3. Press ③ or ④ to view other Hazards
4. Press ① or ② to return to the main screen

1. Press ③ or ④ to view other Hazards
2. Press ① or ② to return to the main screen

3. Press and Hold ④ to reset the distance

1. Press ① to enter the Hazards
2. Press ② to return to the main screen
3. Press ③ or ④ to view other Hazards
4. Press ① or ② to return to the main screen

1. Press ③ or ④ to view other Hazards
2. Press ① or ② to return to the main screen

3. Press and Hold ④ to reset the distance

1. Press ① to enter the Hazards
2. Press ② to return to the main screen
3. Press ③ or ④ to view other Hazards
4. Press ① or ② to return to the main screen

1. Press ③ or ④ to view other Hazards
2. Press ① or ② to return to the main screen

3. Press and Hold ④ to reset the distance

1. Press ① to enter the Hazards
2. Press ② to return to the main screen
3. Press ③ or ④ to view other Hazards
4. Press ① or ② to return to the main screen

1. Press ③ or ④ to view other Hazards
2. Press ① or ② to return to the main screen

3. Press and Hold ④ to reset the distance

1. Press ① to enter the Hazards
2. Press ② to return to the main screen
3. Press ③ or ④ to view other Hazards
4. Press ① or ② to return to the main screen

1. Press ③ or ④ to view other Hazards
2. Press ① or ② to return to the main screen

3. Press and Hold ④ to reset the distance

1. Press ① to enter the Hazards
2. Press ② to return to the main screen
3. Press ③ or ④ to view other Hazards
4. Press ① or ② to return to the main screen

1. Press ③ or ④ to view other Hazards
2. Press ① or ② to return to the main screen

3. Press and Hold ④ to reset the distance

1. Press ① to enter the Hazards
2. Press ② to return to the main screen
3. Press ③ or ④ to view other Hazards
4. Press ① or ② to return to the main screen

1. Press ③ or ④ to view other Hazards
2. Press ① or ② to return to the main screen

3. Press and Hold ④ to reset the distance

1. Press ① to enter the Hazards
2. Press ② to return to the main screen
3. Press ③ or ④ to view other Hazards
4. Press ① or ② to return to the main screen

1. Press ③ or ④ to view other Hazards
2. Press ① or ② to return to the main screen

3. Press and Hold ④ to reset the distance

1. Press ① to enter the Hazards
2. Press ② to return to the main screen
3. Press ③ or ④ to view other Hazards
4. Press ① or ② to return to the main screen

1. Press ③ or ④ to view other Hazards
2. Press ① or ② to return to the main screen

3. Press and Hold ④ to reset the distance

1. Press ① to enter the Hazards
2. Press ② to return to the main screen
3. Press ③ or ④ to view other Hazards
4. Press ① or ② to return to the main screen

1. Press ③ or ④ to view other Hazards
2. Press ① or ② to return to the main screen

3. Press and Hold ④ to reset the distance

1. Press ① to enter the Hazards
2. Press ② to return to the main screen
3. Press ③ or ④ to view other Hazards
4. Press ① or ② to return to the main screen

1. Press ③ or ④ to view other Hazards
2. Press ① or ② to return to the main screen

3. Press and Hold ④ to reset the distance

1. Press ① to enter the Hazards
2. Press ② to return to the main screen
3. Press ③ or ④ to view other Hazards
4. Press ① or ② to return to the main screen

1. Press ③ or ④ to view other Hazards
2. Press ① or ② to return to the main screen

3. Press and Hold ④ to reset the distance

1. Press ① to enter the Hazards
2. Press ② to return to the main screen
3. Press ③ or ④ to view other Hazards
4. Press ① or ② to return to the main screen

1. Press ③ or ④ to view other Hazards
2. Press ① or ② to return to the main screen

3. Press and Hold ④ to reset the distance

1. Press ① to enter the Hazards
2. Press ② to return to the main screen
3. Press ③ or ④ to view other Hazards
4. Press ① or ② to return to the main screen

1. Press ③ or ④ to view other Hazards
2. Press ① or ② to return to the main screen

3. Press and Hold ④ to reset the distance

1. Press ① to enter the Hazards
2. Press ② to return to the main screen
3. Press ③ or ④ to view other Hazards
4. Press ① or ② to return to the main screen

1. Press ③ or ④ to view other Hazards
2. Press ① or ② to return to the main screen

3. Press and Hold ④ to reset the distance

1. Press ① to enter the Hazards
2. Press ② to return to the main screen
3. Press ③ or ④ to view other Hazards
4. Press ① or ② to return to the main screen

1. Press ③ or ④ to view other Hazards
2. Press ① or ② to return to the main screen

3. Press and Hold ④ to reset the distance

1. Press ① to enter the Hazards
2. Press ② to return to the main screen
3. Press ③ or ④ to view other Hazards
4. Press ① or ② to return to the main screen

1. Press ③ or ④ to view other Hazards
2. Press ① or ② to return to the main screen

3. Press and Hold ④ to reset the distance

1. Press ① to enter the Hazards
2. Press ② to return to the main screen
3. Press ③ or ④ to view other Hazards
4. Press ① or ② to return to the main screen

1. Press ③ or ④ to view other Hazards
2. Press ① or ② to return to the main screen

3. Press and Hold ④ to reset the distance

1. Press ① to enter the Hazards
2. Press ② to return to the main screen
3. Press ③ or ④ to view other Hazards
4. Press ① or ② to return to the main screen

1. Press ③ or ④ to view other Hazards
2. Press ① or ② to return to the main screen

3. Press and Hold ④ to reset the distance

1. Press ① to enter the Hazards
2. Press ② to return to the main screen
3. Press ③ or ④ to view other Hazards
4. Press ① or ② to return to the main screen

1. Press ③ or ④ to view other Hazards
2. Press ① or ② to return to the main screen

3. Press and Hold ④ to reset the distance

1. Press ① to enter the Hazards
2. Press ② to return to the main screen
3. Press ③ or ④ to view other Hazards
4. Press ① or ② to return to the main screen

1. Press ③ or ④ to view other Hazards
2. Press ① or ② to return to the main screen

3. Press and Hold ④ to reset the distance

1. Press ① to enter the Hazards
2. Press ② to return to the main screen
3. Press ③ or ④ to view other Hazards
4. Press ① or ② to return to the main screen

1. Press ③ or ④ to view other Hazards
2. Press ① or ② to return to the main screen

3. Press and Hold ④ to reset the distance

1. Press ① to enter the Hazards
2. Press ② to return to the main screen
3. Press ③ or ④ to view other Hazards
4. Press ① or ② to return to the main screen

1. Press ③ or ④ to view other Hazards
2. Press ① or ② to return to the main screen

3. Press and Hold ④ to reset the distance

1. Press ① to enter the Hazards
2. Press ② to return to the main screen
3. Press ③ or ④ to view other Hazards
4. Press ① or ② to return to the main screen

1. Press ③ or ④ to view other Hazards
2. Press ① or ② to return to the main screen

3. Press and Hold ④ to reset the distance

1. Press ① to enter the Hazards
2. Press ② to return to the main screen
3. Press ③ or