

■ Changing the Distance Measurement Mode (Yards/Meters)



Press and hold the button on the Play Mode Screen to change between Yards and Meters.

Advanced Operations

■ Dynamic Green View

Press the button to view the Dynamic Green View. The shape of the green will rotate with your angle of approach, showing the real front, center and back distances to the green. The screen also provides the hole number, par information, satellite signal strength, and left/right green information (if available).



■ Shot Distance Measuring Mode

Press the button to initiate the Distance Measuring feature. Press and hold the button for 3 seconds to start measuring. Once you have arrived at the desired location, press the button to finish measuring and you can view the measured distance.



■ Changing Holes

Manual hole selection: Press the button and the button at the same time to bring up the hole selection. Then use the buttons to navigate through the hole numbers. Press button to select the hole.



Previous hole selection: Press the and the buttons at the same time go back to the previously played hole.

■ Time Setting

Press and hold the button to see the current time. To change the time, press and hold the button while you are in the Time Mode. Use the buttons to change to desired hour.

Press the button to confirm the time. Minutes will be set automatically through the GPS signal once available.

■ Flip Screen Mode

Press and hold the and button at the same time to flip the display screen upside down (180 degrees). Use the same procedure to flip the screen back to its normal view. This feature is for players who want to see the screen while wearing it on a belt, without pulling the device off the belt.



■ Troubleshooting

An emergency reboot is required if you experience the following:

- Incorrect yardages/distances (check that you have the correct Distance Measurement Mode, Y or M)
- No sound or irregular sounds
- Irregular symbols or stripes on the display

■ Emergency Reboot

Turn unit off. Connect the USB data cable to your computer. Connect the USB cable to the unit while holding down the button and the button at the same time. When the screen starts to blink, release the two buttons. Once you reach SYNC screen, disconnect the USB cable from the unit. Turn on the device.



Note: If issues persist or you need assistance, please contact our Customer Service department at 888.296.1428.

■ Software Updates

Visit our website www.golfbuddyglobal.com and download the GB Course Manager to access the latest firmware & course updates for your GolfBuddy VOICE 2.

■ What's Included :



Golfbuddy VOICE 2



USB Data Cable



Quick Start Guide

VER. 1.6,0.4

GolfBuddy®

VOICE 2

Quick Start Guide

GolfBuddy VOICE 2



Thank you for choosing GolfBuddy!
The GolfBuddy VOICE 2 is an easy-to-use talking GPS for golfers of all skill levels. It provides you with accurate golf course distance information, via audio or display, to enhance your golfing experience.

Note: Remove sticker from the front screen of the VOICE 2 unit prior to use.

Overview of your GolfBuddy VOICE 2



Screen Description



- 08** Hole No. If there is a left or right green, the letter L or R will appear next to the hole.
- M** Meter. Default distances shown in yards. If switched to meters an "M" icon will appear.
- 189** Distance to the center of the green
- 205** Distance to the back of the green
- 174** Distance to the front of the green
- Battery level indicator

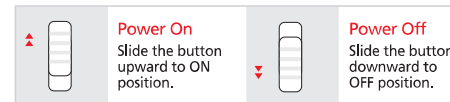
Charging the Unit

Connect your GolfBuddy VOICE 2 to a power outlet using the charging data cable (included) and any USB charger (not included). You can also charge the unit by connecting the VOICE 2 to your computer's USB port.

Basic Operations

Power On/Off

Once you are at the course, power on the unit and the VOICE 2 will automatically search for the nearest golf course.

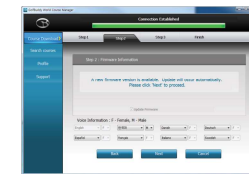


Language Selection

As soon as you power on the unit, press and hold the button and the button simultaneously until you see the language selection screen. Use the volume buttons to select your language, then press the button to confirm. Additional languages are also available for download through the GolfBuddy Course Manager program.



'M' icon indicates Male voice is selected. (Please note: When the Female voice is selected, it will only show the language icon without the 'M' icon. Changing from Male to Female voice and vice versa can only take place through the GolfBuddy Course Manager program.)



When you connect your device to the GolfBuddy Course Manager program, the following screen appears and you can choose between a male and female voice option. If you select the "M" in combo box, the male voice will be selected.

If you select the "F" in combo box, the female voice will be selected.

Voice Information for Distances to the Green



On the Play Mode Screen, press the button and the VOICE 2 will tell you the distance to the center of the green. Press and hold the button for distances to the front and back of the green.

Volume Control



Mute/Unmute

Press the and buttons at the same time to mute the voice feature. To unmute, press either the or button.

Switching to Left/Right Green



Press and hold the button while on the play screen to switch between left or right green (if available).