

BagBoy®

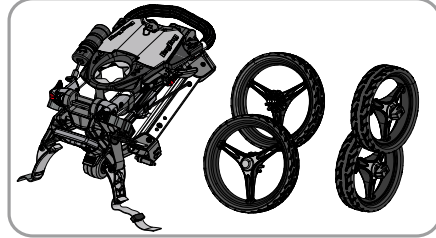
QUAD XL Instructions

If any items are missing please contact us 1-800-955-2269
Warranty information is available at www.bagboy.com



English

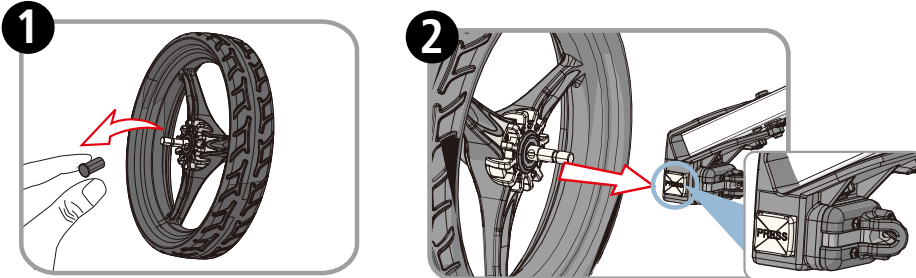
We congratulate you on your purchase of a Bag Boy QUAD XL golf cart and appreciate your confidence in our products. Please read the following important information before the first use. The QUAD XL golf cart will come partially assembled.



Remove the cart from the carton and check that the following items are included:

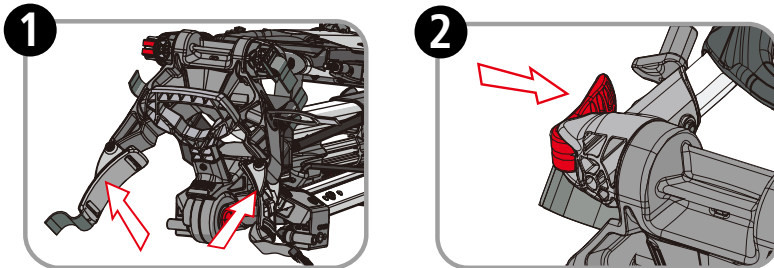
- QUAD XL frame
- 2 Rear wheels
- 2 front wheels
- 1 Umbrella holder (optional equipment)
- 1 Allen key

TO ASSEMBLE THE QUAD XL



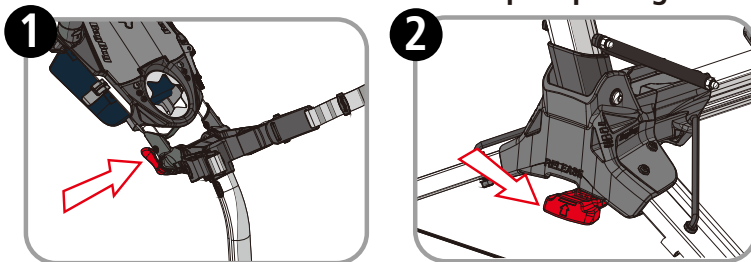
1. Remove the black plastic cap from the rear wheel axles.
2. Attach the 4 rear and front wheels by pressing the "PRESS" button and inserting the axle of the wheels into the cart until the wheel "Clicks" into place. To remove the front and rear wheels: Locate and press the "PRESS" button and the wheel can be removed.

TO UNFOLD THE QUAD XL: Simple 2 step process.



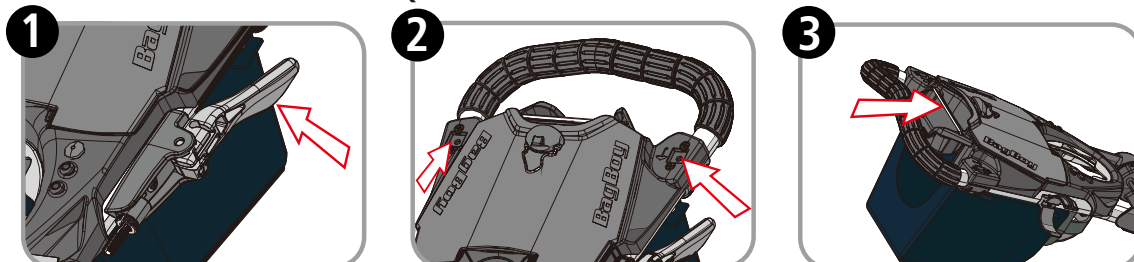
1. While the cart is resting on the ground hold both sides of the upper bag brackets and lift the QUAD XL until the cart "Clicks" open.
2. Flip the red Handle Lock release lever. Adjust the handle to the desired and comfortable height. Close the "LOCK" lever to lock the handle into position.

TO FOLD THE QUAD XL: The wheels can remain on the cart, OR the wheels can be removed to create an ultra compact package.



1. Unlock the handle release lever and lower the handle into a closed position.
2. Lift RED "Release" lever located below the main pivot point of the cart, rotate the upper frame at the same time to initiate the fold.

OTHER KEY FEATURE TO THE QUAD XL



1. Brake: Located on the side of the handlebar is a Brake Lever. This will lock a rear wheel. **DO NOT PUSH THE CART WHILE THE BRAKE IS ENGAGED.**
2. Optional Equipment: Umbrella holder. Can be installed in either left side or right side location marked with an umbrella symbol.
3. Located in the back of the scorecard holder is a tray for Smartphones or GPS units. The bungee is in place to hold the device in place. **CAUTION: this bungee does not LOCK the device in place. Oversized devices should not be placed in this holder.**
NOTE: REMOVE device before folding the cart