

TETRA™

HEAR THE HUNT

AmpPods Multi-Pursuit

At TETRA™, we are hunters, we are hearing scientists, and we don't like to read instructions. Hence, this manual is intentionally written for your reading pleasure. We also recommend you check out our product use and care instructions at www.tetrahearing.com. Of course, we do want you to read the legal disclaimers and warnings here. (Our attorney made us say that).

Welcome to the TETRA Hearing family.

We are passionate about helping you Hear the Hunt™.

Congratulations on your purchase of TETRA AmpPods Series hearing gear. Please read these instructions to become familiar with your devices. TETRA AmpPods products are discrete, comfortable, day-long hearing solutions designed specifically for the enhancing animal sounds while hunting. The hunter's sound scape is brought to life with our patent-pending Specialized Target Optimization™ (STO) algorithm to maximize hearing of your specific hunting environment. With STO you will better hear and locate the game you are hunting, more accurately, and from farther away.



ALPHASHIELD
COMPRESSION

WARNINGS:

TETRA AmpPods ARE NOT ENGINEERED TO BE A HEARING PROTECTION PRODUCT. TETRA AmpPods are premium hearing enhancement devices with patent-pending Specialized Target Optimization (STO). To help reduce the impact of loud noise, these devices are designed with AlphaShield Compression™ technology to shut off instantly with a gunshot or other loud sound. However, because these devices do not create a total and tight seal in the ear, they are NOT designed to be protection for repetitive shooting. For such needs, we recommend the TETRA AlphaShield Series.

Improper fit of this device will reduce its effectiveness. Consult the enclosed instructions for proper fit.

Individuals exposed to loud occupational or recreational noise, should have annual hearing checks to monitor their hearing over time.

These devices must be worn and maintained in accordance with instructions. Cleaning regularly and paying close attention to maintenance ensures best performance. If tips are worn or torn, or do not feel as tight or comfortable as previously, replace the tips immediately. Replacement tips are available at tetrahearing.com.

1. Battery Instructions

Each device uses a 10A battery.

TETRA recommends using brand-name batteries as others may vary in size. While TETRA devices are not hearing aids, they do use the same type of battery commonly used in hearing aids. Such batteries are designed to have a long shelf life, but they can go “stale” if on the shelf for a long time. Be sure to check the expiration date.

Pulling off the plastic tab activates the battery. Do not pull the tab off until you need to use the battery. Check to make sure no adhesive from the plastic sticker is remaining on the battery blocking the activation holes.

2. Battery Life

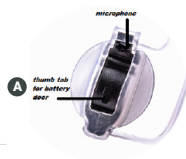
With daily use, the battery should last 7-10 days. With intermittent use, batteries may last for up to a month once activated. Even if not used, once the battery is activated, it has a limited life. We recommend new batteries if the device has not been used in several weeks.

Low Battery Indicator: Haven't used your TETRA devices in a few weeks and aren't sure how old your batteries are? Don't worry, we've got your back. All TETRA devices include a low battery indicator. A warning of three double beeps every eight minutes, or a voice prompt stating “low battery” indicates that the battery needs to be replaced.

TETRA Tip: Once you remove the tab, let the battery sit for a couple minutes before inserting it into the device. This can help your battery last longer.

3. Battery Installation

Because of their small size, we recommend that you insert or remove batteries on a table, desk, or some other safe place to reduce the risk of dropping the instrument or battery.



STEP 1

Using your fingernail, gently pull up on the battery door tab **A** until the door swings open. Do not over-extend the battery door as damage will occur.

STEP 2

Note: The rounded edge of the battery **B** is negative, and the completely flat side is positive. The flat side (+) needs to be on the door's (+) side.



With the red (+) of the battery door facing you **C**, hold the battery with the rounded edge positioned towards the back, gently push the battery straight in. The lower part of the battery door will flex to accept the battery.

STEP 3

With the battery installed, gently close the battery door. The device should turn on immediately. To turn the device off and to prevent battery drain when not in use, gently pull the battery door open, or remove the battery entirely for storage.



TETRA Tip: When closing the battery door, it should go into the device **VERY** easily. If you must push hard or feel resistance, do not force it. The battery is likely placed incorrectly in the door. Resist the urge to force it!

STEP 4

To remove the battery: With the battery red door (+) facing you, tilt the bottom of the battery towards you. This will allow the battery to move from under the front lip.

Please dispose of used batteries in an environmentally friendly way. Do not place batteries in your mouth. If swallowed, contact your physician immediately or call the

National Battery Hotline at 1-202-625-3333.

4. Placement in the ear

STEP 1

Select right or left ear. We ship the products with color-coded sleeves. The red sleeved device fits the right ear, the clear sleeved device is for the left **D**.



STEP 2

Place the sleeved device into the ear canal.



STEP 3

Press the D-ring **E** into the concha of the ear **F**. Be sure that the Helix portion of the D-ring is seated properly and fully in the concha of the ear. Nothing should be sticking out as shown here.

TETRA Tip: Using a mirror may be helpful the first few times you put your devices into your ears properly.

STEP 4

Pull back on the back of the ear and gently press the device into the canal to ensure a good fit.

When inserting the device for the first time, there may be a whistle. Don't worry, this is completely normal, and it will stop once the device is properly seated in the ear canal. If that whistle is bothersome, we suggest that you practice without the battery in the device until you have perfected placement in your ear.

TETRA Tip: If your TETRA device is in the ear and the device whistles, then something is not correct. Check the following: 1. Make sure your ear canal is not blocked with wax. 2. Make sure the sleeve is not worn and in need of replacement. 3. Make sure the TETRA device is fully seated in the canal.

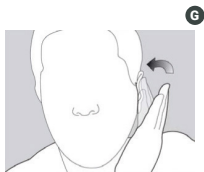
REMOVAL

To remove, grasp the device by the D-ring and gently remove from ear. Open the battery door to turn the device off and to save on battery life. Opening the battery door allows internal moisture to evaporate, which keeps the electronics working well.

Note: Do not pull on the battery door at any point. This can damage the battery door

5. Program Selection

Your TETRA AmpPods Multi-Pursuit devices are equipped with a revolutionary quick adjust feature. To change the setting, tap **G** the opening of your ear with two quick taps. The AmpPod Multi-Pursuit has up to 6 program settings. When you change the program, you will hear a voice prompt denoting which setting you are in. For example, base programming has Turkey, Turkey Boost, Deer, Deer Boost, Elk Boost and ClearComm™ (Designed for use both hunting and elsewhere where clear hearing for voices is necessary).



Note: the volume level for each program is based off the hearing test you sent in for programming. If it sounds different than you expected, we recommend allowing your ears and brain time to adjust to it. If it continues, please reach out to us for further instructions.

6. Maintenance

EAR WAX MAINTENANCE

- Wax buildup is the number one cause of device problems. It is important to keep your device as clean as possible. Wipe daily after use with a dry cloth, carefully removing any traces of wax and debris.

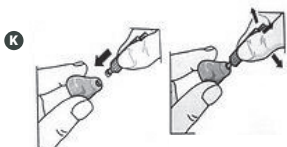
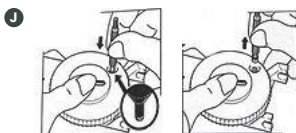
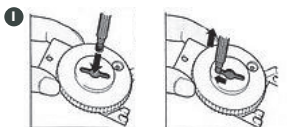
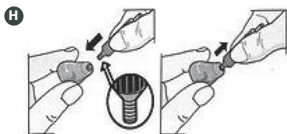
- AmpPods are designed with a specialized filter to protect wax from clogging up the sound port. This wax guard contains a tiny screen that prevents wax from entering the hearing device. Wax guards are delicate and must be replaced, not cleaned.

- Given that earwax is natural and common, replace the wax guard on your devices every few months or more frequently as needed. This is easy to do with the wax guard dispenser and changing tool you received with your AmpPods.

- Gently screw in the threaded end **H** of the changing tool into the old wax guard and pull out the old wax guard.

- To dispose of the wax guard, push the changing tool with the old wax guard into the center of the wheel dispenser **I**, and slip off the wax guard by sliding the tool to the side.

- Use the other end of the changing tool to pull out a new wax guard **J** from the dispenser and press it into the sound port **K** of your hearing device.



7. General Maintenance

- . Store in a cool dry place. DO NOT store in bathroom.
- . Keep your devices dry and away from extreme temperatures.
- . Keep your devices away from animals and small children.
- . Take care not to drop devices.
- . Remove devices before using hairspray, perfumes, sunscreen or shaving lotions, as these items can clog or damage your device.
- . If your device stops working, check the battery and wax guard. Make sure the battery is not dead and is inserted correctly.

Reminder: you should not have to force the battery door shut, and once closed, the battery should not be exposed.

- . Always take great care when opening and closing the battery door. Do not carry the device by the battery door. Never pull the door further back than is necessary when inserting or removing battery.
- . Always open the battery door or remove battery entirely from the device while you are not using your TETRA Hearing™ gear. Old batteries can corrode in devices and batteries will run down with door closed.
- . Replacement Sleeves, D-Rings and Wax Guards are available at www.TETRAHEARING.com

IF YOUR DEVICE IS NOT WORKING—REPLACE THE WAX GUARD.

FOR INSTRUCTIONS AND TO LEARN MORE ABOUT OUR STORY AND TECHNOLOGY, PLEASE VISIT WWW.TETRAHEARING.COM



TETRA™

HEAR THE HUNT

WWW.TETRAHEARING.COM

SoundTrack Outdoors, LLC
PO Box 682068 | FRANKLIN, TN 37068

