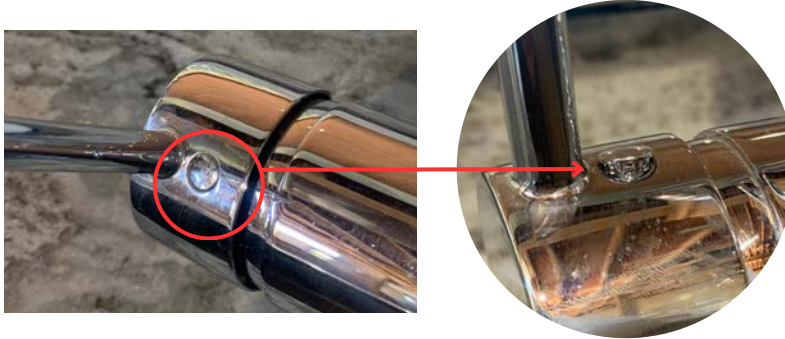


How To Replace Sink Faucet Cartridge

Step One: Turn OFF the water supply.

Step Two: Pry small cover off handle and set aside.



Step Three: Insert a 3/32" Allen wrench and loosen the set screw. No need to remove it completely, only enough to slide off the handle. After removing the handle unscrew the round edge to reveal the brass nut.



Step Four: Unscrew the large brass nut. (Channellock pliers work well for this).

Step Five: Pull out to the cartridge and insert the new one in it's place. Be SURE to replace it with the two extended pieces towards the bottom, like the original one came out.



Step Six: Reverse all steps and enjoy! It is strongly recommended to turn off the water supply before a freeze occurs.