



Create With Us: Toucan Do It

thank you!

Thank you for being part of our class! Remember, these are YOUR cards, and no one is going to compare them to ours. Making substitutions and switching things up is a benefit of working from your crafty space. I will list some specific details to the cards, like what is popped up, but remember you do you and- just have fun!

If you have any questions feel free to email me!
creative-chick@shurkus.com

connect with us:

We would love to see what you create in this class you can use these hashtags so we don't miss it

#LFCreateWithUs
#creativechickclasses

HAPPY CREATING!

Jenn Shurkus & Kelly Marie Alvarez

www.lawnfawn.com
www.shurkus.com

more Lawn Fawn card classes available

www.shurkus.com



more Lawn Fawn Create with Us classes
www.shurk.us/LF-create-with-us

join us!



be inspired!
you can win
a lawn fawn
gift certificate!
lawnfawnatics.com

CREATE WITH US:

TOUCAN DO IT

JULY 10

#LFCREATEWITHUS

Jenn Shurkus & Kelly Marie Alvarez

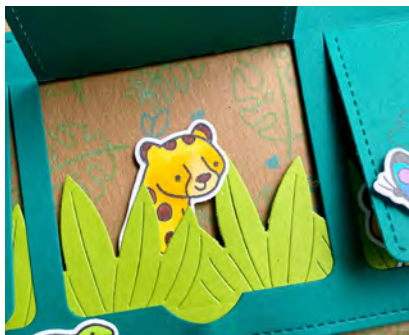
www.lawnfawn.com

www.shurkus.com

Card 1: Toucan Do It



created for lawn fawn by jenn shurkus





created for lawn fawn by jenn shurkus

Lawn Fawn Stamps & Lawn Cuts:

- Toucan Do It, LF2603
- Toucan Do It Lawn Cuts, LF2604
- Slimline Tropical Leaves Border, LF2618
- Small Slimline with Lift the Flaps, LF2358

Other Lawn Fawn Supplies:

- Rainforest Cardstock, LF2085
- Cilantro Cardstock, LF1372
- Paper bag Cardstock, LF1574
- White Cardstock (Neenah Classic Crest 80lb Smooth Solar White), LF1753
- Juice Box Ink Pad, LF925*
- Peacock Ink Pad, LF927*
- Black Licorice Ink Pad, LF868
- Jet Black Ink Pad, LF1302

Recommended Supplies:

- Copics (specific colors listed on coloring guide pages)
- Lawn Fawn Glue Tube, LF1664
- Foam Tape or pop-dots
- Distress Oxide Inks (Mowed Lawn and Peacock Feathers)**

Card Base:

cut to 7" x 8.5", folded to 3.5" x 8.5"

Popped up with foam tape:

- everything under the flaps is adhered flat to the flaps panel, then the whole flap panel is popped up
- the hibiscus flowers and butterflies on the top of the flaps

*we will be stamping sentiments with these purple, teal and black ink pads

** you can substitute these with any green and teal pigment inkpads



Card 1: prep

Before class, it will be helpful if you have the following pieces stamped/die-cut etc. Jenn used Neenah Classic Crest Cover, Solar White 80#, Super Smooth for Copic coloring, card bases, and white layers on cards. Lawn Fawn white cardstock item LF1753 is just that. Jenn also used Lawn Fawn Jet Black ink pad item LF1302 to stamp her images as she will be coloring with Copic markers



- paper bag cardstock 3.5" x 8.5"
- rainforest cardstock die cut with Small Slimline die with lift the flaps LF2358 to measure 3" x 8"
- cilantro cardstock, die cut with Slimline Tropical Leaves Border, LF2618 - then cut with just the Small Slimline die, to trim the bottom and sides. The leaves are approx 1.5" high.
- White cardstock, LF1753, 2" x 2.5"

Card base

- (1) 7" x 8.5", folded to 3.5" x 8.5"

Stamp and diecut the following images:

Toucan Do It

- jaguar sitting, facing right
- jaguar walking, facing left
- large branch
- lizard
- flying toucan
- sitting toucan
- butterfly with closed wings
- butterfly with open wings
- hibiscus flowers (2)
- monstera leaf (3)
- palm leaf (3)



Card 2: Wild Ride



Lawn Fawn Stamps & Lawn Cuts:

Toucan Do It, LF2603
Toucan Do It Lawn Cuts, LF2604
Slimline Tropical Leaves Border, LF2618
Tropical Leaves Backdrop, LF2615

Other Lawn Fawn Supplies:

Rainforest Cardstock, LF2085
Cilantro Cardstock, LF1372
Paper bag Cardstock, LF1574
White Cardstock (Neenah Classic Crest 80lb Smooth Solar White), LF1753
Black Licorice Ink Pad, LF868
Jet Black Ink Pad, LF1302

Recommended Supplies:

Copics (specific colors listed on coloring guide pages)
Lawn Fawn Glue Tube, LF1664
Foam Tape or pop-dots

Card Base:

cut to 4.25" x 11", folded to 4.25" x 5.5"

Popped up with foam tape:

- tropical leaves backdrop dies
- cilantro tropical leaves border
- both branches
- toucan



Card 2: prep

Before class, it will be helpful if you have the following pieces stamped/die-cut etc. Jenn used Neenah Classic Crest Cover, Solar White 80#, Super Smooth for Copic coloring, card bases, and white layers on cards. Lawn Fawn white cardstock item LF1753 is just that. Jenn also used Lawn Fawn Jet Black ink pad item LF1302 to stamp her images as she will be coloring with Copic markers.



- Paper bag cardstock 4.25" x 5.5"
- Rainforest cardstock die cut with Tropical Leaves Backdrop LF2615
- Cilantro cardstock, die cut with Tropical Leaves Backdrop LF2615
- Rainforest cardstock die cut with Slimline Tropical Leaves Border, LF2618 - leaves are approx 2" high, and cut to be 4.25" wide
- Cilantro cardstock die cut with Slimline Tropical Leaves Border, LF2618 - leaves are approx 1.5" high, and cut to be 4.25" wide

Stamp and diecut the following images:

Toucan Do It

- jaguar sitting, facing right
- jaguar walking, facing left
- large branch
- small branch
- flying toucan
- butterfly with open wings

Card base

- (1) 4.25" x 11", folded to 4.25" x 5.5"



Copic Coloring Guide

You can use any coloring medium during class. Jenn will be coloring with the following Copic markers and will teach her blending tips and tricks. No matter what coloring medium you are using, these coloring guides will help with where to put the shadows, and color choice. Jenn shares more about Copic marker basics here: www.shurkus.com/copic101

Before class TIP: using a repositionable tape/washi tape temporarily adhere your images to a strip of tape to make it easier to hold onto the images while coloring in class (shown below)



Coloring with Copic (refer to coloring guides):
Y17, Y15 main part of jaguar
Y21 nose of jaguar
E29 spots on jaguar



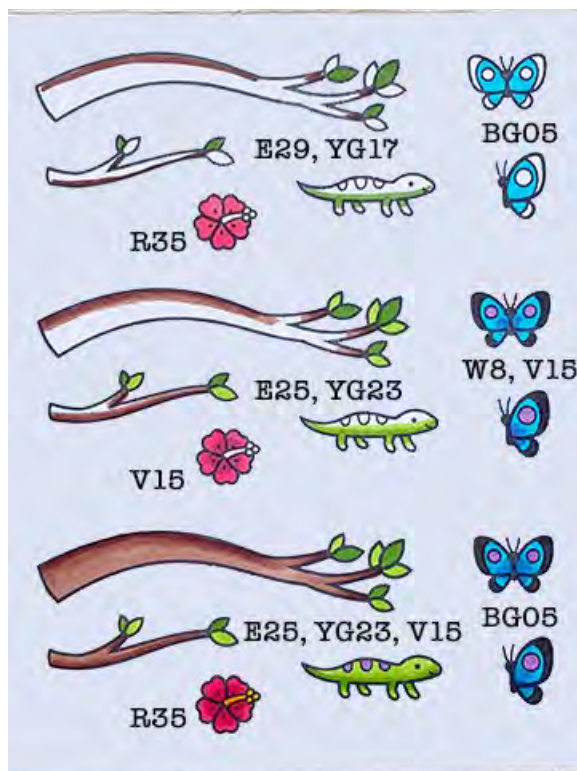
Coloring with Copic (refer to coloring guides):
Small flower RV13, Y17

Toucan beak R35, Y17, BG05
Toucan eye area Y21
Toucan feet Y17
Toucan body W8



Copic Coloring Guide

You can use any coloring medium during class. Jenn will be coloring with the following Copic markers and will teach her blending tips and tricks. No matter what coloring medium you are using, these coloring guides will help with where to put the shadows, and color choice. Jenn shares more about Copic marker basics here: www.shurkus.us/copic101



Coloring with Copics (refer to coloring guides):

Large and small branch E29, E25
Leaves alternate with YG17 and YG23

Lizard YG17, YG23
Lizard stripes V15

Hibiscus R35, V15, Y17

Butterflies BG05, W8, V15

(not pictured as there is no blending)

Monstera leaf YG17
Palm leaf YG23

copic coloring
guide

free download →



www.shurkus.com/printables