



Create With Us: Summer 2023

thank you!

Thank you for being part of our class! Remember, these are YOUR cards, and no one is going to compare them to ours. Making substitutions and switching things up is a benefit of working from your crafty space. We will list some specific details to the cards, like what is popped up, but remember you do you and- just have fun!

If you have any questions feel free to email Jenn!
creative-chick@shurkus.com

connect with us:

We would love to see what you create in this class you can use these hashtags so we don't miss it

- #LFCreateWithUs**
- #creativechickclasses**
- tag @lawnfawn**
- tag @jennshurkus**

HAPPY CREATING!

Jenn Shurkus & Kelly Marie Alvarez

www.shurkus.com
www.lawnfawn.com



be inspired!
 you can win a lawn fawn
 gift certificate!
lawnfawnatics.com



more Lawn Fawn Create with Us classes
www.shurk.us/LF-create-with-us



www.shurkus.com



Card 1: Hello Sunshine



Lawn Fawn Stamps & Lawn Cuts:

Car Critters, LF2338
Car Critters Lawn Cuts, LF2339
Car Critters Road Trip Add-On, LF3167
Car Critters Road Trip Add-On Lawn Cuts, LF3168
Giant Hello Sunshine, LF3140
Extra Sentiment Banners, LF1140

Other Lawn Fawn Supplies:

Cloud Background Stencils, LF3110
Stripes 'n Sprinkles - Pink Pow 12x12 paper, LF2915
(or Stripes 'n Sprinkles Petite Paper Pack, LF2921)
Guava Cardstock, LF1117
White Cardstock (Neenah Classic Crest 80lb Smooth Solar White), LF1753
Lemonade Ink Pad, LF1566
Sunflower Ink Pad, LF862
Black Licorice Ink Pad, LF868
Jet Black Ink Pad, LF1302

Recommended Supplies:

Copics (specific colors listed on coloring guide pages)
Lawn Fawn Glue Tube, LF1664
Stamping platform or a larger acrylic block like 3" x 6" LF1044
1.75" Grip Round Grip Block, LF496
Make Art Stay-tion, LF2548**
Blender Brushes
Distress White Heavystock, LF3041
3L Foam Squares, LF886
3L Foam Strips, LF2819
Quickie Glue Pen, LF2551
Prisma Glitter, LF1535
Black Glaze Pen
Low tack tape, LF1037
Die Cut Machine

** used with stencils and ink blending



Card 1: prep

Before class, it will be helpful if you have the following pieces stamped/die-cut etc. Jenn used Neenah Classic Crest Cover, Solar White 80#, Super Smooth for Copic coloring, card bases, and most white layers on cards unless otherwise noted. Lawn Fawn white cardstock item LF1753 is just that. Jenn also used Lawn Fawn Jet Black ink pad item LF1302 to stamp her images as she will be coloring with Copic markers which are alcohol based.



Paper Prep:

- 4 1/4" x 5 1/2" White Cardstock for ink blended (Jenn will be using Distress White Heavystock, LF3041)
- 4 1/4" x 5 1/2" patterned paper (Jenn will be using Stripes 'n Sprinkles - Pink Pow 12x12 paper, LF2915)

Diecut the following:

- Giant Hello Sunshine, LF3140 cut out of Distress White Heavystock, LF3041 - qty 2
- Giant Hello Sunshine, LF3140 cut out of Guava Cardstock, LF1117
- 2 3/4" x 3/8" sentiment banner with "Adventure Awaits" from Car Critters Road Trip Add-On, LF3167 stamped on it in black ink (Jenn used Extra Sentiment Banners, LF1140)

Card Base:

- cut to 5 1/2" x 8 1/2", folded to 5 1/2" x 4 1/4", horizontal top fold

Stamp and diecut the following images:

(Jenn used Lawn Fawn Jet Black ink LF1302 that works with alcohol based markers and 80# Neenah cardstock which Lawn Fawn White Cardstock LF1753 is)

Car Critters, LF2338 and Lawn Cuts, LF2339

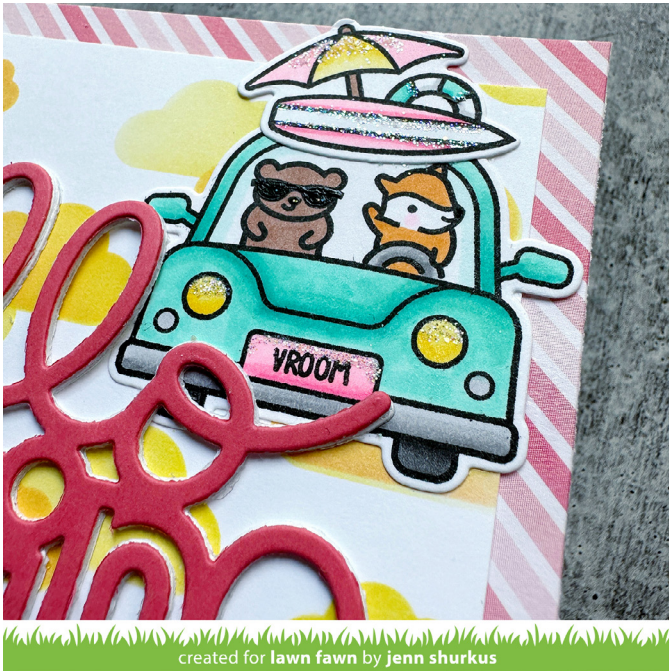
- car

Car Critters Road Trip Add-On, LF3167 and Lawn Cuts, LF3168

- add the fox and bear into the car
- add "vroom" onto the license plate
- surfboard/beach umbrella



Card 1: details



Glittered:

Prisma Glitter, LF1535 - Quickie Glue Pen, LF2551
top of beach umbrella
lines on surf board
shadow on teal of life preserver
highlights of headlights
top line of license plate

Black Glaze Pen:

bears sunglasses

Popped up with foam strips:

sentiment banner



Card 2: Time To Shell-ebrate



created for lawn fawn by jenn shurkus

Lawn Fawn Stamps & Lawn Cuts:

- How You Bean?, LF1325
- How You Bean? Lawn Cuts, LF1326
- How You Bean? Seashell Add-On, LF3169
- How You Bean? Seashell Add-On Lawn Cuts, LF3170

Other Lawn Fawn Supplies:

- Lots of Stars Background Stencils, LF2893
- Sunray Background Stencil, LF2894
- White Cardstock (Neenah Classic Crest 80lb Smooth Solar White), LF1753
- Lemonade Ink Pad, LF1566
- Bubblegum Ink Pad, LF1388
- Black Licorice Ink Pad, LF868
- Jet Black Ink Pad, LF1302

Recommended Supplies:

- Copics (specific colors listed on coloring guide pages)
- Lawn Fawn Glue Tube, LF1664
- Stamping platform or a larger acrylic block like 3" x 6" LF1044
- 1.75" Grip Round Grip Block, LF496
- Make Art Stay-tion, LF2548**
- Blender Brushes
- Distress White Heavystock, LF3041
- 3L Foam Squares, LF886
- Quickie Glue Pen, LF2551
- Prisma Glitter, LF1535
- Low tack tape, LF1037
- Die Cut Machine
- Paper Trimmer

** used to stencil



Card 2: prep

Before class, it will be helpful if you have the following pieces stamped/die-cut etc. Jenn used Neenah Classic Crest Cover, Solar White 80#, Super Smooth for Copic coloring, card bases, and most white layers on cards unless otherwise noted. Lawn Fawn white cardstock item LF1753 is just that. Jenn also used Lawn Fawn Jet Black ink pad item LF1302 to stamp her images as she will be coloring with Copic markers which are alcohol based.



Paper Prep:

- 4 1/4 x 5 1/2" White Cardstock for ink blended (Jenn will be using Distress White Heavystock, LF3041)

Card Base:

- cut to 4 1/4" x 11", folded to 4 1/4" x 5 1/2", vertical top fold

Stamp and diecut the following images:

(Jenn used Lawn Fawn Jet Black ink LF1302 that works with alcohol based markers and 80# Neenah cardstock which Lawn Fawn White Cardstock LF1753 is)

How You Bean?, LF1325 and Lawn Cuts, LF1326

- jar
- jar lid

How You Bean? Seashell Add-On, LF3169 and Lawn Cuts, LF3170

- stamp bunch of shells into jar
- clam shell
- star fish
- whelk shell
- scallop shell
- moon snail



Jenn Shurkus & Kelly Marie Alvarez

www.lawnfawn.com
www.shurkus.com

Card 2: details



Glittered:

Prisma Glitter, LF1535 - Quickie Glue Pen, LF2551
highlights on all shells
fill in letters "shell-eborate"

Popped up with foam squares:

- jar
- clam shell
- whelk shell
- scallop shell
- moon snail

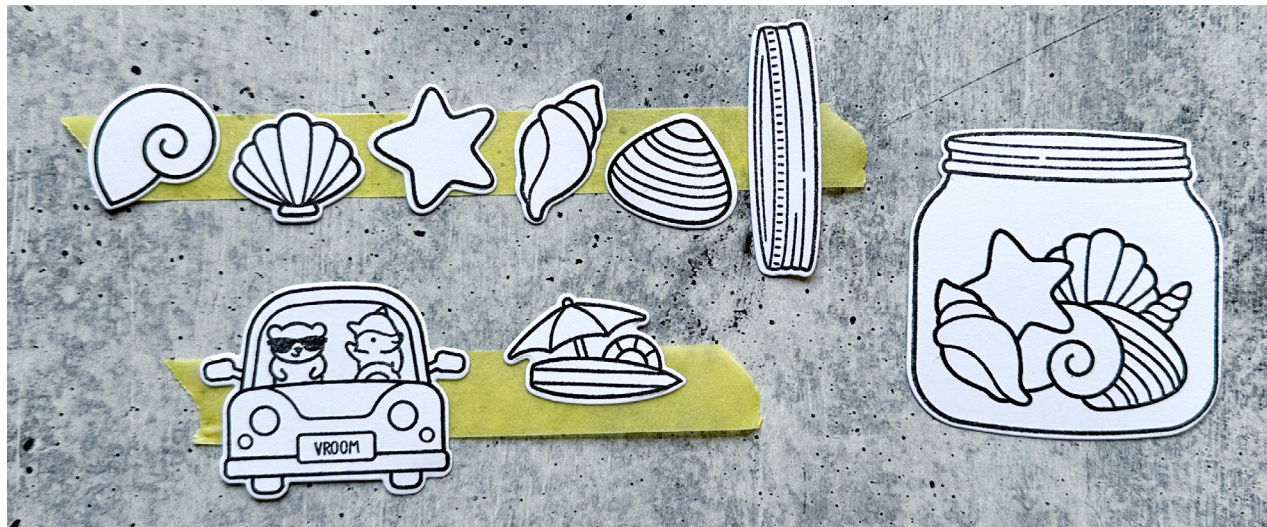


Copic Coloring Guide

You can use any coloring medium during class. Jenn will be coloring with the following Copic markers and will teach her blending tips and tricks. No matter what coloring medium you are using, these coloring guides will help with where to put the shadows, and color choice. Jenn shares more about Copic marker basics here: www.shurk.us/copic101

Before class TIP: using a low tack tape/washi tape temporarily adhere your images to a strip of tape to make it easier to hold onto the images while coloring in class (shown below)

Note: all images may not be shown, just those that are smaller that we will be coloring, refer to the prep for a full list



Copic Markers Used:

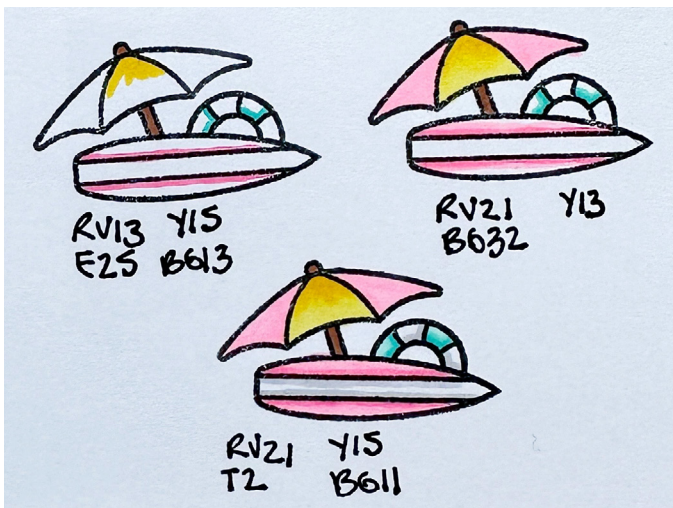
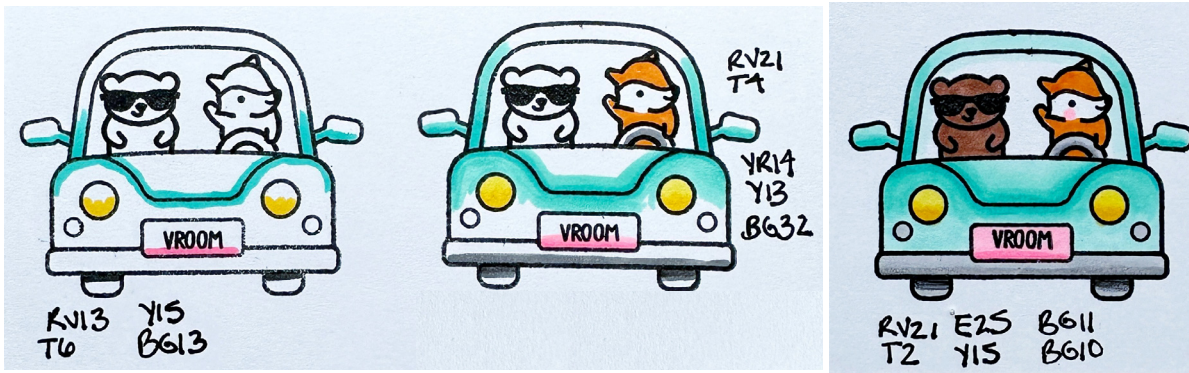
RV10	BG13
RV21	BG10
RV13	BG0000
V15	E21
YR14	E33
Y38	E23
Y15	E25
Y13	E29
B00	W2
BG11	T2
BG32	T4
	T6





Copic Coloring Guide

You can use any coloring medium during class. Jenn will be coloring with the following Copic markers and will teach her blending tips and tricks. No matter what coloring medium you are using, these coloring guides will help with where to put the shadows, and color choice. Jenn shares more about Copic marker basics here: www.shurk.us/copic101



Coloring with Copsics (refer to coloring guides):

- car BG13, BG32, BG11
- license plate RV13, RV21
- headlights Y15, Y13
- tires T6, T4, T2
- bumper T4, T2
- bear E25
- fox YR14, RV21
- beach umbrella RV21, Y15, Y13, E25
- surf board RV13, RV21, T2
- life preserver BG13, BG32, BG11, T2



Copic Coloring Guide

You can use any coloring medium during class. Jenn will be coloring with the following Copic markers and will teach her blending tips and tricks. No matter what coloring medium you are using, these coloring guides will help with where to put the shadows, and color choice. Jenn shares more about Copic marker basics here: www.shurk.us/copic101



e21



RV21



e21
RV10

Coloring with Copics (refer to coloring guides):

whelk shell E21, RV21, RV10

moon snail E25, E23, E21, RV21

scallop shell B00, W2

starfish Y38, Y15, Y13, E33

clam shell V15, W2, E21



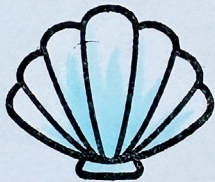
e25



e23



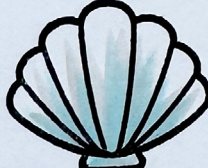
e21
RV21



B00



W2



B00

keep track of your favorite color combos!

copic coloring guide

free download →



Y38



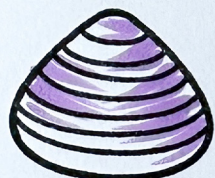
Y15 e33



Y13

lined note page

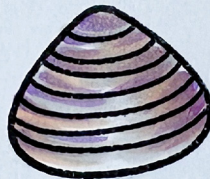
free download →



V15



W2

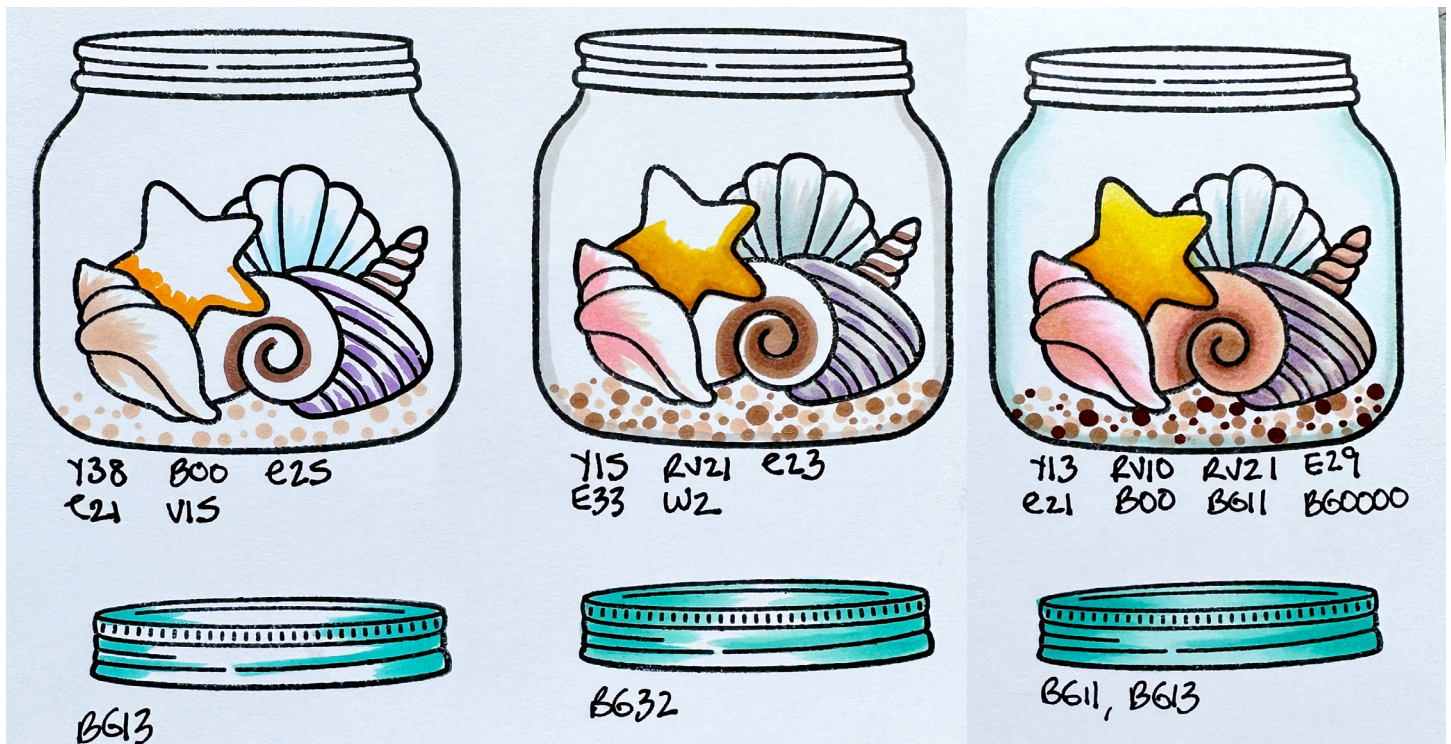


e21



Copic Coloring Guide

You can use any coloring medium during class. Jenn will be coloring with the following Copic markers and will teach her blending tips and tricks. No matter what coloring medium you are using, these coloring guides will help with where to put the shadows, and color choice. Jenn shares more about Copic marker basics here: www.shurk.us/copic101



Coloring with Copics (refer to coloring guides):

- whelk shell E21, RV21, RV10
- moon snail E25, E23, E21, RV21
- scallop shell B00, W2
- starfish Y38, Y15, Y13, E33
- clam shell V15, W2, E21
- jar lid BG13, BG32, BG11
- inner jar W2, BG11, BG0000
- sand E21, E25, E29