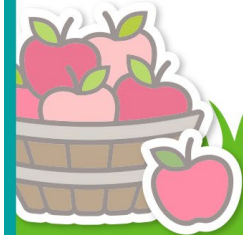


CREATE WITH US:
**APPLE-SOLUTELY
AWESOME**

SEPTEMBER 24

#LFCREATEWITHUS



Create With Us: Apple-solutely Awesome

thank you!

Thank you for being part of our class! Remember, these are YOUR cards, and no one is going to compare them to ours. Making substitutions and switching things up is a benefit of working from your crafty space. I will list some specific details to the cards, like what is popped up, but remember you do you and- just have fun!

If you have any questions feel free to email Jenn!
creative-chick@shurkus.com

connect with us:

We would love to see what you create in this class you can use these hashtags so we don't miss it

#LFCreateWithUs
#creativechickclasses
tag @lawnfawn
tag @jennshurkus

HAPPY CREATING!

Jenn Shurkus & Kelly Marie Alvarez

www.shurkus.com
www.lawnfawn.com



be inspired!
you can win a lawn fawn
gift certificate!

lawnfawnatics.com



more Lawn Fawn Create with Us classes
www.shurk.us/LF-create-with-us

creative chick
shurkus.com · online classes · creative inspiration



www.shurkus.com

CREATE WITH US:

APPLE-
SOLUTELY
AWESOME

SEPT 24



Card 1: Happy Fall



created for lawn fawn by jenn shurkus

Lawn Fawn Stamps & Lawn Cuts:

Apple-solutely Awesome, LF2930
Apple-solutely Awesome Lawn Cuts, LF2931
Giant Happy Fall, LF2969
Small Stitched 4 Bar Rectangles, LF1027

Other Lawn Fawn Supplies:

Fall Leaves Background Stencils, LF2709
Kraft Cardstock, LF1747
White Cardstock (Neenah Classic Crest 80lb Smooth Solar White), LF1753
No. 2 Pencil Ink Pad, LF1852*
Fake Tan Ink Pad, LF861*
Walnut Ink Pad, LF867*
Jet Black Ink Pad, LF1302

* we will be ink blending with these ink pads

Recommended Supplies:

Copics (specific colors listed on coloring guide pages)
Lawn Fawn Glue Tube, LF1664

Recommended Supplies Cont:

Distress White Heavystock, or favorite white cardstock for ink blending
Stamping platform or a larger acrylic block like 3" x 6" LF1044
Make Art Stay-tion, LF2548**
3L Foam Squares, LF886
3L Foam Strips, LF2819
Blending Brushes or Ink Blending Tools
Low tack tape, LF1037
Die Cut Machine

** used to hold stencils in place when ink blending

CREATE WITH US:

APPLE-
SOLUTELY
AWESOME

SEPT 24



Jenn Shurkus & Kelly Marie Alvarez

www.lawnfawn.com

www.shurkus.com

Card 1: prep

Before class, it will be helpful if you have the following pieces stamped/die-cut etc. Jenn used Neenah Classic Crest Cover, Solar White 80#, Super Smooth for Copic coloring, card bases, and most white layers on cards unless otherwise noted. Lawn Fawn white cardstock item LF1753 is just that. Jenn also used Lawn Fawn Jet Black ink pad item LF1302 to stamp her images as she will be coloring with Copic markers.



Paper Prep:

- White Cardstock 4 1/4" x 5 1/2" (Jenn used Distress White Heavystock)

Diecut the following:

- White Cardstock 4 3/8" x 3" (Jenn used Small Stitched 4 Bar Rectangles, LF1027 and LF1753 white cardstock)
- Giant Happy Fall out of Kraft Cardstock LF1747

Card Base:

- cut to 5 1/2" x 8 1/2", folded to 4 1/4" x 5 1/2", horizontal top fold

Stamp and diecut the following images:

(Jenn used Lawn Fawn Jet Black ink LF1302 that works with alcohol based markers and 80# Neenah cardstock which Lawn Fawn White Cardstock LF1753 is)

Apple-solutely Awesome, LF2930 and Apple-solutely Awesome Lawn Cuts, LF2931

- apple tree
- single apples - qty 3
- apple wedge - qty 3
- barrel of apples
- ladder
- cider bottle

CREATE WITH US:

APPLE-
SOLUTELY
AWESOME

SEPT 24



Card 1: details



Popped up with foam squares and strips:

- happy fall
- apple barrel
- cider jar
- single apple in front under the "a"
- apple wedge on the right
- stitched rectangle

CREATE WITH US:

APPLE-
SOLUTELY
AWESOME

SEPT 24



Jenn Shurkus & Kelly Marie Alvarez

www.lawnfawn.com
www.shurkus.com

Card 2: Apple-Solutely Awesome



Lawn Fawn Stamps & Lawn Cuts:

Apple-solutely Awesome, LF2930
Apple-solutely Awesome Lawn Cuts, LF2931
Small Stitched Rectangle Stackables, LF768

Other Lawn Fawn Supplies:

Fall Leaves Background Stencils, LF2709
White Cardstock (Neenah Classic Crest 80lb Smooth Solar White), LF1753
Lobster Ink Pad, LF926*
No. 2 Pencil Ink Pad, LF1852*
Fake Tan Ink Pad, LF861*
Walnut Ink Pad, LF867*
Black Licorice Ink Pad, LF868
Jet Black Ink Pad, LF1302

* we will be ink blending with these ink pads

Recommended Supplies:

Copics (specific colors listed on coloring guide pages)
Lawn Fawn Glue Tube, LF1664
Distress White Heavystock, or favorite white cardstock for ink blending
Stamping platform or a larger acrylic block like 3" x 6" LF1044
2.5" round grip block with grid, LF497
Make Art Stay-tion, LF2548**
3L Foam Squares, LF886
Blending Brushes or Ink Blending Tools
Low tack tape, LF1037
Die Cut Machine

** used to hold stencils in place when ink blending

CREATE WITH US:

APPLE-
SOLUTELY
AWESOME

SEPT 24



Card 2: prep

Before class, it will be helpful if you have the following pieces stamped/die-cut etc. Jenn used Neenah Classic Crest Cover, Solar White 80#, Super Smooth for Copic coloring, card bases, and most white layers on cards unless otherwise noted. Lawn Fawn white cardstock item LF1753 is just that. Jenn also used Lawn Fawn Jet Black ink pad item LF1302 to stamp her images as she will be coloring with Copic markers.



Paper Prep:

- White Cardstock 4 1/4" x 5 1/2" (Jenn used Distress White Heavystock)

Diecut the following:

- White Cardstock 2 3/4" x 4" (Jenn used Small Stitched Rectangles LF768 and LF1753 white cardstock)

Card Base:

- cut to 4 1/4" x 11", folded to 4 1/4" x 5 1/2", vertical top fold

Stamp and diecut the following images:

(Jenn used Lawn Fawn Jet Black ink LF1302 that works with alcohol based markers and 80# Neenah cardstock which Lawn Fawn White Cardstock LF1753 is)

Apple-solutely Awesome, LF2930 and Apple-solutely Awesome Lawn Cuts, LF2931

- apple tree
- single apple
- barrel of apples
- ladder
- sign
- mouse facing the left
- mouse holding an apple

CREATE WITH US:

APPLE-
SOLUTELY
AWESOME

SEPT 24



Card 2: details



created for lawn fawn by jenn shurkus



created for lawn fawn by jenn shurkus

Popped up with foam squares:

- apple barrel
- sign
- mouse on ladder
- mouse eating an apple
- stitched rectangle



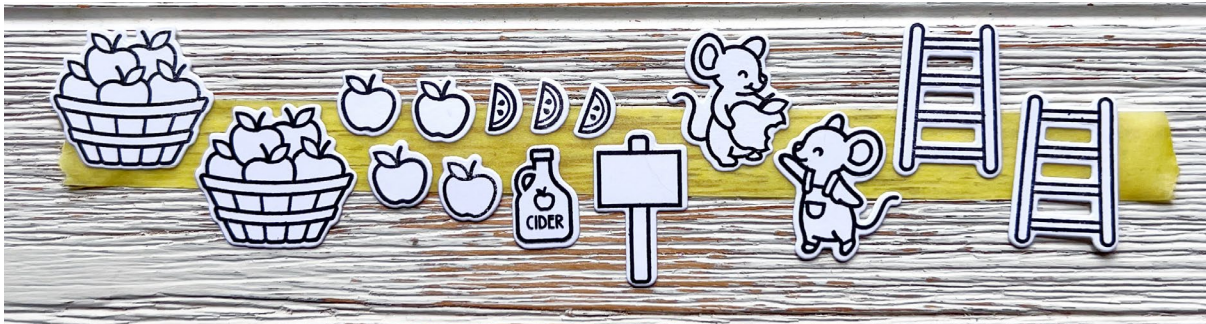
Copic Coloring Guide

You can use any coloring medium during class. Jenn will be coloring with the following Copic markers and will teach her blending tips and tricks. No matter what coloring medium you are using, these coloring guides will help with where to put the shadows, and color choice. Jenn shares more about Copic marker basics here:

www.shurk.us/copic101

Before class TIP: using a repositionable tape/washi tape temporarily adhere your images to a strip of tape to make it easier to hold onto the images while coloring in class (shown below)

Note: not all images are shown, just those that are smaller that we will be coloring, refer to the prep for a full list



Copic Markers Used:

R20	B34
R35	B97
R29	E21
YR24	E33
YG05	E23
YG09	E37
BG10	

Copics Used:

 R20	 B610
 R35	 B3A
 R29	 B97
 YR24	 E21
 YG05	 E33
 YG09	 E23
	 E37

CREATE WITH US:

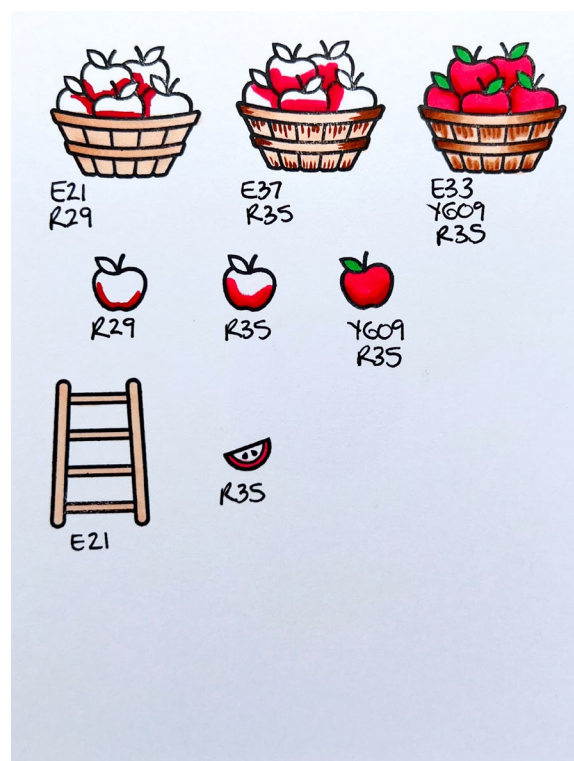
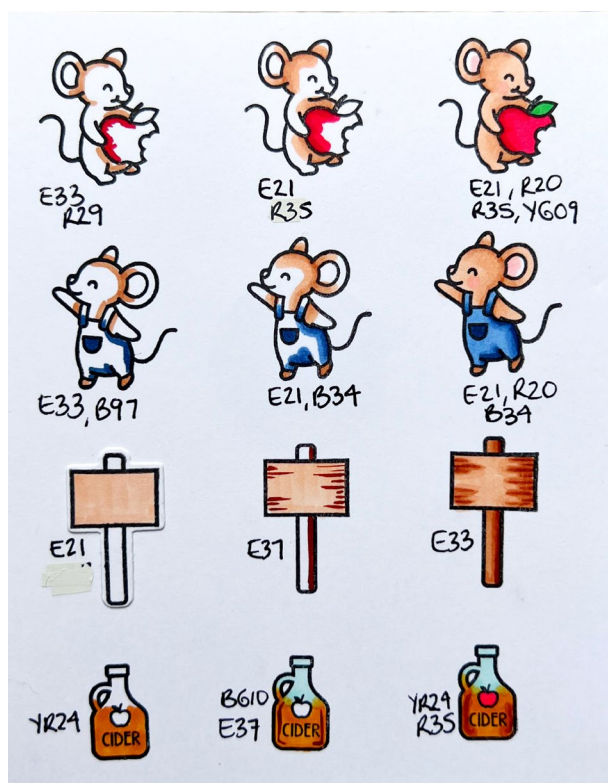
APPLE-
SOLUTELY
AWESOME

SEPT 24



Copic Coloring Guide

You can use any coloring medium during class. Jenn will be coloring with the following Copic markers and will teach her blending tips and tricks. No matter what coloring medium you are using, these coloring guides will help with where to put the shadows, and color choice. Jenn shares more about Copic marker basics here: www.shurk.us/copic101



Coloring with Copics (refer to coloring guides):

mice bodies E33, E21

inner ears, rosy cheeks, noses R20

overalls B97, B34

sign E21, E37, E33

cider jar YR24, E37, BG10

apple on cider jar R35

barrel E21, E37, E33

apples R29, R35

leaves YG09

ladder E21

apple wedge R35

CREATE WITH US:

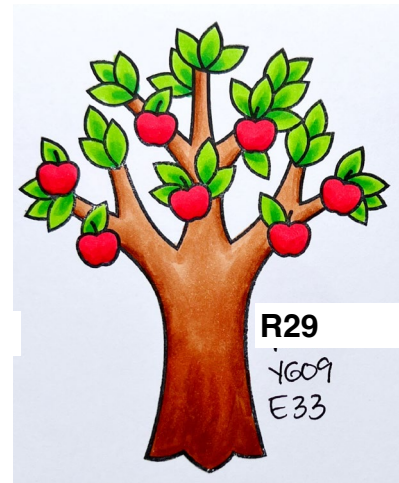
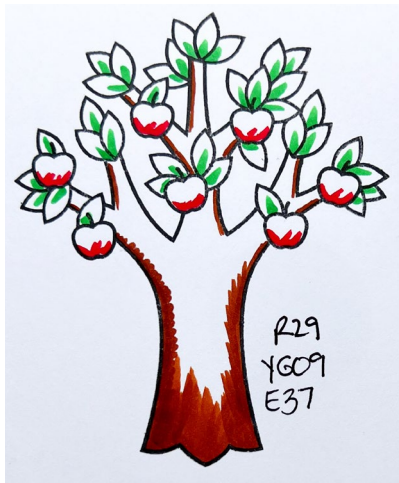
APPLE-
SOLUTELY
AWESOME

SEPT 24



Copic Coloring Guide

You can use any coloring medium during class. Jenn will be coloring with the following Copic markers and will teach her blending tips and tricks. No matter what coloring medium you are using, these coloring guides will help with where to put the shadows, and color choice. Jenn shares more about Copic marker basics here: www.shurk.us/copic101



Coloring with Copics (refer to coloring guides):

- tree trunk E37, E33
- apples R29, R35
- leaves YG09, YG05

copic coloring
guide

free download



www.shurkus.com/printables