



Wicked Kitty

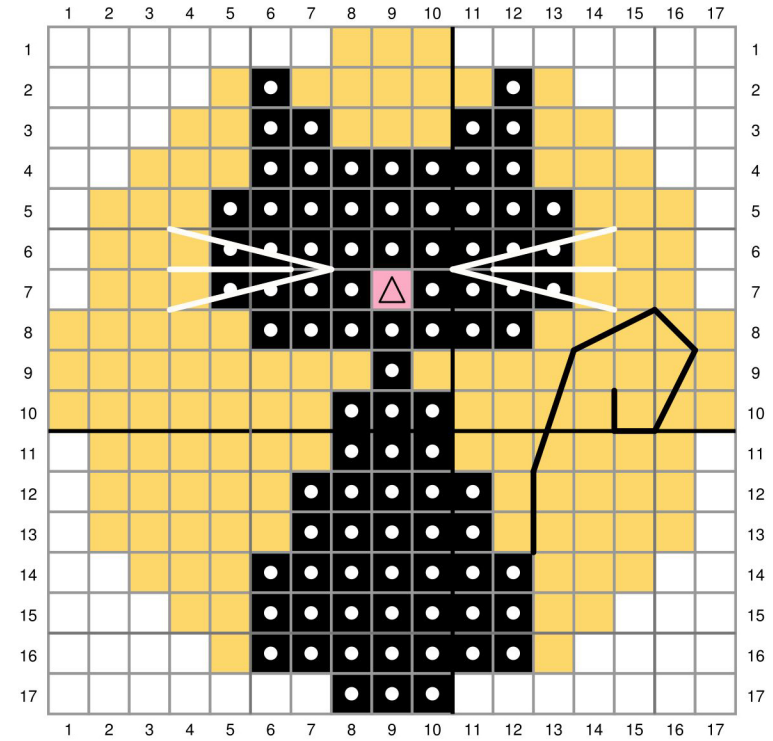
Pattern for Embroidery Hoop Lawn Cuts
by Chari Moss



created for lawn fawn by chari moss

Card Supplies Used:

Embroidery Hoop LF3093
 Purrfectly Wicked LF2664
 Purrfectly Wicked Lawn Cuts LF2665
 Spooktacular LF698
 Outside In Stitched Rectangle Stackables LF1442
 Stitched Windy Backdrop LF1425
 Hearts and Stars Skinny Tag LF2572
 Cilantro Cardstock LF1372
 Sunflower Cardstock LF1119
 Canned Pumpkin Cardstock LF1575
 Sparkle Cardstock - Autumn LF1748
 Jet Black Premium Ink LF1302
 Mowed Lawn Distress Ink
 Star Dust Stickles LF1007
 Black Jute Twine



-  No stitch
-  DMC 310 - Black - Backstitch with 4 strands
-  DMC 605 - Very Light Cranberry
-  DMC 3865 - Winter White - Backstitch with 4 strands
-  DMC 743 - Medium Yellow or Sunflower cardstock