



lawn fawn

Rudy Reindeer

Pattern for Embroidery Hoop Lawn Cuts
by Chari Moss

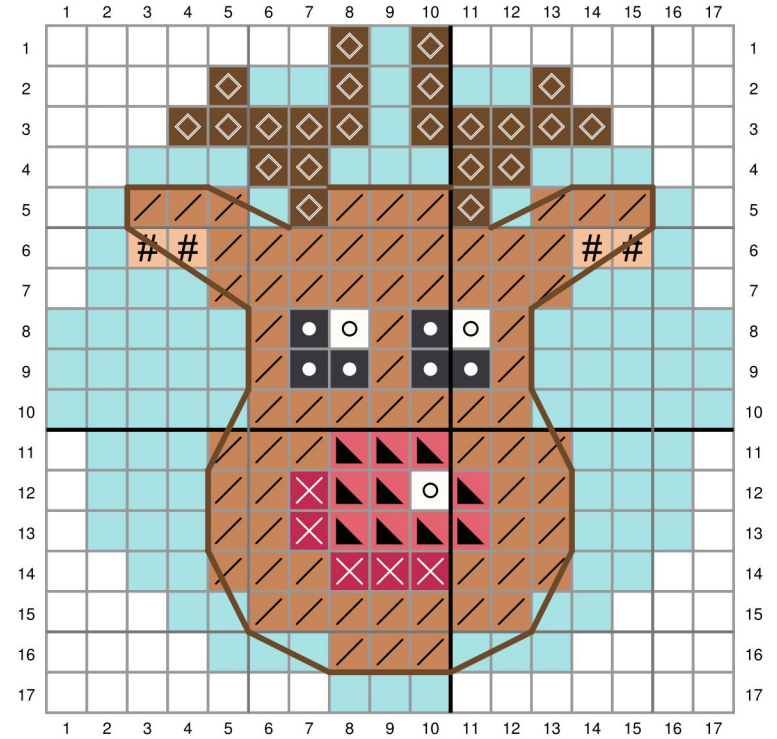


created for lawn fawn by chari moss

Card Supplies Used:

Embroidery Hoop LF3093
Offset Sayings: Christmas LF2026
Mini String of Lights LF2060
Forest Border LF773
Raspberry Cardstock LF1374
Guava Cardstock LF1117
Moonstone Cardstock LF1445
Narwhal Cardstock LF1272
Storm Cloud Cardstock LF1273
Sparkle Cardstock - Pixie Dust LF1750
Distress Oxide Salvaged Patina
Distress Oxide Peacock Feathers
Distress Oxide Mermaid Lagoon
Jet Black Ink LF1302

Star Dust Stickers LF1007
Gansai Tambi Starry Colors LF1850
Gelly Roll Pen 08 Medium LF1033



- No stitch
- ◇ DMC 436 - Tan
- ◇ DMC 3862 - Dark Mocha Beige - Backstitch with 4 strands
- # DMC 945 - Tawny
- ▴ DMC 3832 - Medium Raspberry
- ✕ DMC 3831 - Dark Raspberry
- DMC 3799 - Very Dark Pewter Gray
- DMC 3865 - Winter White
- DMC 3811 - Very Light Turquoise or Moonstone Cardstock