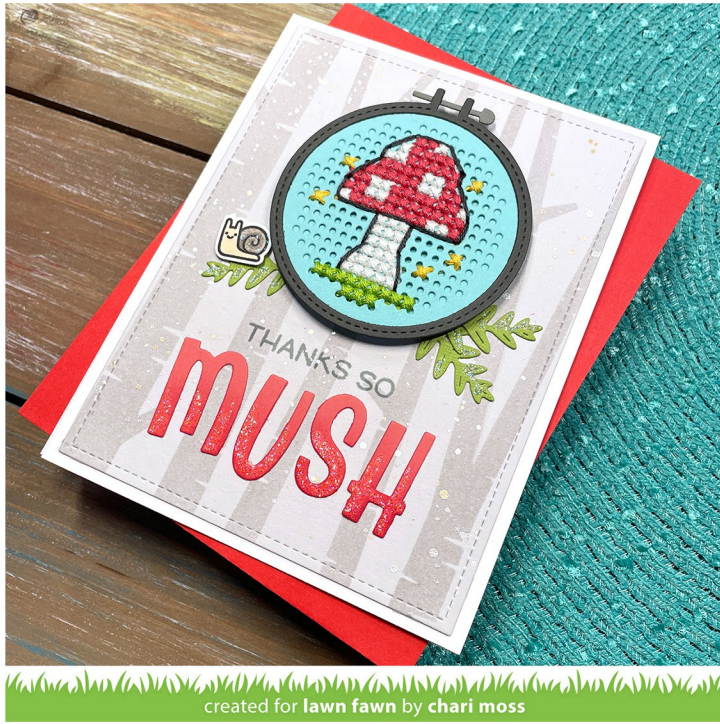




Really Fun-gi

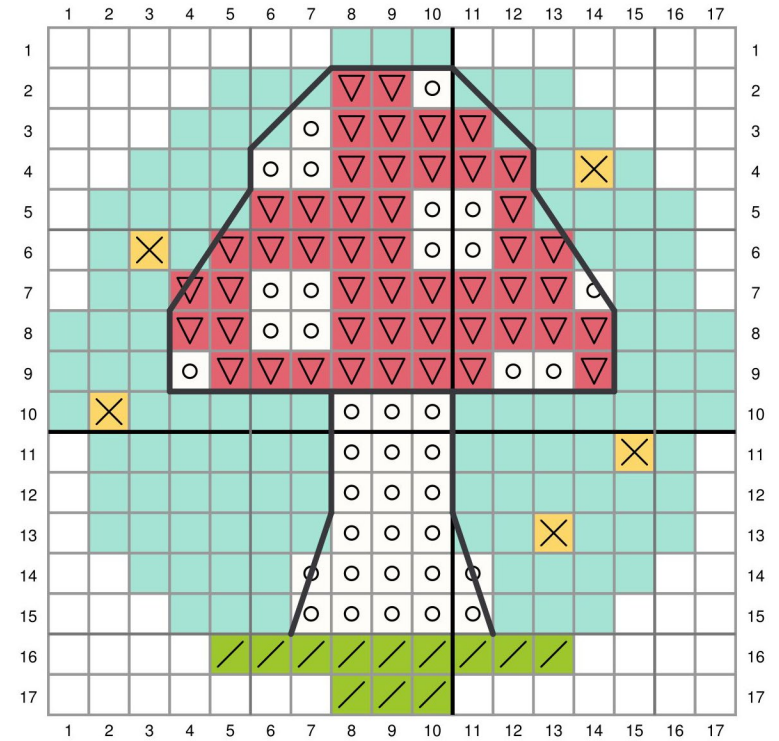
Pattern for Embroidery Hoop Lawn Cuts
by Chari Moss



created for lawn fawn by chari moss

Card Supplies Used:

- Embroidery Hoop LF3093
- Thanks Thanks Thanks LF2405
- Porcu-pine for You LF3299
- Porcu-pine for You Lawn Cuts LF3300
- Henry's ABCs LF2814
- Happy Mushrooms LF3315
- Outside In Stitched Rectangle Stackables LF1442
- Birch Tree Stencils LF2981
- Fog Cardstock LF1842
- Guava Cardstock LF1117
- Mermaid Cardstock LF1121
- Storm Cloud Cardstock LF1273
- Narwhal Cardstock LF1272
- Textured Canvas Cardstock - Green LF2839
- Hippo Ink LF866
- Lost Shadow Distress Ink
- Gansai Tambi Starry Colors LF1850
- Star Dust Stickles LF1007



- No stitch
- ▽ DMC 3832 - Medium Raspberry
- DMC 3865 - Winter White
- DMC 907 - Light Parrot Green
- DMC 743 - Medium Yellow
- DMC 3799 - Very Dark Pewter Gray - Backstitch with 4 strands
- DMC 964 - Light Seagreen or Mermaid cardstock