



Jolly Jack

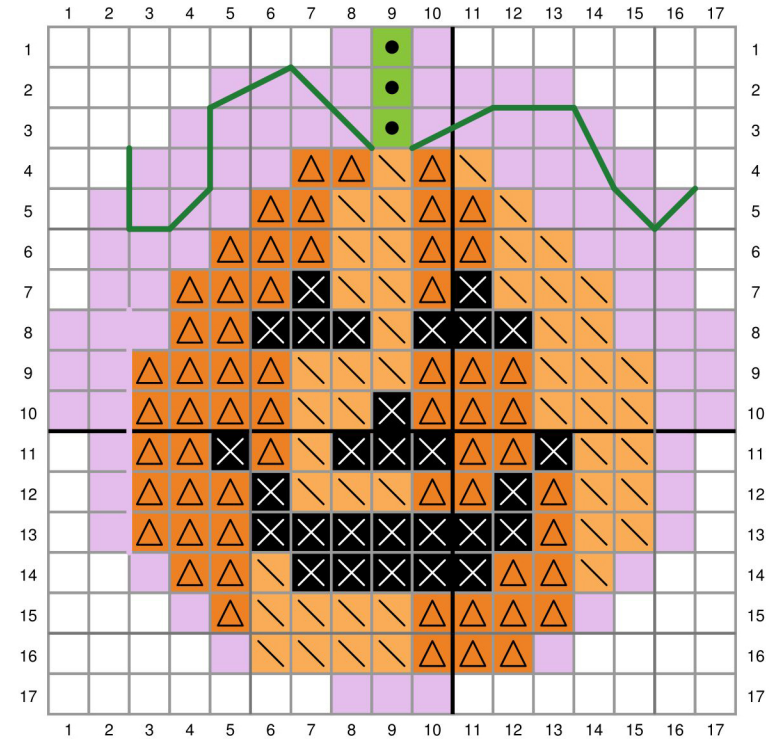
Pattern for Embroidery Hoop Lawn Cuts
by Chari Moss







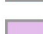


created for lawn fawn by chari moss

Card Supplies Used:

Embroidery Hoop LF3093
Simply Fall Sentiments LF2934
Large Stitched Rectangle Stackables LF767
Scalloped Treat Box Haunted House Add-On LF1487
Spooky Forest Backdrop LF3261
Hearts and Stars Skinny Tag LF2572
Stitched Pumpkins LF3245
Grassy Border LF613
Peacock Cardstock LF1122
Sunflower Cardstock LF1119
Fake Tan Cardstock LF1118
Sugarplum Cardstock LF1124
Cilantro Cardstock LF1372
White Cardstock LF1753
Canned Pumpkin Cardstock LF1575
Textured Canvas Cardstock - Gray LF2851
Sparkle Cardstock - Autumn LF1748
Black Licorice Ink LF868
Distress Ink - Black Soot
Distress Ink - Uncharted Mariner
Star Dust Stickles LF1007



-  No stitch
-  DMC 3854 - Medium Autumn Gold
-  DMC 3853 - Dark Autumn Gold
-  DMC 310 - Black
-  DMC 704 - Bright Chartreuse
-  DMC 701 - Light Green - Backstitch with 4 strands
-  DMC 209 - Dark Lavender or Sugarplum cardstock