



lawn fawn

Hop To It!

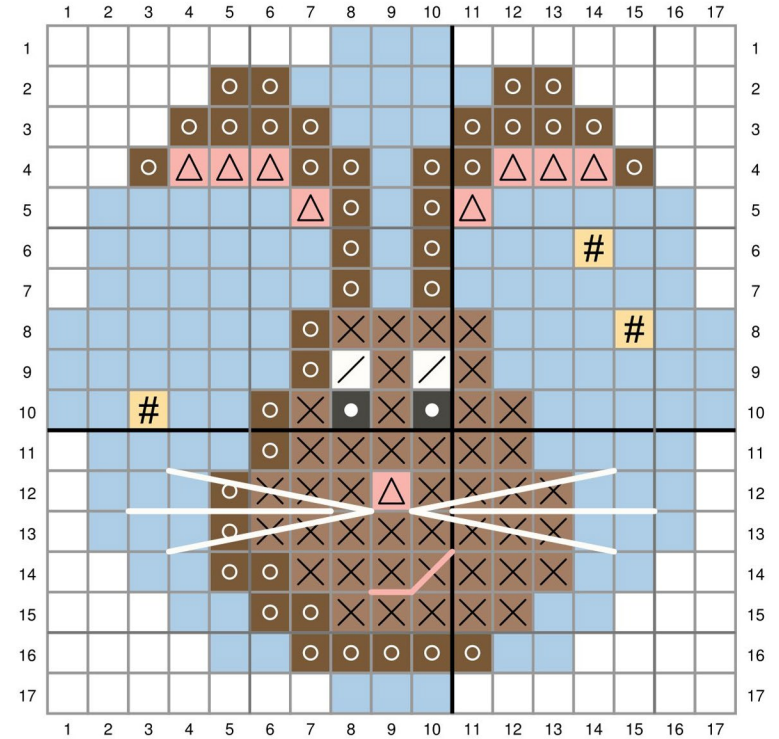
Pattern for Embroidery Hoop Lawn Cuts
by Chari Moss



created for lawn fawn by chari moss

Card Supplies Used:

- Embroidery Hoop LF3093
- Some Bunny LF1587
- Some Bunny Lawn Cuts LF1588
- Kanga-rrific LF3344
- Large Stitched Rectangle Stackables LF767
- Grassy Hillside Borders LF1200
- Moonstone Cardstock LF1445
- Ballet Slippers Cardstock LF1444
- Narwhal Cardstock LF1272
- Spiffy Speckles - Pesto paper LF1864
- Rainbow Ever After - Alice paper LF3325



- No stitch
- DMC 841 - Light Beige Brown
- DMC 840 - Medium Beige Brown
- DMC 844 - Ultra Dark Beaver Gray
- DMC 3865 - Winter White - Backstitch with 3 strands
- DMC 761 - Light Salmon - Backstitch with 6 strands
- DMC 3855 - Light Autumn Gold
- DMC 3325 - Light Baby Blue or Moonstone Cardstock