



Christmas Bell

Pattern for Embroidery Hoop Lawn Cuts
by Chari Moss

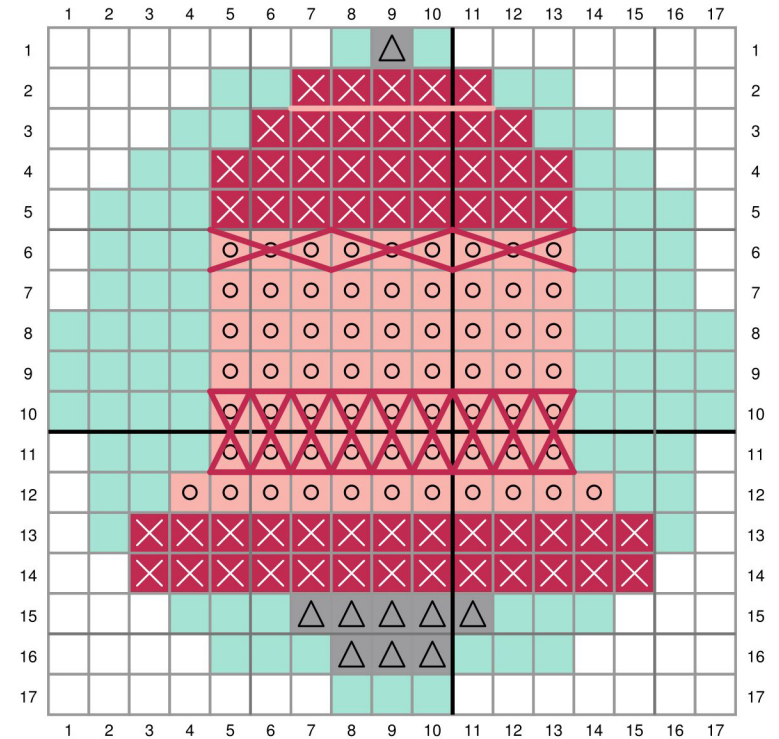


created for lawn fawn by chari moss

Card Supplies Used:

- Embroidery Hoop LF3093
- Winter Big Scripty Words LF1228
- Winter Big Scripty Words Lawn Cuts LF1229
- Hearts and Stars Skinny Tag LF2572
- Outside In Stitched Rectangle Stackables LF1442
- Poinsettia Background Stencils LF3280
- Speckled Eggshell Cardstock LF2086
- Mermaid Cardstock LF1121
- Peacock Cardstock LF1122
- Guava Cardstock LF1117
- Sparkle Cardstock - Silver LF3267
- White Embossing Powder LF1537
- Clear Embossing Ink LF1811
- Wild Rose Ink LF860

- Raspberry Ink LF1659
- Celery Stick Ink LF929
- Freshly Cut Grass Ink LF863
- Peacock Ink LF927
- Mermaid Ink LF864
- No. 2 Pencil Ink LF1852



-  No stitch
-  DMC 3831 - Dark Raspberry - Backstitch with 2 strands
-  DMC 761 - Light Salmon - Backstitch with 3 strands
-  DMC 04 - Dark Tin
-  DMC 964 - Light Seagreen or Mermaid Cardstock