



lawn fawn

Cheerful Cherries

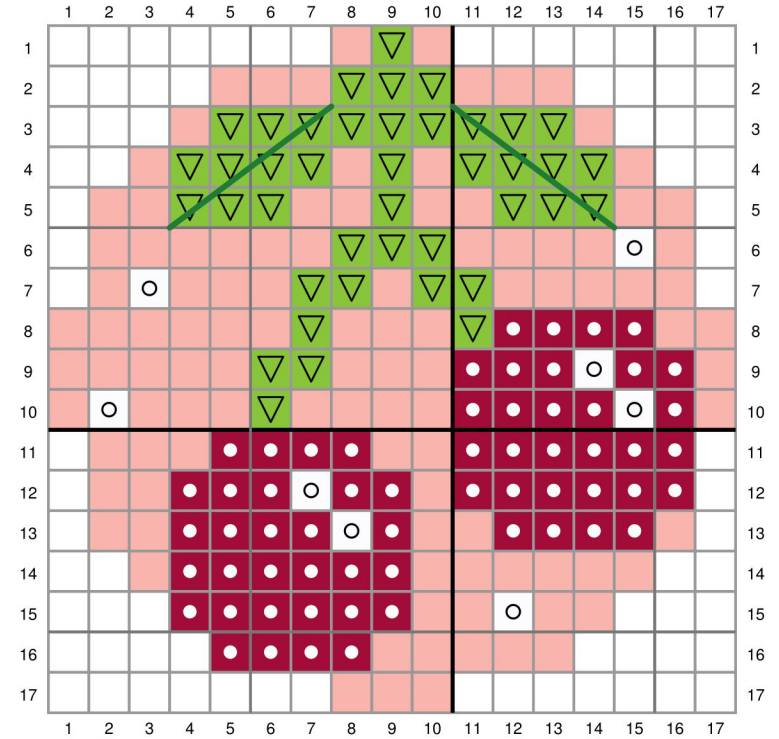
Pattern for Embroidery Hoop Lawn Cuts
by Chari Moss



created for lawn fawn by chari moss

Card Supplies Used:

- Embroidery Hoop LF3093
- Berry Special LF2764
- Henry's ABCs LF2814
- Scalloped Circle Stackables LF523
- Quilted Backdrop LF1625
- Mermaid Cardstock LF1121
- Raspberry Cardstock LF1374
- Ballet Slippers Cardstock LF1444
- White Cardstock LF1753
- Sparkle Cardstock Holiday LF1749
- Black Licorice Ink Pad LF868
- Star Dust Stickles LF1007



- No stitch
- DMC BLANC - White
- DMC 304 - Medium Red
- DMC 704 - Bright Chartreuse
- DMC 701 - Light Green - Backstitch with 4 strands
- DMC 761 - Light Salmon or Ballet Slippers Cardstock