

ITEM NO.	PART NUMBER	DESCRIPTION	QTY.
1	G131-D	base plate	2
2	BC1040F	M10 Chicago Female	8
3	BC1040M	M10 Chicago Male	8
4	SN2048BT	Bent Tube	2
5	SN2048BET	Bent End Tube	1
6	GA1	Ground Anchor	2
8	SN2048LBUM	Ladder bottom Male	2
9	DB2R	Monkey Rung	2
10	20MRCW1	M10 Concave Washer	4
11	B1045BH1	M10 x 45 BUTTON HEAD S.S SCREW	4
12	GAWASHER	WASHER	2

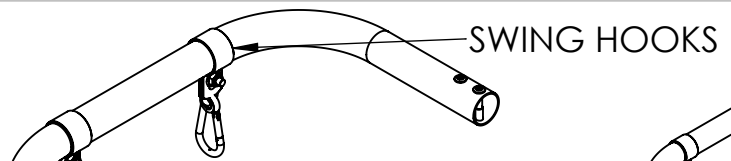


**ASSEMBLY INSTRUCTIONS**

**TITLE: LD2 LADDER PARTS**

**PART #: ALD2-1**

**REV: A**



SWING HOOKS

**STEP 1**  
 IF YOU HAVE AN ACCESSORY TO HANG, INSTALL SWING HOOKS PROVIDED WITH THE ACCESSORY ON TO TUBE AND CONNECT TO PART 4 WITH BOLTS 2 & 3.

**IMPORTANT NOTE !!!**  
**ONLY HAND TIGHTEN ALL BOLTS UNTIL FULLY ASSEMBLED.**

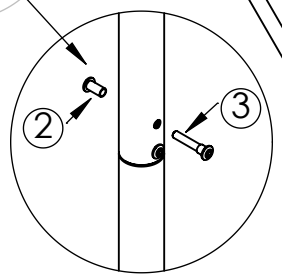
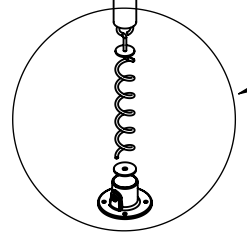
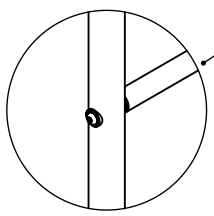
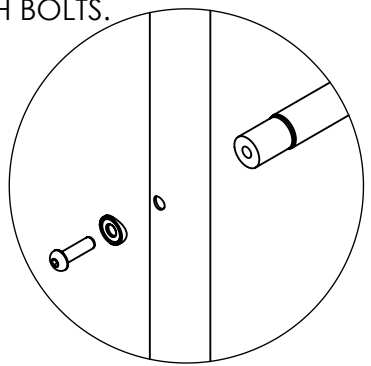
**MK1800KIT MONKEY RUNGS SHOWN FOR POSITION ONLY. NOT INCLUDED IN LD2 KIT.**

**STEP 2**  
 POSITION THESE CLAMPS 12 & 15 FROM **MK1800KIT** ONTO FRAME AND POSITION WITH MONKEY BAR RUNGS. NOTE LOWER CLAMP IS REDUCING.

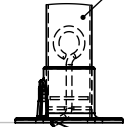
⑮ 48/48 CLAMP

⑫ 48/34 REDUCING CLAMP

**STEP 3**  
 ASSEMBLE LOWER LADDER AS SHOWN AND CONNECT INTO UPPER TUBES WITH BOLTS.



**STEP 4**  
 POSITION FRAME THEN REMOVE LEAVING METAL FEET IN POSITION. SCREW GROUND ANCHOR THROUGH WASHER AND FOOT TO SECURE. PLACE FRAME BACK INTO FEET AND TIGHTEN GRUB SCREW.



ASSEMBLY INSTRUCTIONS

TITLE: LD2 ASSEMBLY

PART #: ALD2-2

REV: A