

IMS CUTTER 45 CT

PLASMA CUTTER (15>45 A)

Ref. 062498



The CUTTER 45 CT is a 45 A plasma cutter with a clean cutting capacity of 20 mm thick on a wide range of materials thanks to the MT/AT 40 torch range. The HF-free arcing system preserves and increases the lifetime of consumables. Designed to be used in difficult environments, it has a very robust mechanics and a user friendly control panel. It is pre-wired for use on automatic cutting tables.

MAXIMUM PRODUCTIVITY

- Faster cutting speed **using oxygen**.
- **Cuts all types of steel** (mild, stainless, tempered, HLE), aluminium, copper, etc.
- **Optimised cooling using** the ventilation corridor that helps insulating the electronic components from the dust.
- Consumables setting up is easy for maximum productivity.
- Duty cycle 41 A at 60 % (40°C).

FV **Flexible Voltage Hose (85 to 265V)**, accepts very long network connections (100 m).

PFC **PFC technology**, the electrical network is better exploited and allows an energy saving of 30%.



TORCH RANGE MT 70 / AT 70 (6/12 m)

- **Disconnectable torch** for easy storage and replacement.
- **Effective cutting:** air cooled torch body for a high arc stability at the different paces.
- **Easy to use** trigger mechanism for more **safety**.
- Designed to be **shock and heat resistant**.
- Cutting depth **5 mm deeper** than a standard torch.

EFFECTIVE IN EVERY WORKPLACE

- **User friendly interface :**
 - 3 working modes : plain metal sheet / open metal sheet / locked
 - manual setting of the air pressure using front screen chart.
- **HF-free ignition** to prevent disturbances that could damage nearby electronic equipment.
- **Compatible with CNC kit** for automatic cutting tables.
- **Disconnectable earth cable** for easy storage and simple replacement.

DESIGNED TO LAST

- **Reinforced metal case** & non slip rubber pads.
- **IP 23** certified for external use.
- Compact & portable.

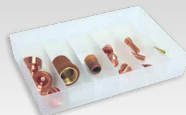
ACCESSORIES & CONSUMABLES (options)

For use on cutting table:



CNC kit
039988

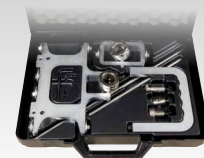
Torch AT-70 auto.
70 A (50%)
6 m - 037526
12 m - 037533



Consumables box
For MT-70 manual
20/50 A - 061613



Torch MT-70 manual
70 A (50%)
6 m - 037502
12 m - 037519



Cutting, chamfering and guiding
kit for Plasma MT torches
038653



Trolley
for MT-70 Torch
037977

Supplied with :	2 m 10 mm ²	MT 70 6/12 m
ref. 062498	✓	optional

PERFORMANCES

Capacity	MT 70 (optional)
Separation	30 mm
Clean cut	25 mm
Piercing	12 mm

50/60 Hz	A	I ₂ A	mm (max)						AIR SYSTEM		EN 60974-1 (40°C)	cm	kg	IP	Protected & compatible power generator (+/-15%)
			Piercing		Clean cut		Separation		Input Pressure (bar)	L/min					
110V 1~	32	15 → 30	Fe	Al/CrNi	Fe	Al/CrNi	Fe	Al/CrNi	5.5 → 7	115	21 A @ 60%	48 x 37 x 23	14	IP 23	10.5 kW
230V 1~	16	15 → 45	5	3	10	8	15	10		185	41 A @ 60%				