

TESSUTO
FABRIC / TISSU

KSTRETCH

PERFORMANCES

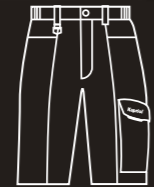


TAGLIE / COLORI
SIZE/COLORS TAILLE/COLORS



PANTALONI / PANTS / PANTALONS
62% Cotton - 35% Nylon 37.5 Cocona - 3% Elastane - 165 gr/m²
Reinforcements: 100% Nylon 500D Oxford - 238 gr/m²

| Color #01 | Size | S | M | L | XL | XXL | XXXL |
|-----------|------|-------|-------|-------|-------|-------|-------|
| Art | | 36920 | 36921 | 36922 | 36923 | 36924 | 36925 |
| Color #02 | Size | S | M | L | XL | XXL | XXXL |
| Art | | 36940 | 36941 | 36942 | 36943 | 36944 | 36945 |



SHORT / SHORTS / BERMUDA
62% Cotton - 35% Nylon 37.5 Cocona - 3% Elastane - 165 gr/m²
Reinforcements: 100% Nylon 500D Oxford - 238 gr/m²

| Color #01 | Size | M | L | XL | XXL | XXXL |
|-----------|------|-------|-------|-------|-------|-------|
| Art | | 36915 | 36916 | 36917 | 36918 | 36919 |



SOFT SHELL
54% Nylon - 38% Nylon 37.5 Cocona - 8% Elastane - 220 gr/m²

| Color #02 | Size | M | L | XL | XXL | XXXL |
|-----------|------|-------|-------|-------|-------|-------|
| Art | | 36910 | 36911 | 36912 | 36913 | 36914 |



PILE / FLEECE / POLAIRE
60% Polyester - 40% Nylon 37.5 Cocona - 180 gr/m²
Reinforcements: 54% Nylon - 38% Nylon 37.5 Cocona - 8% Elastane - 220 gr/m²

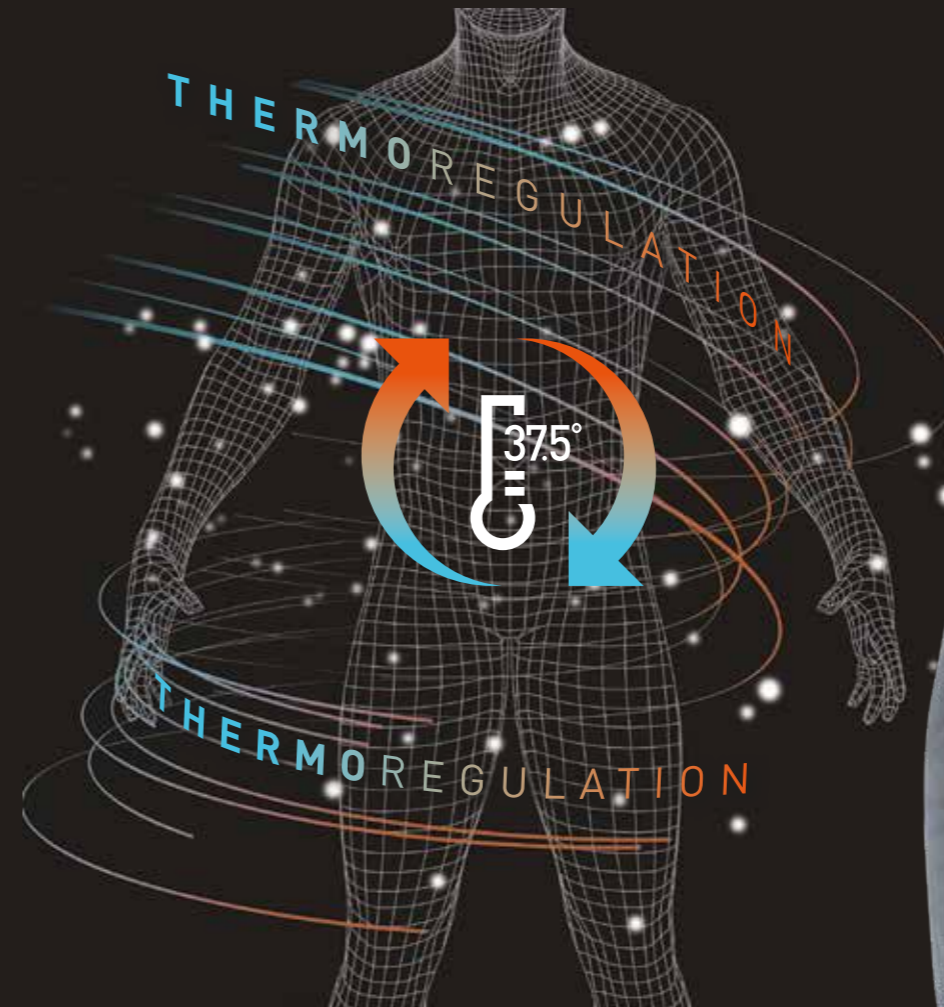
| Color #02 | Size | M | L | XL | XXL |
|-----------|------|-------|-------|-------|-------|
| Art | | 35180 | 35181 | 35182 | 35183 |



T-SHIRT
70% Nylon 37.5 Cocona - 30% Polyester double face mesh - 120 gr/m²

| Color #02 | Size | M | L | XL | XXL |
|-----------|------|-------|-------|-------|-------|
| Art | | 35185 | 35186 | 35187 | 35188 |

THE MOST ADVANCED LINE
FOR YOUR PROFESSION
& FREE TIME



Morganti Spa
Via alla Santa, 11 - 23862 Civate (LC)
PH +39 0341 215411
FAX + 39 0341 215400
kapriol@kapriol.com

www.kapriol.com

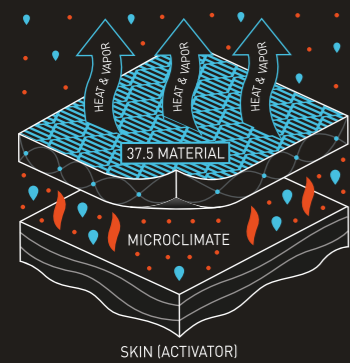


Kapriol[®]



37.5[®] TECHNOLOGY





DYNAMIC 37.5

LA LINEA PIÙ EVOLUTA
PER LA TUA PROFESSIONE
E IL TEMPO LIBERO

THE MOST ADVANCED LINE FOR
YOUR PROFESSION AND FREE TIME

LA LIGNE LA PLUS AVANCÉE
POUR VOTRE PROFESSION ET
VOTRE TEMPS LIBRE

Kapriol Dynamic 37.5® è la collezione progettata per offrire una gamma completa di abbigliamento ai professionisti che necessitano il massimo livello di comfort e di prestazioni durante le attività lavorative e il tempo libero. Capi facili da indossare e facili da mantenere, sono la risposta più evoluta per il professionista più esigente. La Tecnologia 37.5® è certificata "Skin Friendly" (DIN EN ISO 10993 5 2009 10) in conformità agli standard europei.

Kapriol Dynamic 37.5® is the collection designed to offer a complete range of clothing to professionals who need the highest level of comfort and performance during work and leisure activities. Easy to wear and easy to maintain garments, they are the most advanced answer for the most demanding professional. 37.5® Technology is certified "Skin Friendly" (DIN EN ISO 10993 5 2009 10) in compliance with European standards.

Kapriol Dynamic 37.5® est la collection conçue pour offrir une gamme complète de vêtements aux professionnels qui ont besoin du plus haut niveau de confort et de performance pendant le travail et les loisirs. Des vêtements faciles à porter et à entretenir, ils sont la réponse la plus avancée pour les professionnels les plus exigeants. La technologie 37.5® est certifiée "Skin Friendly" (DIN EN ISO 10993 5 2009 10) conformément aux normes européennes.

37.5® TECHNOLOGY

DALLE "PARTICELLE ATTIVE" DI ORIGINE VULCANICA LA NUOVA TECNOLOGIA 37.5®

IT La tecnologia brevettata 37.5® utilizza particelle attive costituite da sabbia vulcanica che catturano l'energia infrarossa (IR) emessa dal corpo. In presenza di vapore acqueo le particelle accelerano l'evaporazione raffrescando il corpo; in assenza di umidità, restituiscono l'energia (IR) sotto forma di calore, mantenendo costante la temperatura corporea a 37.5°.

Le particelle attive sono incorporate nel filamento e non possono essere eliminate dal lavaggio. 37.5® Technology aiuta a mantenere il corpo alla temperatura interna ideale, migliora il comfort e ritarda l'affaticamento.

FROM THE "ACTIVE PARTICLES" OF VOLCANIC ORIGIN, THE NEW 37.5® TECHNOLOGY

EN The patented 37.5® technology uses active particles made of volcanic sand that capture the infrared energy (IR) emitted from the body. In the presence of water vapor the particles accelerate evaporation by cooling the body; in the absence of humidity, they return energy (IR) in the form of heat, maintaining constant the body temperature at 37.5°.

Active particles are incorporated into the fiber and cannot be removed by washing. 37.5® Technology helps to keep the body at the ideal internal temperature, improves comfort and delays fatigue.

DES "PARTICULES ACTIVES" D'ORIGINE VOLCANIQUE, LA NOUVELLE TECHNOLOGIE 37.5®

FR La technologie brevetée 37.5® utilise des particules actives de sable volcanique qui capturent l'énergie infrarouge (IR) émise du corps. En présence de vapeur d'eau, les particules accélèrent l'évaporation en refroidissant le corps; en l'absence d'humidité, elles restituent l'énergie (IR) sous forme de chaleur, en maintenant la température corporelle constante à 37.5°.

Les particules actives sont incorporées dans le filament et ne peuvent pas être éliminées par lavage. La technologie 37.5® aide à maintenir le corps à la température interne idéale, améliore le confort et retarde la fatigue.



**AMPIO CAPPUCCIO
REGOLABILE**
LARGE ADJUSTABLE
HOOD
GRANDE CAPUCHE
RÉGLABLE

**TASCA AL PETTO
CON ZIP**
ZIPPED CHEST
POCKET
POCHE POITRINE
ZIPPEE

**REGOLAZIONE POLSI
CON CHIUSURA A
VELCRO**
CUFFS ADJUSTMENT
WITH VELCRO
FASTENER
RÉGLAGE DES
POIGNETS AVEC
FERMETURE VELCRO



**TASCA CARGO CON
SOFFIETTI LATERALI**
CARGO POCKET WITH
SIDE BELLOWS
POCHE CARGO AVEC
SOUFFLETS LAT RAUX

**TASCA PORTA METRO
/ TELEFONO CON
ALAMARO DI SICUREZZA**
RULE/PHONE POCKET
WITH VELCRO TAPE
FASTENING

**POCHE TELEFONO
/ MÈTRE AVEC
FERMETURE VELCRO**

**TASCA PORTA
GINOCCHIERA**
KNEEPAD HOLDER
POCKET
POCHE PORTE-
GENOUILLÈRE

