

SINGLE-ENDED BEAM  
**RL32018S**

Stainless Steel, Environmentally Sealed, NTEP Certified 1:5,000 Class III Multiple Cell, IP66



Picture is a representation of actual product.

Approvals



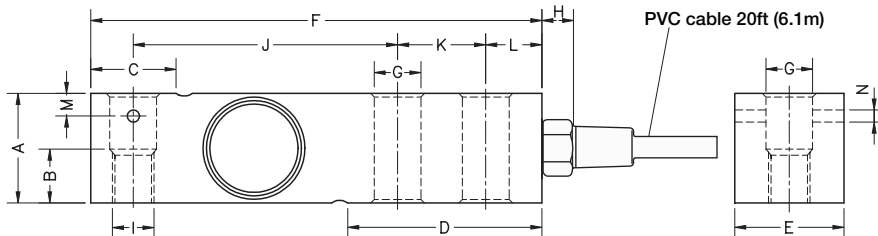
Order Information

Load Rating	Part #	Est. Weight	Price
<b>NTEP Certified</b>			
1,000 lb	<b>189164</b>	3 lb	Consult
2,000 lb	<b>189165</b>	3 lb	Consult
2,500 lb	<b>189166</b>	3 lb	Consult
4,000 lb	<b>189167</b>	3 lb	Consult
5,000 lb SE	<b>189168</b>	3 lb	Consult
5,000 lb LE	<b>189169</b>	5 lb	Consult
10,000 lb	<b>189170</b>	5 lb	Consult
<b>Non-NTEP Certified</b>			
250 lb	<b>189162</b>	3 lb	Consult
500 lb*	<b>189163</b>	3 lb	Consult
15,000 lb*	<b>189171</b>	10 lb	Consult
20,000 lb*	<b>189172</b>	10 lb	Consult

SE=small envelope; LE=large envelope  
\*Pending NTEP

Dimensions

Rated Capacity	A	B	C	D	E	F	G	H	I	J	K	L	M	N
<b>lb/in</b>														
250 to 500	1.00	0.59	0.96	2.20	1.24	5.12	0.53	0.70	1/2-20 UNF	3.00	1.00	0.62	0.25	0.13
1,000 to 5,000 SE	1.24	0.59	0.96	2.20	1.24	5.12	0.53	0.70	1/2-20 UNF	3.00	1.00	0.62	0.25	0.13
5,000 LE to 10,000	1.50	-	1.45	2.99	1.50	6.75	0.80	0.70	3/4-16 UNF	3.75	1.50	0.75	-	-
15,000 to 20,000	2.00	-	-	4.00	2.00	8.75	1.06	-	1-14 UNS	4.90	2.00	1.00	-	-



Interchangeable Products

RICE LAKE WEIGHING SYSTEMS	
<b>RL35023S</b> .....	page 114
VPG® SENSORTRONICS®	
<b>65023S</b> .....	page 283
VPG® SENSORTRONICS®	
<b>65023SS</b> .....	page 282
VPG® CELTRON	
<b>SQB-HSS</b> .....	page 192

Weigh Module Available

RICE LAKE WEIGHING SYSTEMS	
<b>RL50210TA</b> .....	page 31
RICE LAKE WEIGHING SYSTEMS	
<b>RL1800 Series</b> .....	page 42

Specifications

- Full Scale Output:**  
3.0 mV/V ±0.05% current matched
- Output Resistance:**  
350 (± 3) ohm
- Input Resistance:**  
400 (± 20) ohm
- Material/Finish:**  
Stainless steel
- Temperature:**  
Compensated range  
14 °F to 104 °F (-10 °C to 40 °C)  
Operating range  
0 °F to 150 °F (-18 °C to 65 °C)
- Seal Type:**  
Environmentally sealed, IP66
- Safe Overload:**  
150% full scale
- Rated Excitation:**  
10 VDC (15 V maximum)
- Combined Error:**  
0.017% full scale
- Insulation Resistance:**  
>5,000 megohm
- Deflection:**  
0.2 to 0.4 mm
- Cable Length:**  
20 ft
- Cable Color Code:**  
Red +Excitation  
Black -Excitation  
Green +Signal  
White -Signal
- Warranty:**  
Two-year limited
- Approvals:**  
cFMus  
NTEP 18-106

RICE LAKE  
LOAD CELLS