

HYTEK TOOLS®

www.HYTEKTOOLS.com

FIBER TEK™

CUBE STYLE FIBER LASER

3x4



HytekTools® Official Registered Trademark - WeldTEK™ 2022 by HYTEKTOOLS®

HYTEK TOOLS®

(218) 454-3875
mj@hytekttools.com

FIBER TEK™
3X4

FIBER LASER CUTTING MACHINE

Big Machine Power in a Smaller Footprint!



HYTEK TOOLS®

(218) 454-3875
mj@hytekttools.com

FIBER TEK™
3X4

EFFICIENT - SAFE WORKFLOW

The 3x4 is a Great Option for Smaller Shop Footprints
or Educational Settings



HYTEK TOOLS®

(218) 454-3875
mj@hytekttools.com

FIBER TEK™
3X4

FIBER LASER SOURCE - IPG PHOTONICS

Fiber Laser Source: IPG Photonics Product and Support in USA
Laser Source Life Cycle is roughly 100,000 hours
No Maintenance Required!



UNMATCHED RELIABILITY, SUPPORT

The Heart of Laser Machinery: US Based Support with IPG Photonics

Fiber Laser Power Range:



1000w-1kw IPG
2000w-2kw IPG
3000w-3kw IPG
4000w-4kw IPG
6000w-6kw IPG
8000w-8kw IPG
12000w-12kw IPG

HYTEK TOOLS®

(218) 454-3875
mj@hytekttools.com

FIBER TEK™
3X4

LASER HEAD SELECTION

Laser Heads Are Very Important To Get Right!

RAYTOOLS - LASER HEAD

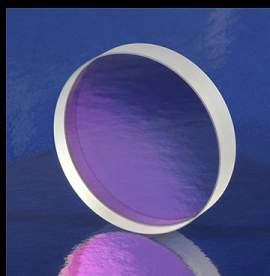
RAYTOOLS @ 1-4kw Fiber Laser Cutters



RAYTOOLS

BACKUP RECOMMENDED

Hytek Tools Will Provide a 2nd Laser Head
at Time of Purchase for Wholesale Cost



HYTEK TOOLS®

(218) 454-3875
mj@hytekttools.com

FIBER TEK™
3X4

TABLE CONSTRUCTION AND HIGHLIGHTS

- 3ft x 4ft cut dimensions w/ push through and rear Loading
- IPG Photonics (USA) laser source
- Frame 3/8" welded steel tube
- Aviation grade aluminum gantry
- Blade style table surface
- X, Y axis - helical rack and pinion
- HiWin linear high precision stainless steel guide rails & bearings
- 4000 lbs table weight
- 40 ton pressed 6061 laser car gantry material

MACHINE ELECTRONICS

- 1000w-3000w fiber laser (see capability chart below)
- Yaskawa servo drivers & motors
- Schneider electrical components
- Water chiller & exhaust fan included



HYTEK TOOLS®

(218) 454-3875
mj@hytekttools.com

FIBER TEK™
3X4

MACHINE STATISTICS - POWER - CAM

- Up to 1200in/min
- X, Y, cut accuracy ± 0.001 "
- X, Y, repeat accuracy ± 0.001 "
- Cypcut CAM Software (latest version)
- CAD Program on request
- 1000w AC220V single phase @ 50 amp
- 2000w-3000w AC 220v-600v three phase

HYTEK TOOLS WARRANTY AND SUPPORT

- Lifetime hardware support from Hytek Tools
- Two year parts warranty bumper to bumper
- 2 Year Laser Source Warranty (Best in Industry)
- Custom tech videos on request



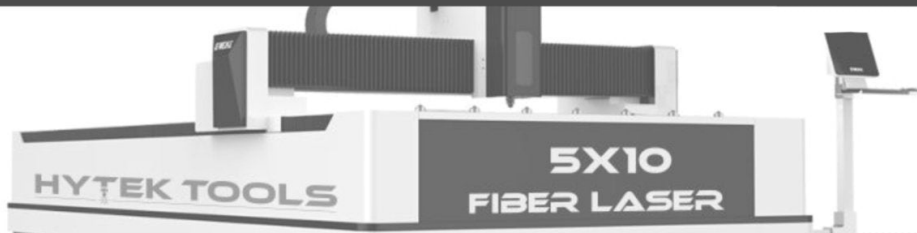
HYTEK TOOLS®

(218) 454-3875
mj@hytekttools.com

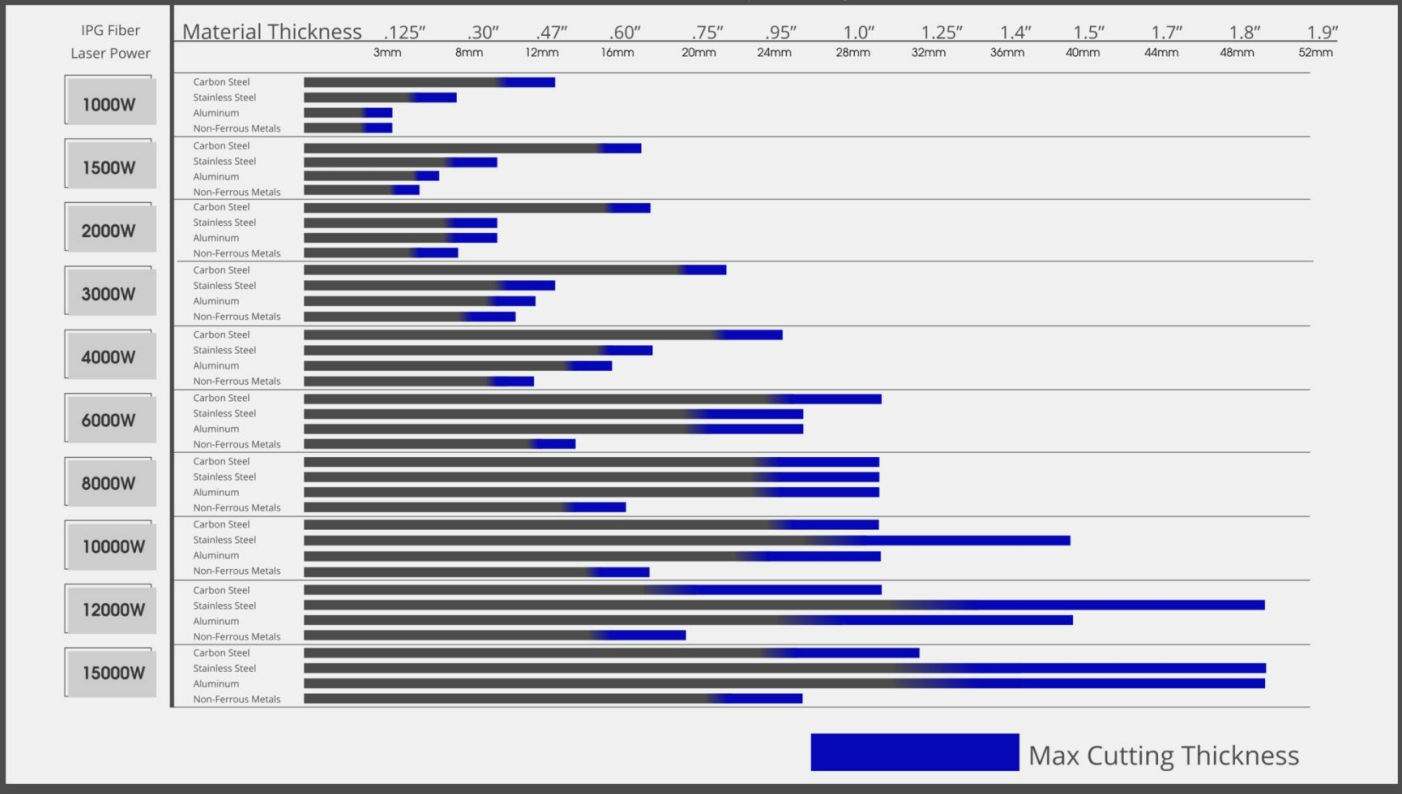
FIBER TEK™
3X4

FIBERTEK™ CUT CAPABILITY/THICKNESS

A General Guide for FIBERTEK CUT ABILITIES



Fiber Laser - Capability Guide



HYTEK TOOLS®

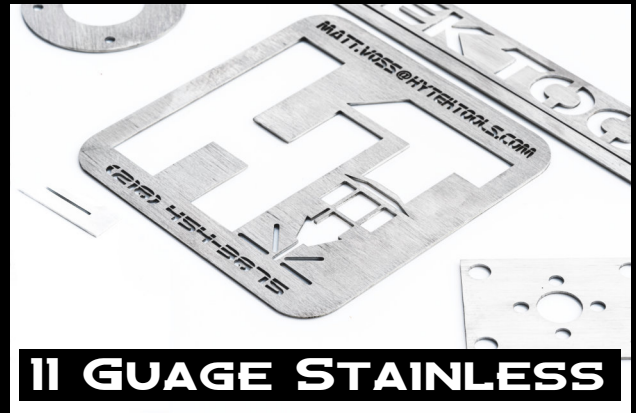
(218) 454-3875
mj@hytekttools.com

FIBER TEK™
3X4

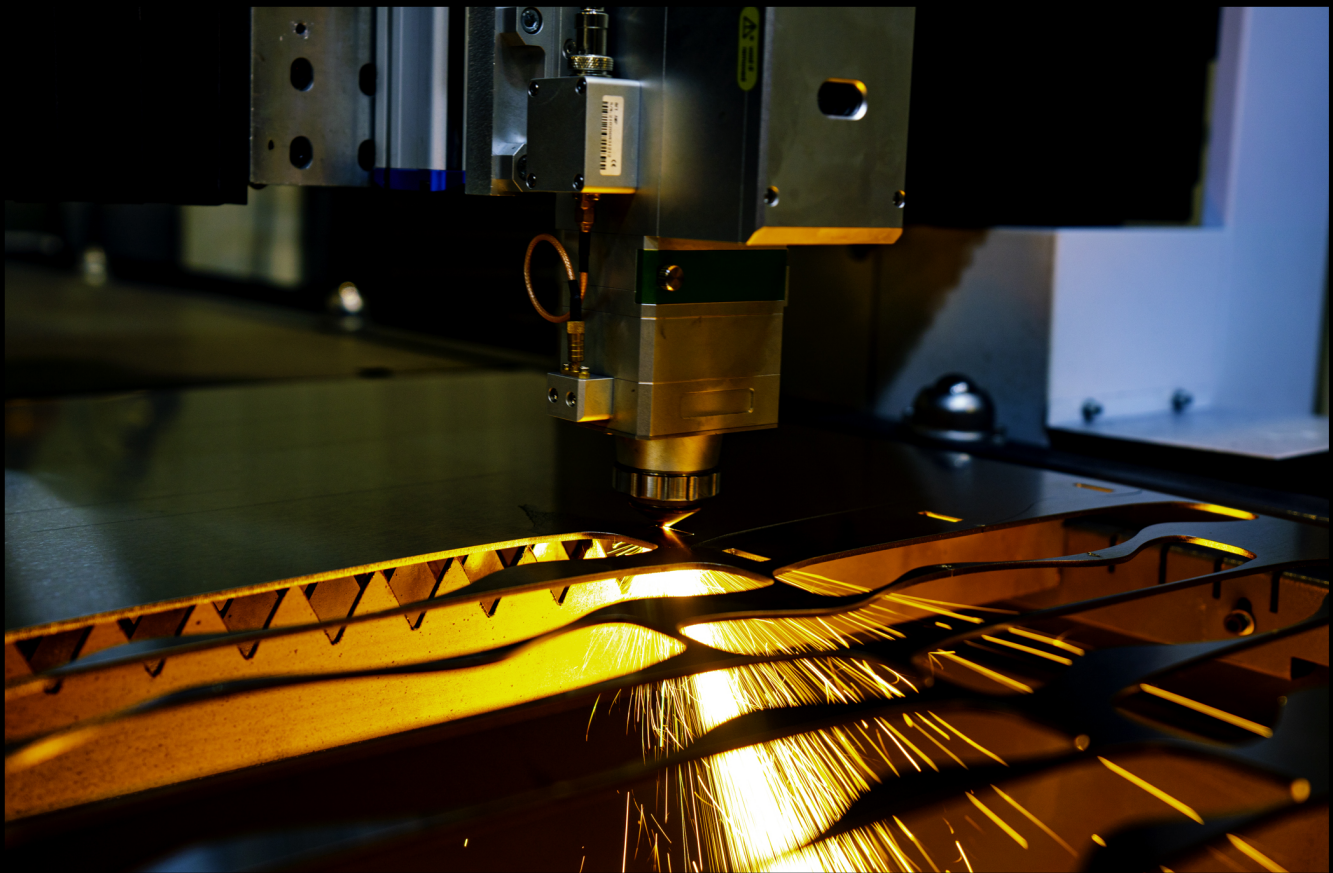
LASER CUT SAMPLES AND CLOSE-UPS



1" MILD STEEL



11 GAUGE STAINLESS



HYTEK TOOLS®

(218) 454-3875
mj@hytekttools.com

FIBER TEK™
3X4

CONSUMABLES IN STOCK

Order Online - Lense Nozzles Ships within 24 Hours

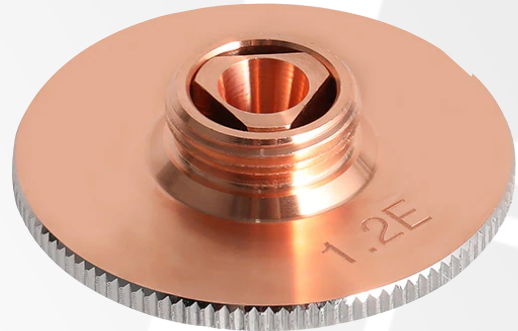
LASER LENSE

\$75 - 10pk



LASER NOZZLES

\$85 - 10pk



Scan To Order



HYTEK TOOLS®

(218) 454-3875
mj@hytekttools.com

FIBER TEK™
3X4

FIBERTEK WATER CHILLER RANGE

S&A Water Chiller Range 1000w-3000w Industrial Chillers



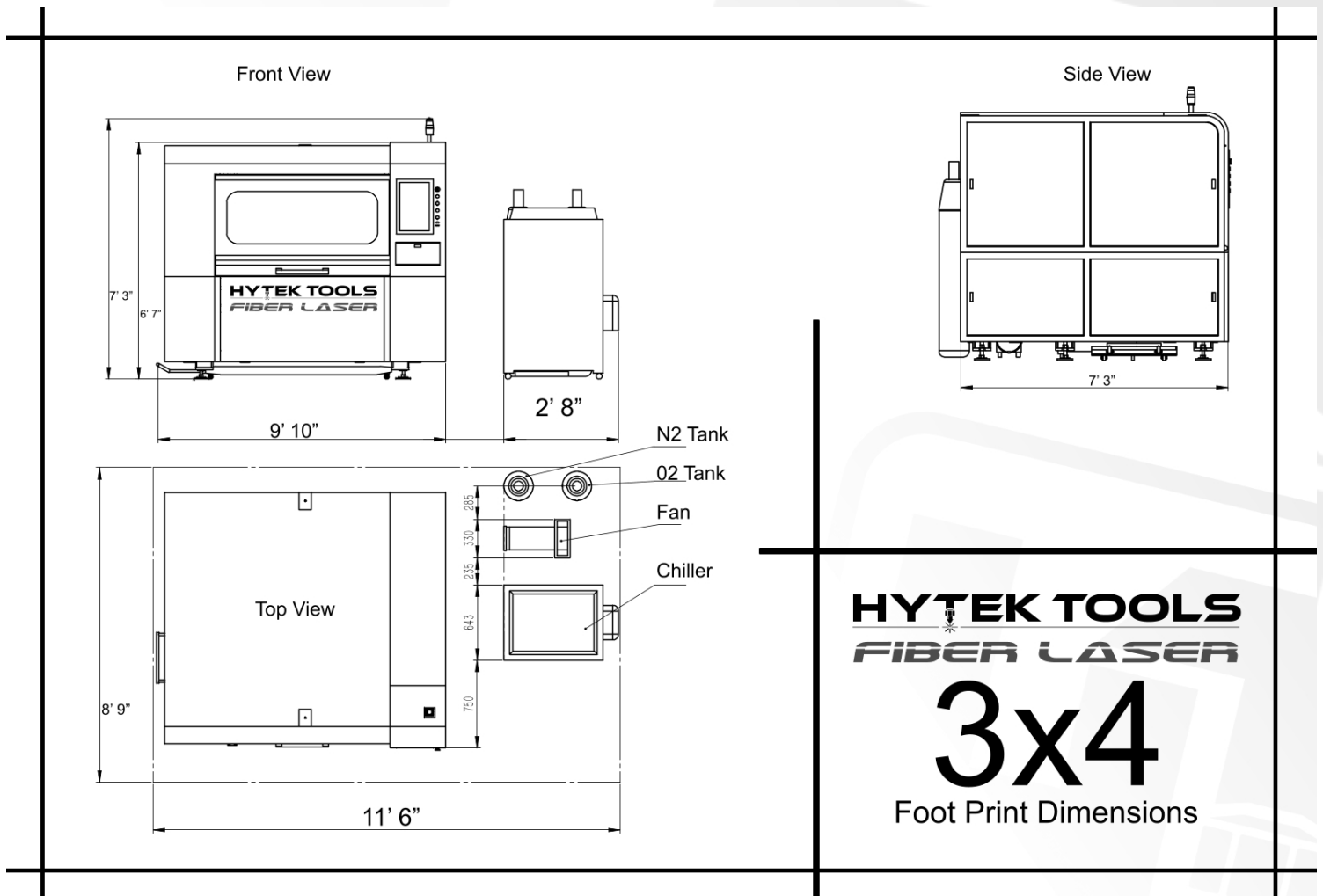
HYTEK TOOLS®

(218) 454-3875
mj@hytekttools.com

FIBER TEK™
3X4

FIBERTEK™ 3X4 FOOTPRINT

In Feet - Inches (Note Allowance For Accesories)



HYTEK TOOLS®

(218) 454-3875
mj@hytekttools.com

FIBER TEK™
3X4

FIBERTEK™ DELIVERY TIMELINE

Made to order in 12-14 weeks



www.HYTEKTOOLS.com
mj@hytekttools.com

Scan To Order



HytekTools® Official Registered Trademark - WeldTEK™ 2022 by HYTEKTOOLS®