

HYTEK TOOLS®

www.HYTEKTOOLS.com

FIBERTEK™

MINI CUBE FIBER LASER

2X2



HytekTools® Official Registered Trademark - WeldTEK™ 2022 by HYTEKTOOLS®

HYTEK TOOLS®

(218) 839-5852
mj@hytekttools.com

FIBERTEK™ 2X2

FIBER LASER SOURCE - IPG PHOTONICS

Fiber Laser Source: IPG Photonics Product and Support in USA
Laser Source Life Cycle is roughly 100,000 hours
No Maintenance Required!



UNMATCHED RELIABILITY, SUPPORT

The Heart of Laser Machinery: US Based Support with IPG Photonics

Fiber Laser Power Range:

1000w-1kw IPG
2000w-2kw IPG
3000w-3kw IPG



HYTEK TOOLS®

(218) 839-5852
mj@hytekttools.com

FIBERTEK™ EX2

LASER HEAD SELECTION

Laser Heads Are Very Important To Get Right!

RAYTOOLS - LASER HEAD

RAYTOOLS @ 1-3kw Fiber Laser Cutters



RAYTOOLS

BACKUP RECOMMENDED

Hytek Tools Will Provide a 2nd Laser Head
at Time of Purchase for Wholesale Cost

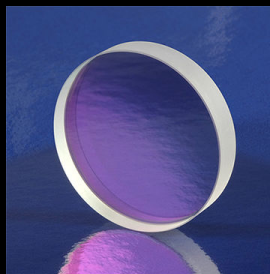


TABLE CONSTRUCTION AND HIGHLIGHTS

- 2ft x 2ft cut dimensions w/ push through and rear Loading
- IPG Photonics (USA) laser source
- Frame 3/8" welded steel tube
- Aviation grade aluminum gantry
- Blade style table surface and/or fixture vise
- Linear drive / electromagnetic induction motors for superior accuracy, speed and long service life.
- Linear high precision stainless steel guide rails & bearings
- 2000 lbs table weight
- 40 ton pressed 6061 laser car gantry material

MACHINE ELECTRONICS

- 1000w-3000w fiber laser (capability chart below)
- Schneider electrical components
- Water chiller & exhaust fan included



HYTEK TOOLS®

(218) 839-5852
mj@hytekttools.com

FIBERTEK™
2X2

MACHINE STATISTICS - POWER - CAM

- Up to 4000in/min
- X, Y, cut accuracy $\pm 0.001''$
- X, Y, repeat accuracy $\pm 0.001''$
- Cypcut CAM Software (latest version)
- CAD Program on request
- 1000w AC220V single phase @ 50 amp
- 2000w-3000w AC220v-600v three phase

HYTEK TOOLS WARRANTY AND SUPPORT

- Lifetime hardware support from Hytek Tools
- Two year parts warranty bumper to bumper
- 2 Year Laser Source Warranty (Best in Industry)
- Custom tech videos on request



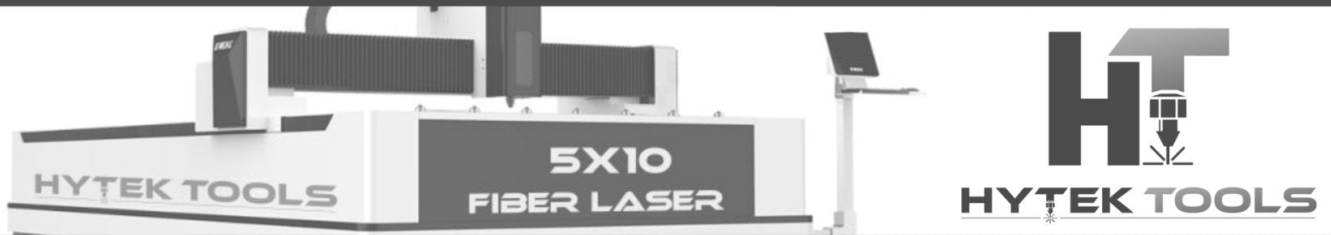
HYTEK TOOLS®

(218) 839-5852
mj@hytekttools.com

FIBERTEK™ 2X2

FIBERTEK™ CUT CAPABILITY/THICKNESS

A General Guide for FIBERTEK CUT ABILITIES



Fiber Laser - Capability Guide

IPG Fiber Laser Power	Material Thickness	.125"	.30"	.47"	.60"	.75"	.95"	1.0"	1.25"	1.4"	1.5"	1.7"	1.8"	1.9"
		3mm	8mm	12mm	16mm	20mm	24mm	28mm	32mm	36mm	40mm	44mm	48mm	52mm
1000W	Carbon Steel	[Bar chart showing capability up to ~1.25"]												
	Stainless Steel	[Bar chart showing capability up to ~1.0"]												
	Aluminum	[Bar chart showing capability up to ~0.75"]												
	Non-Ferrous Metals	[Bar chart showing capability up to ~0.60"]												
1500W	Carbon Steel	[Bar chart showing capability up to ~1.5"]												
	Stainless Steel	[Bar chart showing capability up to ~1.25"]												
	Aluminum	[Bar chart showing capability up to ~1.0"]												
	Non-Ferrous Metals	[Bar chart showing capability up to ~0.75"]												
2000W	Carbon Steel	[Bar chart showing capability up to ~1.75"]												
	Stainless Steel	[Bar chart showing capability up to ~1.5"]												
	Aluminum	[Bar chart showing capability up to ~1.25"]												
	Non-Ferrous Metals	[Bar chart showing capability up to ~1.0"]												
3000W	Carbon Steel	[Bar chart showing capability up to ~2.0"]												
	Stainless Steel	[Bar chart showing capability up to ~1.75"]												
	Aluminum	[Bar chart showing capability up to ~1.5"]												
	Non-Ferrous Metals	[Bar chart showing capability up to ~1.25"]												
4000W	Carbon Steel	[Bar chart showing capability up to ~2.25"]												
	Stainless Steel	[Bar chart showing capability up to ~2.0"]												
	Aluminum	[Bar chart showing capability up to ~1.75"]												
	Non-Ferrous Metals	[Bar chart showing capability up to ~1.5"]												
6000W	Carbon Steel	[Bar chart showing capability up to ~2.5"]												
	Stainless Steel	[Bar chart showing capability up to ~2.25"]												
	Aluminum	[Bar chart showing capability up to ~2.0"]												
	Non-Ferrous Metals	[Bar chart showing capability up to ~1.75"]												
8000W	Carbon Steel	[Bar chart showing capability up to ~2.75"]												
	Stainless Steel	[Bar chart showing capability up to ~2.5"]												
	Aluminum	[Bar chart showing capability up to ~2.25"]												
	Non-Ferrous Metals	[Bar chart showing capability up to ~2.0"]												
10000W	Carbon Steel	[Bar chart showing capability up to ~3.0"]												
	Stainless Steel	[Bar chart showing capability up to ~2.75"]												
	Aluminum	[Bar chart showing capability up to ~2.5"]												
	Non-Ferrous Metals	[Bar chart showing capability up to ~2.25"]												
12000W	Carbon Steel	[Bar chart showing capability up to ~3.25"]												
	Stainless Steel	[Bar chart showing capability up to ~3.0"]												
	Aluminum	[Bar chart showing capability up to ~2.75"]												
	Non-Ferrous Metals	[Bar chart showing capability up to ~2.5"]												
15000W	Carbon Steel	[Bar chart showing capability up to ~3.5"]												
	Stainless Steel	[Bar chart showing capability up to ~3.25"]												
	Aluminum	[Bar chart showing capability up to ~3.0"]												
	Non-Ferrous Metals	[Bar chart showing capability up to ~2.75"]												

Max Cutting Thickness

HYTEK TOOLS®

(218) 839-5852
mj@hytekttools.com

FIBERTEK™ 2X2

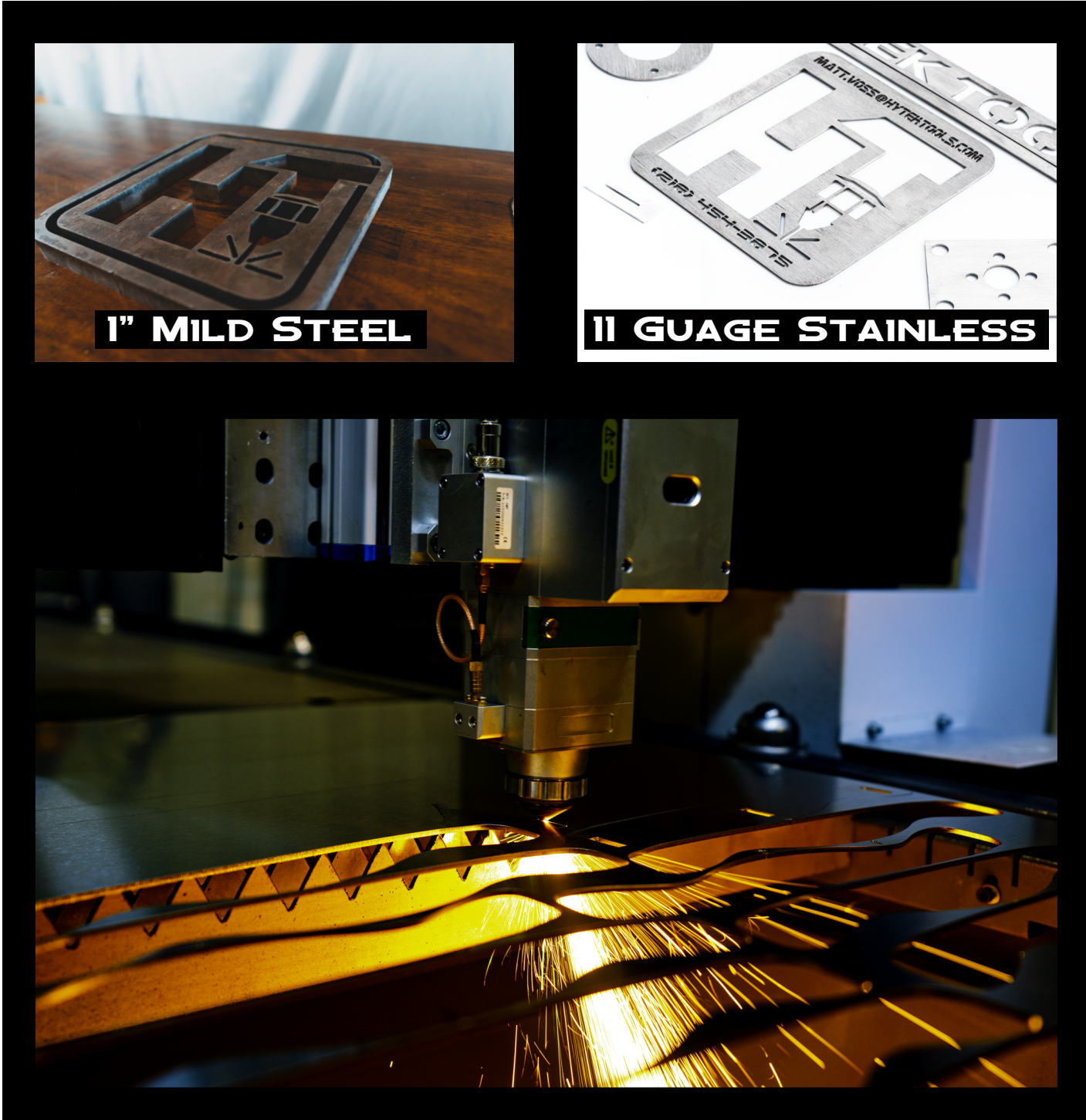
LASER CUT SAMPLES AND CLOSE-UPS



1" MILD STEEL



11 GAUGE STAINLESS



CONSUMABLES IN STOCK

Order Online - Lense Nozzles Ships within 24 Hours

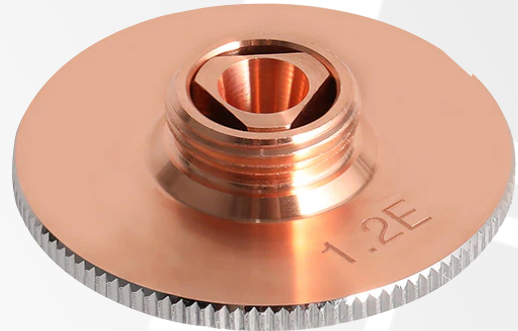
LASER LENSE

\$75 - 10pk

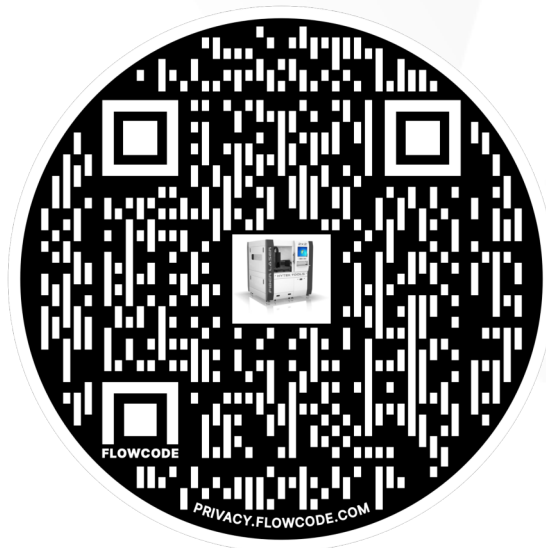


LASER NOZZLES

\$85 - 10pk



Scan To Order



HYTEK TOOLS®

(218) 839-5852
mj@hytekttools.com

FIBERTEK™ EX2

FIBERTEK WATER CHILLER RANGE

S&A Water Chiller Range 1000w-3000w Industrial Chillers



HYTEK TOOLS®

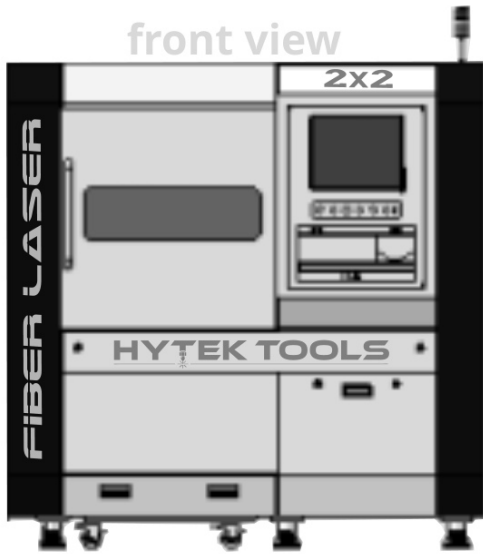
(218) 839-5852
mj@hytekttools.com

FIBERTEK™ 2x2

FIBERTEK™ 5X10 FOOTPRINT

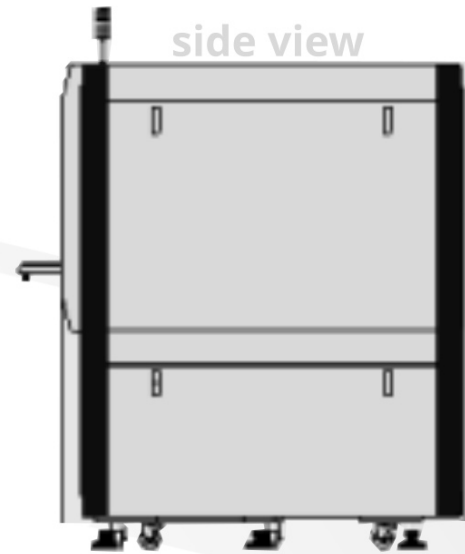
In Feet - Inches (Note Allowance For Accesories)

front view



5'-11"

side view



5'-0"

HYTEK TOOLS
FIBER LASER

2x2

Foot Print Dimensions

HYTEK TOOLS®

(218) 839-5852
mj@hytekttools.com

FIBERTEK™ 2X2

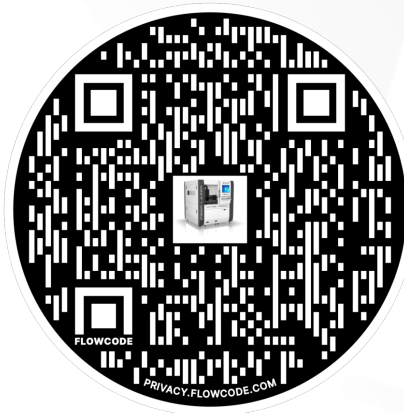
FIBERTEK™ DELIVERY TIMELINE

Made to order in 12-14 weeks



www.HYTEKTOOLS.com
mj@hytekttools.com

Scan To Order



HytekTools® Official Registered Trademark - WeldTEK™ 2022 by HYTEKTOOLS®