

HYTEK TOOLS®

www.HYTEKTOOLS.com

FIBERTEK™ **MODEL D**

FIBER LASER - STEEL SHEET CUTTER



HytekTools® Official Registered Trademark - WeldTEK™ 2022 by HYTEKTOOLS®

HYTEK TOOLS®

(218) 839-5852
sales@hytekttools.com

FIBERTEK™
FULL ENCLOSURE
4X8 5X10 6X12

Specs and Accessories:

- 60" x 120" material cut dimensions max
- 1000w-6000w IPG laser source (3/4" carbon steel, 0.5" Stainless & Aluminum)
- Raytools Auto Height Laser Head
- Z axis precision unilateral stainless steel ball screw
- X,Y stainless steel ball screw transmission
- Linear ball bearing precision rails with electronic auto oil
- CWFL-6000 water chiller & with 8500w cooling capacity
- Exhaust Fan 3hp w/ 10ft by 6" diameter duct included
- Months of consumables included

FIBERTEK Machine electronics

- 4 Yaskawa servo motors
- 4 Yaskawa servo drivers
- Cypcut control software (latest version)
- Windows PC (w/table mounted swing arm)
- AC220v-600v, three phase

FIBERTEK Stats

- Max rapid speed 5000 in/min
- Max working speed 4000 in/min
- X, Y, Z position accuracy $\pm 0.001"$
- X, Y, Z travel accuracy $\pm 0.001"$

Warranties Include:

- Lifetime hardware support from Hytek Tools
- 2 year on-site hardware support (if required)
- Two year parts warranty (Including Laser Source)
- Custom tech videos on request
- 30 Day Buy Back Guarantee

Extras Include:

- Hand delivery by Hytek Tools technicians, including setup and operation demo



HYTEK TOOLS®

(218) 839-5852
sales@hytekttools.com

FIBERTEK™
FULL ENCLOSURE
4X8 5X10 6X12

FIBER LASER SOURCE - IPG PHOTONICS

Fiber Laser Source: IPG Photonics Product and Support in USA
Laser Source Life Cycle is roughly 100,000 hours
No Maintenance Required!



UNMATCHED RELIABILITY, SUPPORT

The Heart of Laser Machinery: US Based Support with IPG Photonics

Fiber Laser Power Range:



1000w-1kw IPG
2000w-2kw IPG
3000w-3kw IPG
4000w-4kw IPG
6000w-6kw IPG

HYTEK TOOLS®

(218) 839-5852
sales@hytekttools.com

FIBERTEK™
FULL ENCLOSURE
4X8 5X10 6X12

LASER HEAD SELECTION

Laser Heads Are Very Important To Get Right!

RAYTOOLS - LASER HEAD

RAYTOOLS @ 1-6kw Fiber Laser Cutters



RAYTOOLS

BACKUP RECOMMENDED

Hytek Tools Will Provide a 2nd Laser Head
at Time of Purchase for Wholesale Cost

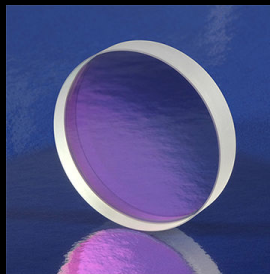


TABLE CONSTRUCTION AND HIGHLIGHTS

- 5ft x 10ft cut dimensions
- IPG Photonics (USA) laser source
- Frame 1/2" welded steel tube
- Aviation grade aluminum gantry
- Blade knife table surface
- X, Y axis - stainless steel ball screw transmission
- HiWin linear high precision stainless steel guide rails & bearings
- 8,000 lbs combined table weight
- 40 ton pressed 6061 laser car gantry material

MACHINE ELECTRONICS

- Machine Electronics
- 1000w-6000w fiber laser (see capability chart below)
- Yaskawa servo drivers & motors
- Schneider electrical components
- Water chiller Exhaust fan

5 TON MAIN FRAME WEIGHT



HYTEK TOOLS®

(218) 839-5852
sales@hytekttools.com

FIBERTEK™
FULL ENCLOSURE
4X8 5X10 6X12

MACHINE STATISTICS - POWER - CAM

- Up to 5000in/min
- X, Y, cut accuracy ± 0.001 "
- X, Y, repeat accuracy ± 0.001 "
- Cypcut CAM Software (latest version)
- CAD Program on request
- 1000w-6000w AC 220v-600v three phase

HYTEK TOOLS WARRANTY AND SUPPORT

- Lifetime hardware support from Hytek Tools
- Two year parts warranty bumper to bumper
- 2 Year Laser Source Warranty (Best in Industry)
- Custom tech videos on request

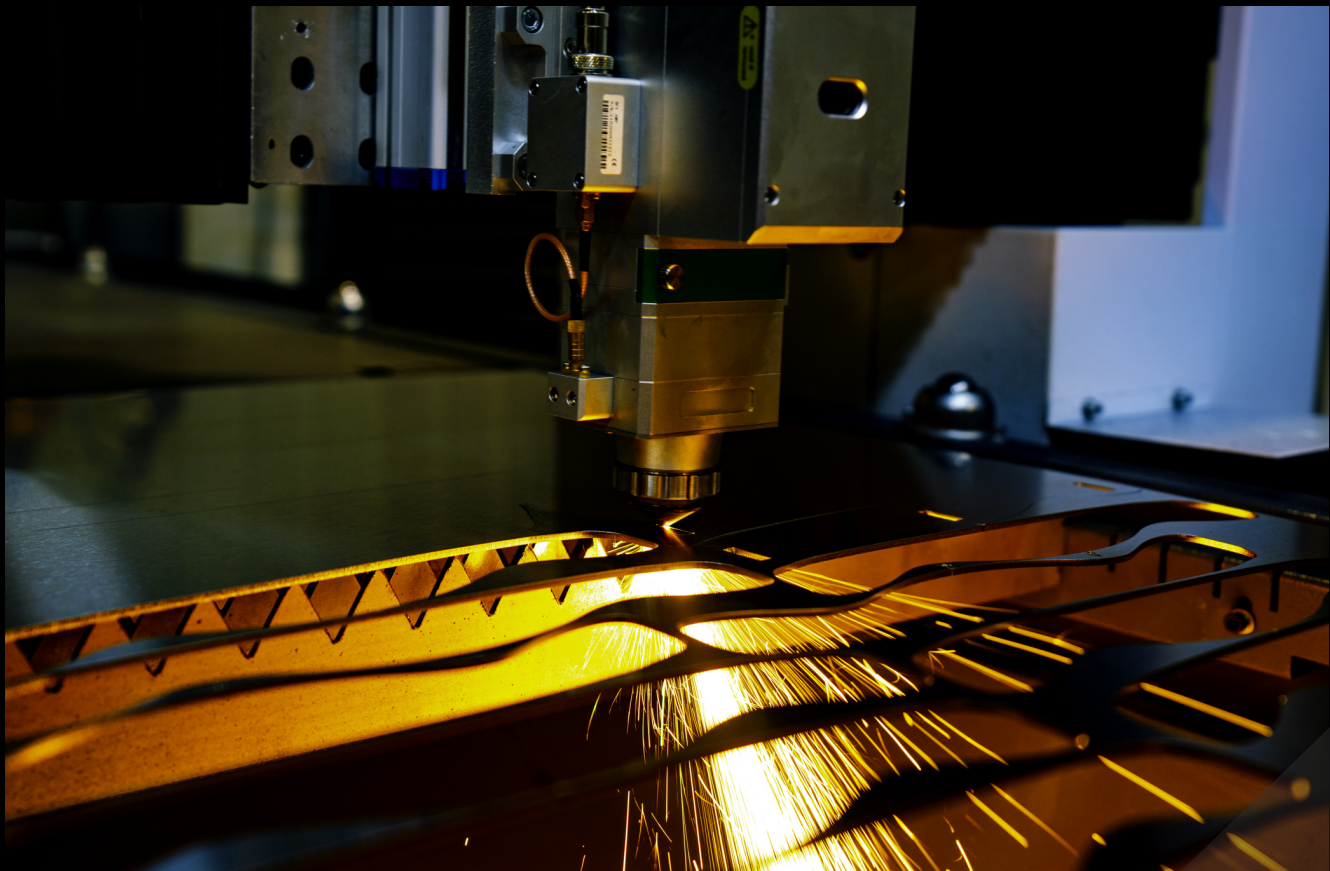
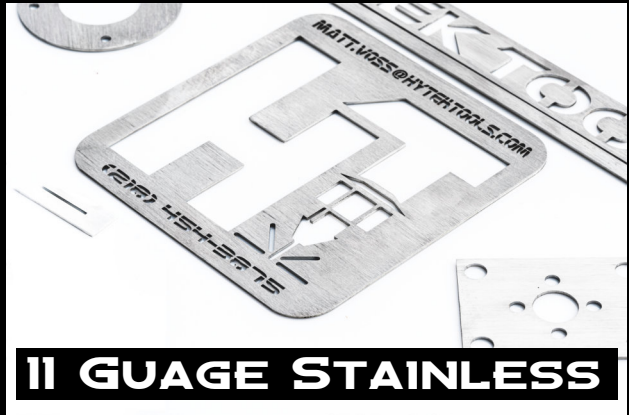


HYTEK TOOLS®

(218) 839-5852
sales@hytektools.com

FIBERTEK™
FULL ENCLOSURE
4X8 5X10 6X12

LASER CUT SAMPLES AND CLOSE-UPS



(218) 839-5852
sales@hytektools.com

FIBERTEK™
FULL ENCLOSURE
4X8 5X10 6X12

CONSUMABLES IN STOCK

Order Online - Lense Nozzles Ships within 24 Hours

LASER LENSE LASER NOZZLES

\$75 - 10pk



\$85 - 10pk



Scan To Order



GAS CONSUMPTION RATES

Pressure Range is 70-250 PSI

For Mass Producers, Gas Banks Are Used

(No Banks or Tanks Included With Machine)



CARBON STEEL

FIBER LASER GAS CONSUMPTION CHART CARBON STEEL - FIBERTEK

GAS Type	(1mm) 0.04" CS	(2mm) 0.08" CS	(3mm) 0.12" CS	(4mm) 0.15" CS	(6mm) 0.24" CS	(8mm) 0.31" CS	(10mm) 0.39" CS	(12mm) 0.47" CS	(16mm) 0.625" CS
Oxygen	14 gph	12 gph	10 gph	8 gph	7 gph	6.5 gph	6 gph	5 gph	5 gph

STAINLESS STEEL

FIBER LASER GAS CONSUMPTION CHART STAINLESS STEEL - FIBERTEK

GAS Type	(1mm) 0.04" SS	(2mm) 0.08" SS	(3mm) 0.12" SS	(4mm) 0.15" SS	(6mm) 0.24" SS	(8mm) 0.31" SS	(10mm) 0.39" SS	(12mm) 0.47" SS	(16mm) 0.625" SS
Nitrogen	8 gph	6 gph	5 gph	5 gph	5 gph	5 gph	5 gph	5 gph	5 gph

FIBERTEK WATER CHILLER RANGE

S&A Water Chiller Range 1000w-6000w Industrial Chillers



HYTEK TOOLS®

(218) 839-5852
sales@hytekttools.com

FIBERTEK™
FULL ENCLOSURE
4X8 5X10 6X12

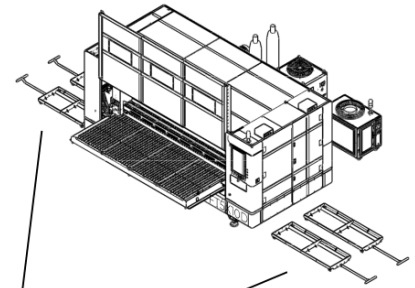
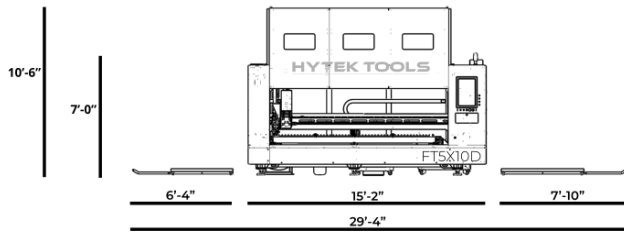
FIBERTEK™ FOOTPRINT

In Feet - Inches (Note Allowance For Accesories)

FIBERTEK 5x10 Model D

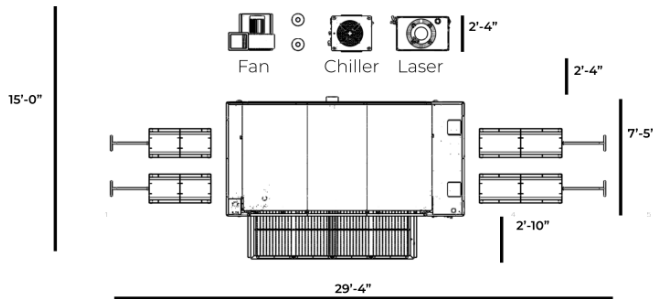
Model Number: FT5X10D Foot Print & Dimensions

FRONT



Part Trolleys

TOP



HYTEK TOOLS®
FIBER LASERS

5X10

Model Number: FT5X10D

Foot Print & Dimensions

HYTEK TOOLS®

(218) 839-5852
sales@hytekttools.com

FIBERTEK™
FULL ENCLOSURE
4X8 5X10 6X12

FIBERTEK™ DELIVERY TIMELINE

Made to order in 12 weeks



jeremy@hytekttools.com

