

Roof Garden Solutions

Atlantis[®]
GREEN CITIES FOR LIFE



www.ecosustainablehouse.com.au PH: 07 5677 0838

Fax: 07 5636 0263

sales@ecosustainablehouse.com.au

Solutions for a Greener Tomorrow

Atlantis Water Neutral Roof Garden Design

Atlantis continues to progressively develop innovative products and systems to convert the concrete jungle into a sustainable Green City.

The use of permeable surfaces allows rainfall to immediately soak into the ground. Rainwater can easily be harvested through underground water carriers and tanks.

Green cities act as a large permeable surface and can be easily built, by incorporating roof top gardens, planter boxes and landscaped podiums.

The added vegetation in cities reduces the urban impact on global warming, provides a sink for carbon and provides a point source solution for stormwater, reducing and even eliminating contaminated runoff into natural water ways.

The results are a sustainable integration between urbanization and nature, creating a sustainable environment.

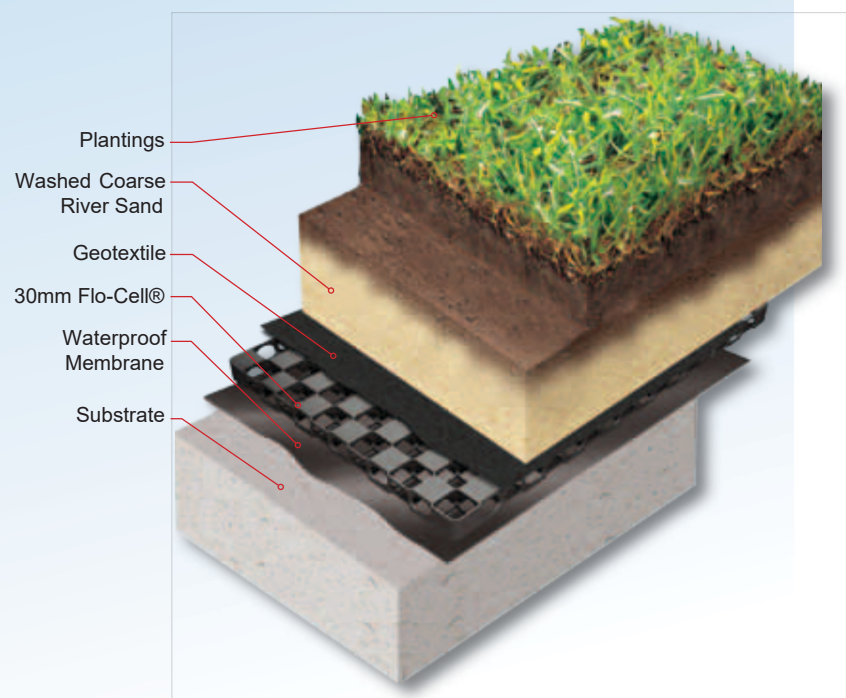
Reduces stormwater runoff from roads and releases clean water.



Installation in Sydney, Australia

ATLANTIS GREEN ROOF BENEFITS

- Produce Oxygen
- Convert CO² emissions
- Absorb & Transform Sunlight
- Reduce Ambient Temperature
- Reduce the Heat of Buildings
- Create Large Catchment Areas
- Capture and Harvest Rainwater
- Reduce Stormwater Runoff & discharge
- Reduce Energy Costs
- Create Habitat for Wildlife



Atlantis Roof Garden Solutions & Installations

The Atlantis® Drainage Cell is an ideal structural and lightweight system designed for Planter Box and Roof Garden applications.

The Atlantis® Drainage Cell allows optimal growing conditions for vegetation through ideal moisture conditions and aeration. Only excess water is removed and the soil profile retains a high moisture content.

In addition the Atlantis® Drainage Cell features water storage cups used for passive irrigation and due to the structural design of the cell, a void space is created, providing aeration and promoting growth for root systems.

The Atlantis® Drainage Cell will also function as a protective membrane for waterproofing on concrete slabs, walls and provide ventilation for concrete slabs, alleviating heat induced stress and cracking.



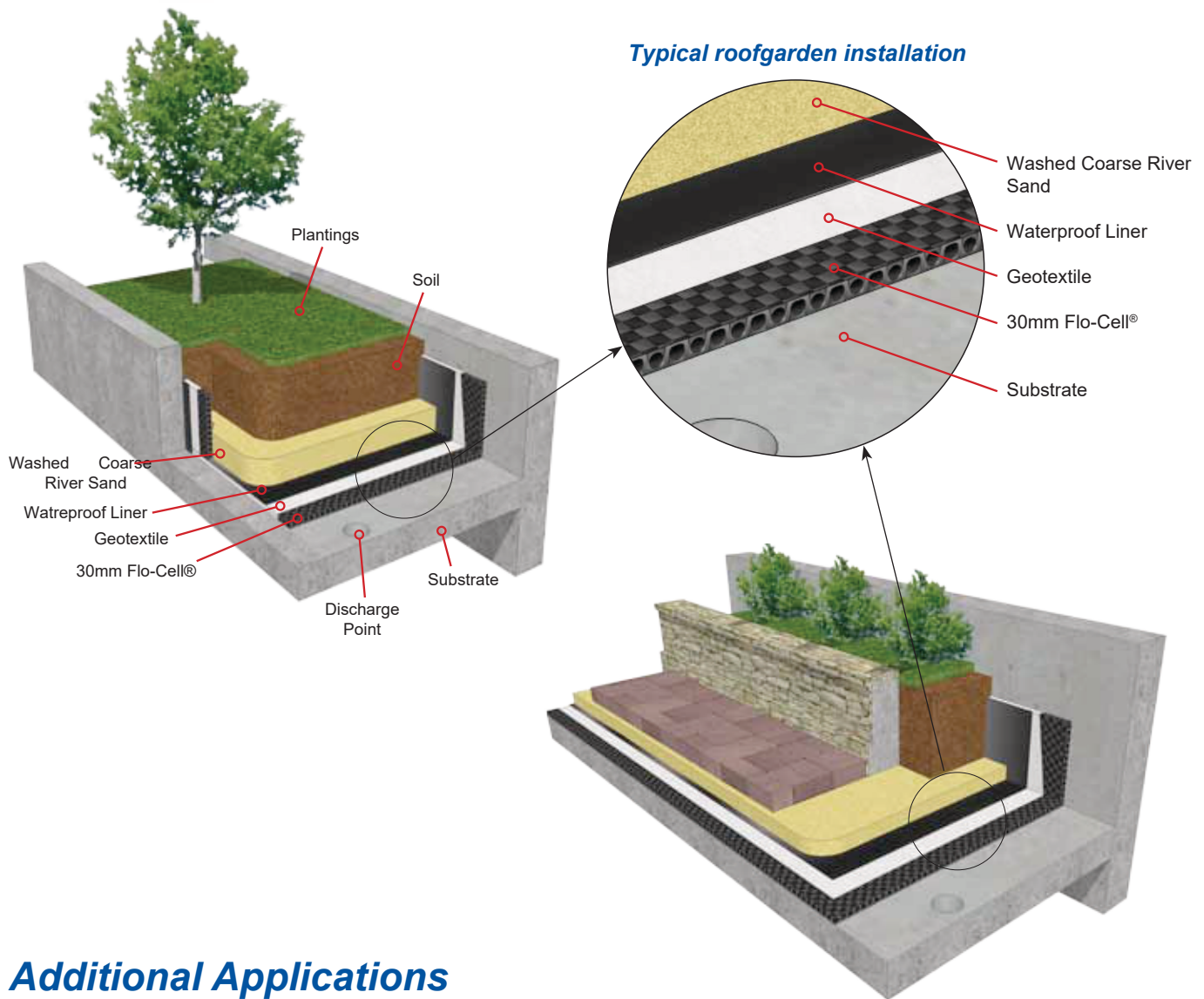
Installation in Nesselande, Holland



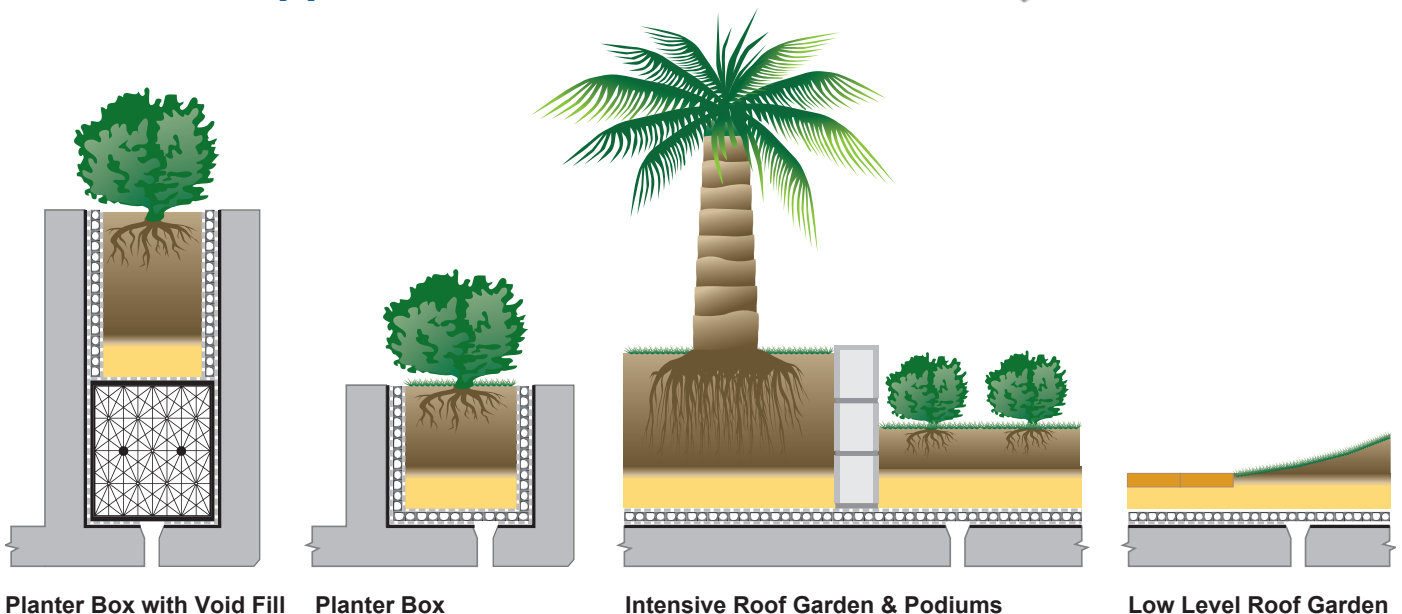
Installation in Rotterdam, Holland

Note: Roof garden soil depth can vary depending on the specific design purpose. The concrete slab must have sufficient load bearing strength to support the soil depth required. Factors such as permeable soil, vegetation, species selection, size and root system behaviour must be considered.

Green Roof and Planter Box Applications

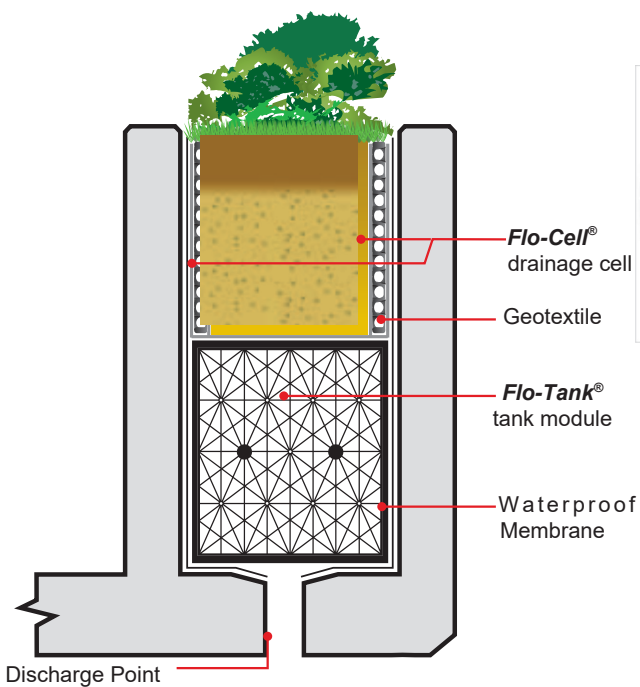
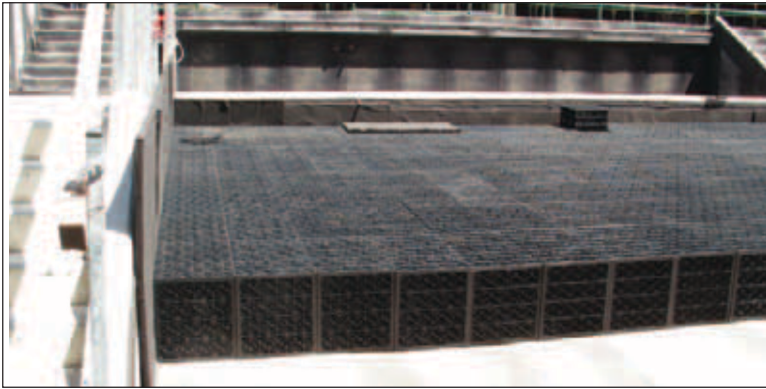
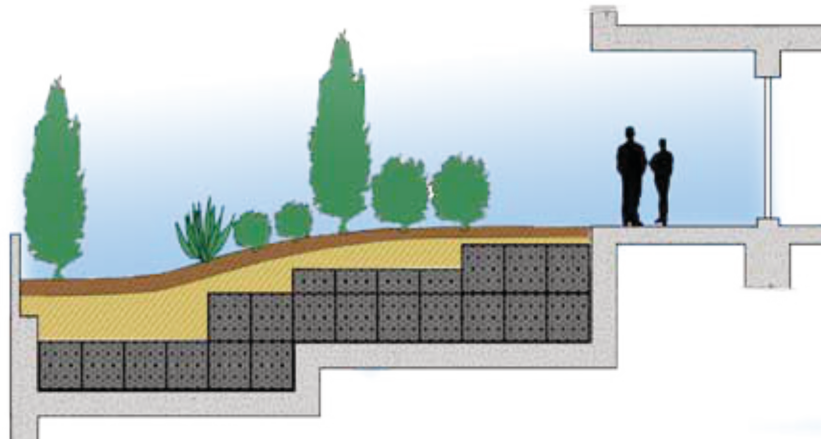


Additional Applications



Note: Roof garden soil depth can vary depending on the specific design purpose. The concrete slab must have sufficient load bearing strength to support the soil depth required. Factors such as permeable soil, vegetation, species selection, size and root system behaviour must be considered.

Void Space Fill / Drainage



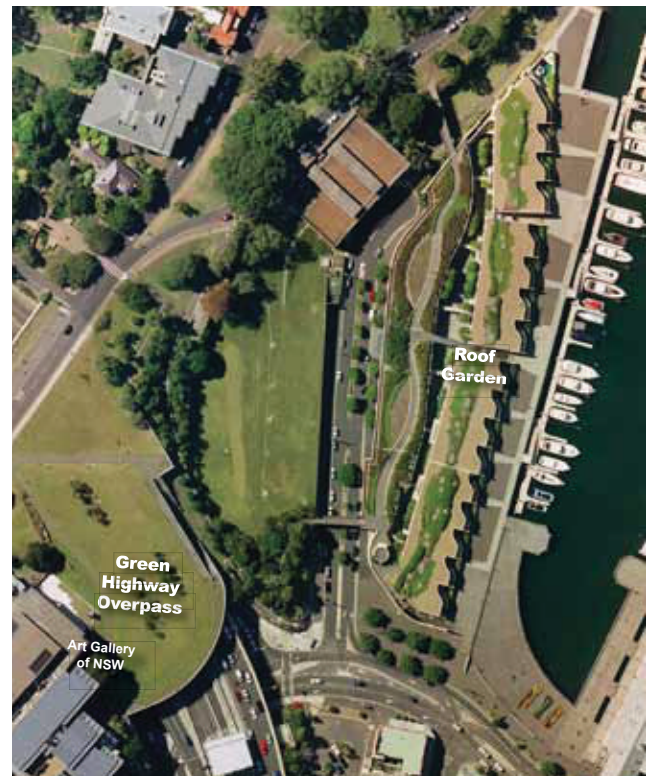
Uses Less SOIL!
Makes Lighter installations



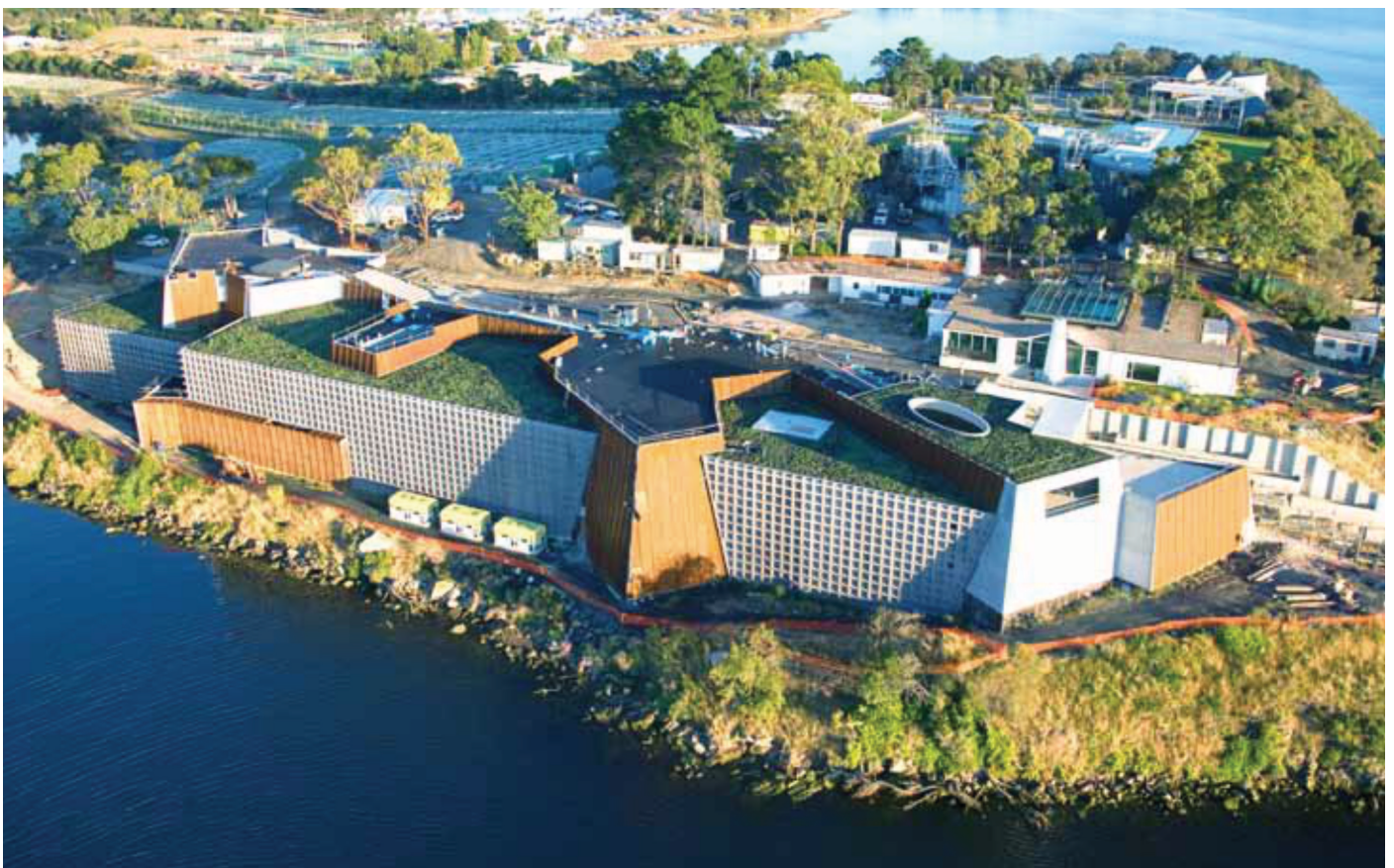
Atlantis Roof Garden Installations



Installation in Hong Kong Wetland Park



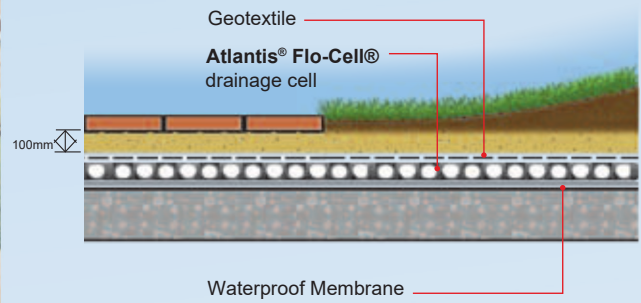
Green Roof Installations, Sydney CBD



Installation in Tasmania, Australia

ATLANTIS GREEN ROOF SOLUTIONS

■ LOW LEVEL ROOF GARDEN APPLICATION



■ PLANTER BOX DRAINAGE

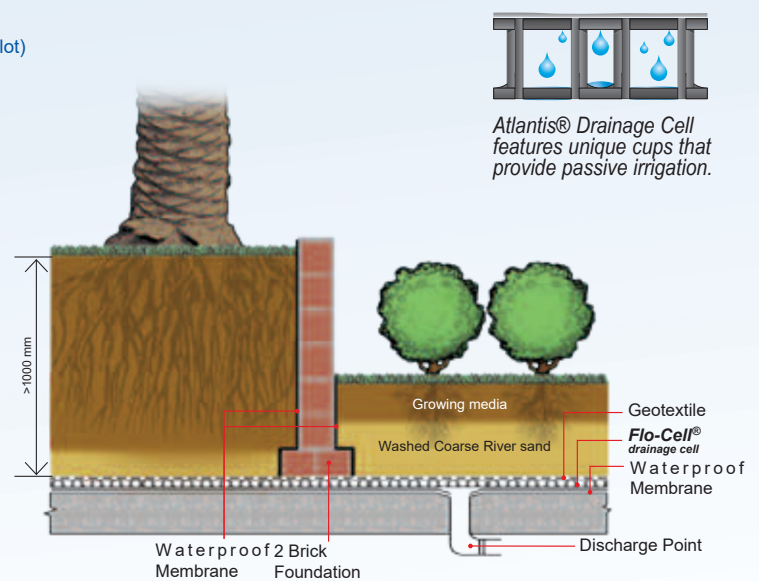


■ PODIUM DRAINAGE (Garden over underground parking lot)



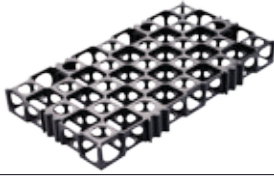
BEFORE

AFTER



Gravel Cell® Gravel Reinforcement Structure

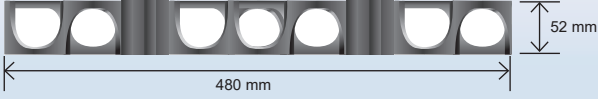
Part Number: 80052



H: 52mm (2.05") • W: 260mm (10.24") • L: 480mm (18.9")

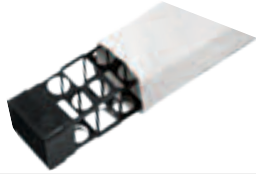
Color: Black

-- Supplied in 1m² panels



Flo-Pipe® Permeable Pipe

Part Number: 30014



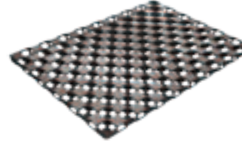
H: 80mm (3.14") • W: 100mm (3.97") • L: 1080mm (42.52")

Color: Black wrapped in geotextile

-- Supplied in wrapped in geotextile

Flo-Cell® 20mm Drainage Cell

Part Number:
80020

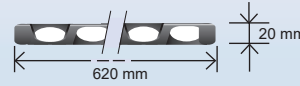


Height: 20mm (0.78")

Width: 405mm (15.94")

Length: 620mm (24.4")

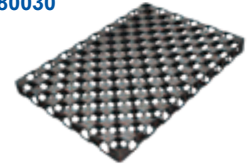
Color: Black



-- Supplied in 1.5m² panels

Flo-Cell® 30mm Drainage Cell

Part Number:
80030

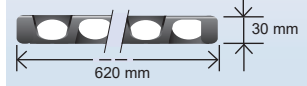


Height: 30mm (1.18")

Width: 405mm (15.94")

Length: 620mm (24.4")

Color: Black



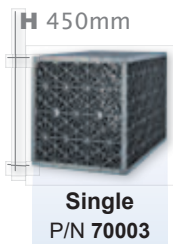
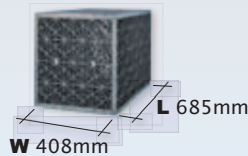
-- Supplied in 1.5m² panels

Flo-Log™ Premium Drainage Logs

Code	Product Name	Size
10519	52mm Flo-Log™ (1.9m)	(H)52 x (W)260 x (L)1920
10520	104mm Flo-Log™ (1.9m)	(H)104 x (W)260 x (L)1920
10521	156mm Flo-Log™ (1.9m)	(H)156 x (W)260 x (L)1920
10522	208mm Flo-Log™ (1.9m)	(H)208 x (W)260 x (L)1920
10523	260mm Flo-Log™ (1.9m)	(H)260 x (W)260 x (L)1920
20418	20mm Flo-Cell®	(H)20 x (W)400 x (L)1800
10418	30mm Flo-Cell®	(H)30 x (W)400 x (L)1800

Our products can be connected together to form any length required.

NOTE: All Flo-Tank® modules are 408mm in width and 685mm in length.



www.ecosustainablehouse.com.au PH: 07 5677 0838
Fax: 07 5636 0263

sales@ecosustainablehouse.com.au

Solutions for a Greener Tomorrow