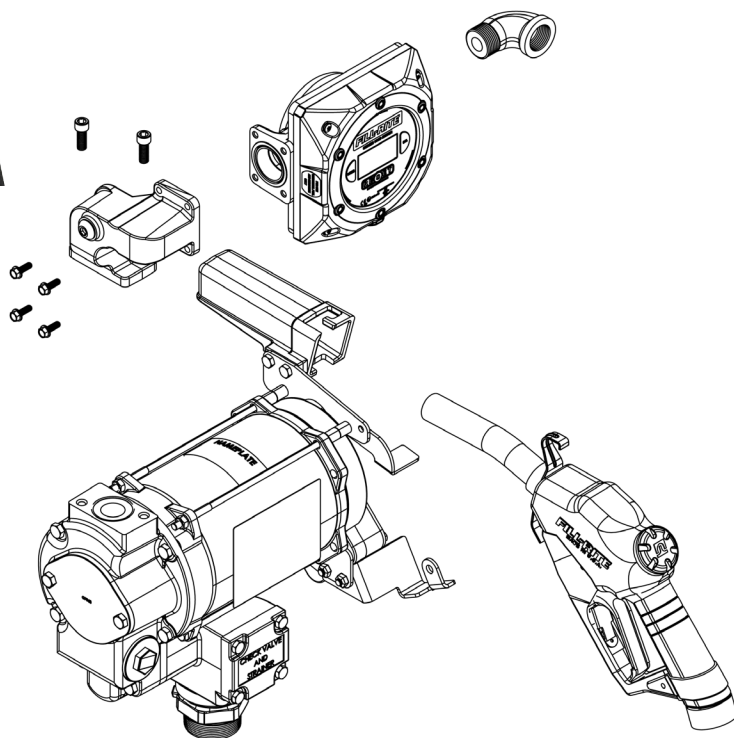
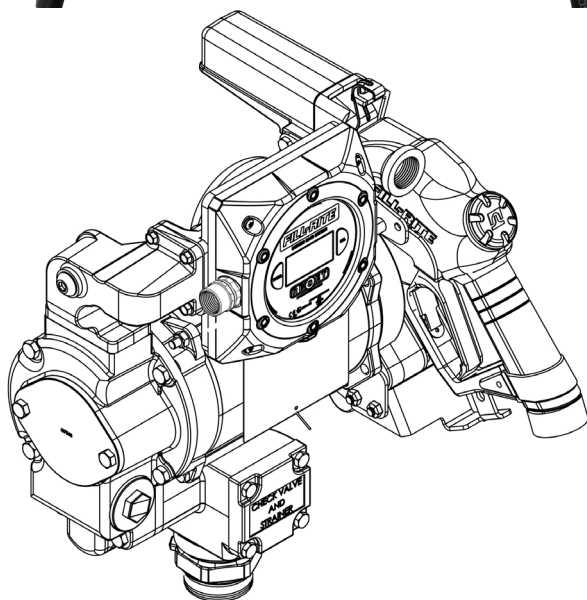


# FILL-RITE®

The Most Trusted Name in Pumps and Meters

## FR319VB Technical Specifications



Pump	
Type - Rotary, Diaphragm, Gear, Vane	Vane
GPM in Supplied Configuration	26.6
GPM Open Flow - no Hose or Nozzle	33.4
By-Pass Pressure Rating (PSI) - Max	21 PSI
Dry Vac (in Hg)	12
Head - Max (Ft.)	N/A
Anti-Siphon Valve	Optional
Inlet - Size / Thread	1.25" NPT
Outlet - Size / Thread	1" NPT
Mount	Bung
Material - Pump Housing	Cast Iron
Material - Wetted Material	Fluorocarbon / Buna
Rotor Material	Bronze
Rotor Vane Material	Carbon
Compatible Fluids	Diesel, Gasoline, BioDiesel up to B20, E15, Kerosene
Max Viscosity of Fluids to Pump	22cSt
Strainer Mesh Size	.04"
Warranty	2 Years

Motor	
Power - AC 115,230, 115/230 VAC	115/230
HZ 50,60,50/60	50/60
Power - DC 12, 24, 12/24	N/A
HP (Horsepower) Rating	3/4 HP
Power Cord Length (feet)	N/A
Power Cord Gauge (AWG)	N/A
DC Power Cord Connectors	N/A
Amps (FLA)	9.8/4.9 11.4/5.7
RPM	1725/1425
Duty Cycle	30 min.
Thermal Protection Switch	Yes
Circuit Protection Fuse	None
Certification	UL, cUL



Excellence at work. Excellence in life.

## SERVICE KIT INFORMATION

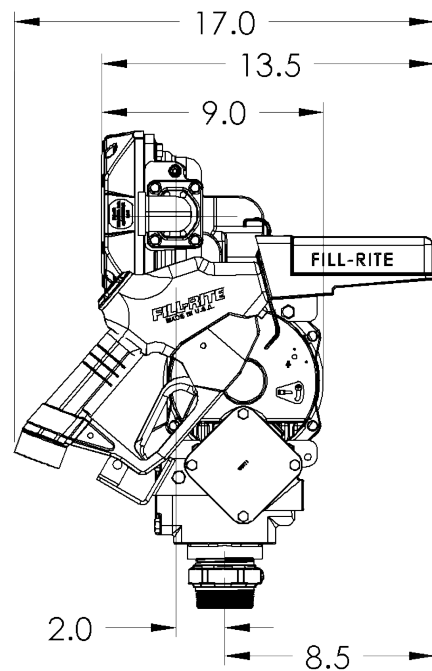
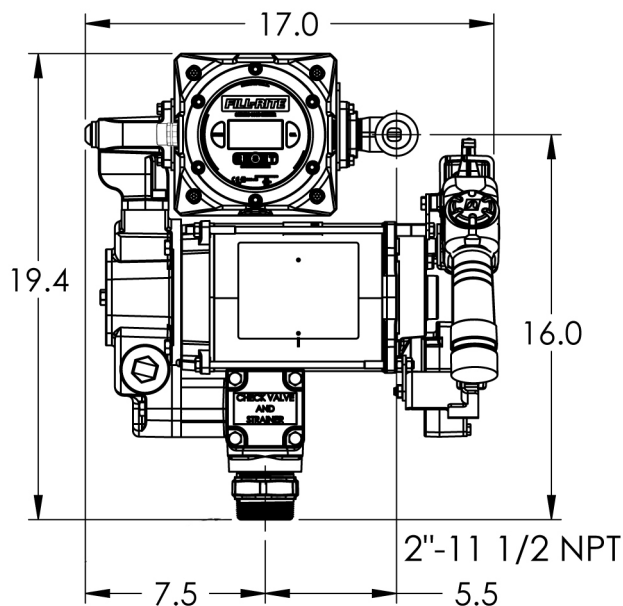
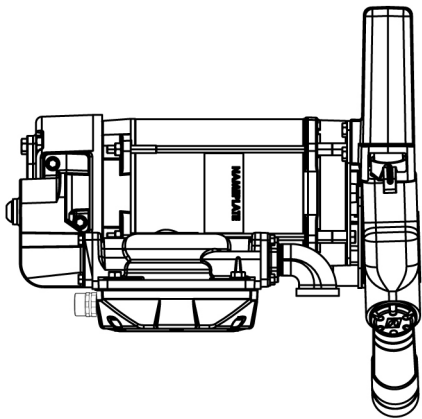
Kit	Description	Parts
KIT300SW	Switch Lever Kit	Switch lever, attaching hardware
KIT300JC	Junction Cover Kit	Junction box cover, O-ring seal, attaching hardware
KIT300BV	Bypass Kit	Bypass cap, O-ring seals, bypass body and poppet, spring, attaching hardware
KIT700SL	O-Ring Kit	O-ring seals, retaining ring, nickel plated seals, stainless steel seals and spring
KIT300RG	Rotor Kit	Rotor, vanes, O-ring seals attaching hardware
KIT700BG	Inlet Kit	Inlet adapter, AST 2 x 1 1/4
KIT300SG	Pressure Relief Kit	Pressure relief valve, O-ring seals, gasket, check valve body, stem, and insert
KIT120NB	Nozzle Boot Kit	Nozzle boot, attaching hardware
KIT300BD	Gasket Kit	Gaskets, O-ring seals, bypass cap, flange cover
KIT300NR	Nozzle Retainer Kit	Nozzle retainer and attaching hardware
KIT3000T	Outlet Kit	Outlet flange, O-ring seal, attaching hardware
KIT700AS	Anti-Siphon Kit	Anti-siphon valve, Teflon tape, elbow adapter, stainless steel braided hose, attaching hardware

## Accessories

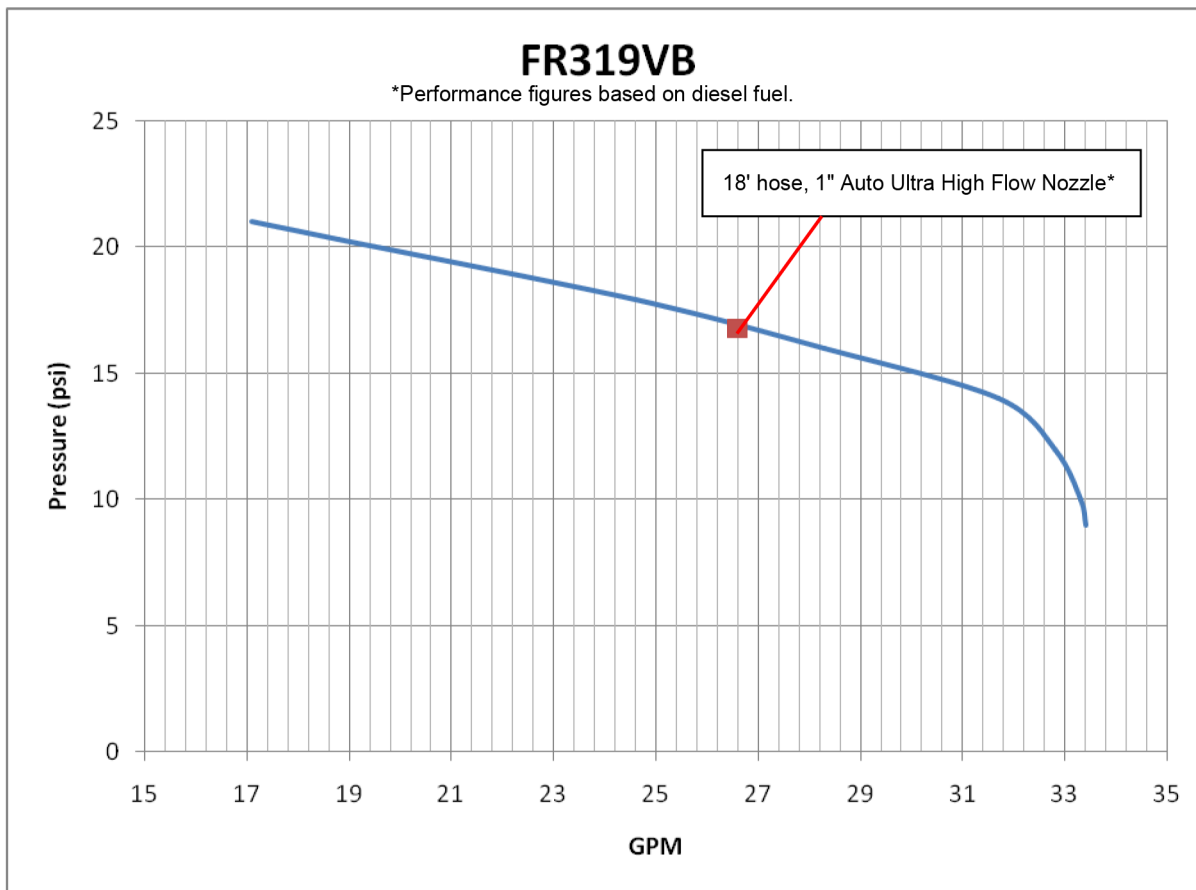
Suction Pipe Material	N/A
Suction Pipe Length	N/A
Nozzle - Size	1" Ultra High Flow
Nozzle - Manual / Automatic	Ultra High Flow
Hose Diameter	1"
Hose Length	18'
Hose Material of Construction	Black Nitrile Rubber
Hose Static Wire (Yes/No)	Yes
Hose Liquid Materials Compatibility	Diesel Fuel, Kerosene Heptane, Hexane, Mineral Spirits
Certifications	UL, cUL

## Measurements

Overall Height	19.4"
Overall Width	17"
Overall Depth	17"
Intake Center Line to Discharge Center Line	2"
Intake Center Line to Back of Nozzle Boot	8.5"
Shipping Weight	94 lbs.
Qty per Pallet	8
Box Dimensions:	
Length	21"
Width	20"
Height	18"



PSI	GPM	Amp	Notes
9	33.4	9.01	
10	33.3	9.1	
12	32.8	9.22	
14	31.7	9.37	
16	28.3	9.47	
18	24.6	9.48	
20	18.8	9.46	
21	17.1	9.57	
21	0	9.13	Bypass
16	27.7	9.48	18' X 1" Manual Nozzle
16.5	26.6	9.47	18' X 1" Ultra High Flow Nozzle
17	27.5	9.5	20' X 1" Manual Nozzle
17.5	26.3	9.51	20' X 1" Ultra High Flow Nozzle



*Changes in temperatures, fluid viscosity, and system accessories may shift the performance curves.*

Performance figures based on diesel fuel.