

A FULL LINEUP OF HIGH DEFINITION VIDEO OBSERVATION SYSTEMS & MORE!

Cab **CAM**™



www.theCabCAM.com

Available at your local A&I Products Reseller

A-HDS1151 7" CabCAM™ Standard Definition Camera System

The original system, upgraded!

REPLACES A-CC7M1C

(1) Standard Definition Weatherproof Color Camera

- Infrared Illuminators allow up to 32 feet of night visibility
- Image mirroring capability
- Designed to handle off-road conditions
- Audio capability

7" HD Monitor

- 3 Camera capability
- Audio speaker
- Remote control
- 13 Pin wire harness



? The Original

A-CC7M1C first came to the market in 2007. It was designed as an affordable camera observation system for use with Ag equipment. It soon was realized that the applications for CabCAM™ are endless.



Accessories

- Ball Swivel Mounting Bracket with Mounting Pad
- Stationary Mounting Bracket with Thumb Screws
- Sunshield
- Automotive Power Adapter
- Hard Wire Power Adapter
- 20' Weatherproof Video Cable
- 65' Weatherproof Video Cable

Because the camera with this kit is standard definition, the image displayed will be standard definition. Upgrade to a full HD experience by using HD cameras. See page 11-12 for HD camera options.

A-HDS1304 7" Touch Button CabCAM™ HD Camera System

Easy to use, easy to clean!

(1) HD Weatherproof Color Camera

- Infrared Illuminators allow up to 32 feet of night visibility
- Image mirroring capability
- Designed to handle off-road conditions
- Audio capability

7" HD Touch Button Monitor

- 4 Camera capability
- Audio speaker
- Remote control
- 22 Pin wire harness



Accessories

- Ball Swivel Mounting Bracket with Mounting Pad
- Stationary Mounting Bracket with Thumb Screws
- Sunshield
- Automotive Power Adapter
- Hard Wire Power Adapter
- 20' Weatherproof Video Cable
- 65' Weatherproof Video Cable

A-HDS1406 7" Weatherproof Touch Button CabCAMTM HD Camera System

Great for open station equipment!

(1) HD Weatherproof Color Camera

- Infrared Illuminators allow up to 32 feet of night visibility
- Image mirroring capability
- Designed to handle off-road conditions
- Audio capability

7" HD Weatherproof Touch Button Monitor

- Sealed construction, made to withstand the elements.
- 4 Camera capability
- Audio speaker
- Remote control
- 22 Pin wire harness



Accessories

- Ball Swivel Mounting Bracket with Mounting Pad
- Stationary Mounting Bracket with Thumb Screws
- Sunshield
- Automotive Power Adapter
- Hard Wire Power Adapter
- 20' Weatherproof Video Cable
- 65' Weatherproof Video Cable

Although this monitor is weatherproof, in cases where the system is not being used & is out in the elements for an extended period of time, the monitor should be removed & stored in a safe place.

A-HD7M1C 7" CabCAMTM HD Touch Screen Camera System

A modern approach to HD systems!

(1) HD Weatherproof Color Camera

- Infrared Illuminators allow up to 32 feet of night visibility
- Image mirroring capability
- Designed to handle off-road conditions
- Audio capability

7" HD Touch Screen Monitor

- 4 Camera capability
- Audio speaker
- Remote control
- 22 Pin wire harness



Accessories

- Ball Swivel Mounting Bracket with Mounting Pad
- Stationary Mounting Bracket with Thumb Screws
- Sunshield
- Hard Wire Power Adapter
- 20' Weatherproof Video Cable
- 65' Weatherproof Video Cable

A-HDS1559 7" Weatherproof Quad CabCAM™ HD Touch Screen Camera System

Keep everything within a glance in all conditions!

(2) HD Weatherproof Color Cameras

- Infrared Illuminators allow up to 32 feet of night visibility
- Image mirroring capability
- Designed to handle off-road conditions
- Audio capability

7" HD Weatherproof Touch Screen/Button Quad Monitor

- Sealed construction, made to withstand the elements
- Quad Display
- 4 Camera capability
- Audio speaker
- Remote control
- 27 Pin wire harness



Accessories

- Ball Swivel Mounting Bracket with Mounting Pad
- Stationary Mounting Bracket with Thumb Screws
- Sunshield
- Automotive Power Adapter
- Hard Wire Power Adapter
- (2) 20' Weatherproof Video Cables



Although this monitor is weatherproof, in cases where the system is not being used & is out in the elements for an extended period of time, the monitor should be removed & stored in a safe place.

? Illuminators

Infrared illuminators can see in the dark and provide visibility when otherwise impossible without added lighting. For applications where standard illumination is best, see page 5 for info on white light LED cameras and systems.



A-HD7M2CQ 7" Quad CabCAM™ HD Touch Screen Camera System

Four times the HD views!

(2) HD Weatherproof Color Cameras

- Infrared Illuminators allow up to 32 feet of night visibility
- Image mirroring capability
- Designed to handle off-road conditions
- Audio capability

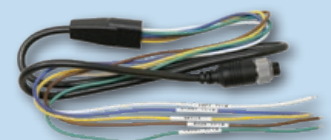
7" HD Touch Screen Monitor

- Quad Display
- 4 Camera capability
- Audio speaker
- Remote control
- 27 Pin wire harness



? Trigger Wire Harness

A trigger wire harness automatically changes your camera view by wiring to a power signal that exists in your machine. Compatible with HD Quad monitors.



Accessories

- Ball Swivel Mounting Bracket with Mounting Pad
- Stationary Mounting Bracket with Thumb Screws
- Sunshield
- Hard Wire Power Adapter
- (2) 20' Weatherproof Video Cables
- Camera Trigger Wire Harness



White LED CabCAM Systems Solutions for Air Seeder Applications & More

White LED Illuminators work more effectively in air seeder tanks than infrared due to dust and debris and reflection. We have solutions that make it easy to see in your tank or for any other application where lighted illumination is preferred over infrared!

A-HDS1751 **7" Standard Definition Single View Kit**

- The same kit as A-HDS1151 but w/ a white LED camera
- See page 2 for kit info



A-HDS1751

A-HDS1852 **7" HD Quad View Kit**

- The same kit as A-HDS1559 but w/ white LED cameras
- See page 4 for kit info



A-HDS1852

A-HDS1953 **9" HD Quad View Kit**

- The same kit as A-HDS1650 but w/ white LED cameras
- See page 6 for kit info



A-HDS1953

A-CWP340 CabCAM™ Wall Plug See page 15



A-CWP340

A-TCK44 Implement Cable Kit See page 15



A-TCK44



A-HDS1508 9" Touch Button CabCAM™ HD Camera System

A perfect mid-size solution to HD!

(1) HD Weatherproof Color Camera

- Infrared Illuminators allow up to 32 feet of night visibility
- Image mirroring capability
- Designed to handle off-road conditions
- Audio capability

9" HD Touch Button Monitor

- 4 Camera capability
- Audio speaker
- Remote control
- 22 Pin wire harness



Accessories

- Ball Swivel Mounting Bracket with Mounting Pad
- Stationary Mounting Bracket with Thumb Screws
- Sunshield
- Automotive Power Adapter
- Hard Wire Power Adapter
- 20' Weatherproof Video Cable
- 65' Weatherproof Video Cable

A-HDS1650 9" Quad CabCAM™ HD Camera System

Maximize your visibility and safety!

(2) HD Weatherproof Color Cameras

- Infrared Illuminators allow up to 32 feet of night visibility
- Image mirroring capability
- Designed to handle off-road conditions
- Audio capability

9" HD Touch Screen/Button Quad Monitor

- Quad Display
- 4 Camera capability
- Audio speaker
- Remote control
- 27 Pin wire harness



Accessories

- Ball Swivel Mounting Bracket with Mounting Pad
- Stationary Mounting Bracket with Thumb Screws
- Sunshield
- Automotive Power Adapter
- Hard Wire Power Adapter
- (2) 20' Weatherproof Video Cables



Quad Display

The Quad CabCAM™ displays offer multiple viewing options. You can choose from full screen single cam and six different split screen configurations



A-HD10M1C 10" CabCAM™ HD Touch Screen Camera System

A better view with a bigger screen!

(1) HD Weatherproof Color Camera

- Infrared Illuminators allow up to 32 feet of night visibility
- Image mirroring capability
- Designed to handle off-road conditions
- Audio capability

10" HD Touch Screen Monitor

- 4 Camera capability
- Audio speaker
- Remote control
- 22 Pin wire harness



? 150° Camera

The 150° License Plate Camera offers a wider view over the standard 110° CabCAM™ Camera. For more information, review all the cameras available on pages 11-13.



Accessories

- Ball Swivel Mounting Bracket with Mounting Pad
- Stationary Mounting Bracket with Thumb Screws
- Sunshield
- Hard Wire Power Adapter
- 65' Weatherproof Video Cable
- 20' Weatherproof Video Cable

A-HD10M2CQ 10" Quad CabCAM™ HD Touch Screen Camera System

The largest and clearest views for you!

(2) HD Weatherproof Color Cameras

- Infrared Illuminators allow up to 32 feet of night visibility
- Image mirroring capability
- Designed to handle off-road conditions
- Audio capability

10" HD Touch Screen Monitor

- Quad Display
- 4 Camera capability
- Audio speaker
- Remote control
- 27 Pin wire harness



Accessories

- Ball Swivel Mounting Bracket with Mounting Pad
- Stationary Mounting Bracket with Thumb Screws
- Sunshield
- Hard Wire Power Adapter
- (2) 20' Weatherproof Video Cables
- Camera Trigger Wire Harness



A-HDM1141 7" HD Color Monitor

- For use with wired CabCAM™ systems, High Definition Color LCD screen
- Embedded control box for direct power input for cameras
- Three camera capability
- Audio Speaker, Remote Control, 13-Pin Wire Harness
- Power indicator, remote receiving window, POWER, MENU, Brightness, Channel, & SELECT buttons
- Ball Swivel & Stationary Mounting Brackets, Sunshield, Hard-wire Power Adapter, Auto Power Adapter
- 12V-24V
- Replaces A-VS7M13PIN



A-HDM1242 7" HD Touch Button Color Monitor

- For use with wired CabCAM™ systems, High Definition Color LCD screen
- Embedded control box for direct power input for cameras
- Four camera capability
- Audio Speaker, Remote Control, 22-Pin Wire Harness
- Power indicator, remote receiving window, POWER, MENU, Brightness, Channel, & SELECT buttons
- Ball Swivel & Stationary Mounting Brackets, Sunshield, Hard-wire Power Adapter, Auto Power Adapter
- 12V-24V
- Replaces A-TM7121



A-HDM1343 7" HD Weatherproof Touch Button Color Monitor

- For use with wired CabCAM™ systems, High Definition Color LCD screen
- Perfect for open station applications
- Embedded control box for direct power input for cameras
- Four camera capability
- Audio Speaker, Remote Control, 22-Pin Wire Harness
- Power indicator, remote receiving window, POWER, MENU, Brightness, Channel, & SELECT buttons
- Ball Swivel & Stationary Mounting Brackets, Sunshield, Hard-wire Power Adapter, Auto Power Adapter
- 12V-24V
- Replaces A-WTM125

Although this monitor is weatherproof, in cases where the system is not being used & is out in the elements for an extended period of time, the monitor should be removed & stored in a safe place.



A-HD7M 7" HD Touch Screen Color Monitor

- For use with wired CabCAM™ systems, High Definition Color LCD screen
- Embedded control box for direct power input for cameras
- Four camera capability
- Audio Speaker, Remote Control, 22-Pin Wire Harness
- Power indicator, remote receiving window, POWER, MENU, Brightness, Channel, & SELECT on-screen
- Ball Swivel & Stationary Mounting Brackets, Sunshield, Hard-wire Power Adapter
- 12V-24V



A-HDM1444 **9" HD Touch Button Color Monitor**

- For use with wired CabCAM™ systems, High Definition Color LCD screen
- Embedded control box for direct power input for cameras
- Four camera capability
- Audio Speaker, Remote Control, 22-Pin Wire Harness
- Power indicator, remote receiving window, POWER, MENU, Brightness, Channel, & SELECT buttons
- Ball Swivel & Stationary Mounting Brackets, Sunshield, Hard-wire Power Adapter, Auto Power Adapter
- 12V-24V
- Replaces A-TM9138



A-HD10M **10" HD Touch Screen Color Monitor**

- For use with wired CabCAM™ systems, High Definition Color LCD screen
- Embedded control box for direct power input for cameras
- Four camera capability
- Audio Speaker, Remote Control, 22-Pin Wire Harness
- Power indicator, remote receiving window, POWER, MENU, Brightness, Channel, & SELECT on-screen
- Ball Swivel & Stationary Mounting Brackets, Sunshield, Hard-wire Power Adapter
- 12V-24V



CabCAM™ Wired Camera System Cross Reference Guide

Nearly all systems have been upgraded to HD or HD-compatible solutions. Here is a reference guide explaining the new system that may have replaced your favorite part number for any application.

Old Number	New Number	HD Monitor	HD Camera(s)	Quad
A-CC7M1C	A-HDS1151	YES, 7"	NO (1)	NO
A-CTB7M1C	A-HDS1304	YES, 7"	YES (1)	NO
A-CWT7M1C	A-HDS1406	YES, 7"	YES (1)	NO
A-HD7M1C	NO CHANGE	YES, 7"	YES (1)	NO
A-CC7M2CQR	A-HDS1559	YES, 7"	YES (2)	YES
A-HD7M2CQ	NO CHANGE	YES, 7"	YES (2)	YES
A-CWL7M1C	A-HDS1751	YES, 7"	NO (1)	NO
A-CWL7M2CQ	A-HDS1852	YES, 7"	YES (2)	YES
A-CWL9M2CQ	A-HDS1953	YES, 9"	YES (2)	YES
A-CTB9M1C	A-HDS1508	YES, 9"	YES (1)	NO
A-CCT9M2CQ	A-HDS1650	YES, 9"	YES (2)	YES
A-HD10M1C	NO CHANGE	YES, 10"	YES (1)	NO
A-HD10M2CQ	NO CHANGE	YES, 10"	YES (2)	YES

A-HDM1545 7" HD Weatherproof Touch Screen/Touch Button Color Quad Monitor

- For use with wired CabCAM™ systems, High Definition Color LCD screen
- Embedded control box for direct power input for cameras
- Four camera capability, Split Screen & Picture-in-picture capability
- Audio Speaker, Remote Control, 27-Pin Wire Harness
- Ball Swivel & Stationary Mounting Brackets, Sunshield, Hard-wire Power Adapter, Auto Power Adapter
- Brightness, contrast, color, hue, mirror & upside down functions can be set for each individual camera
- Camera default names are "LEFT," "RIGHT," "FRONT," and "BACK." This function can be turned off or cameras can be renamed up to eight characters long
- Power indicator, remote receiving window, POWER, MENU, Brightness, Channel, & SELECT buttons
- 12V-24V
- Replaces A-QM7127R



Although this monitor is weatherproof, in cases where the system is not being used & is out in the elements for an extended period of time, the monitor should be removed & stored in a safe place.

A-HD7QM 7" HD Touch Screen Color Quad Monitor

- For use with wired CabCAM™ systems, High Definition Color LCD screen
- Embedded control box for direct power input for cameras
- Four camera capability, Split Screen & Picture-in-picture capability
- Audio Speaker, Remote Control, 27-Pin Wire Harness
- Ball Swivel & Stationary Mounting Brackets, Sunshield, Hard-wire Power Adapter
- Brightness, contrast, color, hue, mirror & upside down functions can be set for each individual camera
- Camera default names are "LEFT," "RIGHT," "FRONT," and "BACK." This function can be turned off or cameras can be renamed up to eight characters long
- Power indicator, remote receiving window, POWER, MENU, Brightness, Channel, & SELECT on-screen
- 12V-24V



A-HDM1646 9" HD Touch Screen/Touch Button Color Quad Monitor

- For use with wired CabCAM™ systems, High Definition Color LCD screen
- Embedded control box for direct power input for cameras
- Four camera capability, Split Screen & Picture-in-picture capability
- Audio Speaker, Remote Control, 27-Pin Wire Harness
- Ball Swivel & Stationary Mounting Brackets, Sunshield, Hard-wire Power Adapter
- Brightness, contrast, color, hue, mirror & upside down functions can be set for each individual camera
- Camera default names are "LEFT," "RIGHT," "FRONT," and "BACK." This function can be turned off or cameras can be renamed up to eight characters long
- Power indicator, remote receiving window, POWER, MENU, Brightness, Channel, & SELECT on-screen
- 12V-24V
- Replaces A-QM9146



A-HD10QM 10" HD Touch Screen Color Quad Monitor

- For use with wired CabCAM™ systems, High Definition Color LCD screen
- Embedded control box for direct power input for cameras
- Four camera capability, Split Screen & Picture-in-picture capability
- Audio Speaker, Remote Control, 27-Pin Wire Harness
- Ball Swivel & Stationary Mounting Brackets, Sunshield, Hard-wire Power Adapter
- Brightness, contrast, color, hue, mirror & upside down functions can be set for each individual camera
- Camera default names are "LEFT," "RIGHT," "FRONT," and "BACK." This function can be turned off or cameras can be renamed up to eight characters long
- Power indicator, remote receiving window, POWER, MENU, Brightness, Channel, & SELECT on-screen
- 12V-24V



All HD monitors require HD cameras to display in HD resolution. Non-HD cameras are compatible, but will display in standard definition.

A-VS1C110 **SD 110° Color Camera**

- For use with wired CabCAM™ systems & NTSC format GPS monitors
- Infrared illuminators allow up to 32' of night visibility
- Weatherproof and constructed to withstand off-road conditions
- Audio capabilities



A-HD1080C **HD 110° Color Camera**

- For use with wired HD CabCAM™ systems ONLY
- Not compatible with non-HD CabCAM™ systems or GPS monitors
- Infrared illuminators allow up to 32' of night visibility
- Weatherproof and constructed to withstand off-road conditions
- Audio capabilities



A-PAL110C **SD PAL Format 110° Color Camera**

- For use with PAL format GPS monitors only
- Infrared illuminators allow up to 32' of night visibility
- Weatherproof and constructed to withstand off-road conditions
- Audio capabilities



A-VS1CWL **SD 110° White LED Color Camera**

- For use with wired CabCAM™ systems & NTSC format GPS monitors
- White LED illuminators for better visibility and color quality up to 32'
- Weatherproof and constructed to withstand off-road conditions
- Audio capabilities
- Use in air-seeder tanks and other dark areas



A-HDC3208 **HD 110° White LED Color Camera**

- For use with wired HD CabCAM™ systems ONLY
- White LED illuminators for better visibility and color quality up to 32'
- Weatherproof and constructed to withstand off-road conditions
- Audio capabilities
- Use in air-seeder tanks and other dark areas



A-MC110S **SD 110° Color Camera**

- For use with John Deere Combines, Tractors, Sprayers, Forage Harvesters, etc., 5-pin connector
- Direct plug & play with OEM harness, Includes bolt pattern for OEM mount w/hardware
- Infrared illuminators allow up to 32' of night visibility
- Weatherproof and constructed to withstand off-road conditions
- Audio capabilities



A-CAM87 **SD 110° Compact Color Camera**

- For use with wired CabCAM™ systems & NTSC format GPS monitors
- Physically smaller & requires less power than A-VS1C110
- Infrared illuminators allow up to 16' of night visibility
- Weatherproof and constructed to withstand off-road conditions
- Audio capabilities



A-HDC8702 **HD 110° Compact Color Camera**

- For use with wired HD CabCAM™ systems ONLY
- Physically smaller & requires less power than A-HD1080C
- Infrared illuminators allow up to 16' of night visibility
- Weatherproof and constructed to withstand off-road conditions
- Audio capabilities



CabCAM™

A-ASC635M SD 110° Auto Shutter Color Camera

- For use with wired CabCAM™ systems & NTSC format GPS monitors
- Steel Shutter is closed when not in use to keep lens free from debris
- Weatherproof and constructed to withstand off-road conditions
- Infrared illuminators allow up to 32' of night visibility
- Auto heating when temperature is below 50° F or 10° C
- Audio capabilities



A-HDC6351 HD 130° Auto Shutter Color Camera

- For use with wired HD CabCAM™ systems ONLY
- Stainless Steel Shutter is closed when not in use to keep lens free from debris
- Weatherproof and constructed to withstand off-road conditions
- Infrared illuminators allow up to 32' of night visibility
- Auto heating when temperature is below 50° F or 10° C
- Audio capabilities



A-LPC634 150° License Plate Camera

- For use with wired CabCAM™ systems & NTSC format GPS monitors
- Infrared illuminators allow up to 9' of night visibility
- Super wide angle (150°)
- Waterproof construction
- Easy to install
- Slotted mounting holes adjust from 6 5/8" - 7 1/4"
- No Audio



A-HDC5670 150° License Plate Camera

- For use with wired HD CabCAM™ systems ONLY
- Infrared illuminators allow up to 9' of night visibility
- Super wide angle (150°)
- Waterproof construction
- Easy to install
- Slotted mounting holes adjust from 6 5/8" - 7 1/4"
- No Audio



A-WL89CC Flood LED Work Lamp/ CabCAM™ Camera Combo

Add lighting and video capabilities to your equipment simultaneously. The addition of LED lights provides a more illuminated viewing area than infrared with more accurate color reproduction on screen.

- Features hollow mounting stud
- Includes two universal mounting brackets



3200 RAW LUMENS | 2500 EFFECTIVE LUMENS
SEE PAGE 13 FOR MORE INFO

A-SVC402 90° Color Camera

- For use with wired CabCAM™ systems & NTSC format GPS monitors
- Contoured housing designed for side mounting, unlimited mounting possibilities
- Infrared illuminators allow up to 16' of night visibility
- Weatherproof and constructed to withstand off-road conditions
- Easy external angle adjustment, no disassembly required
- No Audio



A-BC644 110° Ball Swivel Color Camera

- For use with wired CabCAM™ systems & NTSC format GPS monitors
- Weatherproof
- Convenient angle adjustment
- 5 LED infrared illuminators allow 16' of night visibility
- Unlimited mounting capabilities
- 2.25" wide x 1.80 tall x 2.00" deep
- No audio



A-SVC134 110° Compact Side Mount Color Camera

- For use with wired CabCAM™ systems & NTSC format GPS monitors
- Weatherproof
- Convenient angle adjustment
- 5 LED infrared illuminators allow 16' of night visibility
- 2.00" wide x 1.60 tall x 3.56 deep
- No audio



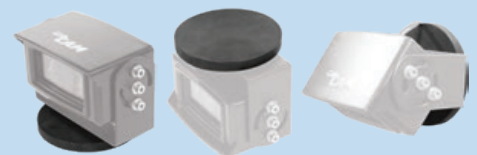
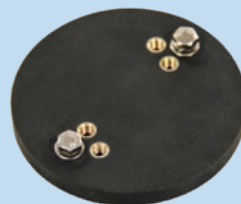
A-WL89CC Flood LED Work Lamp/CabCAM™ Camera Combo

- For use with wired CabCAM™ systems & NTSC format GPS monitors
- Weatherproof
- 3200 Raw Lumens, 2500 Effective Lumens
- Die cast aluminum housing, polycarbonate lens
- 4.75" wide x 4.75 tall x 3.5 deep
- Includes two universal mounting brackets
- No audio



A-MG539 Magnet Camera Mount

- For use with CabCAM™ cameras utilizing the standard U-bracket
- Mount a CabCAM™ camera to any magnetic surface
- Ultra strong
- Rubber coated to protect paint
- 3.22" diameter



A-BRK7M 7" Original Monitor Bracket Kit

- For use with A-HDM1141 monitors
- U-support bracket with threaded mounting knobs
- Ball swivel bracket with stick pad
- Flush mount bracket
- Sunshield



A-TB121BK 7" Touch Button Monitor Bracket Kit

- For use with A-HDM1242 monitor
- U-support bracket with threaded mounting knobs
- Ball swivel bracket with stick pad
- Sunshield



A-WM125BK 7" Weatherproof Touch Button Monitor Bracket Kit

- For use with A-HDM1343, A-HDM1545 monitors
- U-support bracket with threaded mounting knobs
- Ball swivel bracket with stick pad
- Sunshield



A-HD6164BK 7" Touch Screen Monitor Bracket Kit

- For use with A-HD7M & A-HD7QM monitors
- U-support bracket with threaded mounting knobs
- Ball swivel bracket with stick pad
- Sunshield



A-BRK9M 9" Monitor Bracket Kit

- For use with A-HDM1444, A-HDM1646 monitors
- U-support bracket with threaded mounting knobs
- Ball swivel bracket with stick pad
- Sunshield



A-HD9195BK 10" HD Monitor Bracket Kit

- For use with A-HD10M & A-HD10QM monitors
- U-support bracket with threaded mounting knobs
- Ball swivel bracket with stick pad
- Sunshield



A-BRK540 Monitor Bracket

- 360° horizontal rotation angle
- 90° side rotation angle
- Made of aluminum alloy
- Compatible with CabCAM™ LCD monitors with metal mount slot.
- Mounting hardware not included



A-DCW1 DC Adapter Wire

- For use with CabCAM™ systems
- 3' long
- (5) pack



A-AD35 3.5 Amp AC Adapter

- For use with wired Quad CabCAM™ systems



A-HNS13P 13 Pin Wire Harness

- For use with wired single view CabCAM™
- 13 pin harness (A-HDS1151)
- Jack for AC/automotive/DC adapter
- Fuse



A-HDH5419 22 Pin Wire Harness

- For use with wired single view CabCAM™
- 22 pin harness (A-HDS1304, A-HDS1406, A-HDS1508)
- DC adapter
- Fuse



A-HD22P 22 Pin Wire Harness

- For use with wired single view CabCAM™
- 22 pin harness (A-HD7M1C, A-HD10M1C)
- DC adapter
- Fuse
- Trigger wires



A-HDH1532 27 Pin Quad Wire Harness

- For use with wired Quad CabCAM™
- 27 pin harness
- DC adapter
- Fuse
- Trigger wires



A-HD346TW Trigger Wire

- For use with wired CabCAM™ systems
- For automatic camera changes



A-PVAKIT Power/Video Kit

- For use with CabCAM™ systems
- 2000 mA AC adapter
- Automotive power adapter
- AV conversion cable



A-HDRM Remote Control

- For use with CabCAM™ systems



A-RCACABLE RCA Cable

- For use with wired CabCAM™ systems
- 4 Pin Male/RCA Male/Power
- Jack for AC adapter/automotive power adapter to power camera
- Allows one camera to be hooked up to a TV/DVD/VCR or other recording device that has female RCA jacks



Power Video Cables

- For use with wired CabCAM™ systems
- Used to connect camera to monitor
- Weatherproof

A-PVC6 Power Video Cable, 6'

- 6' long



A-PVC10 Power Video Cable, 10'

- 10' long



A-PVC20 Power Video Cable, 20'

- 20' long



A-PVC30 Power Video Cable, 30'

- 30' long



A-PVC40 Power Video Cable, 40'

- 40' long



A-PVC50 Power Video Cable, 50'

- 50' long



A-PVC65 Power Video Cable, 65'

- 65' long



A-PVC200 Power Video Cable, 200'

- 200' long



A-PVC20S Power Video Cable, 20'

- 20' long

- 5-Pin for John Deere direct-fit applications



A-PVC65S Power Video Cable, 65'

- 65' long

- 5-Pin for John Deere direct-fit applications



A-CAP2 Power Video Cable Cap Plug

- For use with CabCAM™ camera cables
- Used to keep weather & dirt out of connection ends when not in use.
- Pair of (2) plugs; (1) male, (1) female



A-CWP340 CabCAM™ Wall Plug

- For use with wired CabCAM™ systems
- Ideal for plastic & metal air seeder tanks
- O-ring provides an airtight seal
- Requires drilling a 1" hole



A-CHR01 Interference Filter

- For use with wired CabCAM™ systems
- Ferrite Electromagnetic Interference Filter
- (2) pack



A-TCK523 Trailer Cable Kit

- For use with wired CabCAM™ systems
- 7 pin
- Aluminum connectors
- 2 camera capability
- 3.25' in original state, 14' when stretched
- Receptacles come with 2 short pigtails for monitor and camera hookup



A-CG523 Trailer Coiled Cable

- For use with wired CabCAM™ systems
- 7 pin
- Aluminum connectors
- 3.25' in original state, 14' when stretched
- Component of A-TCK523 Trailer Cable Kit



A-TR5237 Camera End Plug

- For use with wired CabCAM™ systems
- 7 pin
- Aluminum connectors
- 2 camera capability
- 16" long
- Component of A-TCK523 Trailer Cable Kit



A-TP7523 Monitor End Plug

- For use with wired CabCAM™ systems
- 7 pin
- Aluminum connectors
- 2 camera capability
- 16" long
- Component of A-TCK523 Trailer Cable Kit



A-TCK44 Implement Cable Kit

- For use with wired CabCAM™ systems
- Can be used on any application, designed for easy installation on air seeders.
- Four camera capability
- Includes: 32' tractor cable with up to 4-way connection to monitor, 32' intermediate extension cable, & short 4-way camera cable



A-C104M Monitor End, 4-Way Cable

- For use with wired CabCAM™ systems
- 4-way camera cable connects to monitor harness and outputs to 7 pin plug
- Weatherproof
- 32' long
- Component of A-TCK44 Implement Cable Kit



A-C4SPL Camera End, Short 4-Way

- For use with wired CabCAM™ systems
- 7 pin plug connects to 4-way camera cable for camera hook up
- Weatherproof
- 46" long
- Component of A-TCK44 Implement Cable Kit



A-C10CE Cable Extension, 32'

- For use with wired CabCAM™ systems
- Great for quick and easy hookup on implements
- 7 pin extension cable for A-C104M & C4SPL
- Weatherproof
- 32' long
- Component of A-TCK44 Implement Cable Kit



A-WL56M2C 7" Analog WiRELESS CabCAM™ Standard Definition Camera System

200 yard barrier-free transmission range!

THE ORIGINAL WIRELESS SYSTEM

(2) Weatherproof Analog Color Cameras

- (1) channel 3 camera, (1) channel 4 camera
- Infrared Illuminators allow up to 32 feet of night visibility
- Image mirroring capability
- Designed to handle off-road conditions
- Audio capability
- Cameras require 12V power source or 24V w/A-AD520 reducer

7" SD Analog Monitor

- 4 Camera capability
- Audio speaker
- 8 Pin wire harness
- 2.4GHz analog WiRELESS receiver



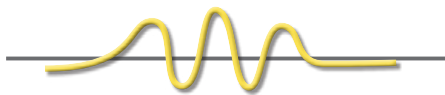
Accessories

- Ball Swivel Mounting Bracket with Mounting Pad
- Stationary Mounting Bracket with Thumb Screws
- A/V Input Cable
- Sunshield
- Automotive Power Adapter
- A/C Power Adapter
- (3) Hard Wire Adapters
- Remote Antenna w/9.75 ft Cord

Analog WiRELESS Camera Frequencies

- CHANNEL 1 - 2414 MHz**
- CHANNEL 2 - 2432 MHz**
- CHANNEL 3 - 2468 MHz**
- CHANNEL 4 - 2450 MHz**

What's the difference between Analog & Digital Transmission?



Analog WiRELESS is the transmission of audio & video signals using radio frequencies.

Facts of Analog WiRELESS:

- The signal from a camera can be picked up by multiple monitors.
- Antennas for the monitor & camera need "line of sight" in order to get a good signal.
- It is susceptible to interference.
 - Overhead power lines
 - Cell phones
 - Other wireless items with close frequencies.
- Analog WiRELESS items cannot be mixed with digital WiRELESS items.

Digital WiRELESS is the transmission of audio & video analog signals encoded as digital packets over high bandwidth radio frequencies. Digital WiRELESS features Frequency Hopping Spread Spectrum.

Facts of Digital WiRELESS:

- The signal is highly secure and resistant to jamming and interference.
- The signal is free from interference from external devices.
- The strength of the signal is much higher than analog.
- High-quality video & audio
- A device pairing process is required to synchronize the camera and the monitor.
- Cameras can only be paired to a single monitor.
- Signals from cameras will not interfere or overlap with one another.

The transmission between the antennas is what is considered WiRELESS. Cameras still need to be connected to a 12 volt power supply.

A-HDS2054 7" Digital WiRELESS Recording Quad CabCAMTM HD Camera System

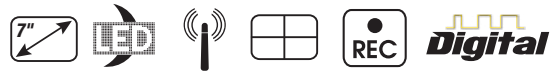
Quad monitor with wireless transmission!

(1) HD Weatherproof Digital Color Camera

- Infrared Illuminators allow up to 32 feet of night visibility
- 130 yard transmission range
- Image mirroring capability
- Designed to handle off-road conditions
- Audio capability
- Cameras require 12V-24V power source

7" HD Digital Quad Monitor

- 4 Camera capability
- 2.4GHz digital WiRELESS receiver
- Audio speaker
- Recording capability on 128GB Micro SD/TF card (not included)
- 27 Pin wire harness



Accessories

- Ball Swivel Mounting Bracket with Mounting Pad
- Stationary Mounting Bracket with Thumb Screws
- Sunshield
- Automotive Power Adapter
- Hard Wire Power Adapter



Not compatible with analog cameras. Must use A-HDC2673 or A-HDC1326 HDdigital cameras. See the WiRELESS camera page for more info. 4 cameras can be "paired" to this monitor. Cameras can only be "paired" to one monitor. For situations where one camera needs to be viewed on several monitors see our analog WiRELESS system.

A-HDS2105 10" Digital WiRELESS Recording Quad CabCAMTM HD Touch Screen Camera System

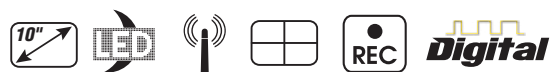
Big views. wireless!

(1) HD Weatherproof Digital Color Camera

- Infrared Illuminators allow up to 32 feet of night visibility
- 130 yard transmission range
- Image mirroring capability
- Designed to handle off-road conditions
- Audio capability
- Cameras require 12V-24V power source

10" HD Digital Quad Monitor

- 4 Camera capability
- 2.4GHz digital WiRELESS receiver
- Audio speaker
- Recording capability on 128GB Micro SD/TF card (not included)
- 27 Pin wire harness



Accessories

- Ball Swivel Mounting Bracket with Mounting Pad
- Stationary Mounting Bracket with Thumb Screws
- Sunshield
- Automotive Power Adapter
- Hard Wire Power Adapter



Not compatible with analog cameras. Must use A-HDC2673 or A-HDC1326 HDdigital cameras. See the WiRELESS camera page for more info. 4 cameras can be "paired" to this monitor. Cameras can only be "paired" to one monitor. For situations where one camera needs to be viewed on several monitors see our analog WiRELESS system.

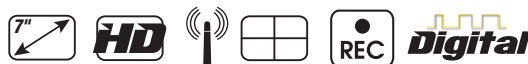
A-CWM7 7" SD Analog Color Monitor

- For use with SD WIRELESS CabCAM™ systems with analog transmission
- Standard Definition color LCD monitor with antenna
- 2.4GHz analog WIRELESS receiver with four channels and four camera capability
- Audio Speaker, Remote Control, 6-Pin Wire Harness
- Power indicator, remote receiving window, POWER, MENU, Brightness, Channel, & SELECT buttons



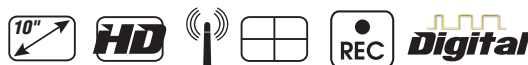
A-HDM2047 7" HD Digital Color Quad Monitor

- For use with HD WIRELESS Quad CabCAM™ system with digital transmission
- High Definition color LCD screen with antenna
- 2.4GHz digital WIRELESS receiver and four camera capability
- Split Screen & Picture-in-picture capability
- Audio Speaker, Remote Control, 27-Pin Wire Harness
- Ball Swivel & Stationary Mounting Brackets, Sunshield, Hard-wire Power Adapter
- Brightness, contrast, color, hue, mirror & upside down functions can be set for each individual camera
- Camera default names are "LEFT," "RIGHT," "FRONT," and "BACK." This function can be turned off or cameras can be renamed up to eight characters long
- Power indicator, remote receiving window, POWER, MENU, Brightness, Channel, & SELECT buttons
- Recording capability on 128GB Micro SD/TF card (not included)
- 12V-24V
- Replaces A-DW7M



A-HDM2098 10" HD Digital Touch Screen Color Quad Monitor

- For use with HD WIRELESS Quad CabCAM™ system with digital transmission
- High Definition color LCD screen with antenna
- 2.4GHz digital WIRELESS receiver and four camera capability
- Split Screen & Picture-in-picture capability
- Audio Speaker, Remote Control, 27-Pin Wire Harness
- Ball Swivel & Stationary Mounting Brackets, Sunshield, Hard-wire Power Adapter
- Brightness, contrast, color, hue, mirror & upside down functions can be set for each individual camera
- Camera default names are "LEFT," "RIGHT," "FRONT," and "BACK." This function can be turned off or cameras can be renamed up to eight characters long
- Power indicator, remote receiving window, POWER, MENU, Brightness, Channel, & SELECT buttons
- Recording capability on 128GB Micro SD/TF card (not included)
- 12V-24V



WiRELESS Cameras & Monitors

A-WCCH1 A-WCCH3

A-WCCH2 A-WCCH4

SD Analog WiRELESS 110° Color Camera

- For use with WiRELESS CabCAM™ systems with analog transmission
- Channel 1, Channel 2, Channel 3, and Channel 4 cameras for 4 channel systems
- Infrared illuminators allow up to 32' of night visibility
- Power supply jack
- 3' DC adapter wire included
- Weatherproof and constructed to withstand off-road conditions
- Audio capabilities



A-HDC2673

HD Digital WiRELESS 110° Color Camera

- For use with HD WiRELESS CabCAM™ systems with digital transmission; A-HDS2054 & A-HDS2105 only
- Infrared illuminators allow up to 32' of night visibility
- Power supply jack
- 3' DC adapter wire included
- Weatherproof and constructed to withstand off-road conditions
- Audio capabilities



A-HDC1326

HD Digital WiRELESS 110° Color Camera

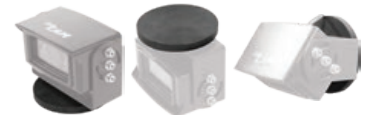
- For use with HD WiRELESS CabCAM™ systems with digital transmission; A-HDS2054 & A-HDS2105 only
- White LED illuminators for better visibility and color quality up to 32' of night visibility
- Power supply jack
- 3' DC adapter wire included
- Weatherproof and constructed to withstand off-road conditions
- Audio capabilities
- Use in air-seeder tanks and other dark areas



A-MG539

Magnet Camera Mount

- For use with CabCAM™ cameras utilizing the standard U-bracket
- For cameras with V-bracket mount
- Mount a CabCAM™ camera to any magnetic surface
- Ultra strong
- Rubber coated to protect paint
- 3.22" diameter



Analogue WiRELESS

Analogue wireless is the only solution when installing monitors in several machines with the intent to pick up a single camera or a single set of cameras. This is perfect for lining up trucks with a forage harvester or combine.



A-WA3 **WiRELESS Antenna**

- For use with 7" WiRELESS CabCAM™ Analog & Digital monitors, WiRELESS Cameras
- 4.5" long
- Weatherproof



A-HDA091 **WiRELESS Antenna**

- For use with WiRELESS CabCAM™ monitor A-HDM2098 ONLY
- Weatherproof



A-ANT53 **WiRELESS Magnetic Antenna**

- For use with 7" WiRELESS CabCAM™ Analog & Digital monitors, WiRELESS Cameras
- 9.75' external cord
- Weatherproof
- 5dB



A-ANT638 **WiRELESS Patch Antenna**

- For use with 7" WiRELESS CabCAM™ Analog & Digital monitors, WiRELESS Cameras
- 9.75' external cord
- Weatherproof
- 3dB



A-AEC16 **WiRELESS Antenna Ext. Cord**

- For use with 7" WiRELESS CabCAM™ Analog & Digital monitors, WiRELESS Cameras
- 16'



A-AD520 **Voltage Reducer Adapter**

- For use with WiRELESS CabCAM™ systems
- For 12 volt WiRELESS cameras, this reducer allows cameras to be used on machines having higher voltage systems
- Bare power & ground wires on one end



A-DCW1 **DC Adapter Wire**

- For use with CabCAM™ systems
- 3' long
- (5) pack



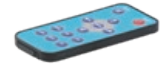
A-PVAKIT **Power/Video Kit**

- For use with CabCAM™ systems
- 2000 mA AC adapter
- Automotive power adapter
- AV conversion cable



A-HDRM **HD Remote Control**

- For use with HD CabCAM™ systems



A-HNSW7 **8 Pin Wire Harness**

- For use with WiRELESS CabCAM™ 7" monitors with analog transmission
- Jack for AC/automotive power adapter/DC adapter



A-HNS27 **Quad Digital WiRELESS Harness**

- For use with WiRELESS CabCAM™ Quad monitors with digital transmission
- Jack for AC/automotive power adapter/DC adapter



A-BRK7M **7" Monitor Bracket Kit**

- For use with A-WL56M2C & A-HDM2047 WiRELESS monitors
- U-support bracket with threaded mounting knobs
- Ball swivel bracket with stick pad
- Flush mount bracket
- Sunshield



A-HD9195BK **10" HD Monitor Bracket Kit**

- For use with A-HDM2098 monitor
- U-support bracket with threaded mounting knobs
- Ball swivel bracket with stick pad
- Sunshield



A-BRK540 **Monitor Bracket**

- 360° horizontal rotation angle, 90° side rotation angle
- Made of aluminum alloy
- Compatible with all CabCAM™ LCD monitors with metal mount slot.
- Mounting hardware not included



CabCAM™

Many GPS units in the Agricultural market offer video capability. If you have a GPS display already installed in your equipment, add video capability with a WIRED CabCAM™ Camera and one of these adapter cables created specifically for your application

ADD A CabCAM™ CAMERA TO AN ALREADY INSTALLED GPS DISPLAY! →



A-ALHNS ADAPTER CABLE

Adapts Ag Leader Integra & Versa

12.5' Cable, 4 Camera Capability

A-CBL20 ADAPTER CABLE

Adapts Ag Cam, Ag Leader Integra, TeeJet Matrix 570G/840G, FW Murphy Powerview 750 w/NTSC format

AGCO displays with PAL operating systems, MUST use CabCAM™ A-PAL110C Camera

A-CBL2630 ADAPTER CABLE

Adapts GS3 2630

10' Cable, 3 Camera Capability

A-GS3C ADAPTER CABLE

Adapts GS3 & GS4 Command Center, 4100 & 4600 Display; 7R, 8R, & 9R Series JD Tractors, S Series Combines, & Sprayers

20' Cable, Single Camera Capability

A-GS3C1F ADAPTER CABLE

Adapts GS3 & GS4 Command Center, 4100 & 4600 Display; 7R, 8R, & 9R Series JD Tractors, S Series Combines, & Sprayers

1' Cable, Single Camera Capability

A-CBL6R ADAPTER CABLE

Adapts GS3 Command Center Integrated Display; 6R Series JD Tractors

20' Cable, Single Camera Capability

A-CBL6989 ADAPTER CABLE

Adapts G3 Command Center Integrated Display; R4023, R4030, R4038, & R4045 JD Sprayers

17" Cable, 2 Camera Capability



GPS Adapter Cables

A-CBL4640 ADAPTER CABLE

*Adapts Gen 4 4640 Universal Display;
JD Tractors, Combines, Sprayers*

142" Cable, Four Camera Capability

A-TRM20 ADAPTER CABLE

Adapts Trimble AgGPS FmX, CFX/FM-750 or FM 1000

20' Cable, Single Camera Capability

A-CBL300 ADAPTER CABLE

*Adapts Case-IH AFS PRO 200, 300, & 700;
New Holland Intelliview II, III, IV*

36" Cable, Single Camera Capability

A-CBL700 ADAPTER CABLE

Adapts Case-IH AFS PRO 700 & New Holland Intelliview IV

72" Cable, 3 Camera Capability

A-CBL5715 ADAPTER CABLE

*Adapts Case-IH Pre-Wired 7230, 7240, 8230, 8240, 9230, &
9240 Combines MY 2014>*

14" Cable, Single Camera Capability

A-CBL800 ADAPTER CABLE

Adapts Voyager

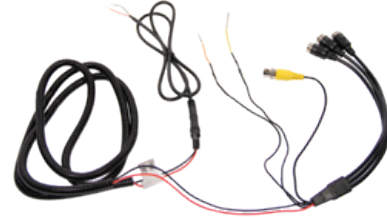
8" Cable

Connect a CabCAM™ camera to a Voyager system/monitor

A-CBL2077 ADAPTER CABLE

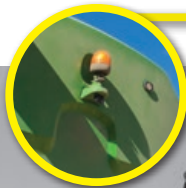
Adapts Raven Viper 4 Monitor

90" Cable, 4 Camera Capability



SEE PAGE 27 FOR INFO ON
PLUG-&-PLAY CAMERAS FOR
JOHN DEERE APPLICATIONS

**PLUG
&
PLAY**



A&I Products offers mounting brackets for a professional finish to your cab when installing a CabCAM™ system. These brackets are available for 8 popular cabs for John Deere, Case-IH, & New Holland Applications.

A-3190MB **MONITOR BRACKET**

For Case-IH 71, 72, & 89 Series

Includes 6" x 9" tray

Fits Case-IH TRACTOR: 7110, 7120, 7130, 7140, 7150, 7210, 7220, 7230, 7240, 7250, 8910, 8920, 8930, 8940, 8950



A-3178MB **MONITOR BRACKET**

For Case-IH MX & Magnum Tier 4

Includes 6" x 9" tray, does not fit 2014 models

Fits Case-IH TRACTOR: Magnum 215, Magnum 245, Magnum 275, Magnum 305, Magnum 335, MX210, MX215, MX230, MX245, MX255, MX285, MX305



A-3155 **MONITOR BRACKET**

For New Holland T-Series

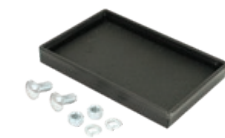
Includes 6" x 9" tray

Fits New Holland TRACTOR: T8010, T8020, T8030, T8040, T8050



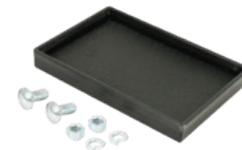
A-3176 **TRAY PAD**

6" x 9"



A-3177 **TRAY PAD**

9" x 9"



A-3189 **MONITOR BRACKET**

For John Deere Sound Guard Cab

Includes 6" x 9" tray

Fits John Deere TRACTOR: 2040, 2140, 2150, 2240, 2255, 2350, 2355, 2440, 2550, 2555, 2640, 2750, 2755, 2840, 2940, 2950, 2955, 3040, 3055, 3140, 3150, 3155, 3255, 4030, 4040, 4050, 4055, 4230, 4240, 4250, 4255, 4430, 4440, 4450, 4455, 4555, 4560, 4630, 4640, 4650, 4755, 4760, 4840, 4850, 4955, 4960, 8430, 8440, 8450, 8630, 8640, 8650, 8850



A-3175 **MONITOR BRACKET**

For John Deere 7000-7010 Series

Includes 6" x 9" tray

Fits John Deere TRACTOR: 7600, 7610, 7700, 7710, 7800, 7810



A-3172 **MONITOR BRACKET**

For John Deere 8000-8020 Series

Includes 6" x 9" tray

Fits John Deere TRACTOR: 8100, 8100T, 8110, 8110T, 8120, 8120T, 8200, 8200T, 8210, 8210T, 8220, 8220T, 8300, 8300T, 8310, 8310T, 8320, 8320T, 8400, 8400T, 8410, 8410T, 8420, 8420T, 8520, 8520T



A-3173 **MONITOR BRACKET**

For John Deere 8030 Series

Includes 6" x 9" tray

Fits John Deere TRACTOR: 7630, 7720, 7730, 7820, 7830, 7920, 7930, 8130, 8230, 8230T, 8330, 8330T, 8430, 8430T, 8530, 9120, 9220, 9230, 9320, 9320T, 9330, 9420, 9420T, 9430, 9430T, 9520, 9520T, 9530, 9530T, 9620, 9620T, 9630, 9630T



A-3174 **MONITOR BRACKET**

For John Deere R Series

Includes 6" x 9" tray

Fits John Deere TRACTOR: 7200R, 7215R, 7230R, 7260R, 7280R, 8225R, 8235R, 8245R, 8260R, 8270R, 8285R, 8295R, 8295RT, 8310R, 8310RT, 8320R, 8320RT, 8335R, 8335RT, 8345R, 8345RT, 8360R, 8360RT, 9360R, 9410R, 9460R, 9460RT, 9510R, 9510RT, 9560R, 9560RT





Download the CabCAM™ app on Google Play or the Apple App Store and use your phone or tablet with CabCAM™ HD WiFi cameras.



A-WFC697 HD Wifi 110° Color Camera

- For use with the CabCAM™ App on compatible phones and tablets
- Infrared illuminators allow up to 32' of night visibility
- 196' (60M) transmission range when connected to one device
- Can be connected to up to 4 devices at once, but reduces transmission range significantly (32', 10M)
- Lithium-ion battery, rechargeable
- Includes AC adapter and USB charging cables (3hr/8hr recharge time)
- Battery lasts up to 12 hours, will consume charge quicker when infrared illuminators are activated
- Strong magnetic base
- Weatherproof and constructed to withstand off-road conditions
- Audio capabilities



A-WFC673 HD Wifi 110° Color Camera

- For use with the CabCAM™ App on compatible phones and tablets
- Infrared illuminators allow up to 32' of night visibility
- 196' (60M) transmission range when connected to one device
- Can be connected to up to 4 devices at once, but reduces transmission range significantly (32', 10M)
- Power supply jack
- 3' DC adapter wire included
- Weatherproof and constructed to withstand off-road conditions
- Audio capabilities



A-ANT311 Antenna

- For A-WFC697



A-ANT373 Antenna

- For A-WFC673 & A-WFT473



A-WFT473 HD Wifi Transmitter

- For use with the CabCAM™ App on compatible phones and tablets & wired CabCAM™ cameras
- HD camera required for HD to display in HD resolution. Non-HD cameras are compatible, but will display in standard definition.
- 196' (60M) transmission range when connected to one device
- Can be connected to up to 4 devices at once, but reduces transmission range significantly (32', 10M)
- Power supply jack
- 3' DC adapter wire included
- Can be used on 12-24 volt applications
- Weatherproof metal housing



A-RCV320 Port Plug

- For A-WFC697



A-CBL2050 USB Power Cable

- For A-WFC697
- 20.5"





A-MC110S 110° CabCAM™ Camera

This camera is a plug-and-play solution for 2017 and newer John Deere S-Series combines fitted with mounts and wiring for cameras overseeing the unloading auger, grain tank, and rear view. This camera also works with other John Deere machines with factory camera wiring including, Tractors, Sprayers, Forage Harvesters, Sugar Cane Harvesters, & more.*

- Direct plug & play
- Mounting bracket features 4-hole bolt pattern for direct fitment
- Includes all mounting hardware (not shown)

SPECIFICATIONS

- Weatherproof
- Color video with audio, Image mirroring capable
- 110° Viewing Angle
- Automatic Infrared Illuminators allow night vision to 32'

These cameras and cables are not compatible with standard CabCAM™ camera observation systems

**Verify mounting capability with these applications*



Cab
CAM™

A-PVC20S
A-PVC65S

20' Extension Cable
65' Extension Cable

Extension cables are available if relocating the cameras from the factory mount is desired.



Cab **CAM**™

INSIDE INCLUDES:

- **WIRED STANDARD DEFINITION SYSTEM**
- **WIRED HIGH DEFINITION SYSTEMS**
- **WIRED CAMERAS**
- **WIRED MONITORS**
- **ACCESSORIES**
- **GPS ADAPTER CABLES**
- **WIRELESS STANDARD DEFINITION SYSTEM**
- **WIRELESS HIGH DEFINITION SYSTEMS**
- **WIRELESS CAMERAS**
- **WIRELESS MONITORS**
- **WIFI CAMERAS**
- **CAB MOUNTS**

www.theCabCAM.com

Available at your local A&I Products Reseller