



BONDI

EBL301-60/120 TC

Read this user guide carefully before installation, and keep for future reference.

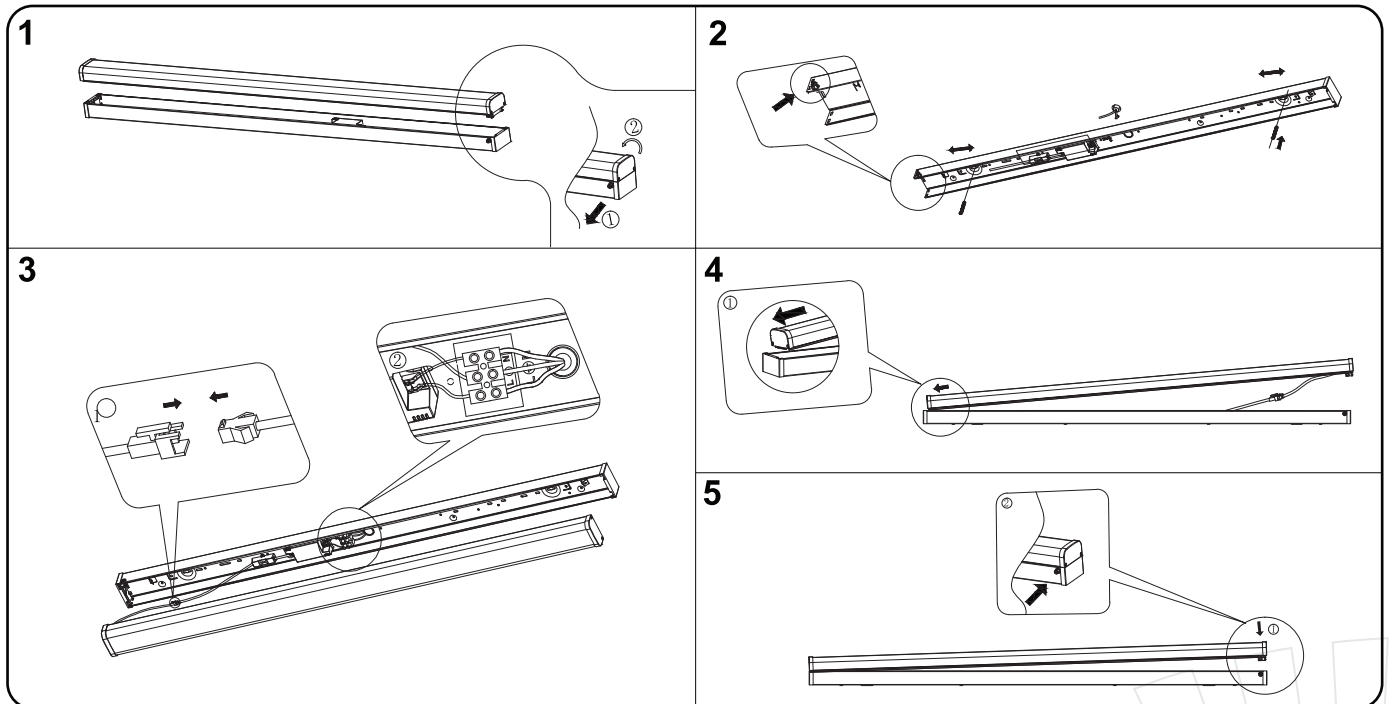
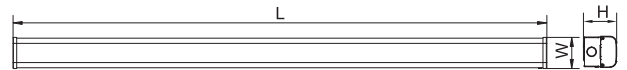
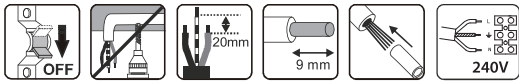
INSTALLATION GUIDE

▲ The installation and maintenance work should be performed by a qualified electrician.

▲ Isolate power before installation.

▲ Warranty void if product had been altered or tampered with.

MODEL NO.	INPUT VOLTAGE (V)	POWER (W)	LUMEN (lm)	COLOUR TEMPERATURE (K)	BEAM ANGLE (°)	CRI	DIMENSIONS (L×W×H) (mm)	IP	IK	FITTING COLOUR
EBL301-60 TC	240	20	2100/2200/2300	3000/4000/5700	120	>80	615 X 71 X 76	50	NA	White
EBL301-120 TC	240V	40	4200/4400/4300	3000/4000/5700	120	>80	1221 X 71 X 76	50	NA	White



WARRANTY

In accordance with **elekzon's** standard terms and conditions of sale, **elekzon** warrant this product to be free from defects in materials and or workmanship for a period as stated below for goods not subject to incorrect installation, maintenance, operation, mishandling, environmental, unauthorised modifications or electrical operating conditions outside the nominated product specification as detailed in these installation instructions. The benefits to you given by this warranty are in addition to other rights and remedies you have under law. Our goods come with guarantees that cannot be excluded under the Australian Consumer Law. You are entitled to a replacement or refund for a major failure and compensation for any other reasonably foreseeable loss or damage. You are also entitled to have the goods repaired or replaced if the goods fail to be of acceptable quality and the failure does not amount to a major failure.

Warranty term – Sixty(60) months from date of purchase.

NOTE:

elekzon encourages recycling, please consider the environment when disposing off packaging and components. As a guide for continual operation installations, a twelve (12) hour duration for Industrial and Commercial applications and six (6) hour duration for Residential applications should be considered.

