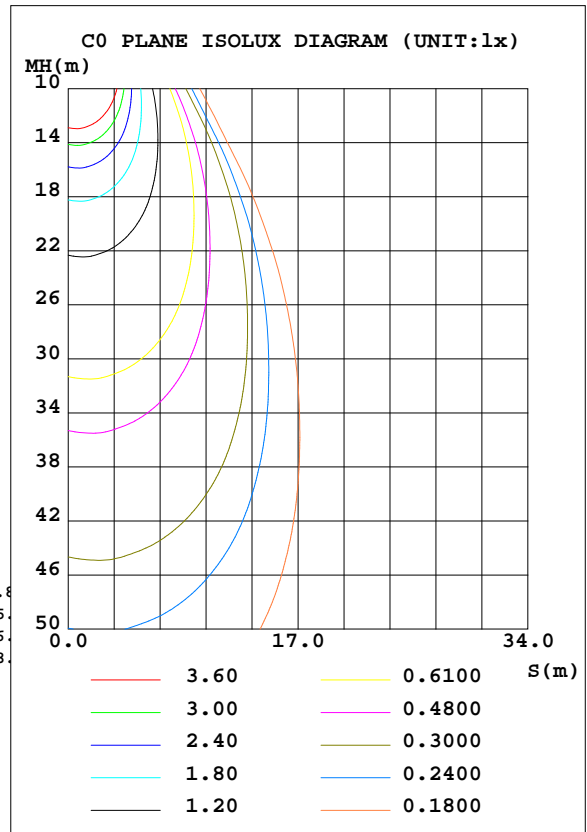
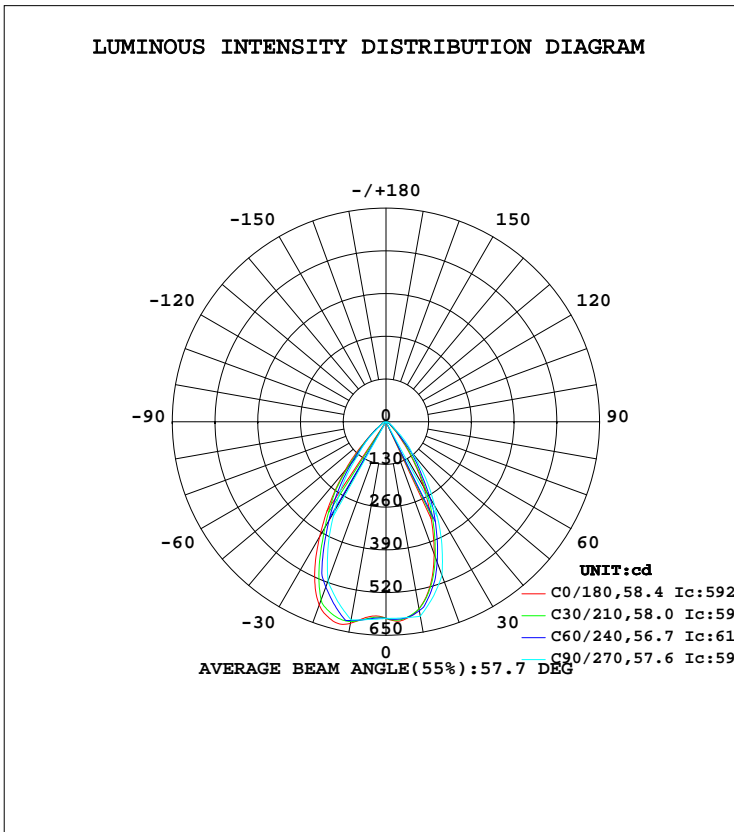


LUMINAIRE PHOTOMETRIC TEST REPORT

Test:U:220.07V I:0.0367A P:7.7634W PF:0.9601 Freq:50.01Hz Lamp Flux:634.405x1 lm		
NAME: EDL110-1 WW WH	TYPE:	WEIGHT:
SPEC.:10W	DIM.:	SERIAL No.:
MFR.: OBALS	SUR.:47mm	Shielding Angle:

DATA OF LAMP		PHOTOMETRIC DATA Eff: 81.72 lm/W			
MODEL	11202P430E39 3000K	I _{max} (cd)	631.4	S/MH(C0/180)	1.02
NOMINAL POWER(W)	10	LOR(%)	100.0	S/MH(C90/270)	0.93
RATED VOLTAGE(V)	220-240	TOTAL FLUX(lm)	634.41	η UP, DN(C0-180)	0.0,49.0
NOMINAL FLUX(lm)	634.405	CIE CLASS	DIRECT	η UP, DN(C180-360)	0.0,51.0
LAMPS INSIDE	1	η up(%)	0.0	CIBSE SHR NOM	0.75
TEST VOLTAGE(V)		η down(%)	100.0	CIBSE SHR MAX	0.95



H(β) Range:-90 - 90DEG
H(β) Interval: 1.0DEG
Test Speed: HIGH
Temperature:25DEG
Operators:
Test Date:2019-10-10

V(B) Range:-80 - 80DEG
V(B) Interval: 5.0DEG
Test System:EVERFINE GO-2000A_V1 SYSTEM V2.0.402
Humidity:65.0%
Test Distance:6.880m [K=1.0000]
Remarks:

ZONAL FLUX DIAGRAM

ZONAL FLUX DIAGRAM:

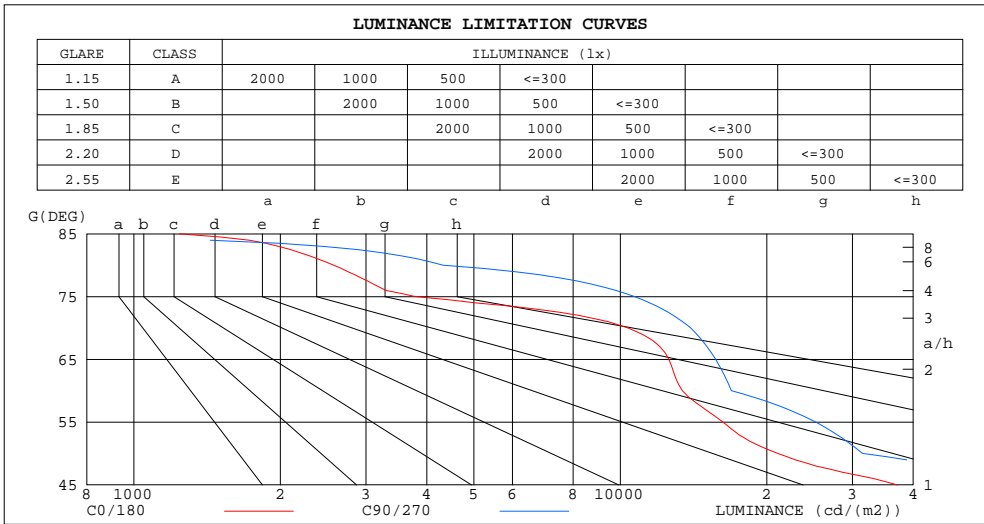
γ	C0	C45	C90	C135	C180	C225	C270	C315	γ	Φ zone	Φ total	Φ lum,lamp
10	578.0	579.0	601.0	615.3	622.6	615.1	612.4	588.5	0- 10	57.46	57.46	9.06,9.06
20	428.8	449.1	498.0	543.1	593.9	544.0	516.4	461.5	10- 20	157.7	215.1	33.9,33.9
30	230.6	253.0	296.4	359.8	403.9	369.9	312.3	259.8	20- 30	186.7	401.9	63.3,63.3
40	79.45	95.13	123.3	164.5	193.1	176.6	133.4	96.10	30- 40	134.0	535.9	84.5,84.5
50	23.42	26.03	35.01	45.21	54.74	51.21	38.24	26.40	40- 50	60.24	596.1	94,94
60	11.60	12.72	14.64	16.51	17.50	16.57	15.06	12.93	50- 60	21.36	617.5	97.3,97.3
70	6.131	6.800	8.259	8.703	9.390	9.207	8.880	7.275	60- 70	11.10	628.6	99.1,99.1
80	0.7734	1.291	1.298	2.869	3.122	3.399	1.047	1.762	70- 80	5.190	633.8	99.9,99.9
90	0.1158	0	0	0	0.0864	0	0	0	80- 90	0.6506	634.4	100,100
100									90-100			
110									100-110			
120									110-120			
130									120-130			
140									130-140			
150									140-150			
160									150-160			
170									160-170			
180									170-180			
DEG	LUMINOUS INTENSITY:cd									UNIT:lm		

H(β) Range:-90 - 90DEG
H(β) Interval: 1.0DEG
Test Speed: HIGH
Temperature:25DEG
Operators:
Test Date:2019-10-10

V(B) Range:-80 - 80DEG
V(B) Interval: 5.0DEG
Test System:EVERFINE GO-2000A_V1 SYSTEM V2.0.402
Humidity:65.0%
Test Distance:6.880m [K=1.0000]
Remarks:

LUMINANCE LIMITATION CURVES

Test:U:220.07V I:0.0367A P:7.7634W PF:0.9601 Freq:50.01Hz Lamp Flux:634.405x1 lm		
NAME: EDL110-1 WW WH	TYPE:	WEIGHT:
SPEC.:10W	DIM.:	SERIAL No.:
MFR.: OBALS	SUR.:47mm	Shielding Angle:



LUMINANCE cd/(m2)		
G(DEG)	C0/180	C90/270
85	1241	0
80	2574	4320
75	3790	10701
70	10362	13959
65	12581	15706
60	13412	16920
55	16256	25233
50	21063	31483
45	37086	65324

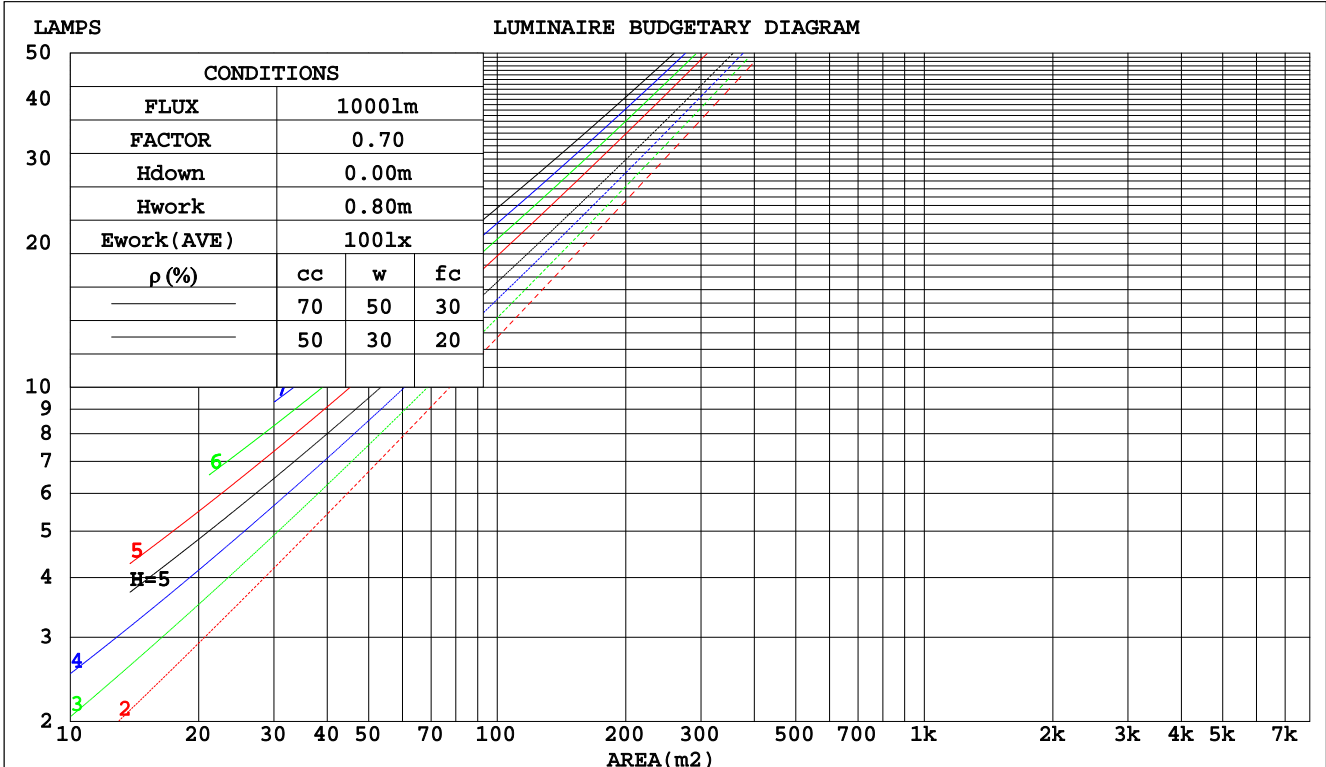
H(β) Range:-90 - 90DEG
H(β) Interval: 1.0DEG
Test Speed: HIGH
Temperature:25DEG
Operators:
Test Date:2019-10-10

V(B) Range:-80 - 80DEG
V(B) Interval: 5.0DEG
Test System:EVERFINE GO-2000A_V1 SYSTEM V2.0.402
Humidity:65.0%
Test Distance:6.880m [K=1.0000]
Remarks:

CU AND LUMINAIRE BUDGETARY ESTIMATE DIAGRAM

Test:U:220.07V I:0.0367A P:7.7634W PF:0.9601 Freq:50.01Hz Lamp Flux:634.405x1 lm		
NAME: EDL110-1 WW WH	TYPE:	WEIGHT:
SPEC.:10W	DIM.:	SERIAL No.:
MFR.: OBALS	SUR.:47mm	Shielding Angle:

pcc	80%			70%			50%			30%			10%			0
	50%	30%	10%	50%	30%	10%	50%	30%	10%	50%	30%	10%	50%	30%	10%	0
pw																
pfc	20%			20%			20%			20%			20%			0
RCR	RCR:Room Cavity Ratio						Coefficients of Utilization(CU)									
0.0	1.19	1.19	1.19	1.16	1.16	1.16	1.11	1.11	1.11	1.06	1.06	1.06	1.02	1.02	1.02	.00
1.0	1.10	1.07	1.05	1.08	1.05	1.03	1.04	1.02	.00	.00	.98	.97	.96	.95	.94	.92
2.0	1.01	.97	.93	.00	.96	.92	.96	.93	.90	.93	.91	.88	.90	.88	.86	.85
3.0	.94	.88	.84	.92	.87	.83	.90	.85	.82	.87	.84	.81	.85	.82	.79	.78
4.0	.87	.81	.76	.86	.80	.76	.83	.79	.75	.81	.77	.74	.80	.76	.73	.71
5.0	.81	.74	.70	.80	.74	.69	.78	.73	.69	.76	.72	.68	.75	.71	.68	.66
6.0	.75	.69	.64	.75	.68	.64	.73	.68	.64	.72	.67	.63	.70	.66	.63	.61
7.0	.70	.64	.59	.70	.64	.59	.68	.63	.59	.67	.62	.59	.66	.62	.58	.57
8.0	.66	.60	.55	.65	.59	.55	.64	.59	.55	.63	.58	.55	.62	.58	.54	.53
9.0	.62	.56	.52	.62	.56	.51	.61	.55	.51	.60	.55	.51	.59	.54	.51	.49
10.0	.59	.52	.48	.58	.52	.48	.57	.52	.48	.56	.51	.48	.56	.51	.48	.46



H(β) Range:-90 - 90DEG
H(β) Interval: 1.0DEG
Test Speed: HIGH
Temperature:25DEG
Operators:
Test Date:2019-10-10

V(B) Range:-80 - 80DEG
V(B) Interval: 5.0DEG
Test System:EVERFINE GO-2000A_V1 SYSTEM V2.0.402
Humidity:65.0%
Test Distance:6.880m [K=1.0000]
Remarks:

WEC AND CCEC

Test:U:220.07V I:0.0367A P:7.7634W PF:0.9601 Freq:50.01Hz Lamp Flux:634.405x1 lm		
NAME: EDL110-1 WW WH	TYPE:	WEIGHT:
SPEC.:10W	DIM.:	SERIAL No.:
MFR.: OBALS	SUR.:47mm	Shielding Angle:

ρcc	80%			70%			50%			30%			10%			0
ρw	50%	30%	10%	50%	30%	10%	50%	30%	10%	50%	30%	10%	50%	30%	10%	0
ρfc	20%			20%			20%			20%			20%			0
RCR	RCR:Room Cavity Ratio						Wall Exitance Coefficients(WEC)									
0.0																
1.0	.195	.111	.035	.188	.107	.034	.175	.101	.032	.164	.094	.030	.153	.089	.029	
2.0	.187	.103	.031	.182	.100	.031	.171	.095	.029	.161	.090	.028	.152	.086	.027	
3.0	.178	.095	.028	.173	.093	.028	.164	.089	.027	.156	.085	.026	.148	.082	.025	
4.0	.169	.088	.026	.165	.086	.026	.157	.083	.025	.150	.080	.024	.143	.077	.024	
5.0	.161	.082	.024	.157	.081	.023	.150	.078	.023	.143	.076	.023	.137	.073	.022	
6.0	.153	.077	.022	.150	.076	.022	.143	.074	.021	.138	.072	.021	.132	.070	.021	
7.0	.146	.072	.020	.143	.071	.020	.137	.069	.020	.132	.068	.020	.127	.066	.019	
8.0	.139	.068	.019	.136	.067	.019	.131	.066	.019	.127	.064	.019	.122	.063	.018	
9.0	.133	.064	.018	.130	.063	.018	.126	.062	.018	.122	.061	.017	.118	.060	.017	
10.0	.127	.061	.017	.125	.060	.017	.121	.059	.017	.117	.058	.017	.113	.057	.016	

ρcc	80%			70%			50%			30%			10%			0
ρw	50%	30%	10%	50%	30%	10%	50%	30%	10%	50%	30%	10%	50%	30%	10%	0
ρfc	20%			20%			20%			20%			20%			0
RCR	RCR:Room Cavity Ratio						Ceiling Cavity Exitance Coefficients(CCEC)									
0.0	.190	.190	.190	.163	.163	.163	.111	.111	.111	.064	.064	.064	.020	.020	.020	
1.0	.172	.157	.143	.147	.135	.123	.101	.093	.085	.058	.054	.050	.019	.017	.016	
2.0	.158	.132	.111	.136	.114	.096	.093	.079	.067	.054	.046	.039	.017	.015	.013	
3.0	.147	.114	.087	.126	.098	.076	.086	.068	.053	.050	.040	.031	.016	.013	.010	
4.0	.137	.099	.070	.118	.086	.061	.081	.060	.043	.047	.035	.025	.015	.011	.008	
5.0	.129	.088	.058	.111	.076	.050	.076	.053	.035	.044	.031	.021	.014	.010	.007	
6.0	.122	.079	.048	.105	.068	.042	.072	.048	.030	.042	.028	.018	.014	.009	.006	
7.0	.115	.071	.040	.099	.062	.035	.069	.043	.025	.040	.026	.015	.013	.008	.005	
8.0	.110	.065	.035	.094	.057	.030	.065	.040	.021	.038	.023	.013	.012	.008	.004	
9.0	.104	.060	.030	.090	.052	.026	.062	.037	.019	.036	.022	.011	.012	.007	.004	
10.0	.100	.056	.026	.086	.048	.023	.060	.034	.016	.035	.020	.010	.011	.007	.003	

H(β) Range:-90 - 90DEG
H(β) Interval: 1.0DEG
Test Speed: HIGH
Temperature:25DEG
Operators:
Test Date:2019-10-10

V(B) Range:-80 - 80DEG
V(B) Interval: 5.0DEG
Test System:EVERFINE GO-2000A_V1 SYSTEM V2.0.402
Humidity:65.0%
Test Distance:6.880m [K=1.0000]
Remarks:

UGR(Unified Glare Rating) Table

Test:U:220.07V I:0.0367A P:7.7634W PF:0.9601 Freq:50.01Hz Lamp Flux:634.405x1 lm										
NAME: EDL110-1 WW WH					TYPE:			WEIGHT:		
SPEC.:10W					DIM.:			SERIAL No.:		
MFR.: OBALS					SUR.:47mm			Shielding Angle:		
ceiling/cavity	0.7	0.7	0.5	0.5	0.3	0.7	0.7	0.5	0.5	0.3
walls	0.5	0.3	0.5	0.3	0.3	0.5	0.3	0.5	0.3	0.3
working plane	0.2	0.2	0.2	0.2	0.2	0.2	0.2	0.2	0.2	0.2
Room dimensions	Viewed crosswise					Viewed endwise				
x = 2H y = 2H	21.9	22.9	22.1	23.1	23.3	23.4	24.4	23.6	24.6	24.7
3H	22.1	23.0	22.3	23.2	23.4	23.5	24.5	23.8	24.7	24.9
4H	22.1	23.0	22.3	23.2	23.4	23.6	24.5	23.9	24.7	24.9
6H	22.0	22.8	22.3	23.1	23.3	23.6	24.4	23.9	24.6	24.9
8H	21.9	22.8	22.2	23.0	23.3	23.5	24.3	23.8	24.6	24.8
12H	21.9	22.7	22.2	22.9	23.2	23.5	24.2	23.8	24.5	24.8
4H 2H	21.9	22.8	22.1	23.0	23.2	23.2	24.2	23.5	24.4	24.6
3H	22.2	22.9	22.5	23.2	23.5	23.5	24.3	23.8	24.6	24.9
4H	22.2	22.9	22.5	23.2	23.5	23.6	24.3	24.0	24.6	25.0
6H	22.1	22.7	22.5	23.1	23.4	23.6	24.2	24.0	24.6	24.9
8H	22.1	22.6	22.5	23.0	23.4	23.6	24.2	24.0	24.5	24.9
12H	22.0	22.5	22.4	22.9	23.3	23.5	24.1	24.0	24.4	24.8
8H 4H	22.1	22.7	22.5	23.0	23.4	23.6	24.1	23.9	24.5	24.9
6H	22.1	22.5	22.5	22.9	23.3	23.6	24.0	24.0	24.4	24.8
8H	22.0	22.4	22.5	22.9	23.3	23.5	23.9	24.0	24.4	24.8
12H	22.0	22.3	22.4	22.8	23.2	23.5	23.8	23.9	24.3	24.7
12H 4H	22.1	22.6	22.5	23.0	23.4	23.5	24.0	23.9	24.4	24.8
6H	22.0	22.4	22.5	22.9	23.3	23.5	23.9	24.0	24.3	24.8
8H	22.0	22.3	22.5	22.8	23.2	23.5	23.8	23.9	24.3	24.7
Variations with the observer position at spacings:										
S = 1.0H	+ 1.8 / - 3.3					+ 2.3 / - 3.0				
1.5H	+ 3.0 / - 2.9					+ 3.8 / - 3.5				
2.0H	+ 3.2 / - 1.9					+ 4.6 / - 2.4				

CIE Pub.117, 634.4 lm Total Lamp Luminous Flux Correct (8log(F/F0) = -1.6)

H(β) Range:-90 - 90DEG
H(β) Interval: 1.0DEG
Test Speed: HIGH
Temperature:25DEG
Operators:
Test Date:2019-10-10

V(B) Range:-80 - 80DEG
V(B) Interval: 5.0DEG
Test System:EVERFINE GO-2000A_V1 SYSTEM V2.0.402
Humidity:65.0%
Test Distance:6.880m [K=1.0000]
Remarks:

UTILIZATION FACTORS TABLE

Test:U:220.07V I:0.0367A P:7.7634W PF:0.9601 Freq:50.01Hz Lamp Flux:634.405x1 lm		
NAME: EDL110-1 WW WH	TYPE:	WEIGHT:
SPEC.:10W	DIM.:	SERIAL No.:
MFR.: OBALS	SUR.:47mm	Shielding Angle:

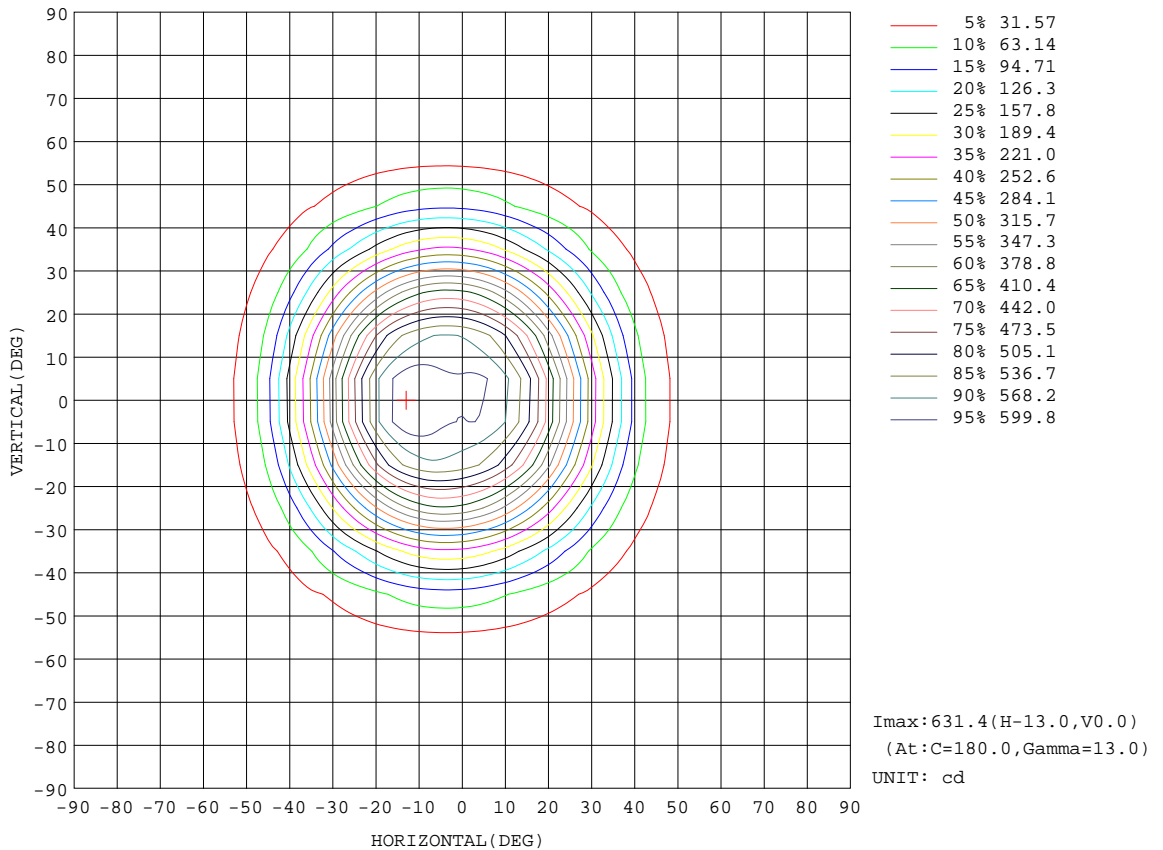
REFLECTANCE										
Ceiling	0.8	0.8	0.8	0.7	0.7	0.7	0.5	0.5	0.5	0
Walls	0.7	0.5	0.3	0.7	0.5	0.3	0.7	0.5	0.3	0
Working plane	0.2	0.2	0.2	0.2	0.2	0.2	0.2	0.2	0.2	0
ROOM INDEX	UTILIZATION FACTORS(PERCENT) $k(RI) \times RCR = 5$									
k = 0.60	82	74	70	81	74	70	80	74	70	66
0.80	90	83	79	89	83	79	88	82	78	74
1.00	95	89	85	95	88	84	93	89	84	79
1.25	100	94	90	99	93	90	97	92	89	84
1.50	103	98	94	102	97	93	100	95	92	87
2.00	107	102	98	105	101	97	102	99	96	90
2.50	109	104	101	107	103	100	104	101	98	92
3.00	110	107	103	109	105	102	105	102	100	93
4.00	113	110	107	111	108	106	107	105	103	96
5.00	114	111	109	112	110	108	108	106	105	97
ROOM INDEX	UF(total)									Direct
According to DIN EN 13032-2 2004			Suspended				SHRNOM = 1.25			

H(β) Range:-90 - 90DEG
H(β) Interval: 1.0DEG
Test Speed: HIGH
Temperature:25DEG
Operators:
Test Date:2019-10-10

V(B) Range:-80 - 80DEG
V(B) Interval: 5.0DEG
Test System:EVERFINE GO-2000A_V1 SYSTEM V2.0.402
Humidity:65.0%
Test Distance:6.880m [K=1.0000]
Remarks:

ISOCANDELA DIAGRAM

Test:U:220.07V I:0.0367A P:7.7634W PF:0.9601 Freq:50.01Hz Lamp Flux:634.405x1 lm		
NAME: EDL110-1 WW WH	TYPE:	WEIGHT:
SPEC.:10W	DIM.:	SERIAL No.:
MFR.: OBALS	SUR.:47mm	Shielding Angle:

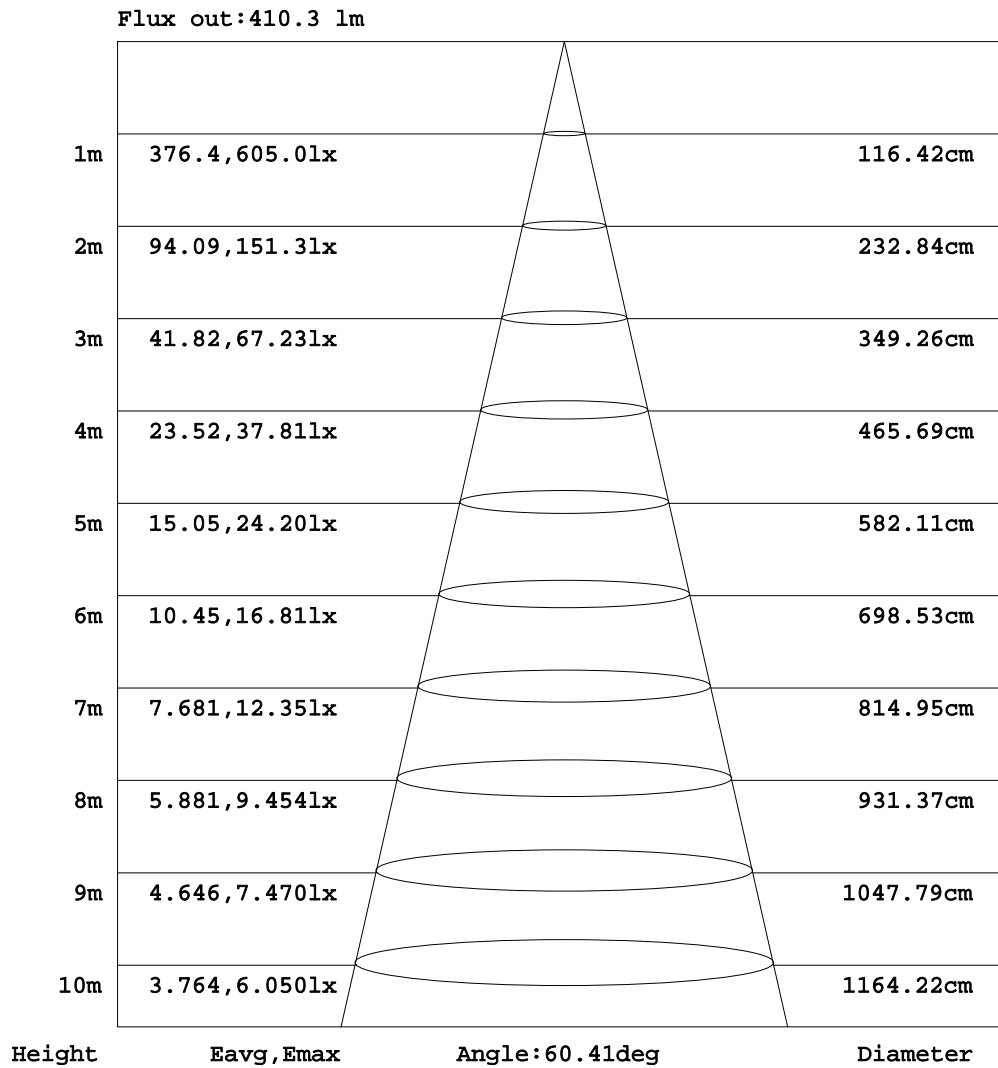


H(β) Range:-90 - 90DEG
 H(β) Interval: 1.0DEG
 Test Speed: HIGH
 Temperature:25DEG
 Operators:
 Test Date:2019-10-10

V(B) Range:-80 - 80DEG
 V(B) Interval: 5.0DEG
 Test System:EVERFINE GO-2000A_V1 SYSTEM V2.0.402
 Humidity:65.0%
 Test Distance:6.880m [K=1.0000]
 Remarks:

AAI Figure

Test:U:220.07V I:0.0367A P:7.7634W PF:0.9601 Freq:50.01Hz Lamp Flux:634.405x1 lm		
NAME: EDL110-1 WW WH	TYPE:	WEIGHT:
SPEC.:10W	DIM.:	SERIAL No.:
MFR.: OBALS	SUR.:47mm	Shielding Angle:



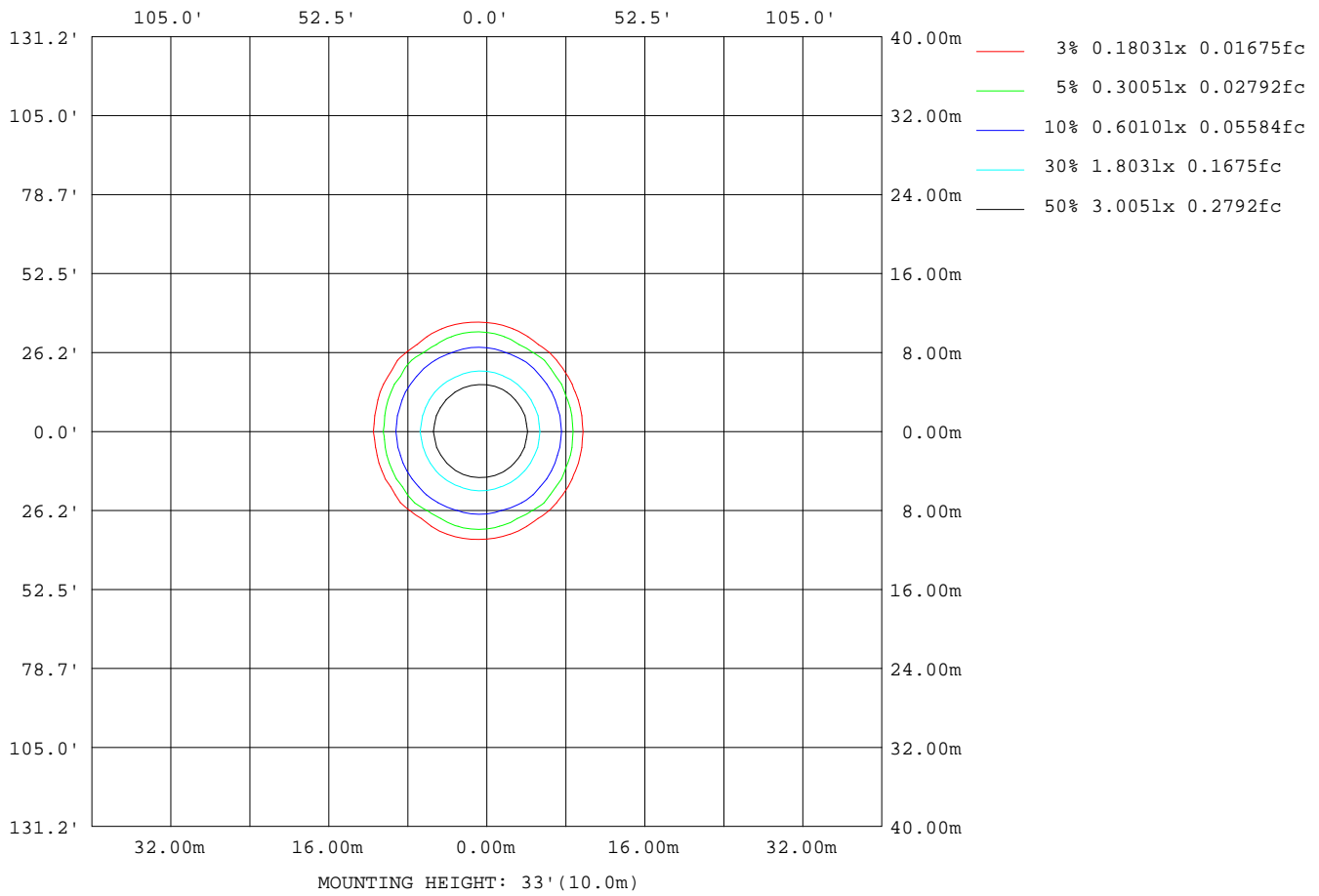
Note: The Curves indicate the illuminated area and the average illumination when the luminaire is at different distance.

H(β) Range:-90 - 90DEG
H(β) Interval: 1.0DEG
Test Speed: HIGH
Temperature:25DEG
Operators:
Test Date:2019-10-10

V(B) Range:-80 - 80DEG
V(B) Interval: 5.0DEG
Test System:EVERFINE GO-2000A_V1 SYSTEM V2.0.402
Humidity:65.0%
Test Distance:6.880m [K=1.0000]
Remarks:

ISOLUX DIAGRAM

Test:U:220.07V I:0.0367A P:7.7634W PF:0.9601 Freq:50.01Hz Lamp Flux:634.405x1 lm		
NAME: EDL110-1 WW WH	TYPE:	WEIGHT:
SPEC.:10W	DIM.:	SERIAL No.:
MFR.: OBALS	SUR.:47mm	Shielding Angle:



H(β) Range:-90 - 90DEG
H(β) Interval: 1.0DEG
Test Speed: HIGH
Temperature:25DEG
Operators:
Test Date:2019-10-10

V(B) Range:-80 - 80DEG
V(B) Interval: 5.0DEG
Test System:EVERFINE GO-2000A_V1 SYSTEM V2.0.402
Humidity:65.0%
Test Distance:6.880m [K=1.0000]
Remarks:

LED Avg.L Report

Test:U:220.07V I:0.0367A P:7.7634W PF:0.9601 Freq:50.01Hz Lamp Flux:634.405x1 lm		
NAME: EDL110-1 WW WH	TYPE:	WEIGHT:
SPEC.:10W	DIM.:	SERIAL No.:
MFR.: OBALS	SUR.:47mm	Shielding Angle:

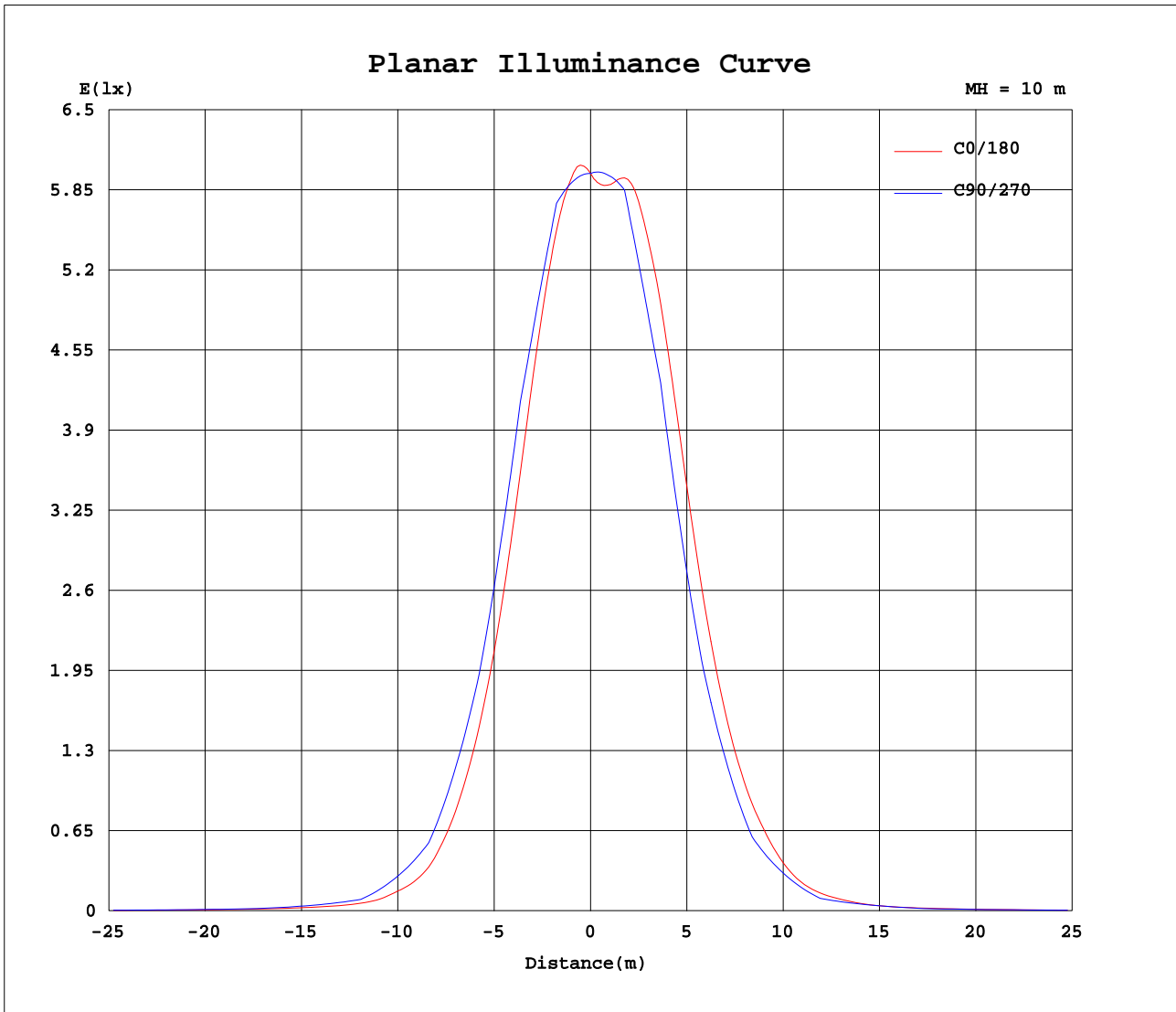
AvgL	cd/m2
L_0~180(65)av	14942
L_0~180(75)av	9636
L_0~180(85)av	3766
L_90~270(65)av	16067
L_90~270(75)av	10873
L_90~270(85)av	0
L_45(65)av	15260
L_45(75)av	10496
L_45(85)av	2977

Standard: GB/T 29293-2012

H(β) Range:-90 - 90DEG
H(β) Interval: 1.0DEG
Test Speed: HIGH
Temperature:25DEG
Operators:
Test Date:2019-10-10

V(B) Range:-80 - 80DEG
V(B) Interval: 5.0DEG
Test System:EVERFINE GO-2000A_V1 SYSTEM V2.0.402
Humidity:65.0%
Test Distance:6.880m [K=1.0000]
Remarks:

Planar Illuminance Curve



H(β) Range:-90 - 90DEG
 H(β) Interval: 1.0DEG
 Test Speed: HIGH
 Temperature:25DEG
 Operators:
 Test Date:2019-10-10

V(B) Range:-80 - 80DEG
 V(B) Interval: 5.0DEG
 Test System:EVERFINE GO-2000A_V1 SYSTEM V2.0.402
 Humidity:65.0%
 Test Distance:6.880m [K=1.0000]
 Remarks:

LUMINOUS DISTRIBUTION INTENSITY DATA

Test:U:220.07V I:0.0367A P:7.7634W PF:0.9601 Freq:50.01Hz Lamp Flux:634.405x1 lm		
NAME: EDL110-1 WW WH	TYPE:	WEIGHT:
SPEC.:10W	DIM.:	SERIAL No.:
MFR.: OBALS	SUR.:47mm	Shielding Angle:

Table--1

UNIT: cd

C(DEG) γ (DEG)	0	5	10	15	20	25	30	35	40	45	50	55	60	65	70	75	80	85	90
0	598	598	598	598	598	598	598	598	598	598	598	598	598	598	598	598	598	598	598
5	606	605	604	604	603	603	603	603	602	602	601	601	601	600	600	600	600	599	599
10	578	577	576	576	576	577	578	578	578	579	580	582	584	586	589	593	595	598	601
15	518	518	518	521	523	522	522	524	527	528	529	530	533	535	538	542	545	549	553
20	429	430	435	439	436	436	439	441	445	449	451	452	455	461	467	475	482	490	498
25	326	330	338	335	332	334	341	350	347	347	348	355	363	370	377	383	388	394	400
30	231	236	241	236	237	245	247	244	244	253	262	268	269	271	275	279	283	289	296
35	147	155	155	150	158	160	156	161	169	172	172	173	179	185	190	196	201	207	212
40	79.4	87.1	83.9	85.5	90.3	84.3	92.1	98.4	94.6	95.1	105	112	113	112	112	113	115	119	123
45	45.4	49.5	46.0	49.8	47.7	49.0	52.1	49.6	52.6	57.4	59.4	55.9	55.8	60.1	64.7	69.6	73.4	77.2	79.9
50	23.4	25.4	24.5	25.5	25.1	27.4	25.4	30.0	29.4	26.0	30.8	34.5	35.1	35.0	34.7	34.1	33.7	33.9	35.0
55	16.1	16.7	16.9	16.3	17.1	16.7	17.7	17.2	17.5	18.9	19.6	18.9	18.3	19.3	20.4	21.7	22.9	24.1	25.0
60	11.6	11.8	12.1	12.3	11.9	12.5	12.1	12.9	12.7	12.7	13.6	14.0	14.0	14.0	14.2	14.3	14.4	14.5	14.6
65	9.20	9.27	9.24	9.38	9.57	9.46	9.62	9.54	9.72	9.99	10.2	10.1	10.1	10.2	10.5	10.8	11.1	11.3	11.5
70	6.13	6.60	6.73	6.73	6.61	6.59	6.73	6.73	6.87	6.80	6.93	7.11	7.30	7.54	7.77	7.95	8.07	8.17	8.26
75	1.70	2.03	2.15	2.44	2.37	2.50	2.73	3.37	2.92	2.74	3.29	4.05	4.41	4.62	4.69	4.71	4.73	4.75	4.79
80	0.77	0.87	0.89	0.90	0.88	0.91	0.90	0.98	1.03	1.29	1.55	1.67	1.64	1.55	1.45	1.37	1.31	1.28	1.30
85	0.19	0.27	0.26	0.25	0.30	0.31	0.32	0.30	0.28	0.25	0.21	0.18	0.14	0.10	0.07	0.04	0.02	0.00	0.00
90	0.12	0.00	0.00	0.00	0.00	0.00	0.00	0.00	0.00	0.00	0.00	0.00	0.00	0.00	0.00	0.00	0.00	0.00	0.00

H(β) Range:-90 - 90DEG
H(β) Interval: 1.0DEG
Test Speed: HIGH
Temperature:25DEG
Operators:
Test Date:2019-10-10

V(B) Range:-80 - 80DEG
V(B) Interval: 5.0DEG
Test System:EVERFINE GO-2000A_V1 SYSTEM V2.0.402
Humidity:65.0%
Test Distance:6.880m [K=1.0000]
Remarks:

LUMINOUS DISTRIBUTION INTENSITY DATA

Test:U:220.07V I:0.0367A P:7.7634W PF:0.9601 Freq:50.01Hz Lamp Flux:634.405x1 lm		
NAME: EDL110-1 WW WH	TYPE:	WEIGHT:
SPEC.:10W	DIM.:	SERIAL No.:
MFR.: OBALS	SUR.:47mm	Shielding Angle:

Table--4

UNIT: cd

C(DEG) γ (DEG)	285	290	295	300	305	310	315	320	325	330	335	340	345	350	355				
0	598	598	598	598	598	598	598	598	598	598	598	598	598	598	598				
5	606	606	606	606	606	606	606	606	606	606	606	605	605	605	606				
10	604	601	598	595	593	591	588	587	586	585	583	581	579	578	578				
15	557	553	550	548	545	542	540	538	533	530	529	529	525	521	519				
20	493	485	478	472	468	465	462	455	449	445	442	441	443	437	431				
25	400	393	386	377	369	360	356	355	357	348	340	336	338	340	331				
30	293	288	284	280	277	270	260	251	250	252	248	240	238	243	237				
35	207	200	193	185	178	176	176	173	164	158	162	160	151	155	155				
40	120	118	116	117	114	107	96.1	95.3	99.0	92.8	84.2	90.5	85.7	83.9	87.2				
45	73.5	67.4	61.8	56.6	56.4	60.0	58.1	52.3	49.2	51.9	48.7	47.3	49.6	46.0	49.4				
50	35.7	35.8	35.9	35.6	34.8	31.4	26.4	29.5	30.2	25.5	27.5	25.1	25.6	24.5	25.4				
55	22.5	21.1	19.7	18.6	18.9	19.7	19.1	17.7	17.3	17.9	16.8	17.2	16.3	16.9	16.7				
60	14.9	14.8	14.5	14.3	14.2	13.7	12.9	12.9	13.1	12.2	12.6	11.9	12.3	12.2	11.9				
65	11.4	11.1	10.7	10.4	10.3	10.4	10.3	10.0	9.80	9.81	9.57	9.63	9.44	9.34	9.35				
70	8.53	8.35	8.05	7.79	7.57	7.42	7.27	7.32	7.12	7.03	6.80	6.79	6.84	6.81	6.65				
75	5.24	5.22	5.11	4.97	4.63	3.94	3.22	3.33	3.79	3.18	2.81	2.68	2.65	2.27	2.08				
80	1.83	1.93	2.03	2.12	2.17	2.07	1.76	1.46	1.40	1.33	1.31	1.23	1.17	1.03	0.90				
85	0.06	0.10	0.15	0.21	0.28	0.36	0.44	0.54	0.66	0.79	0.78	0.76	0.69	0.62	0.42				
90	0.00	0.00	0.00	0.00	0.00	0.00	0.00	0.00	0.00	0.00	0.00	0.00	0.00	0.00	0.00				

H(β) Range:-90 - 90DEG
H(β) Interval: 1.0DEG
Test Speed: HIGH
Temperature:25DEG
Operators:
Test Date:2019-10-10

V(B) Range:-80 - 80DEG
V(B) Interval: 5.0DEG
Test System:EVERFINE GO-2000A_V1 SYSTEM V2.0.402
Humidity:65.0%
Test Distance:6.880m [K=1.0000]
Remarks: