

# 15.6 Inch Portable Monitor Touchscreen 1080P User Manual



In order to ensure your safe use of this product, please read this manual carefully before using this product and keep it properly.



Please read the user manual in the product packaging carefully before using the device. This product has been designed with personal considerations in mind, but incorrect use may cause electric shock and fire. To avoid damaging the safety parts inside the machine, please observe the following rules during the installation, use and repairing:

1. To prevent from fire disaster or electronic shock, please do not put the monitor in humidity or even in a worse condition;
2. Before using the device, make sure all cables are connected properly and the power cord is not damaged, if there is any damage, please contact us immediately;
3. To avoid dust, moisture and extreme temperatures, please Don't place the device in any Damp area. Please place the device on a stable surface when in use;
4. Don't put any object or splash any liquid into the openings of the device casing;
5. Please use the power cord provided with the machine, and if you use other power cord, which is not provided by the Seller, or the power cord with the device is damaged, please contact our professional After-Service Team immediately, we will provide you the best solution in 12 hours;

This Tip is very Important when you use the Monitor;

6. Please use a Adapter to supply power for the display. The Mobile Phone Charger and Power Bank that meet power supply demand can also supply power for the display. If you are not sure the power supply types, please contact our professional After-Service Team immediately, we will provide you the best solution in 12 hours;
7. Do not attempt to open the rear case of the device. There are no spare parts in the device that the customers can use to repair. If any abnormality occurs, please contact our professional After-Service Team immediately , we will provide you the best solution in 12 hours;

To avoid Personal injury, please observe the following rules:

1. Do not place the monitor on a sloping table unless there are security measures;
2. Do not drop or throw objects or toys onto the screen, because it will result in personal injury, product and the screen damage;

To prevent other injuries, please observe the following rules:

1. Please turn off the monitor when you leave for a long time please;
2. Do not allow Children to throw or insert objects into the monitor;
3. Do not install spare parts that are not specifically designed for this device;
4. Please Unplug the power cord when the device is unattended for a long time.
5. Do not touch the power cord or signal cable when lightning strikes, otherwise it may cause electric shock;
6. Do not let any object compress or wrap the power cord;
7. Do not place the monitor where the power cord can be easily damaged.

To prevent the machine damage, the following situations should be avoided:

1. Place the monitor where it is easy to fall;
2. Place the display near a radiator or heat source;

Do not rub the screen with a hard object as it will scratch or permanently damage the screen.

Do not use your fingers to press the screen for a long time, otherwise it will produce screen smear, and even a screen damage.

Red, green, and blue pixel defects may appear on the screen, but it does not affect the display function.

The power cord is the main isolation device and must be put in an Easy-to-operate place.

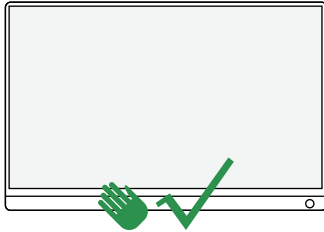
If possible, try to use the recommended resolution for best results. Because if you use other resolution other than the recommended resolution, a screen abnormality may occur. But this is a feature of a LCD panel with the fixed resolution.

A still picture on the screen for a long time will cause damage to the screen and produce afterimages. Please make sure to use the screen saver, the afterimage and related issues are not covered in the scope of product repairing warranty.

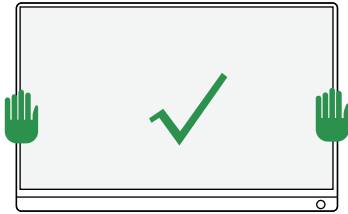
If you encounter any technical problems while using this device, please contact our professional After-Service Team immediately on [Page 17](#), we will provide you the best solution in 12 Hours.

# HOLD WAY

Slim Monitor Design, please Take Care when Holding.



Hold the Bottom part of the monitor.

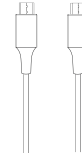


Hold both sides of the monitor screen.

The following is the Error Holding method:

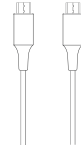


# Function of main accessories



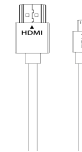
Type-c to Type-c Cable

for power and signal transmission



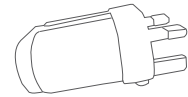
Type-c to USB3.0 Cable

for Touch



MINI HDMI Cable

for signal transmission



45W PD Adapter

for power

If there are any missing parts, please contact us and we will resend to you soon.



## Interface function introduction



### A Speakers

Listen to music, movies, games, and multimedia file

### B Micro USB Port

OTG interface . Support extended connection of mouse and keyboard. (It can be used when connecting to Type-C devices, not available when connecting to HDMI devices).

### C Mini HDMI Port

Audio and video signal transmission.

### D Type-C Port

Video signal transmission.

### E Volume +/- Button

The volume can be adjusted by this button. Long press the volume + to select whether the display charges the phone.

### F Brightness +/- Button

The brightness level can be adjusted by this button. Long press brightness + enter OSD menu. Long press brightness- enter input menu option.

### G Charge Port

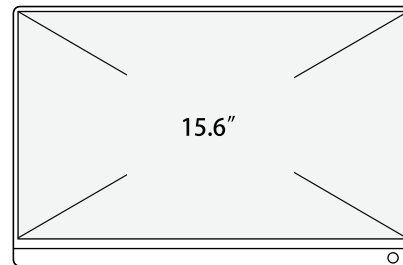
Plug in the USB C cable to power the monitor

### H Power / Power Indicator Light

Long press this button to turn on or off the monitor. The blue light will be on at startup, the red light will flash during charging, and the red light will always be on when charging is completed.



## Product Parameters



Front

The display supports horizontal and vertical rotation, and you need to set it in your computer device: Extended mode - vertical rotation 90 degrees / 270 degrees.

Model	M156G16
Panel Type	IPS Screen
Screen Size	15.6 inch
Aspect Ratio	16:9
Resolution	1920*1080
Visual Angle	178°
Contrast Ratio	1200:1
Brightness	250 cd/m <sup>2</sup>
Built-in Speakers	2*8Ω1W
Input Interface	USBOTG - Mini HD (Signal Transmission) - Type C full function (Power or Signal Transmission from Thunderbolt3 PC or USB3.1 Phone)
Battery Capacity	10800 mAh/7.4v
Refresh Rate	120Hz



# OSD Menu introduction

## 1. Picture



In the 'Picture' setting, you can choose 'Backlight', 'Brightness', 'Contrast', 'Sharpness'.

## 2. Display



In the 'Display' setting, you can choose 'V', '180'.

## 7. Other



In the 'Other' setting, you can choose 'Reset', 'Language', 'Rotate'.

## 8. SelfishMode



In the 'SelfishMode' setting, you can choose 'NO', 'OFF'.

## 3. Color



In the 'Color' setting, you can choose 'PanelUniformity', 'Gamma', 'Temperature', 'ColorEffect'.

## 4. Advanced

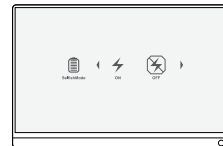


In the 'Advanced' setting, you can choose 'AspectRatio', 'OverDrive', 'DDCCF', 'UltraHDR'.

## 9. Information



In the 'Information' setting, you can get the monitor's default information.



Long press the upper part of the volume key 3 seconds.  
Determine whether to charge the USB C mobile phone by selecting turn ON/OFF in the SelfishMode.

## 5. Input



In the 'Input' setting, you can choose 'AutoSelect', 'D0-Type-C', 'D1-HDMI'.

## 6. Audio



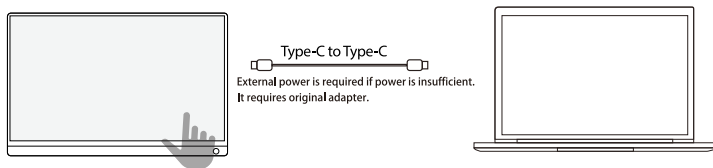
In the 'Input' setting, you can choose 'AutoSelect', 'D0-Type-C', 'D1-HDMI'.



Long press the upper part of the brightness key 3 seconds.  
In the 'Input' setting, you can choose 'AutoSelect', 'D0-Type-C', 'D1-HDMI'.

## Function introduction

### 1. Connect to computer with Type-C interface which supports Thunderbolt3 interface



#### PC which supports Thunderbolts 3:

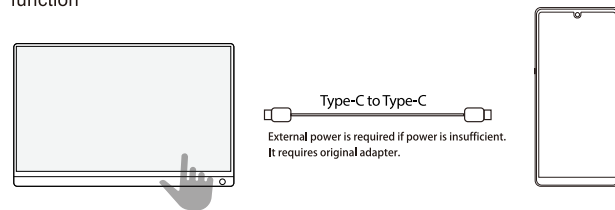
Macbook 12"、Macbook 13" 2017、MacbookPro 2016/2017/2018、New Macbook Air 2018、iPad Pro 2018 ChromeBook  
Pixel5、PielBook Pen、MagicBook、YogoC930、Yogo 5 Pro、Yogo 6 Pro、ThinkPad X1 Carbon2017、Miix 720、Legion  
Y7000/Y7000P/Y7000K、XPS13、XPS15、G3/G5/G7、Inspiron 5000/7000、Pavilion X2、EliteBook Folio G1、EliteBook  
1050、G1 Microsoft Surface Book2、Matebook D、Matebook X、Matebook X Pro、Matebook E、Matebook 13  
Continuous update...

**Note:** Please check the Type C port of your PC/Laptop whether supports audio and video signal transmission(Thunderbolt3). If it is just a Type C for charging, you need a adapter "Type C to Mini HDMI" for signal transmission. You can also contact us by email on [Page 17](#) for the adapter. We will reply to you within 12 hours.

- 1. External power is required if power is insufficient, it requires original adapter.
- 2. Please use original cable and original adapter.
- 3. When "No signal" or "Power saving mode" appears, please change the type-c cable head to another side and connect to monitor again.

## Function introduction

### 2. Connect mobile phone supporting USB3.1 Protocol with Type-C output function



#### Mobile Phone which supports USB 3.1:

S8、S8+、S9、S9+、S10、S10+、S10e、Note8、Note9、Mate10、Mate10 Pro、Mate20、Mate20 Pro、Mate 20X、  
Mate P20、Mate P20 Pro、HonorNot10、Mate P30、Mate P30 Pro、  
Continuous update...

**Note:** Please check the Type C port of your Mobile Phone whether supports audio and video signal transmission(USB 3.1). If NOT SUPPORTS, it is just a Type C for charging, You need a adapter "I-O-S/Android to HDTV cable" for signal transmission.

You can also contact us by email on [Page 17](#) for the adapter. We will reply to you within 12 hours.

- 1. External power is required if power is insufficient, it requires original adapter.
- 2. Please use original cable and original adapter.
- 3. When "No signal" or "Power saving mode" appears, please change the type-c cable head to another side and connect to monitor again.

## Function introduction

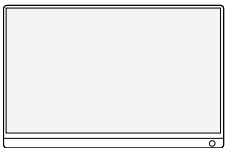
### 3. Latest Nintendo Switch



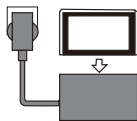
External power is required if power is insufficient.  
It requires original adapter.



### Traditional Nintendo Switch



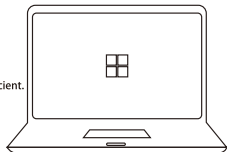
External power is required if power is insufficient.  
It requires original adapter.



### 4. Connect to more HDMI devices, like PC (doesn't support Thunderbolt3)



External power is required if power is insufficient.  
It requires original adapter.

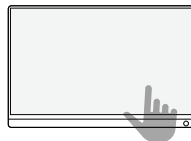


The monitor has a Mini HDMI interface and is compatible with most HDMI devices. If the monitor's battery is not enough to work, when connecting a computer to HDMI interface, you need to power the monitor firstly, then use the HDMI to Mini HDMI cable to connect to transfer signal. (Some computer USB ports may suffer from a power shortage and require an external power supply).

- Note:
1. External power is required if battery power is insufficient, it requires original adapter.
  2. When connecting to HDMI device, you need to power the monitor firstly, and then connect the HDMI to Mini HDMI cable.

## Function introduction

### Micro Host



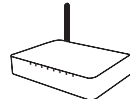
Type-C to USB 3.0 (For Touch)



Mini HDMI to HDMI (Video/Audio signal)



External power is required if power is insufficient.  
It requires original adapter.



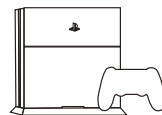
### PS4



Mini HDMI to HDMI (Video/Audio signal)



External power is required if power is insufficient.  
It requires original adapter.



### Xbox



Mini HDMI to HDMI (Video/Audio signal)



External power is required if power is insufficient.  
It requires original adapter.



### Operation Notes:

1. Please confirm whether the battery of the monitor has enough power before use. If there is no enough power, you can connect it as follows, If there is no enough power, you can connect the monitor to device after charging. Or, you can use the original adapter to power the monitor when signal connection.
2. Please operate the display by using the original accessories in the package.
3. When a HDMI cable is connected, please connect the power supply firstly, and then connect HDMI to Mini HDMI cable to ensure the signal transmitted smoothly.
4. When the single-line connection to the signal interface, the screen will flash, and under voltage will result in Black screen, so please make sure to connect the original power supply.

## FAQ and Solution

### Q: No touch

1. For mobile phone, there are two cases.

① There is no touch when connecting to a mobile phone supporting USB3.1. Please contact us to upgrade the display program. This is rare.

② There is correct and usual case that the monitor can't touch when phone doesn't support USB3.1.

Please check the phone model to ensure if the phone support USB3.1.

2. For game devices (Nintendo, XBOX, PS4, etc.), the monitor can't touch.

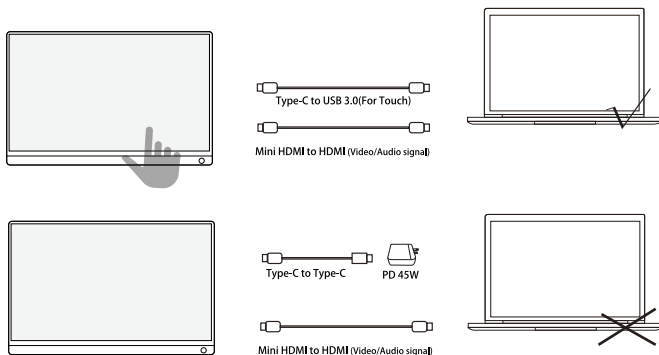
3. For computer equipment / micro-host. In this case, you need to check whether the connection method is correct. Please use the original cable provided.

Most of the cases that the monitor cannot touch are caused by the wrong connection method.

The following picture is an example.

The left picture is the correct connection method, and the right picture is the wrong connection method.

Please refer to the picture.



**Note:** The touch cable must be connected to the computer host instead of a power outlet.

4. If the connection method is correct and you still can't touch it, please try another computer device.

If it doesn't work with other computer devices still. Please connect us to replace the new touch cable for free to solve the problem.

## FAQ and Solution

### Q: What is the use of the Micro USB port on the display? Can it be powered?

No it can not power !!!

Micro usb is only for external mouse and keyboard, you need to buy OTG cable to use, if you need, you can tell us and we will send it to you.

### Q: Can iphone and ipad be directly connected to the display?

No, you need to purchase and use "I-O-S / Android to HDTV" cable, if you need, please tell us and we can send it to you.

### Q: My phone is a Google brand, but I cannot connect it directly to the display?

Some Google phones cannot be connected directly to the display.

The mobile phone interface needs to support USB3.1 in order to connect directly to the display.

Please confirm if your mobile phone supports it. If not, you need to purchase the "IOS / Android to HDTV" cable. If you need, you can tell us and we will send it to you.

### Q: Can the "I-O-S / Android to HDTV" cable can make any mobile phones work with monitor?

Yes, the "I-O-S / Android to HDTV" cable allows any cell phones to be used with a display.

### Q: What if my computer only has a Mini dp interface?

You need to buy "mini dp to Mini HDMI" cable to connect to transmit signal. If you need, you can tell us and we will send it to you.

### Q: My computer only has USB 2.0 and USB 3.0 ports. How can I use it with a monitor?

You need to buy a "USB to Mini HDMI" cable, if you don't know how to choose appropriate one, you can tell us and we will recommend the right one for you.

### Q: My camera and monitor are used together, but there is no display. What can I do?

① Not all cameras can be directly connected to the monitor, it is determined by the camera model.

② Please tell us your camera model and interface, we will help you solve it within 12 hours.



## FAQ and Solution

**Q: My computer and monitor are connected with a type c to type c cable, showing "No Signal" or "Power Saving Mode", how can I solve it?**

- ① The computer interface needs to support Thunderbolt 3. Please confirm whether your computer supports Thunderbolt 3. If your computer does not support Thunderbolt 3, you need to purchase and use a "type c to Mini HDMI" adapter. If you need it, you can tell us and we will send it to you.
- ② Please check whether the connection method is wrong. Please pay special attention to that the POWER port.

**Q: The monitor flickers and keeps switching on and off. How to solve it?**

- ① This phenomenon is insufficient power supply to the monitor. Please connect an external monitor power supply to solve this problem.
- ② The above operations still can not solve the problem, please tell us, we will give you the perfect solution within 12 hours.

**Q: How to solve the abnormal display of the monitor?**

This phenomenon may be caused by interference from other devices, or it may be a problem with your device

- ① If there is interference from other devices, you can temporarily remove it.
- ② If you have other computer equipment at home, you can try to connect with another device.
- ③ If the situation is still the same, please tell us, we will give you the perfect solution within 12 hours.

**Q: Why doesn't the display show?**

Please check if the monitor power supply is properly connected (or if the battery is charged).

**Q: Why does the display show no image and only the boot LOGO appears?**

Please check whether the signal data cable of the device is properly connected, and whether the HDMI or Type-C cable is properly connected to the device to ensure that the device is operating normally.

**Q: No image display when Type-C mobile phone is connected?**

Answer: Method 1: Please confirm whether your mobile phone model is within the support range; Check whether the power supply or Type-C cable is properly connected. (Recommended to use original accessories)

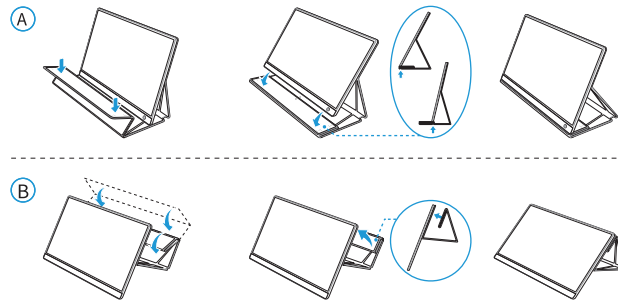
Method 2: Turn on the monitor, long press the top volume plus key on the right side of the monitor, the picture A will appear, continue to short press the volume plus key to switch ON (power supply mode) or OFF (turn off the power supply mode), most mobile phones directly Even if the display selects the ON mode, very few mobile phones directly connect to the display to select the OFF mode. Switch game consoles need to select ON mode to display normally.



**Q: Why is there no sound from the monitor?**

Please check whether the monitor is set to mute or the volume is 0, and then see the sound setting options on the connected device, whether the sound is turned on.

Monitor stand position  
In the case of using a multi-function stand holster, this display has a variety of side-up positions.



In order to ensure the most stable using effect, please use the original accessories for connection and use.

If you have any other questions, please let us know. Your question is very important to us. We will give you the perfect solution within 12 hours, and your questions can help us to perfect every detail. Will help us do better and better, thank you very much!

 **Warranty Card**

**Dear Customer,**

Thank you for purchasing from us!

We offer 100% money back guarantee in 30 days and replacement in 90 days, lifetime warranty for any issue, professional tech support to ensure no-worry service.

Any query or problem, please contact us :

**UK:** [support@uperfectmonitor.com](mailto:support@uperfectmonitor.com)

**We will reply to you within 12 hours.**

