

15.6 Inch Wireless Monitor User Manual



Email: help@uperfectmonitor.com



In order to ensure your safe use of this product, please read this manual carefully before using this product and keep it property.



Email: help@uperfectmonitor.com

Table of contents

Chapter 01 Preparations

Checking the package contents

Monitor introduction

Product Appearance & Interface Function Introduction

Chapter 02 Specifications

Chapter 03 OSD Menu introduction

Chapter 04 Connecting

TYPE-C signal transfer

Supported Devices & Models (Type-C)

HDMI signal transfer

Chapter 05 Setting Up(Windows10)

1.Extend Mode /Duplicate Mode/Display Mode

1-1.Way1: Set on the device'Display Settings

1-2.Way2: Set via Windows key + P keyboard shortcut

2.Rotate the Screen

Chapter 06 Q&A

Chapter 07 Service Support

Chapter 01 Preparations

Checking the Package Contents



1*Wireless Monitor



1*30W PD Adapter



1*Transmitter



1*mini HDMI to HDMI



2*Type-c to Type-c Cable



1*Type-a to Type-c Cable

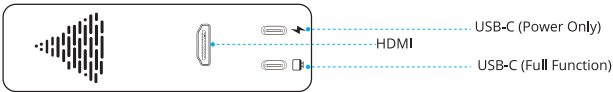
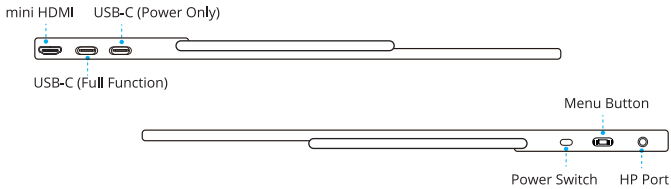


1*User Manual

Note:

- If any of the above items is damaged or missing, please contact us immediately. (help@uperfectmonitor.com)
- The appearance of the components may differ from the images shown.

Monitor Introduction



Product Appearance & Interface Function Introduction

USB-C (Power Only)

Only for the power supply (if your device is low on power, please connect it to an external power supply)

USB-C (Full Function)

For both power supply and signal transmission (if your device is low on power, please connect it to an external power supply)

Standard HDMI & mini HDMI

For signal transmission only

3.5mm Audio Port

Suitable for earphone

Menu Button (Pully Button)

Press/scroll up /down the button to open the On-Screen Display (OSD) menu.

Use the scroll button up and down the menu to control the cursor and press the scroll button to confirm.

Power Button

- ① Press and hold for more than 1 second to turn on
- ② Press for 2-3 seconds to turn off
- ③ Short press to enter the signal input option / return to the previous menu page.

Chapter 02 Specifications

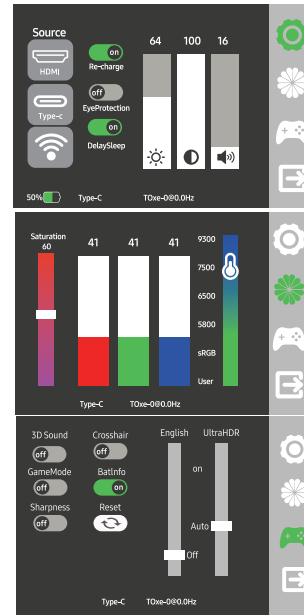
Color	Black
Screen size	15.6 Inch
Resolution	1920*1080
Panel type	IPS (Full viewing angle)
Color gamut	72% sRGB
Average brightness	250 cd/m ²
Machine interface	USB-C (Power Only)/USB-C (Full Function)/mini HDMI/HP Port
Machine size	356×226×5.5 mm (14.02×8.9×0.22 inch)
Machine net weight	0.79 kg (1.74 lbs)
Transmitter interface	USB-C (Power Only)/USB-C (Full Function)/HDMI
Transmitter size	200 × 45 × 40 mm (7.87 × 1.77 × 1.57 inch)
Transmitter net weight	0.1 kg (0.22 lbs)

Chapter 03 OSD Menu Introduction

OSD Menu Introduction:

How to active On-Screen Display Menu?

Press the button to open the On-Screen Display (OSD) menu.



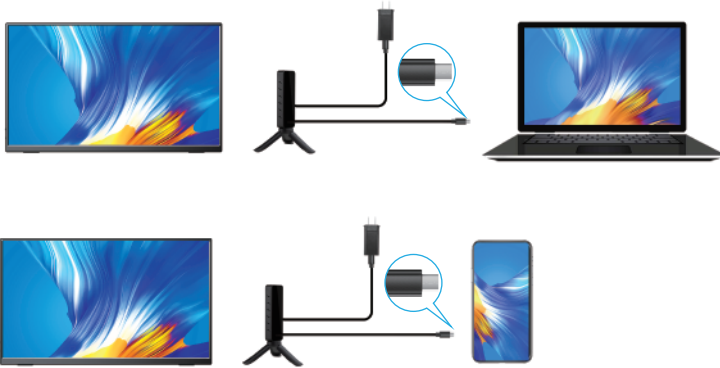
In the First setting, you can choose 'Source', 'Eye Protection', 'Delay Sleep', 'Brightness', 'Contrast', 'Volume'.

In the Second setting, Adjust the Saturation, Color Temperature, and R G B to suit the display screen. You can switch to the appropriate color.

In the Third setting, you can choose Language, Ultra HDR, 3D Sound, Game Mode, Sharpness, Crosshair, BatInfo, Reset.

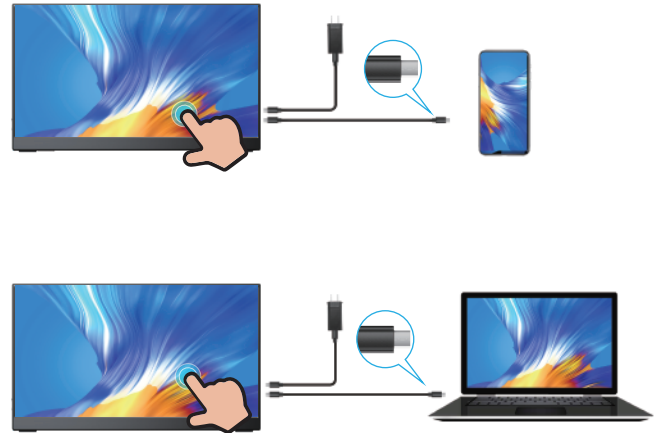
Chapter 04 Connecting

Type C signal transmission via transmitter, when use "type-c to type-c" cable for signal transmission and power, your device must support Thunderbolt 3 or USB 3.1.



Note: When connecting via type-c of the transmitter, if your device is fully charged, no need to connect the power; if your device is in low power, transmission will be unstable, and the transmitter needs to be connected to the power supply.

Type C signal transmission via display, when use "type-c to type-c" cable for signal transmission and power, your device must support Thunderbolt 3 or USB 3.1.



Note: Wireless monitor has built-in battery, when the monitor is in low power, transmission will be unstable, the monitor needs to be connected to the power supply.

Supported Devices & Models (Type-C)

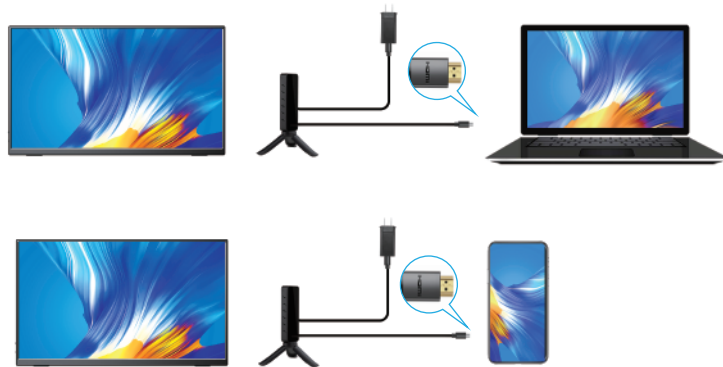
Laptop Model	
Brand	Model
Apple	Macbook 12", Macbook 13" 2017, MacbookPro 2016/2017/2018, New Macbook Air 2018, iPad Pro 2018
Google	ChromeBook Pixels, PixelBook Pen, MagicBook
Lenovo	YogaC930, Yoga 5 Pro, Yoga 6 Pro, ThinkPad XI Carbon2017, Miix 720, Legion Y7000/Y7000P/Y7000K
Dell	XPS13, XPS15, G3/G5/G7, Inspiron 5000/7000
HP	Pavilion X2, EliteBook Folio G1, EliteBook 1050 G1, Microsoft Surface Book2
ASUS	U306, U321 series, U4100, ROG series
Huawei	Matebook D, Matebook X, Matebook X Pro, Matebook E, Matebook13
Razer	Blade Stealth
More Brands	Continuous update...

Note: Please confirm whether the Type C port of your PC/Laptop supports audio and video signal transmission (Thunderbolt3). If it is a Type C port only for charging, you need to use the HDMI port to transfer signal.

Mobile Phone Model	
Brand	Model
Samsung	S8, S8+, S9, S9+, S10, S10+, S10e, Note8, Note9
Huawei	Mate10, Mate10 Pro, Mate20, Mate20 Pro, Mate 20X, Mate P20, Mate P20 Pro, HonorNot10, Mate P30, Mate P30 Pro
More Brands	Continuous update...

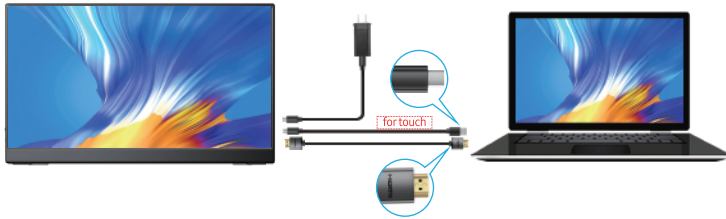
Note: Please confirm whether the Type C port of your phone supports audio and video signal transmission (USB 3.1).

HDMI signal transmission via transmitter



Note: When connecting via HDMI, the transmitter must connect to the power supply.

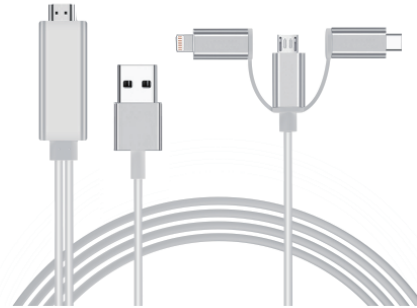
HDMI signal transmission via display



Note:

- ①Wireless monitor has built-in battery, when the monitor is in low power, transmission will be unstable, the monitor needs to be connected to the power supply.
- ②When transmitting via HDMI, you need to connect another U-C to get the touch function.

Note: If the Type C of your laptop/phone is not a full-featured Type C port, or your phone is with micro USB port, lightning port, for example Google Pixel 3, you need to buy the adapter as below. Any questions you can feel free to contact us.



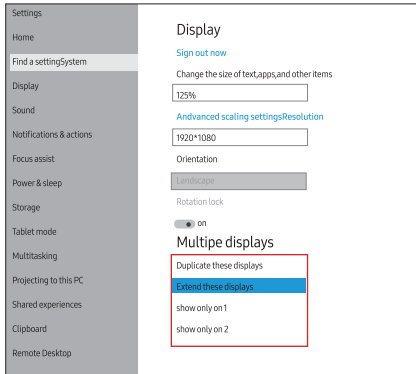
Chapter 05

Setting Up(Windows10)

Extend Mode /Duplicate Mode/Display Mode

Way1: Set on the device'Display Settings

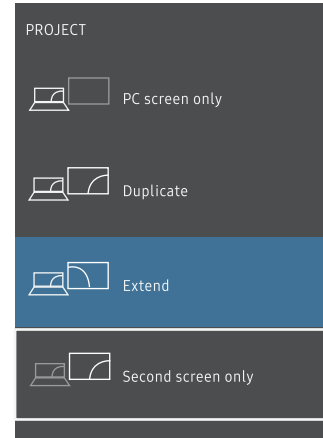
- A: Verify that your cables are connected properly to the new monitors.
- B: Right-click anywhere on your desktop and select Display settings to open the Display page.
- C: Scroll down to Multiple displays, then select an option from the drop-down list to determine how your desktop will display across your screens. For the largest work area, select Extend desktop.



Note: If you cannot see the additional monitor(s) listed, click Detect. If does not work, try restarting your computer and do steps again.

Way2: Set via Windows key + P keyboard shortcut

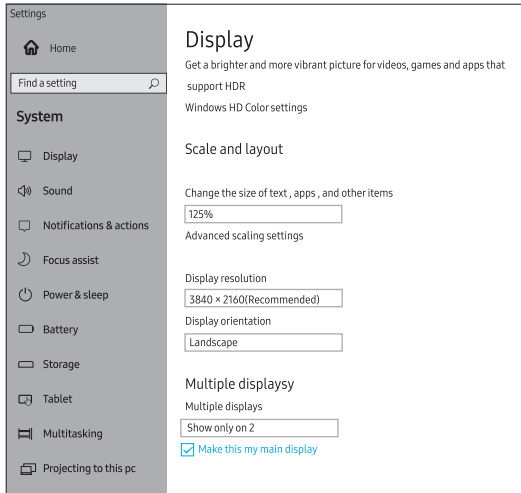
- A: Verify that your cables are connected properly to the new monitors.
- B: Enter the "Windows" key and "P" keyboard at the same time.
- C: select an option from the drop-down list to determine how your desktop will display across your screens. For the largest work area, select Extend desktop.



Note: If you cannot see the additional monitor(s) listed, click Detect. If does not work, try restarting your computer and do steps again.

Rotate the Screen

- 1: Verify that your cables are connected properly to the new monitors.
- 2: Right-click anywhere on your desktop and select Display settings to open the Display page.
- 3: Under the "Select and rearrange displays" section, select the monitor that you want to adjust.
- 4: Under the "Scale and layout" section, use the Orientation drop-down menu to select Landscape or Portrait screen.



Chapter 06

Q&A

Q: The monitor keeps switching and flicker, although it connected to outlet for extra power supply.

A: This situation is generally caused by insufficient voltage; Please check whether the factory-packed cables are used, and then check whether an external PD power supply is used. The power consumption of 4K monitor is relatively larger, and an external PD power supply is required.

Q: Can we supply energy from power bank without using self power adapter?

A: That depends on the output of the power bank, because this monitor requires at least 30W power supply.

And if the output of your power bank is only 20W , this power bank will not supply enough energy for the monitor.

The output of power adapter we provide is 45W, so a power bank with output above 45W is recommended.

Q: Is it possible to set the default contrast? I have to adjust each time from 10% to 70%, each time I connect to my Macbook Pro laptop.

A: How to save the settings of brightness, volume, etc.

·When the HDMI port is used for display and monitor powered by Type C port, all the settings will be saved automatically.

·But when the Type-C port is used for display without external power supply, brightness and volume will not be saved after the monitor is powered off, this design is to avoid that the monitor doesn't work when connected to phones which could not provide enough power for monitor with high brightness setting. So to avoid the brightness is reset everyday, please give the monitor an external power supply with Type C port and do not cut off the power.

Actually, all the portable monitors on Amazon all have this same design.

Q: The output resolution of the monitor is less than 4k 60hz, what is the reason?

A: 1. Check the display settings on the device and adjust the resolution to 4k;
2. Connect to another device and check if the output resolution is 4k;
3. If it still cannot be adjusted, please check whether the graphics card of the device supports 4K. If your graphics card does not support 4K, the output resolution of the monitor will also be lower than 4K;
4. If the above methods can not solve the problem, please contact us. Our professional team will give you a satisfactory answer within 12 hours.

Q: Gravity sensing is not available.

A: 1. Please go back to the menu bar of the monitor to open the corresponding angle of gravity sensing.
2. Refer to the instruction manual, we have written down in detail how to operate the gravity sensor, please follow the method.
3. The above cannot be resolved, please contact our professional customer service team, we will solve the problem for you within 6-12 hours.

Q: Touchscreen isn't responsive or not working.

A: 1. For mobile phones
① Touchscreen is not working when connecting to a mobile phone supporting USB3.1. Please contact us to upgrade the display program.
② Touchscreen isn't responsive or not working if the phone doesn't support USB3.1. Please check the phone model to ensure if it supports USB3.1.
2. For game devices (Nintendo, XBOX, PS4, etc.), the touch-function is unresponsive.
3. For Computer/Micro-host. Please check the connection. Please use the genuine cable provided. Incorrect connection may arouse touch-function unresponsive in most cases.
4. If the connection is correct and the touch-function is still unresponsive. Please try another computer. If it failed, please contact us for the replacement of the touch cable.

Chapter 07

Service Support

Dear Customer,
Thank you for purchasing the Portable USB Monitor!
We offer 100% money back guarantee in 30 days and 90 days warranty, 12 months warranty for any issue, professional tech support to ensure no-worry service.
Any query or problem, please contact us via help@uperfectmonitor.com

