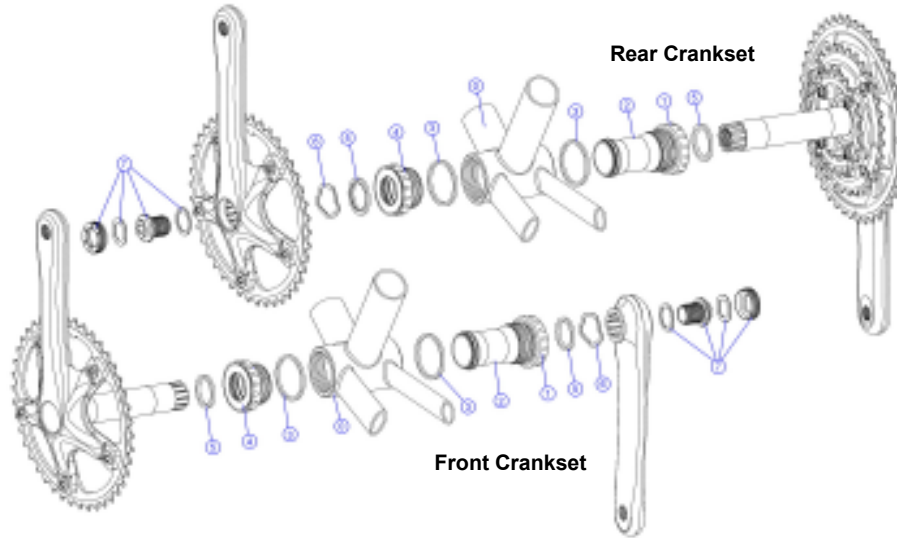


# Tandem Crank Service Instructions



## Service Instructions

Congratulations on your Full Speed Ahead Product. Please read these instructions and follow them for correct use. Since specific tools and experience are necessary for proper installation, it is recommended that the crankset be installed by a qualified bicycle technician. These instructions and instructions for other FSA products are available for download at [www.fullspeedahead.com](http://www.fullspeedahead.com)

## Specification

Item Number / Model Name **CK-8680-TD / SL-K Tandem (BB-7000/TD)**  
 Item Number / Model Name **CK-6020-TD / Gossamer Tandem (BB-7000/TD)**

## Components

Follow the assembly order in the illustration

- |                             |                                       |
|-----------------------------|---------------------------------------|
| ⑥ Bottom Bracket (BB) Shell | ⑥ Wave Spring Washer x1               |
| ① Right BB Cup x1           | ⑦ Self-extracting Crank Bolt Assembly |
| ② BB Inner Sleeve x1        | M27 Retaining Nut x1                  |
| ③ Alloy BB Cup Spacer x2    | Black Washer x1                       |
| ④ Left BB Cup x1            | M17 Crank Bolt x1                     |
| ⑤ Alloy Crank Spacer x2     | Silver washer x1                      |

## Contact

If you have questions, please visit our web site contact page at:  
<http://fullspeedahead.com/fly.aspx?layout=contact>  
 Full crankset instruction is available at [www.fullspeedahead.com](http://www.fullspeedahead.com)

## Warranty

Full Speed Ahead (FSA) warrants all FSA, Gravity, VisionTech, and RPM products to be free from defects in materials or workmanship for a period of two years after original purchase unless otherwise stated in the full warranty policy. The warranty is non-transferable and valid to the original purchaser of the product only. Full warranty policy is available at [www.fullspeedahead.com](http://www.fullspeedahead.com)

## Front Crankset Installation

1. Ensure that the front and rear BB shells ⑥ are faced square and clean and free of metal chips, dirt, and excess paint.
2. Install the Left BB cup ④, BB inner sleeve ②, and correct number of alloy BB cup spacers ③ (based on BB shell width). Tighten cup to a torque of 400-500 kgf.cm / 40-50 Nm / 354-443 in.lbs.

FSA Tandem cranksets are designed to accept 68mm and 73mm BB shells:

- 68mm BB shell requires one 2.5mm alloy cup spacer on each side of BB shell.
- 73mm BB shell does **not** require 2.5mm alloy cup spacers.

3. Install the Right BB cup ①. Tighten cup to to torque of 400-500 kgf.cm / 40-50 Nm / 354-443 in.lbs.
4. Gently and completely insert the left sync crank and spindle through correct number of alloy crank spacers ⑤. Take great care not to damage the plastic cover of right BB cup ①. It is recommended to lightly grease the plastic cover of BB cups.

FSA Tandem cranksets are designed to accommodate 3 different chainlines:

- 53mm chainline requires two alloy crank spacers between right crank arm and right BB cup.
- 50.5mm chainline requires one alloy crank spacer between each crank arm and BB cup.
- 48mm chainline requires two alloy crank spacers between left crank arm and left BB cup.

5. Install wave spring washer ⑥ on right side of spindle.

Chainline	Recommended Hub Width Usage	Crank Spacer Position Front	Crank Spacer Position Rear
53mm	145mm	2R	2R
50.5mm		1L 1R	1L 1R
48mm	135mm	2L	2L

**Note:** Make sure the wave spring washer ⑥ installed between crank and alloy crank spacer ⑤.

6. Install the right crank arm onto the spindle. Tighten the self-extracting crank bolt ⑦ to a torque of 450-550 kgf.cm / 45-55 Nm / 390-485 in.lbs.

#### Rear Crankset installation

1. Install the right BB cup ①, BB inner sleeve ②, and correct number of alloy BB cup spacers ③ (see *Front Crankset Installation*) Tighten cup to a torque of 400-500 kgf.cm / 40-50 Nm / 354-443 in.lbs..

2. Install the left BB cup ④. Tighten cup to a torque of 400-500 kgf.cm / 40-50 Nm / 354-443 in.lbs.

3. Gently and completely insert the right crank and spindle through correct alloy crank spacers ⑤. Take great care not to damage the plastic cover of left BB cup. It is recommended to lightly grease the plastic cover of BB cups.

4. Install correct alloy crank spacers ⑤ (see *Front Crankset Installation*) and wave spring washer ⑥ on left side of spindle.

**Note:** Make sure the wave spring washer ⑥ installed between crank and alloy crank spacer ⑤.

5. Install the left sync crank arm onto the spindle. Tighten the self-extracting crank bolt ⑦ to a torque of 450-550 kgf.cm / 45-55 Nm / 390-485 in.lbs.

**Note:** Rear crankset requires FSA Tandem Braze-On Front Derailleur Adapter

**Full Speed Ahead, USA**  
12810 NE 178th St. Suite 102  
Woodinville, WA 98072  
Tel: 1\_425\_488\_8653  
Fax: 1\_425\_489\_1089

**Full Speed Ahead, Europe**  
Via Del Lavoro, 56  
20040 Busnago, Milan, Italy  
Tel: +39\_039\_688\_5265  
Fax: +39\_039\_682\_3336

**TH INDUSTRIES / FSA Asia**  
487 Ko-Chung Rd. Ta-Li City 412  
Taichung County, Taiwan  
Tel: +886\_4\_2406\_8641  
Fax: +886\_4\_2406\_8076

