
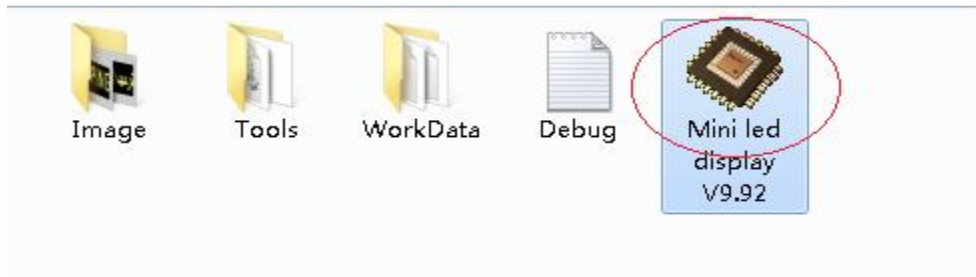


Mini LED Display User Manual

Step1: Insert the CD into CD drive, Copy the whole files to your computer, from your Computer to open it.

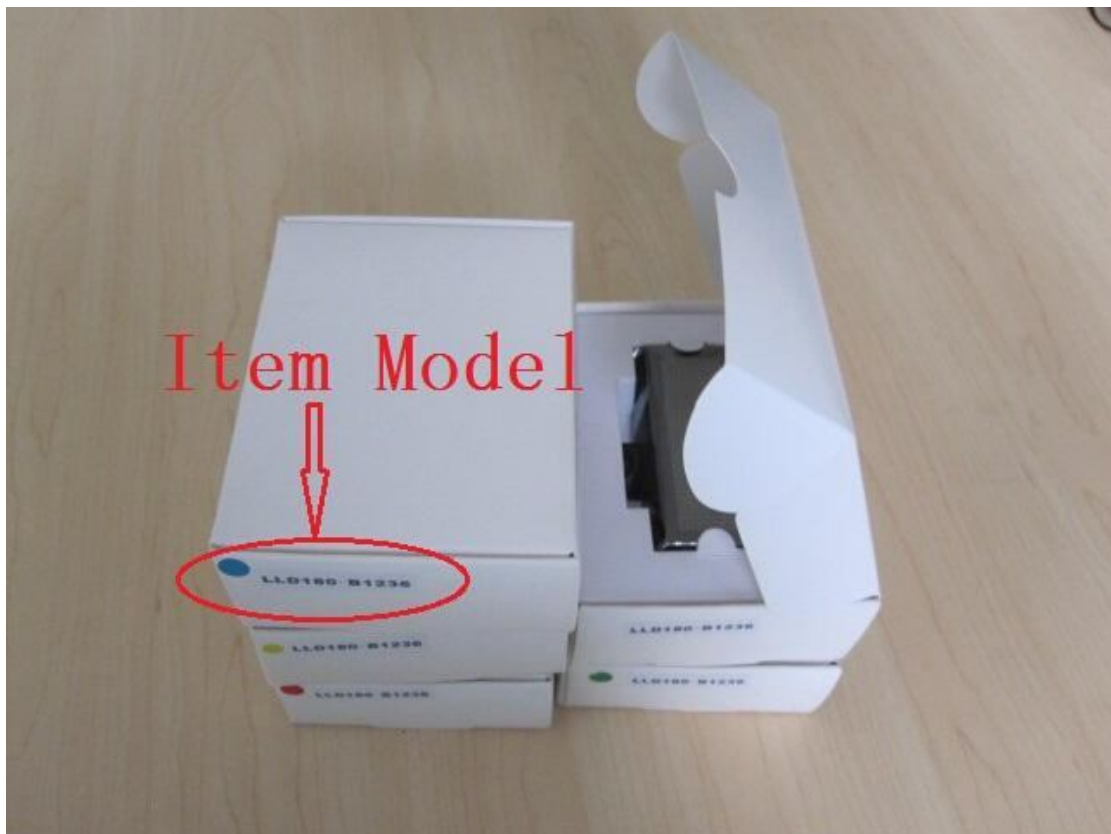
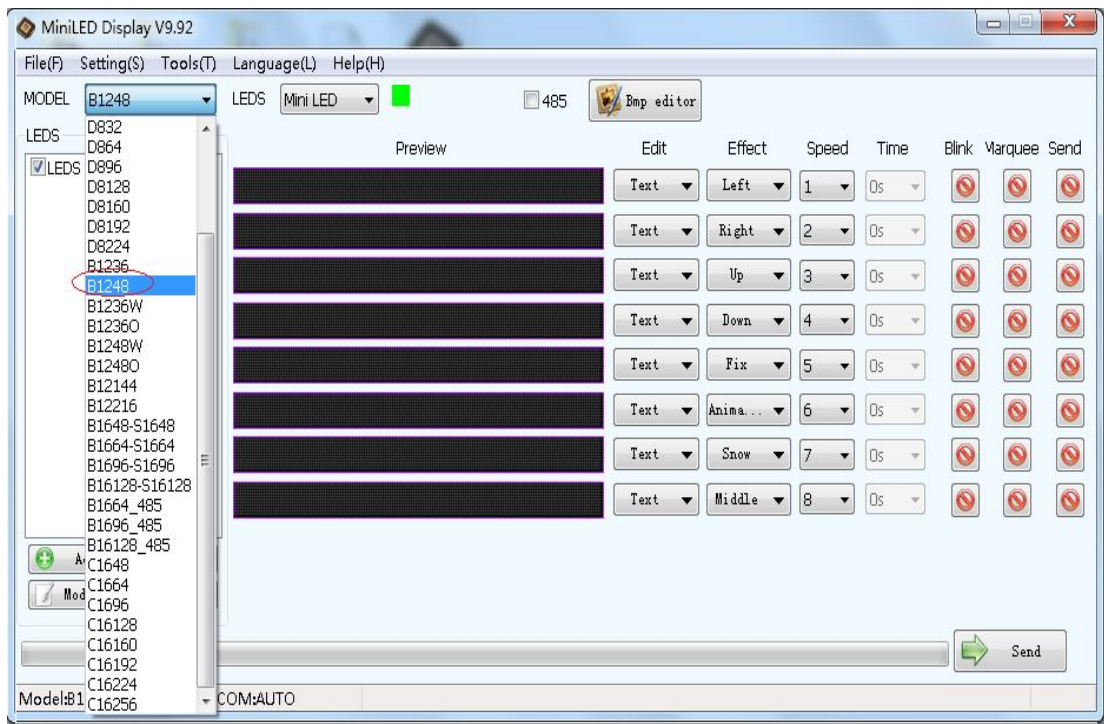
Step2: Bellow files will be found, please double-click the “Mini LED Display”, click

the “” direct to enter the edit interface:

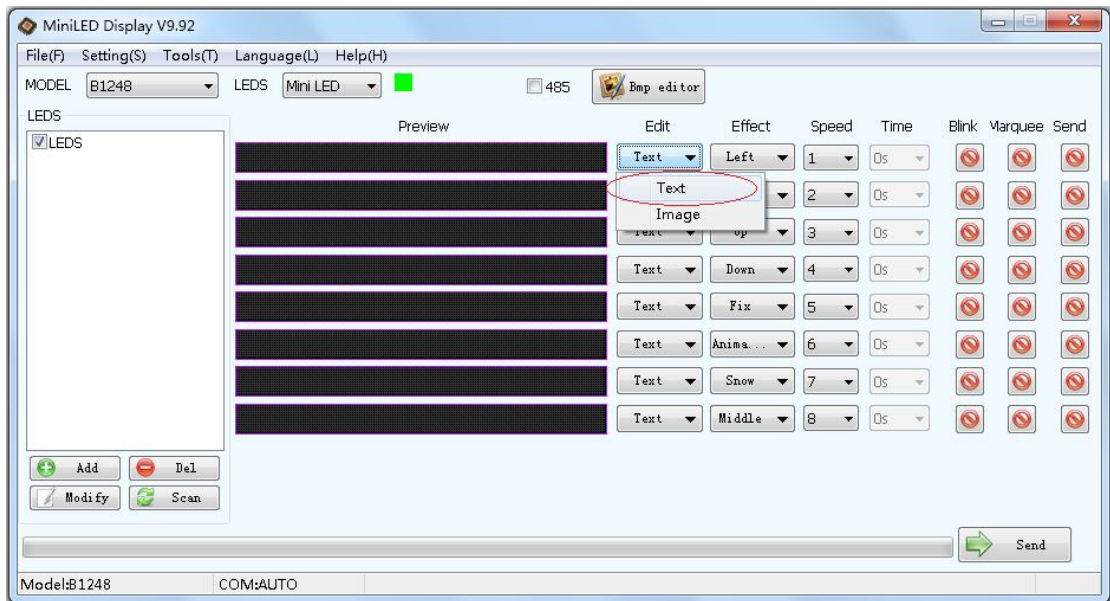


Step3: Please turn on the led display, connect USB cable, choose the “Model” (you can find the model number from box side)

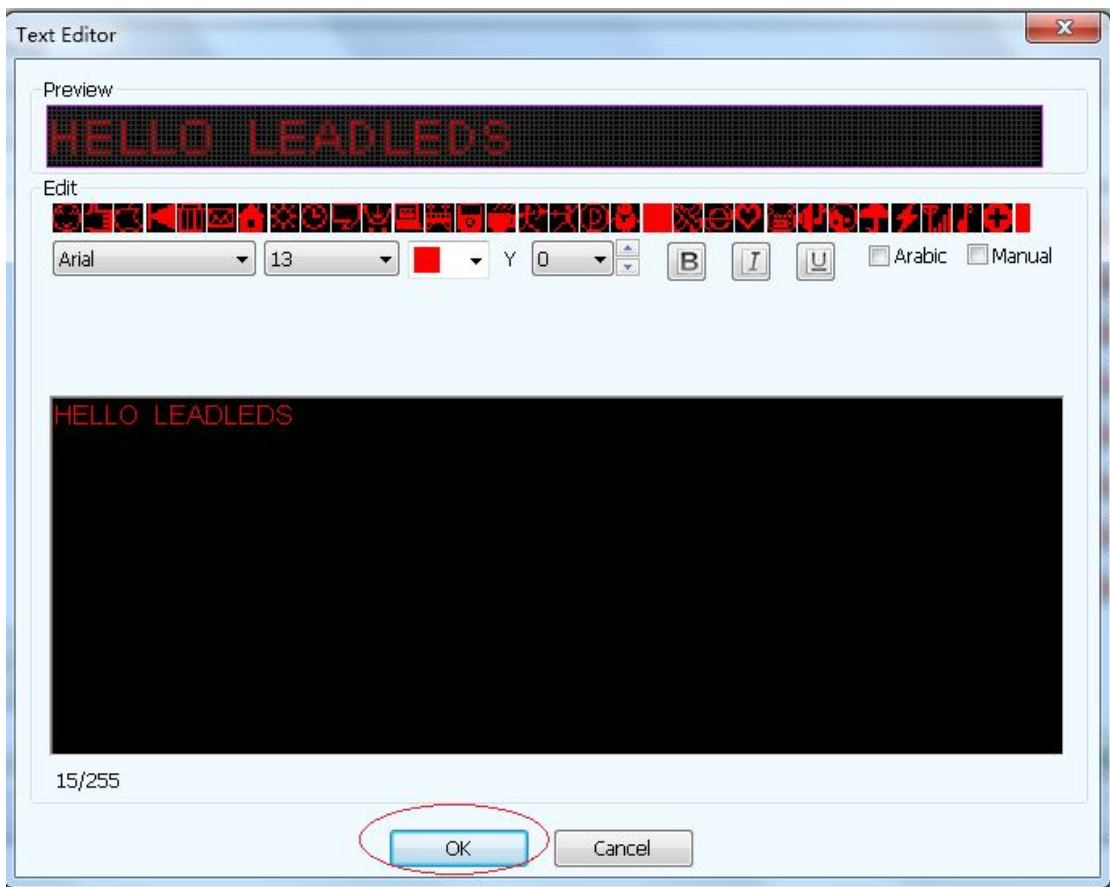
(Do not choose animation effects; Blink and marquee selection based on need.)



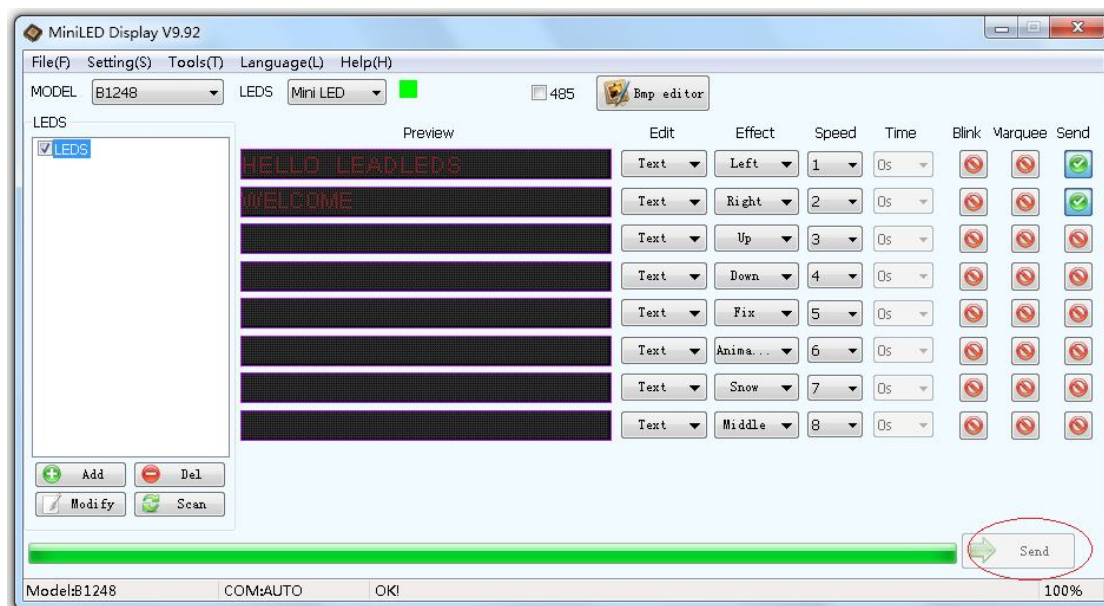
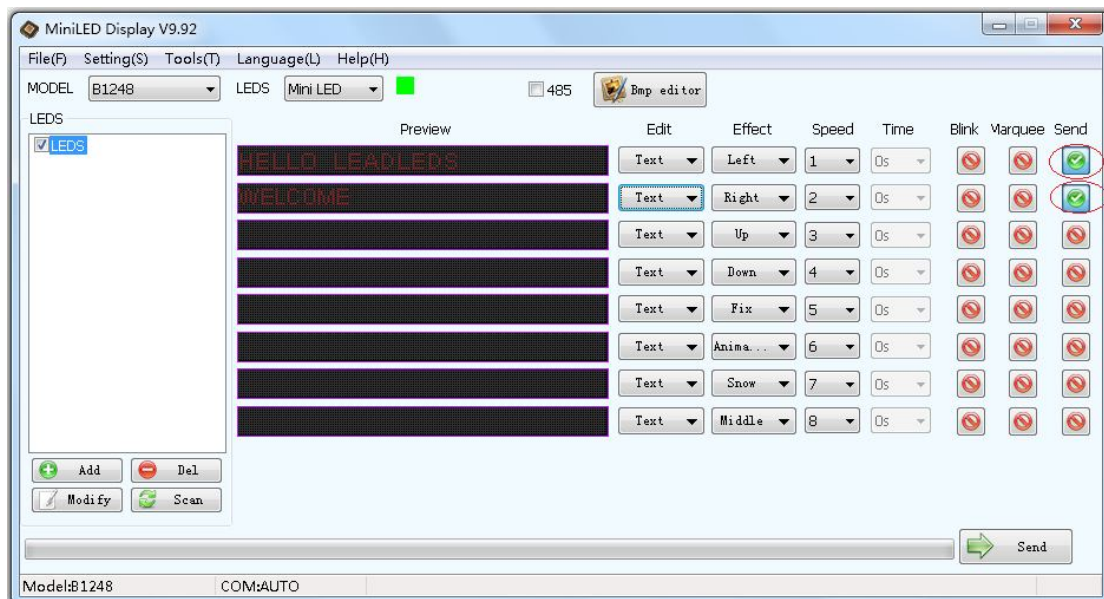
Step4: Click “Text” to enter the text edit page, now you can program the message you want.



Step5: Edit the text in point interface, interface appears as follows, the software built-in some symbols to choose from.



Step6: After programming all messages, choose the message you want to send, click “Send”, and the message will be displayed in the sign.



Step7: Move the USB cable

Buttons Function:

Select brightness: the back there is a badge with sun icon buttons to adjust the brightness: 25%, 50%, 75%, 100% of the total of four, different brightness of different standby time, can choose a minimum of 8 hours 50% above, the brighter the brightness using the shorter time; LED display is bright SMD lamp beads, no need to choose a high brightness

Select message: press the button beside the brightness button to choose the message to display

Turn ON/OFF switch: slide the button on the sign side to turn on or turn off the led display

USB port to charge and data input.

2 magnets attached, a brooch for wear.

-----**Thank you for use LEADLEDS products**-----

If have any technical question, please send your question to: jingzhi5685@leadleds.com