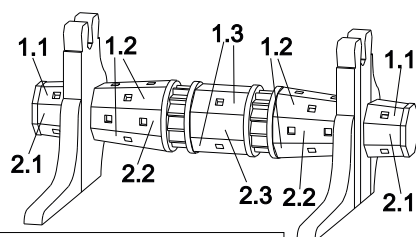
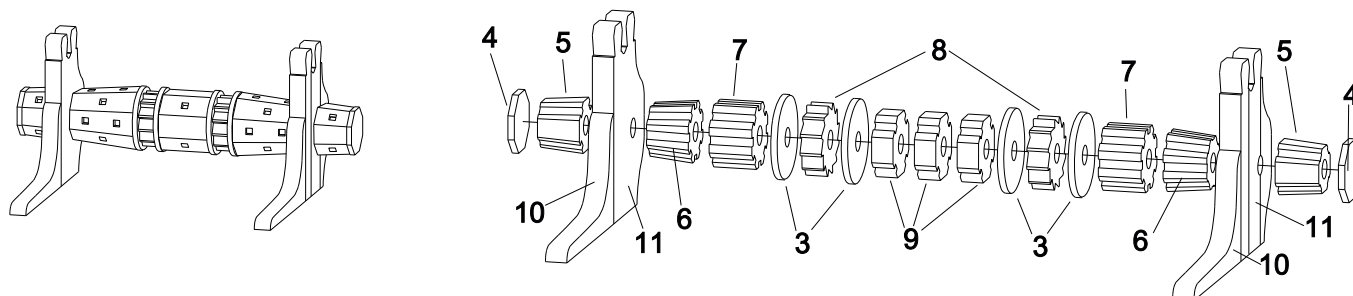


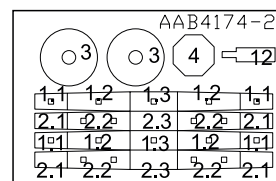
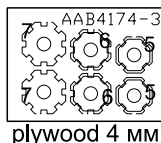
Windlass, ref. AAB4174 / 0302

Marginal points length: 41 mm

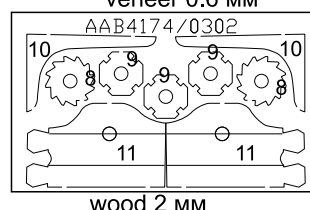
The thickness of the central drum: 6.8 mm



The kit contains:
 1. Plate **AAB4174 / 0302** - 1 pc
 2. Plate **AAB4174-2** - 2 pcs
 3. Plate **AAB4174-3** - 1 pc
 4. Round billet with conical ends - 1 pc



veneer 0.6 mm



The assembly of the windlass is done in 2 steps:

in the first phase the basics of the drums (in the area of items 1.1 - 1.3 и 2.1 - 2.3) are assembled and glued around with corresponding veneer parts;

in the second phase, assembled and treated drums, also with gears and gaskets are strung and aligned on the wooden pin.

When you build the basics of the elements 5 and 6+7, whittle down the drums to a cone at the engraved lines.

Try to set the foundations relative to each other as accurate as possible, according to the slots. The veneer is glued in such a way, that the holes in it would match the slots in the foundations.

Pay attention to the order of the details made of veneer relative to each other.

Gear teeth 8 are put forward to the bow.

The tabs 12 for fixing the windlass, that are resisting the gears 8, are placed after the installation of the windlass on deck.

Attention! During assembly of the bitts (10, 11) the longer part of knee 10 is placed on the deck.