

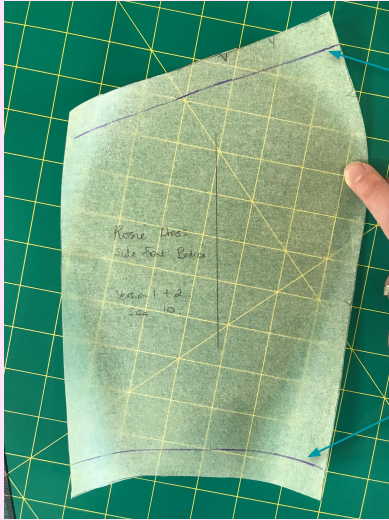
Creating a facing/lining combo for The Rosie Dress



Sewing Gem

Step 1

Take the pattern piece and draw two lines to show the seam allowances at the top and the bottom of the pattern piece. I traced mine off the pdf pattern pieces first in the size I wanted. Below you can see the side front bodice traced off in a size 10 with seam allowances marked (purple line). Do this for all bodice pattern pieces.

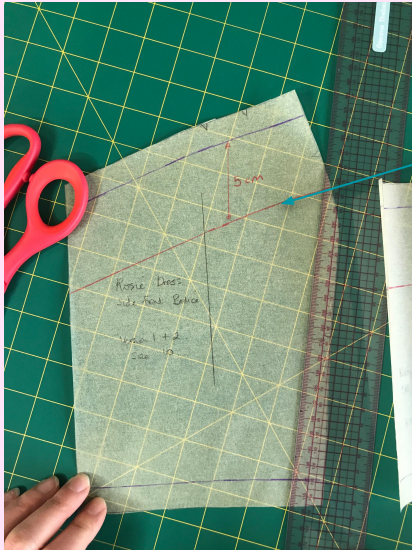


Seam Allowances marked on top and bottom.

Sewing Gem

Step 2

Draw a line to show where you would like your facing to end and the lining to begin (red line). I usually do mine around 5cm from the bottom of the seam allowance (purple line in the picture). Drawing on the seam allowance helps me to decide how I want it to look as you won't see the seam allowance once the dress is sewn together.



Where facing and lining will meet



Sewing Gem

Step 3

Trace the facing piece (top piece) off the pattern and then add 1.5cm seam allowance at the bottom.



Tracing off the facing piece
(make sure you add the
1.5cm seam allowance at the
bottom)

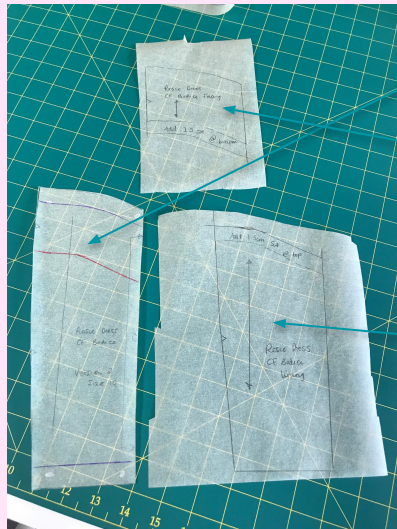
Sewing Gem

Step 4

Repeat for the lining piece (bottom piece) but add the 1.5cm seam allowance to the top.

When you finish you should have

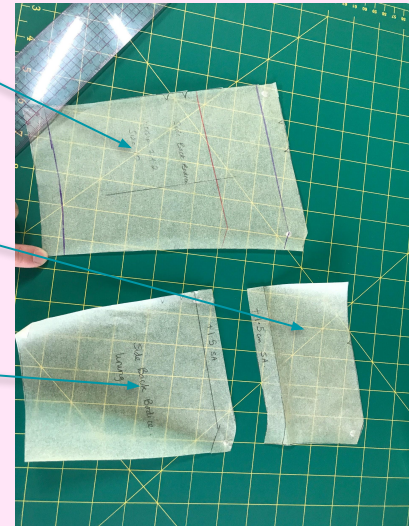
- The original pattern piece
- One facing piece with added seam allowance
- One lining piece with added seam allowance.



Original pattern piece

Facing piece

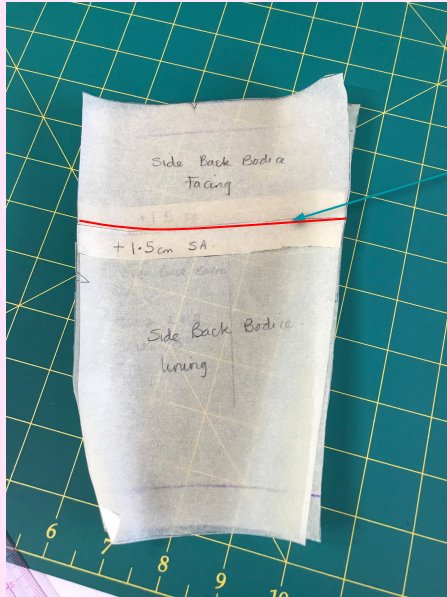
Lining piece



Sewing Gem

Step 5

Check the facing and lining piece fit perfectly over the original pattern piece. You will need to match up the STITCHING line.



Lay the pieces on top of each other meeting at the stitching line



Sewing Gem

Step 6

If you want to keep things really neat walk the facing and lining pieces together along the stitching line (almost as if it were sewn together) and if you have any bits like this sticking out on the seam allowance trim it off.

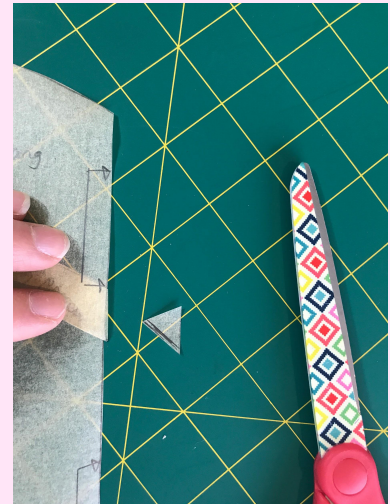
Walk the pattern pieces together



Identify excess



Trim



Sewing Gem

And there you have it - your pattern is ready!

Sometimes the sewing of this on the curved parts can be a bit tricky. More to come on that!!

