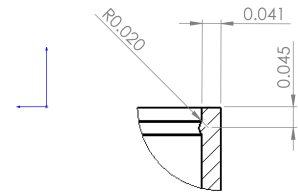
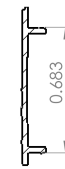


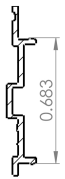
SECTION A-A



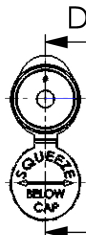
DETAIL C  
SCALE 5 : 1



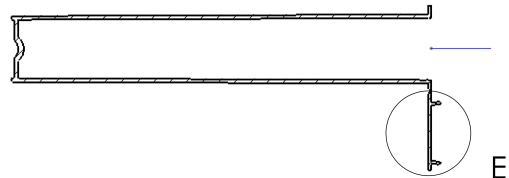
DETAIL E  
SCALE 2 : 1



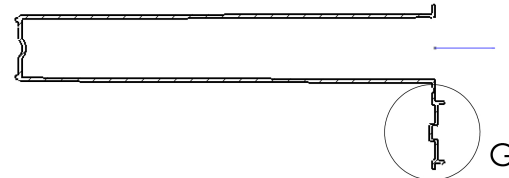
DETAIL G  
SCALE 2 : 1



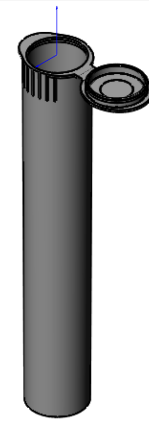
SECTION D-D



SECTION F-F



- NOTES:
- 0.020" max flash allowed
  - Hinge Life Cycle 25min.
  - Opening Force = 14-24LBS
  - Section D-D shows the main configuration for the tube bottom.
  - Detail E shows the main configuration for the tube top / lid.
  - Section F-F and Detail G shows other acceptable bottom and top / lid configurations.



116 MM Tube

Dimensions are in Inches	Part/Sheet Number	Weight
Tolerances:	Material	REV
Two Place Decimal ±0.01	Scale	1
Three Place Decimal ±0.005	Scale	1:1
	Page	1/1