

Sinco Signature Vertical Cutter Mixer



CONTENTS

A	GENERAL INFORMATION	Page 2
A1	DESCRIPTION	Page 3
A2	TECHNICAL INFORMATION	Page 3
A3	TRANSPORT	Page 3
A4	UNPACKING	Page 3
B	ASSEMBLY	Page 4
C	GENERAL WARNINGS	Page 4
D	USING THE DEVICE	Page 5
AND	CLEANING and MAINTENANCE	Page 8
F	TROUBLESHOOTING	Page 8
G	SPARE PARTS LIST - DISASSEMBLED VIEW	Page 9
H	ELECTRICAL CIRCUIT DIAGRAM	Page 17

Sinco Signature Vertical Cutter Mixer

A GENERAL INFORMATION

READ THE OPERATING AND MAINTENANCE INSTRUCTIONS BEFORE INSTALLING THIS DEVICE. READ CAREFULLY. IMPROPER INSTALLATION AND REPLACEMENT OF PARTS MAY DAMAGE THE PRODUCT OR CAUSE INJURY TO PERSONS. OUR COMPANY IS NOT RESPONSIBLE FOR INTENTIONAL DAMAGE TO THE DEVICE, DAMAGES CAUSED BY NEGLIGENCE, FAILURE TO COMPLY WITH THE INSTRUCTIONS AND REGULATIONS, OR INCORRECT CONNECTIONS. UNAUTHORIZED INTERFERENCE WITH THE DEVICE WILL VOID THE PRODUCT WARRANTY.

1. Keep this booklet safe to hand for future reference for other operators.
Keep it somewhere.
2. **The device must be installed in accordance with the current regulations and instructions in the country of use. must be done by authorized personnel.**
3. This device must be used by trained persons.
4. In case of device malfunction, turn off the device. The device must only be installed by the manufacturer.
An authorized service center must provide service. Ask for original spare parts.

Sinco Signature Vertical Cutter Mixer

A1 DESCRIPTION

*This high-efficiency device is produced for use in industrial kitchens.
It is a professional vegetable shredding machine.

MODEL	DIMENSIONS	WEIGHT	PACKING DIMENSIONS
SC-1	610x645x1045	71KG	720x700x1180
SC-2	720x685x1250	112KG	760x720x1400

MODEL	CAPACITY	BOWL DIMENSION	KW	VOLTS	PLUG DIMENSIONS	AMPS
SC-1	20LT	300X300	1.5-2.5KW	380	5x1,5	32
SC-2	50LT	400X400	3,5-5,5KW	380	5X1,5	32

A3 TRANSPORT

*This device is handheld. Do not hit or drop the device while carrying it.

A4 OPENING THE PACKAGE

*The device must be opened and its packaging must be destroyed in accordance with the regulations in the country of use.
Food contact parts are stainless steel. All plastic parts, symbol of the material
It is marked with .

*The parts of the device have arrived completely and if it has suffered any damage during transportation.
Check that it is not damaged.

Sinco Signature Vertical Cutter Mixer

B ASSEMBLY

*Place the product on a flat and solid ground, take necessary precautions against risks of tipping over. take it.

*The personnel who will provide installation and service to the device must be experts in their field and have an installation-service license issued by our company.

*Connection to the electrical power source must be made by an authorized person.

*Make sure that the voltage you connect the device to is the same as the voltage value written on the device label.



The grounding connection of the device must be made in accordance with standards and safety rules.

*The grounding of the device must be connected to the grounding line of the electrical installation on the nearest panel.

*The device's electrical connection, main fuse and residual current fuse must be made in accordance with the current regulations and rules.

C GENERAL WARNINGS



*Do not use the device in facilities without adequate lighting.



*Do not touch any moving parts while using the device.



*Do not install the device near flammable or explosive materials.



*Do not operate the device idle.



*Do not load too much below or above the capacity of the device.



*Do not intervene in the device without using appropriate protective equipment.



*In case of a fire or flash of flame for any reason in the area where the device is used, immediately turn off the gas valves and electrical switches (if any) and use a fire extinguisher. Never use water to extinguish the flame.



*Damages caused by lack of grounding connection will not be covered by the warranty.



*Do not put your hand into the chopping chamber while the device is operating.

Sinco Signature Vertical Cutter Mixer

D USE OF THE DEVICE

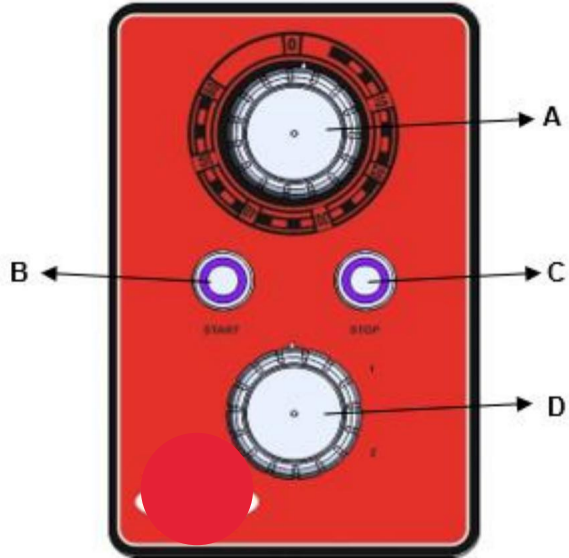
*Control Panel:

A: A CARAVAN

B: START

C: STOP

D: HIZ AYARI



*Use of:

- Before operating the device, clean the chopping chamber and blade with a wet cloth. • Make sure that the pin on the cutting blade of the device fits into the channel on the shaft. • Open the top cover of the device and fill the ingredients into the vegetable container. • Press the START button to start the device. • If the device will operate at 380 V, make sure it works in the direction of the arrow when plugging in during initial operation.
 - be careful. If it does not work in the direction of the arrow, change the phases from the plug.
- If you want to add material (solid, liquid) without opening the lid while the device is operating, the solid materials can be added through the lid gap after dividing them into small pieces. • Since the device has two speeds, turn it to (1) for slow use and (2) for fast use. • If the device was operated without selecting a time period, after the vegetable chopping process is completed,
 - Stop the device by pressing the STOP button.
- To empty the material, lift the lid and remove the shredding blade. felling
 - Lay the boiler on its side by turning its handle down.
- After the emptying process is completed, lift the handle of the boiler and bring the boiler to an upright position.
 - When you are finished using the device, unplug it from the socket.

Sinco Signature Vertical Cutter Mixer

D USE OF THE DEVICE

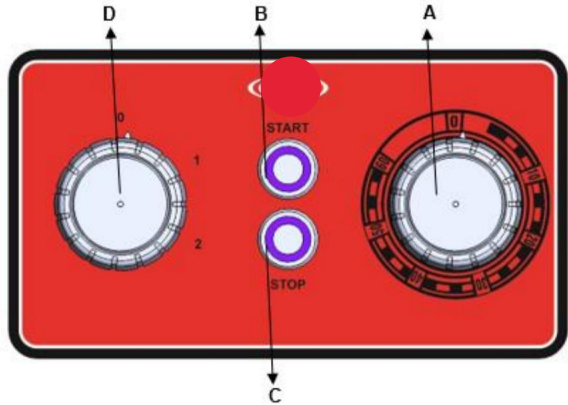
*Control Panel:

A: A CARAVAN

B: START

C: STOP

D: HIZ AYARI



*Use of:

- Before operating the device, clean the chopping chamber and blade with a wet cloth.
- Make sure that the pin on the cutting blade of the device fits into the channel on the shaft.
- Open the top cover of the device and fill the ingredients into the vegetable container.
- Press the START button to start the device.
- If the device will operate at 380 V, make sure it works in the direction of the arrow when plugging in during initial operation. If it does not work in the direction of the arrow, change the phases from the plug.
- If you want to add material (solid, liquid) without opening the lid while the device is operating, the solid materials can be added through the lid gap after dividing them into small pieces.
- Since the device has two speeds, turn it to (1) for slow use and (2) for fast use.
- If the device was operated without selecting a time period, after the vegetable chopping process is completed, Stop the device by pressing the STOP button.
- To empty the material, lift the lid and remove the shredding blade. felling Lay the boiler on its side by turning its handle down.
- After the emptying process is completed, lift the handle of the boiler and bring the boiler to an upright position.
 - When you are finished using the device, unplug it from the socket.

Sinco Signature Vertical Cutter Mixer

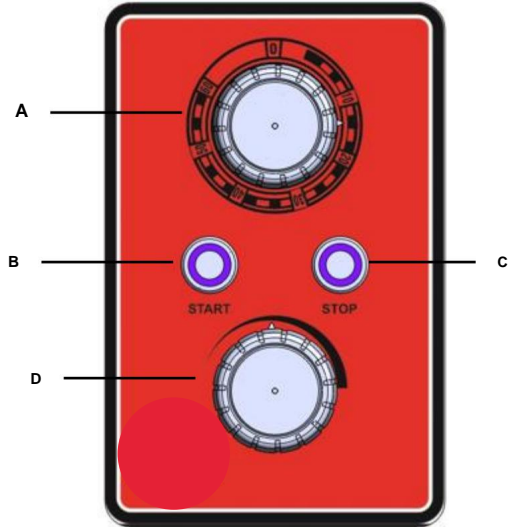
D USE OF THE DEVICE

A: A CARAVAN

B: START

C: STOP

D: HIZ AYARI



*Use of:

- Before operating the device, clean the chopping chamber and blade with a wet cloth. • Make sure that the pin on the cutting blade of the device fits into the channel on the shaft. • Open the top cover of the device and fill the ingredients into the vegetable container. • Press the START button to start the device. • If you want to add material (solid, liquid) without opening the lid while the device is operating, the solid materials can be added through the lid gap after dividing them into small pieces.
- Since the device is speed controlled, adjust the speed using the speed button. • If the device was operated without selecting a time period, after the vegetable chopping process is completed, Stop the device by pressing the STOP button.
- To empty the material, lift the lid and remove the shredding blade. felling Lay the boiler on its side by turning its handle down.
- After the emptying process is completed, lift the handle of the boiler and bring the boiler to an upright position.
 - When you are finished using the device, unplug it from the socket.

Sinco Signature Vertical Cutter Mixer

AND CLEANING and MAINTENANCE

ÿ **What to Do After Each Use:** • Clean the outer surface of the device, the bowl and the cutting blade with a wet cloth, then dry them.

- While cleaning the device, make sure that the plug is not plugged in or the switch is off. Make sure it is. • Do not use acid or similar materials when cleaning the device. • While cleaning the device, do not wash the device with water. Otherwise electricity Water gets into the engine and causes it to burn.

ÿ **Things to be Done Periodically;** • Maintenance

should only be performed by trained persons. • Perform periodic maintenance of the device every 15 days. • Vegetable Chopping machines require minimum maintenance (motor and bearings lubricated).

- Depending on the frequency of use, the contactor maintenance of the device should be carried out by spraying dry air after the electrical connection is disconnected. • Maintenance of the cutting blade;
 - Sharpen the knife using a wet sharpening stone without disturbing the cutting angles.

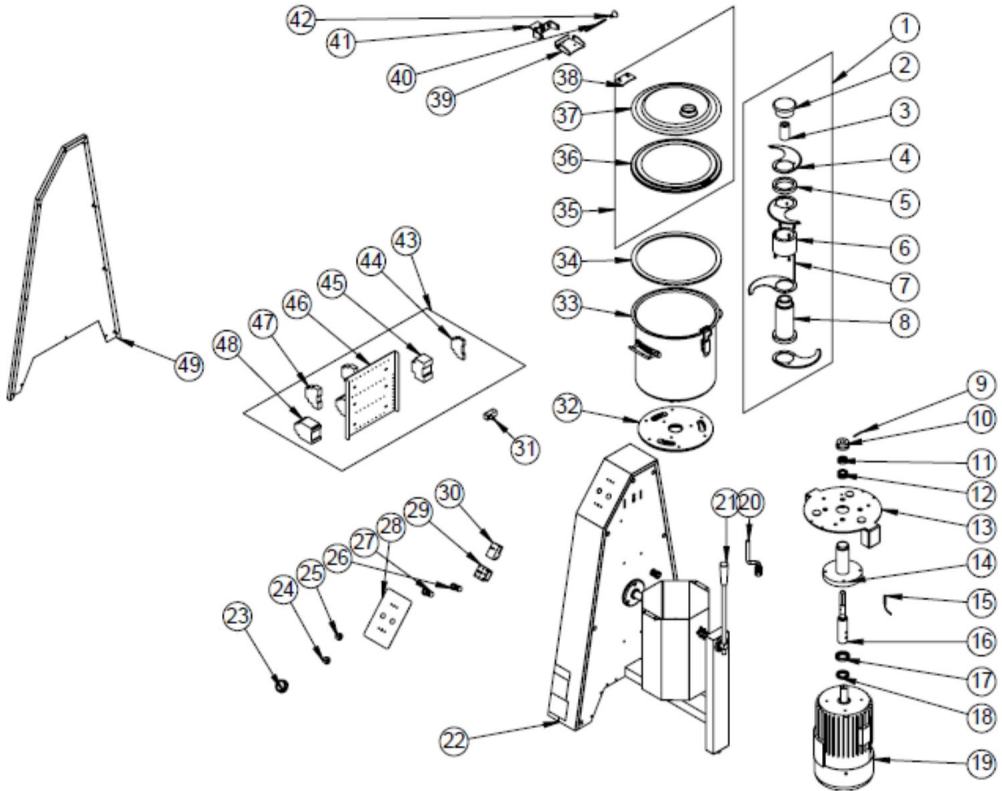
F TROUBLESHOOTING

<p>THE DEVICE DOES NOT WORK</p>	<ol style="list-style-type: none"> 1. Check whether the device is plugged into the socket. 2. Check the electrical connections. 3. Check whether the boiler cover is open.
<p>FROM THE DEVICE HIS COMING</p>	<ol style="list-style-type: none"> 1. Check the shredding blade. 2. Check whether there is material jam inside the hopper. 3. If you hear noise from the motor, stop the device and call the authorized service.
<p>DEVICE STOPPED</p>	<ol style="list-style-type: none"> 1. The device may stop due to low voltage. In this case the voltage Please check. 2. The device may stop when overloaded. In this case, empty some of the material from the boiler and wait for the engine to cool down for a while. • If vegetable chopping is not
<p>done in appropriate quality, • If any of the safety functions are not working, ÿ Do not use the device.</p>	

***If the above problems still persist, contact our authorized services.**

Sinco Signature Vertical Cutter Mixer

G SPARE PARTS LIST - DISASSEMBLED VIEW



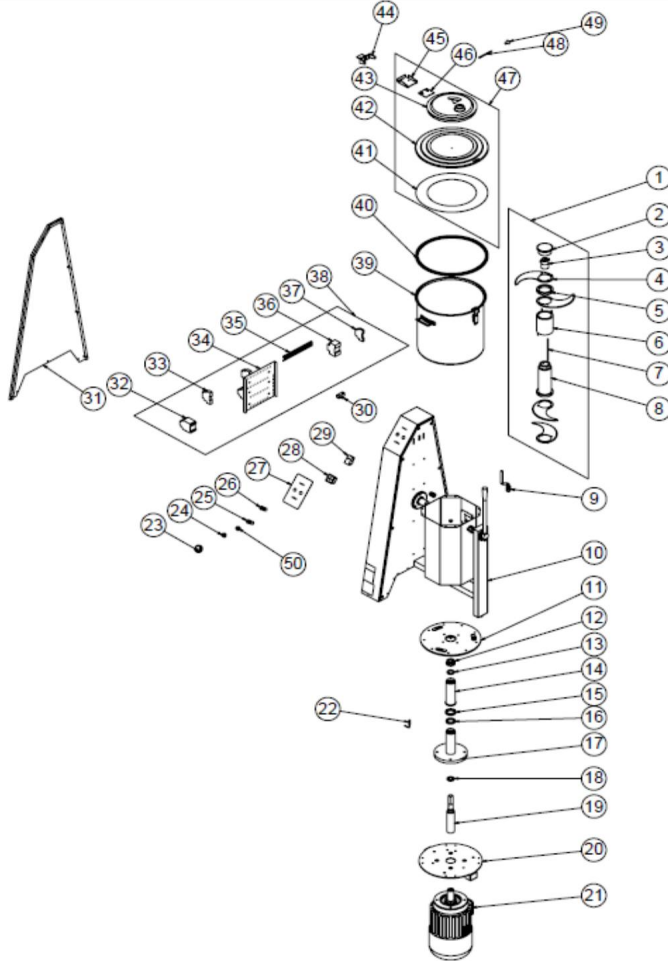
NO	NAME OF THE PRODUCT	PRODUCT CODE
1	KNIFE SET	ARA-ERS.SD-0007
2	KNIFE HOLDER ALUMINUM	YTL-ERS.SD-KS-0093
3	BODY BUSH	YTL-ERS.SD-KS-0022
4	OVAL BLADE	M.BCK-SD-003
5	THIN BLADE ALUMINUM	YDK-ERS.SD-CN-0003
6	THICK BLADE ALUMINUM	YDK-ERS.SD-CN-0002
7	KNIFE SUPPLY	YTL-ERS.SD-KS-0048
8	BLADE BODY	YDK-ERS.SD-CN-0001
9	SHAFT PIN	YTL-ERS.SD-KS-0024
10	ENGINE SHAFT PLASTIC	M.ENJ-ERS-PLS-SDM-015

Sinco Signature Vertical Cutter Mixer

11	FELT 20*37*10	M.CNT-KCE-013
12	BEARING (6904 ZZ)	M.RLM-NRM-043
13	KAZAN TABLA SACI	YSC-ERS.SD-LZ-0051
14	SLEEVE BOTTOM CASTING	HDK-ALM-SD-004
15	MAGNETIC SENSOR	M.ELK-SWC-KTG-001
16	MOTOR MyLy	YTL-ERS.SD-KS-0015
17	FELT 35*52*10	M.CNT-KCE-012
18	FELT 30*47*7	M.CNT-KCE-003
19	ELECTRIC MOTOR	M.ELK-MTR-RSM-035
20	HOSE	HEL-MK-SPR-002
21	HANDLE	ERS.M.AKS-KLP-BKL-009
22	SIX	.
23	BUTTON	M.ENJ-ERS-PLS-PS-018
24	BUTTON SOCKET	M.AKS-DGM-MUH-009
25	BUTTON SOCKET	M.AKS-DGM-MUH-010
26	RED BUTTON (MOMENTARY)	M.ELK-SLT-BTL-010
27	GREEN LIGHT BUTTON	ERS.M.ELK-SLT-BTL-011
28	PANEL SHEET	YSC-ERS.SD-LZ-0077
29	SWITCH	M.ELK-SLT-PKO-015
30	TIME CLOCK (60 MINUTES)	M.ELK-MEK-MTM-004
31	SWITCH	M.ELK-SWC-ERS-001
32	BOILER BOTTOM PLASTIC	M.ENJ-ERS-PLS-SDM-067
33	KAZAN (30*30)	M.MTS-SDM-004
34	COVER GASKET	M.CNT-ERS-043
35	LID	ARA-ERS.SD-0008
36	COVER SHEET	YSC-ERS.SD-LZ-0044
37	BOILER COVER	M.ENJ-ERS-PLS-SDM-014
38	HINGE CONNECTION SHEET	YSC-ERS.SD-LZ-0078
39	DOOR HINGE SHEET	YSC-ERS.SD-LZ-0052
40	HINGE SHAFT	YTL-ERS.SD-KS-0020
41	BODY HINGE SHEET	YSC-ERS.SD-LZ-0053
42	HANDLE	ERS.M.AKS-KLP-LUX-004
43	ELECTRICAL PANEL GROUP	M.ELK-PNO-SD-003
44	GZ1AN11 CONTACTOR	ERS.M.ELK-KNT-KNT-029
45	ENGINE PROTECTION SWITCH	M.ELK-SLT-MK-007
46	MANUEL PANO SACI	YSC-ERK.KD-LZ-0040
47	TIME RELAY (30 SECONDS)	ERS.M.ELK-KNT-ROL-006
48	CONTACTOR LC1D09M7	ERS.M.ELK-KNT-KNT-027
49	RIGHT SIDE COVER SHEET	YSC-ERS.SD-LZ-0054

Sinco Signature Vertical Cutter Mixer

G SPARE PARTS LIST - DISASSEMBLED VIEW



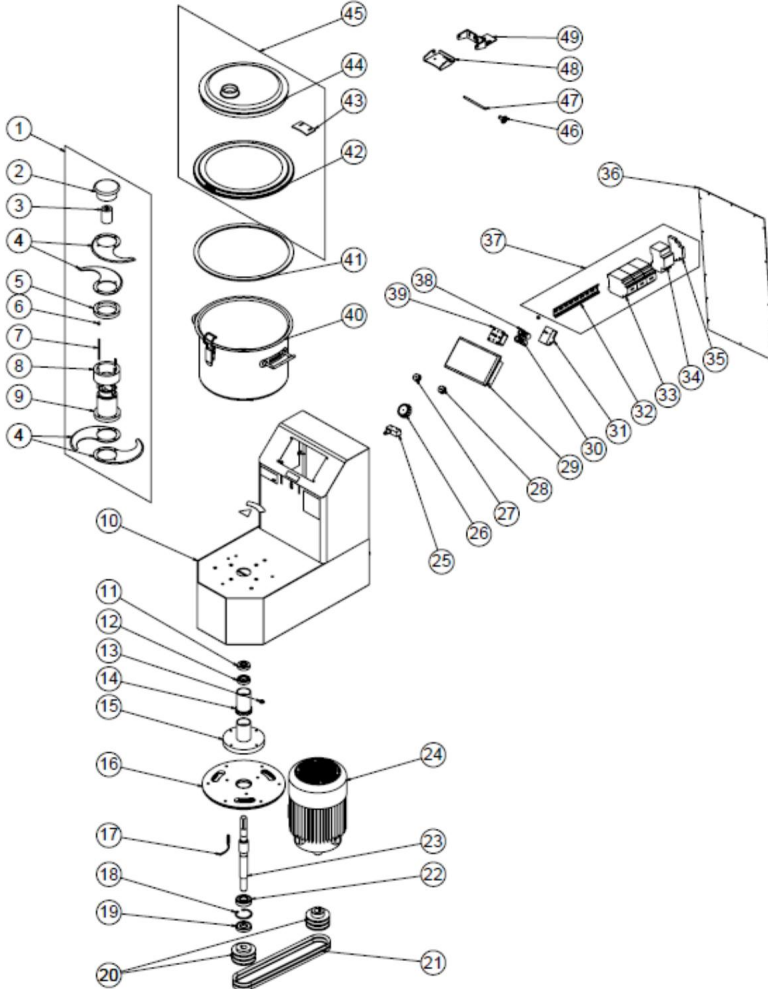
NO	NAME OF THE PRODUCT	U. CODE
1	KNIFE KIT	ARA-ERS.SD-0010
	KNIFE HOLDER ALUMINUM 2	YTL-ERS.SD-KS-0092
3	BODY BUSHING	YTL-ERS.SD-KS-0083
4	OVAL BLADE 5	M.BCK-SD-023
	THIN BLADE ALUMINUM	YDK-ERS.SD-CN-0022
6	THICK BLADE ALUMINUM	YDK-ERS.SD-CN-0021

Sinco Signature Vertical Cutter Mixer

7	KNIFE SUPPLY	YTL-ERS.SD-KS-0080
8	BLADE BODY	YDK-ERS.SD-CN-0020
9	HOSE	HEL-MK-SPR-002
10	SIX	
11	BOILER BOTTOM PLASTIC	M.ENJ-ERS-PLS-SDM-071
12	ENGINE SHAFT PLASTIC	YTL-ERS.SD-KS-0091
13	FELT 30*42*7	M.CNT-KCE-038
14	SLEEVE SHAFT	YTL-ERS.SD-KS-0078
15	FELT 45*62*10	M.CNT-KCE-037
16	FELT 40*55*10	M.CNT-KCE-036
17	SLEEVE BOTTOM CASTING	HDK-ALM-SD-020
18	RULMAN (6806 Z)	M.RLM-NRM-041
19	MOTOR MÿLÿ	YTL-ERS.SD-KS-0077
20	KAZAN PLATE BAG	YSC-ERS.SD-LZ-0067
21	ELECTRIC MOTORS	M.ELK-MTR-RSM-072
22	MAGNETIC SENSORS	M.ELK-SWC-KTG-001
23	BUTTONS	M.ENJ-ERS-PLS-PS-018
24	BUTTON SOCKET	M.AKS-DGM-MUH-009
25	RED BUTTONS (INSTANT)	M.ELK-SLT-BTL-010
26	GREEN LIGHT BUTTONS	ERS.M.ELK-SLT-BTL-011
27	SACI CLOTH	YSC-ERS.SD-LZ-0077
28	SWITCHES	M.ELK-SLT-PKO-015
29	TIME HOURS (60 MINUTES)	M.ELK-MEK-MTM-004
30	SWITCH	M.ELK-SWC-ERS-001
31	LEFT SIDE COVER SHEET	YSC-ERS.SD-LZ-0064
32	CONTACTOR LC1D09M7	ERS.M.ELK-KNT-KNT-027
33	TIME RELAY (30 SECONDS)	ERS.M.ELK-KNT-ROL-006
34	MANUEL PANO SACI	YSC-ERK.KD-LZ-0040
35	VENDING RAIL	YEL-ERS.SD-KS-0005
36	ENGINE PROTECTION SWITCH	M.ELK-SLT-MK-008
37	G21AN11 CONTACTOR	ERS.M.ELK-KNT-KNT-029
38	ELECTRICAL PANEL GROUP	M.ELK-PNO-SD-008
39	KAZAN (40*40)	M.MTS-SDM-012
40	COVER GASKET	M.CNT-ERS-044
41	COVER STRAP SHEET	YSC-ERS.SD-LZ-0066
42	COVER SHEET	YSC-ERS.SD-LZ-0071
43	BOILER COVER	M.ENJ-ERS-PLS-SDM-014
44	BODY HINGE PLATE	YSC-ERS.SD-LZ-0053
45	DOOR HINGE PLATE	YSC-ERS.SD-LZ-0072
46	HINGE CONNECTION PLATE	YSC-ERS.SD-LZ-0079
47	COVERS	ARA-ERS.SD-0009
48	HINGE SHAFT	YTL-ERS.SD-KS-0020
49	HANDLES	ERS.M.AKS-KLP-LUX-004
50	BUTTON SOCKET	M.AKS-DGM-MUH-010

Sinco Signature Vertical Cutter Mixer

G SPARE PARTS LIST - DISASSEMBLED VIEW



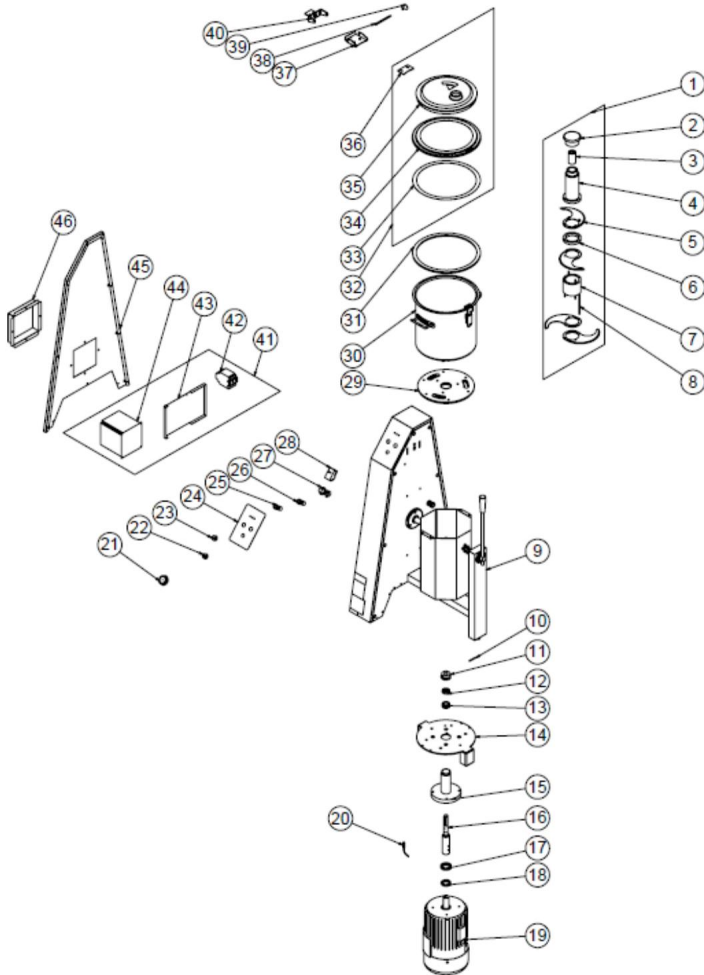
NO	NAME OF THE PRODUCT	U. CODE
1	KNIFE SET	ARA-ERS.SD-0006
2	KNIFE HOLDER ALUMINUM	YTL-ERS.SD-KS-0093
3	BLADE BUSH	YTL-ERS.SD-KS-0038
4	OVAL KNIFE	M.BCK-SD-003

Sinco Signature Vertical Cutter Mixer

5	THIN BLADE ALUMINUM	YDK-ERS.SD-CN-0003
6	M5 INOX NUT	B-MKS-INX-AKB-M5
7	KNIFE SUPPLY	YTL-ERS.SD-KS-0049
8	THICK BLADE ALUMINUM	YDK-ERS.SD-CN-0008
9	KNIFE BODY	YDK-ERS.SD-CN-0007
10	CHASSIS	
11	FELT 20*42*10	M.CNT-KCE-016
12	BEARING (6004 2RS)	M.RLM-NRM-016
13	PLASTIC SCREW CAP	M.ENJ-ERS-PLS-SDM-069
14	HARD	YTL-ERS.SD-KS-0039
15	SLEEVE CASTING	YDK-ERS.SD-CN-0036
16	BOILER BOTTOM PLASTIC	M.ENJ-ERS-PLS-SDM-067
	MAGNETIC SENSOR 17	M.ELK-SWC-KTG-001
18	SEGMENTS (471-25) 19	B-SEG-SYH-005
	FELT 25*52*10	M.CNT-KCE-015
20	SLEEVE PULLEY	YDK-ERS.SD-CN-0016
21	STRAP (13*850)	M.KYS-VKY-005
22	BEARING (6205 2RS)	M.RLM-NRM-029
23	SLEEVE SHAFT	YTL-ERS.SD-KS-0028
24	ELECTRIC MOTOR	M.ELK-MTR-RSM-022
25	SWITCH	M.ELK-SWC-ERS-001
26	BUTTONS	M.ENJ-ERS-PLS-PS-018
27	BUTTON SOCKET	M.AKS-DGM-MUH-010
28	BUTTON SOCKET	M.AKS-DGM-MUH-009
29	SACI CLOTH	YSC-ERS.SH-LZ-0074
	RED BUTTON (INSTANT) 30	M.ELK-SLT-BTL-010
31	TIME CLOCKS (60 MINUTES)	M.ELK-MEK-MTM-004
32	VENDING RAILS	YEL-ERS.SD-KS-0004
33	KONTAKTÖR	M.ELK-KNT-KNT-009
34	LEVER	M.ELK-SLT-MK-001
35	KONTAKTÖR	ERS.M.ELK-KNT-KNT-010
36	PANEL BACK SHEET	YSC-ERS.SD-PN-0021
37	ELECTRICAL PANEL GROUP	M.ELK-PNO-SD-005
38	GREEN LIGHT BUTTON	ERS.M.ELK-SLT-BTL-011
39	SWITCH	M.ELK-SLT-PKO-015
40	KAZAN (30*22)	M.MTS-ERS-SDM-005
41	COVER GASKET	M.ENJ-ERS-LST-041
42	COVER SHEET	YSC-ERS.SD-LZ-0044
43	HINGE CONNECTION SHEET	YSC-ERS.SD-LZ-0078
44	BOILER COVER	M.ENJ-ERS-PLS-SDM-014
45	LID	ARA-ERS.SD-0008
46	HANDLE	ERS.M.AKS-KLP-LUX-004
47	HINGE SHAFT	YTL-ERS.SD-KS-0020
48	DOOR HINGE SHEET	YSC-ERS.SD-LZ-0048
49	BODY HINGE PLATE	YSC-ERS.SD-LZ-0053

Sinco Signature Vertical Cutter Mixer

G SPARE PARTS LIST - DISASSEMBLED VIEW



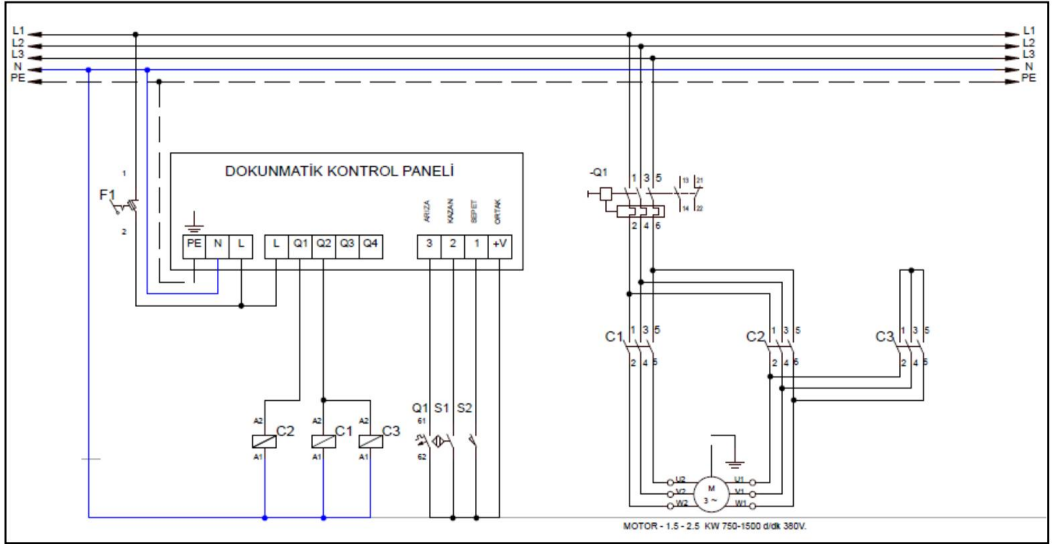
NO		PRODUCT CODE
1	KNIFE SET	ARA-ERS.SD-0007
2	KNIFE HOLDER ALUMINUM	YTL-ERS.SD-KS-0093
3	BODY BUSH	YTL-ERS.SD-KS-0022
4	BLADE BODY	YDK-ERS.SD-CN-0001

Sinco Signature Vertical Cutter Mixer

5	OVAL BLADE	M.BCK-SD-003
6	THIN BLADE ALUMINUM	YDK-ERS.SD-CN-0003
7	THICK BLADE ALUMINUM	YDK-ERS.SD-CN-0002
8	BLADE SUPPLY	YTL-ERS.SD-KS-0048
9	CHASSIS	
10	SHAFT PIN	YTL-ERS.SD-KS-0024
11	ENGINE SHAFT PLASTIC	M.ENJ-ERS-PLS-SDM-015
12	FELT 20*37*10	M.CNT-KCE-013
13	BEARING (6904 ZZ)	M.RLM-NRM-043
14	KAZAN TABLA SACI	YSC-ERS.SD-LZ-0051
15	SLEEVE BOTTOM CASTING	HDK-ALM-SD-004
16	MOTOR MÿLy	YTL-ERS.SD-KS-0015
17	FELT 35*52*10	M.CNT-KCE-012
18	FELT 30*47*7	M.CNT-KCE-003
19	ELECTRIC MOTOR	M.ELK-MTR-RSM-007
20	MAGNETIC SENSOR	M.ELK-SWC-KTG-001
21	BUTTON	M.ENJ-ERS-PLS-PS-018
22	BUTTON SOCKET	M.AKS-DGM-MUH-009
23	BUTTON SOCKET	M.AKS-DGM-MUH-010
24	SACI CLOTH	YSC-ERS.SD-LZ-0077
25	RED BUTTON (MOMENTARY)	M.ELK-SLT-BTL-010
26	GREEN LIGHT BUTTON	ERS.M.ELK-SLT-BTL-011
27	POTENTIOMETER	M.ELK-PMT-4.7
28	TIME CLOCK (60 MINUTES)	M.ELK-MEK-MTM-004
29	BOILER BOTTOM PLASTIC	M.ENJ-ERS-PLS-SDM-067
30	KAZAN (30*30)	M.MTS-SDM-004
31	COVER GASKET	M.CNT-ERS-043
32	LID	ARA-ERS.SD-0008
33	COVER STRAP SHEET	YSC-ERS.SD-LZ-0069
34	COVER SHEET	YSC-ERS.SD-LZ-0044
35	BOILER COVER	M.ENJ-ERS-PLS-SDM-014
36	HINGE CONNECTION SHEET	YSC-ERS.SD-LZ-0078
37	DOOR HINGE SHEET	YSC-ERS.SD-LZ-0052
38	HINGE SHAFT	YTL-ERS.SD-KS-0020
39	HANDLE	ERS.M.AKS-KLP-LUX-004
40	BODY HINGE SHEET	YSC-ERS.SD-LZ-0053
41	ELECTRICAL PANEL GROUP	M.ELK-PNO-SD-009
42	CONTACTOR LC1D09M7	ERS.M.ELK-KNT-KNT-027
43	SACI CLOTH	YSC-ERK.KD-LZ-0041
44	MOTORCYCLE DRIVER	M.ELK-SRC-004
45	LEFT SIDE COVER SHEET	YSC-ERS.SD-LZ-0084
46	SPEED CONTROL COVER SHEET	YSC-ERS.SD-LZ-0085

Sinco Signature Vertical Cutter Mixer

H ELECTRICAL CIRCUIT DIAGRAM

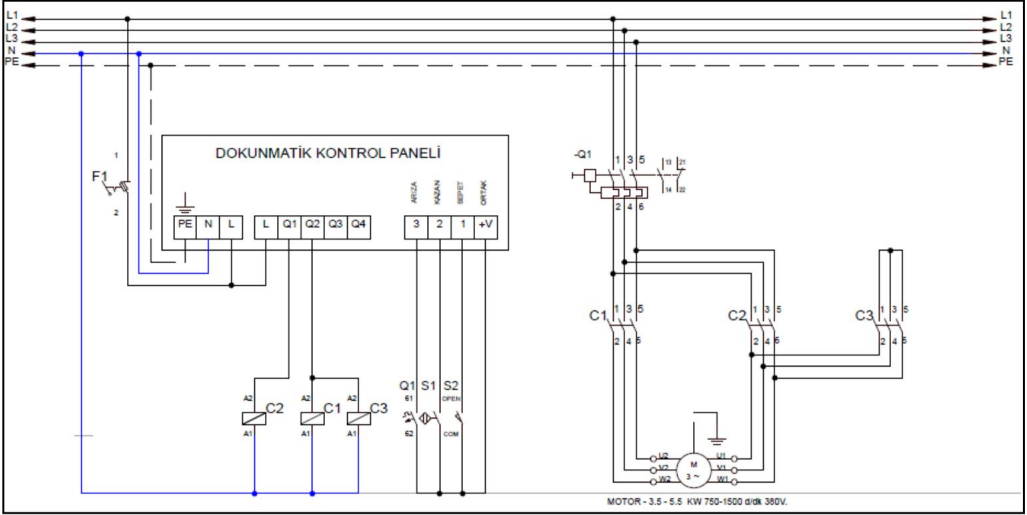


HOME	KW	D/DK	VOLT
	1,5/2,5	750/1500	380

	F1	Q1	C1	C2-C3	M	S1	S2	F1
Terminal	Control Circuit insurance	Motor Protection thermal	1.Speed contactor	2.Speed contactor	Motor	Kazan Magnetic Sensor	Basket Magnetic Switch	Control circuit fuse 1x4A

Sinco Signature Vertical Cutter Mixer

H ELECTRICAL CIRCUIT DIAGRAM

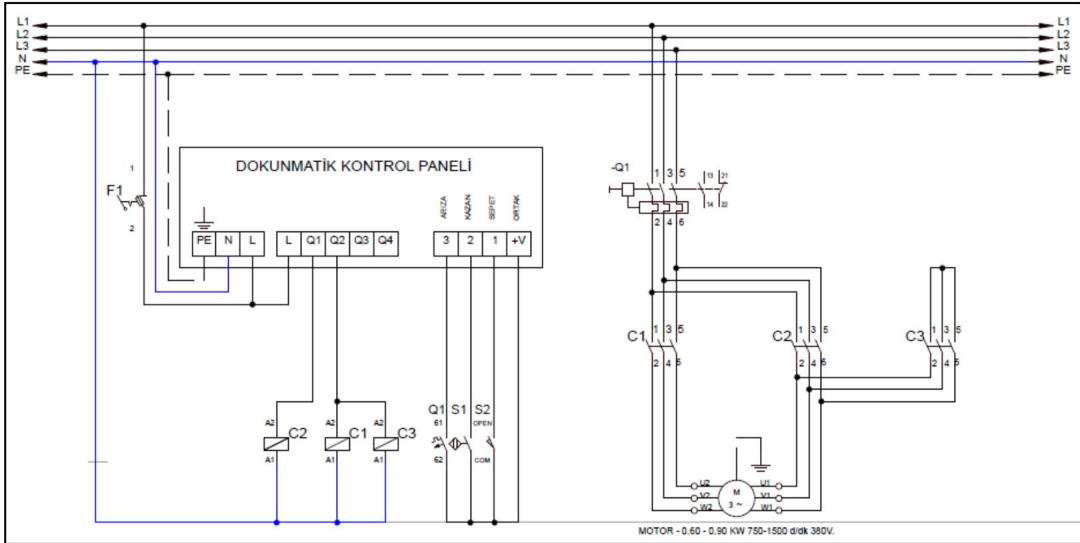


HOME	KW	D/DK	VOLT
	3,5/5,5	750/1500	380

	F1	Q1	C2	C3-C4	M	S1	S2	F1
Terminal	Control Circuit insurance	Motor Protection thermal	1.Speed contactor	2.Speed contactor	Motor	Kazan Magnetic Sensor	Basket Magnetic Switch	Control circuit fuse 1x4A

Sinco Signature Vertical Cutter Mixer

H ELECTRICAL CIRCUIT DIAGRAM

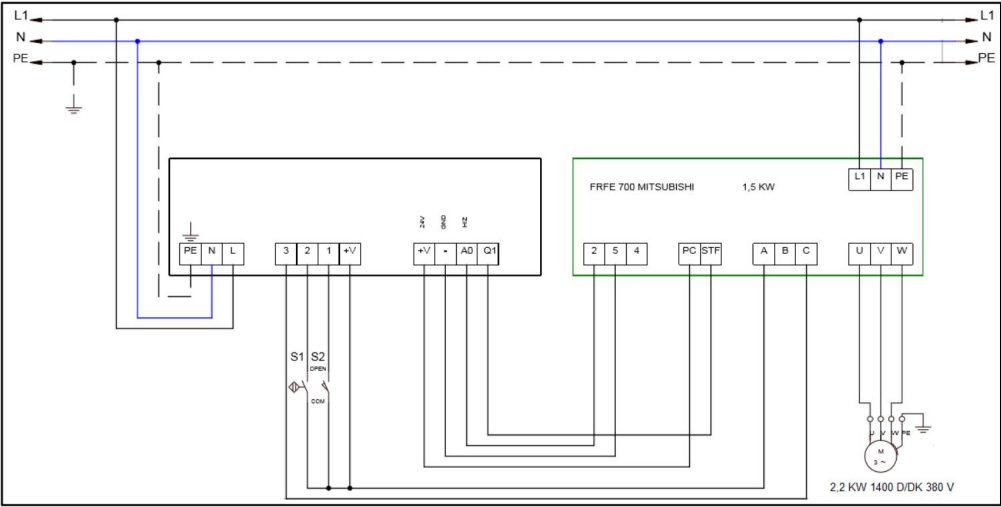


HOME	KW	D/DK	VOLT
	0,60/0,90	750/1500	380

	Q1	C2	C3-C4 M		S1	S2	F1
Terminal	Motor Protection thermal	1.Speed contactor	2.Speed contactor	Motor	Kazan Magnetic Sensor	Basket Magnetic Switch	Control circuit fuse 1x4A

Sinco Signature Vertical Cutter Mixer

H ELECTRICAL CIRCUIT DIAGRAM



	M1	S1	S2
Terminal	Motor	Boiler Magnetic Sensor	Sepet Manyetik Swich