

Sinco Signature Vegetable Cutter with Silo SC-18



CONTENTS

A	GENERAL INFORMATION	Page 2
A1	DESCRIPTION	Page 3
A2	TECHNICAL INFORMATION	Page 3
A3	TRANSPORT	Page 4
A4	UNPACKING	Page 4
B	ASSEMBLY	Page 4
C	GENERAL WARNINGS	Page 5
D	USING THE DEVICE	Page 6
E	CLEANING and MAINTENANCE	Page 8
F	TROUBLESHOOTING	Page 9
G	SPARE PARTS LIST - DISASSEMBLED VIEW	Page 10
H	ELECTRICAL CIRCUIT DIAGRAM	Page 19

Sinco Signature Vegetable Cutter with Silo SC-18

A GENERAL INFORMATION

PLEASE READ THE OPERATING AND MAINTENANCE INSTRUCTIONS CAREFULLY BEFORE INSTALLING THIS DEVICE. IMPROPER INSTALLATION AND REPLACEMENT OF PARTS MAY DAMAGE THE PRODUCT OR CAUSE INJURY TO PERSONS. OUR COMPANY IS NOT RESPONSIBLE FOR INTENTIONAL DAMAGE TO THE DEVICE, DAMAGES CAUSED BY NEGLIGENCE, FAILURE TO COMPLY WITH THE INSTRUCTIONS AND REGULATIONS, OR INCORRECT CONNECTIONS. UNAUTHORIZED INTERFERENCE WITH THE DEVICE WILL VOID THE PRODUCT WARRANTY.

1. Keep this booklet safe to hand for future reference for other operators.
Keep it somewhere.
2. **The device must be installed in accordance with the current regulations and instructions in the country of use. must be done by authorized personnel.**
3. This device must be used by trained persons.
4. In case of device malfunction, turn off the device. The device must only be installed by the manufacturer.
An authorized service center must provide service. Ask for original spare parts.

DESCRIPTION

*This high-efficiency device is produced for use in industrial kitchens.

It is a professional vegetable chopping machine.

SKU	DIMENSIONS	WEIGHT	PACKING DIMENSIONS
SC-18	370x885x1335MM	60KG	400x900x1350

A2 TECHNICAL INFORMATION

	Capacity (kg/sa)	Strength (Kw)	Study voltage (IN)	Cable Cross section (mm ²)	Insurance Choice (A)
SC-18	800	0,75 / 80	380	3x1,5	10

STANDARD BLADES	<ul style="list-style-type: none"> * 1.5 - 8 mm adjustable slicing blade * 5 mm thick Fine grater * 7 mm thick coarse grater
------------------------	---

ADDITIONAL BLADES	Code	Name of the product
		ADJUSTABLE DISC
		5MM MAKES
		7MM MAKES

Sinco Signature Vegetable Cutter with Silo SC-18

		10X10 CUBIC DISC
		10X10 CUBE KNIFE SET
		20X20 CUBIC DISC
		20X20 CUBIC KNIFE SET

A3 TRANSPORT

*This device is handheld. Do not hit or drop the device while carrying it.

OPENING THE A4 PACKAGE

*The device must be opened and its packaging must be destroyed in accordance with the regulations in the country of use. Food contact parts are stainless steel. All plastic parts are marked with the symbol of the material.

*Check that the parts of the device are complete and that there is no damage during transportation.

B MOUNTAINS

*Place the product on a flat and solid ground, take necessary precautions against risks of tipping over.

*The personnel who will provide installation and service to the device must be experts in their field and have an installation-service license issued by our company.

*Connection to the electrical power source must be made by an authorized person.

*Make sure that the voltage you connect the device to is the same as the voltage value written on the device label.












The grounding connection of the device must be made in accordance with standards and safety rules.

*The grounding of the device must be connected to the grounding line of the electrical installation on the nearest panel.

*The device's electrical connection, main fuse and residual current fuse must be made in accordance with the current regulations and rules.

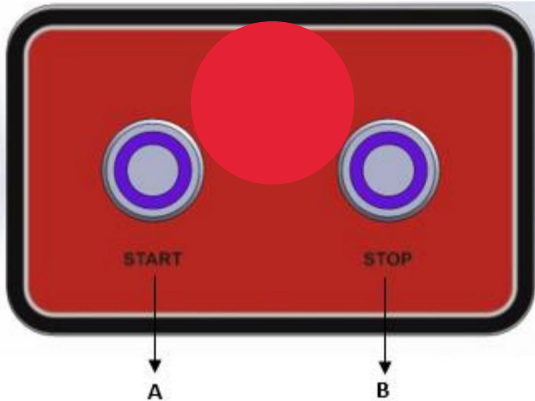
Sinco Signature Vegetable Cutter with Silo SC-18

C GENERAL WARNINGS

-  *Do not use the device in facilities without adequate lighting.
-  *Do not touch any moving parts while using the device.
-  *Do not install the device near flammable or explosive materials.
-  *Do not operate the device idle.
-  *Do not load too much below or above the capacity of the device.
-  *Do not intervene in the device without using appropriate protective equipment.
-  *In case of a fire or flash of flame for any reason in the area where the device is used, immediately turn off the gas valves and electrical switches (if any) and use a fire extinguisher. Never use water to extinguish the flame.
-  *Damages caused by lack of grounding connection will not be covered by the warranty.
-  *Do not put your hand into the chopping chamber while the device is operating. Push the vegetables with the pushing wedge, not with your hands.

Sinco Signature Vegetable Cutter with Silo SC-18

D USE OF THE DEVICE



A: STOP/Off button.
B: START/On button.

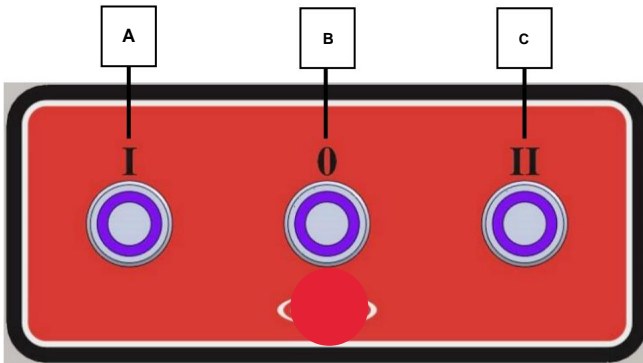
*Use of:

- Before operating the device, clean the chopping chamber and blades with a wet cloth. dry it.
- After selecting the knife you want to use, place the knife apparatus on the shaft. place it.
- Before operating the device, close the cover and make sure that the latch is locked. • Add vegetables to the chopping bowl. • Press the ON button. • For slicing long products (carrots, cucumbers, etc.);
 - ÿ While the device is operating, remove the push block with one hand and throw the product away with the other.
 - ÿ Carry out the slicing process of long products by pushing them with the pushing wedge.
- When you are finished with the device, press the OFF button.

Sinco Signature Vegetable Cutter with Silo SC-18

D USE OF THE DEVICE

*Control Panel:



A: 1st

Cycle B: Stop Button.

A: 2nd Era

*Use of:

- When used in the 1st cycle, the 0 key must be pressed first. • When used in the 2nd cycle, the 0 key must be pressed first.
- When switching between the 1st and 2nd cycle, the 0 key must be pressed. • Before operating the device, clean the chopping chamber and blades with a wet cloth. dry it.
- After selecting the knife you want to use, place the knife apparatus on the shaft. place it.
- Before operating the device, close the cover and make sure that the latch is locked. • Add vegetables to the chopping bowl. • Press the ON button. • For slicing long products (carrots, cucumbers, etc.);
 - While the device is operating, remove the push block with one hand and throw the product away with the other.
 - Carry out the slicing process of long products by pushing them with the pushing wedge.
- When you are finished with the device, press the OFF button.

Sinco Signature Vegetable Cutter with Silo SC-18

AND **CLEANING and MAINTENANCE**

• **What to Do After Each Use:** • Clean the outer surface of the device and the joinery equipment with hot water, then dry it.

- While cleaning the device, make sure that the plug is not plugged in or the switch is off. Make sure it is. • Do not use acid or similar materials when cleaning the device. • While cleaning the device, do not wash the device with water. Otherwise electricity Water gets into the engine and causes it to burn.

• **Things to be done periodically;** • Maintenance should only be performed by trained persons. • Perform periodic maintenance of the device every 15 days. • Vegetable Chopping machines require minimal maintenance (motor and bearings are lubricated).

- It is recommended to check the wear and tension of the drive belt at least once a year. is done.
- Capacitors can remain electrically charged (residual voltage). While the device is operating It is recommended to discharge them with an insulating conductor (e.g. a screwdriver). • Depending on the frequency of use, the contactor maintenance of the device should be carried out by spraying dry air after the electrical connection is disconnected.
- Slicer blade maintenance; - Sharpen with a wet whetstone, making sure not to distort the cutting angles. • Cubic blade maintenance; - If the blades are damaged after a blow, use a small file to straighten them.
- Grater blade maintenance; - Grater blades cannot be filed. - If there is significant wear in the grater pits, replace them.

Sinco Signature Vegetable Cutter with Silo SC-18

F TROUBLESHOOTING

THE DEVICE DOES NOT WORK	<ol style="list-style-type: none">1. Check whether the device is plugged into the socket.2. Check the electrical connections.3. If the vegetable pressing arm of the device is in the air the device does not work.4. If the cover is open, the device will not work.5. If the door latch is not locked, the device will not work.
---------------------------------	--

SOUND IS COMING FROM THE DEVICE	<ol style="list-style-type: none">1. Check the cutting discs.2. Check whether there is material jam inside the hopper.3. If hard ingredients are chopped in the device, the blades may be damaged, check.4. If you hear noise from the engine, turn off the device. Stop and call the authorized service.
--	--

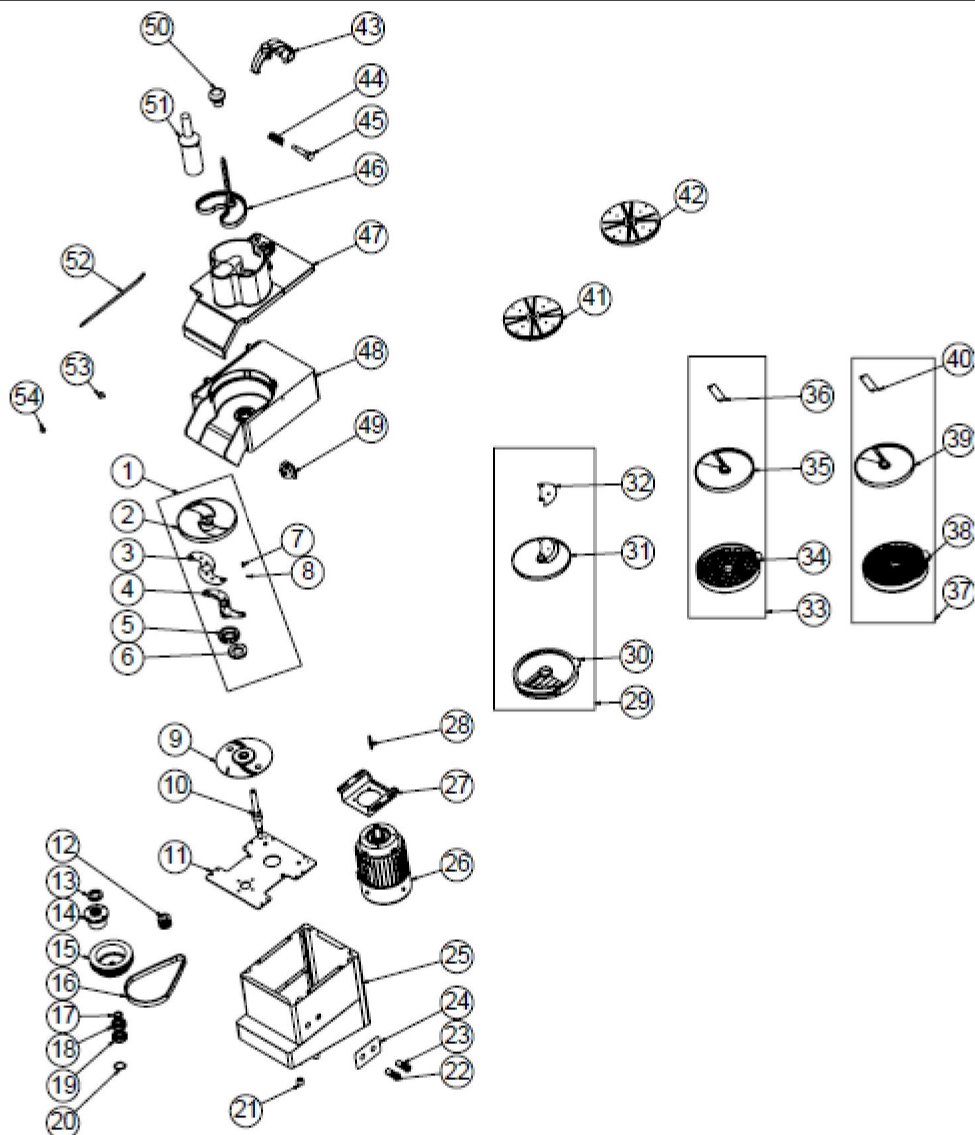
DEVICE STOPPED	<ol style="list-style-type: none">1. The device fails due to voltage drop. It may stop. In this case, check the voltage.2. The device is overloaded. It may stop when done. In this case, empty some of the material from the boiler and wait for the engine to cool down for a while.
-----------------------	---

- If Vegetable Chopping is not done in appropriate quality,
- If any of the safety functions are not working, ÿ Do not use the device.

***If the above problems still persist, contact our authorized services.**

Sinco Signature Vegetable Cutter with Silo SC-18

G SPARE PARTS LIST - DISASSEMBLED VIEW



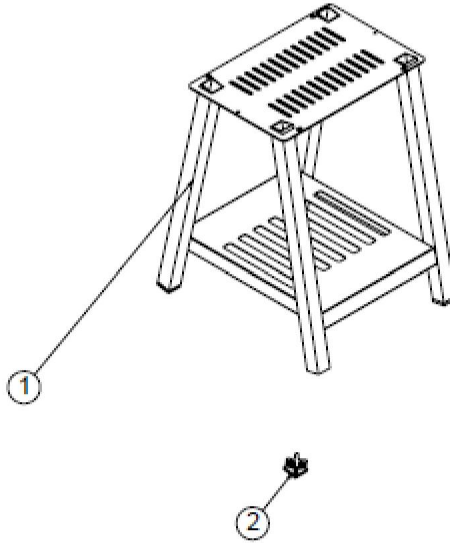
Sinco Signature Vegetable Cutter with Silo SC-18

G SPARE PARTS LIST - DISASSEMBLED VIEW

NO	NAME OF THE PRODUCT	PRODUCT CODE
	DISC BODY	YDK-ERS.SD-CN-0038
1	DISK DISK	M.BCK-SD-016
2	DISC PLASTIC CARRIER	M.ENJ-ERS-PLS-SDM-059
3	DISC NUT	M.ENJ-ERS-PLS-SDM-061
4	DySK PULU	M.ENJ-ERS-PLS-SDM-060
5	THE DISK IS DONE	M.YAY-ERS-024
6	ByLYA 4 MM	M.MUH-024
7 8	PHYRLATICS	M.ENJ-ERS-PLS-SDM-050
9	SLEEVE SHAFT	YTL-ERS.SD-KS-0124
10	ANOTHER BOARD OF BAGS	YSC-ERS.SD-LZ-0042
11 KASNAJI	MOTORCYCLE 12	YTL-ERS.SD-KS-0067
	FELT 30*47*7 13	M.CNT-KCE-003
	HARD 14	YDK-ERS.SD-CN-0015
	PULLEY 15	YDK-ERS.SD-CN-0044
	7 PJ 584 BELT 16	M.KYS-TKY-004
	FELT 20*28*6	M.CNT-KCE-014
17 BEARING	(6204 ZZ)	M.RLM-NRM-014
18 BEARING	(6303 2RS)	M.RLM-NRM-015
19 SEGMENTS	(471-32) 20	B-SEG-SYH-025
	BOTTOM RUBBER	M.ENJ-ERS-LST-011
	RED BUTTON (MOMENTARY) 21	M.ELK-SLT-BTL-010
22	GREEN LIGHT BUTTON	ERS.M.ELK-SLT-BTL-011
23	PANEL LABEL 24	M.AKS-ETK-LKS-ERS-SDM-011
CHASSIS		
	ELECTRIC MOTOR 25	M.ELK-MTR-RSM-066
26 ENGINE	CONNECTION PLATE	YSC-ERS.SD-LZ-0041
27	MAGNETIC SENSOR	M.ELK-SWC-KTG-001
28	LOWER	ARA-ERS.SD-F07
29	DISC TOP BLADE ALUMINIUM	YDK-ERS.SD-CN-0030
30	TOP BLADE	M.BCK-SD-011
31	20*20 SHEET PLASTIC	ARA-ERS.SD-F09
32	20*20 CUBE BLADES PLASTIC	M.ENJ-ERS-PLS-SDM-045
33	20*20 CUBIC KNIFE	M.BCK-SD-014
34	10*10 PLASTIC DISKS	ARA-ERS.SD-F08
35	10*10 CUBE PLASTIC BLADES	M.ENJ-ERS-PLS-SDM-046
36	10*10 CUBIC BLADE	M.BCK-SD-013
37	5MM MAKES	ARA-ERS.SD-0012
38	7MM MAKES	ARA-ERS.SD-0013
39	STEP LEVER	YDK-ERS.SD-CN-0033
40	YAY	M.YAY-ERS-023
41	HINGE SHAFT	YTL-ERS.SD-KS-0057
42	PLASTIC PRESSURE	M.ENJ-ERS-PLS-SDM-072
43	TOP COVER	YDK-ERS.SD-CN-0032

Sinco Signature Vegetable Cutter with Silo SC-18

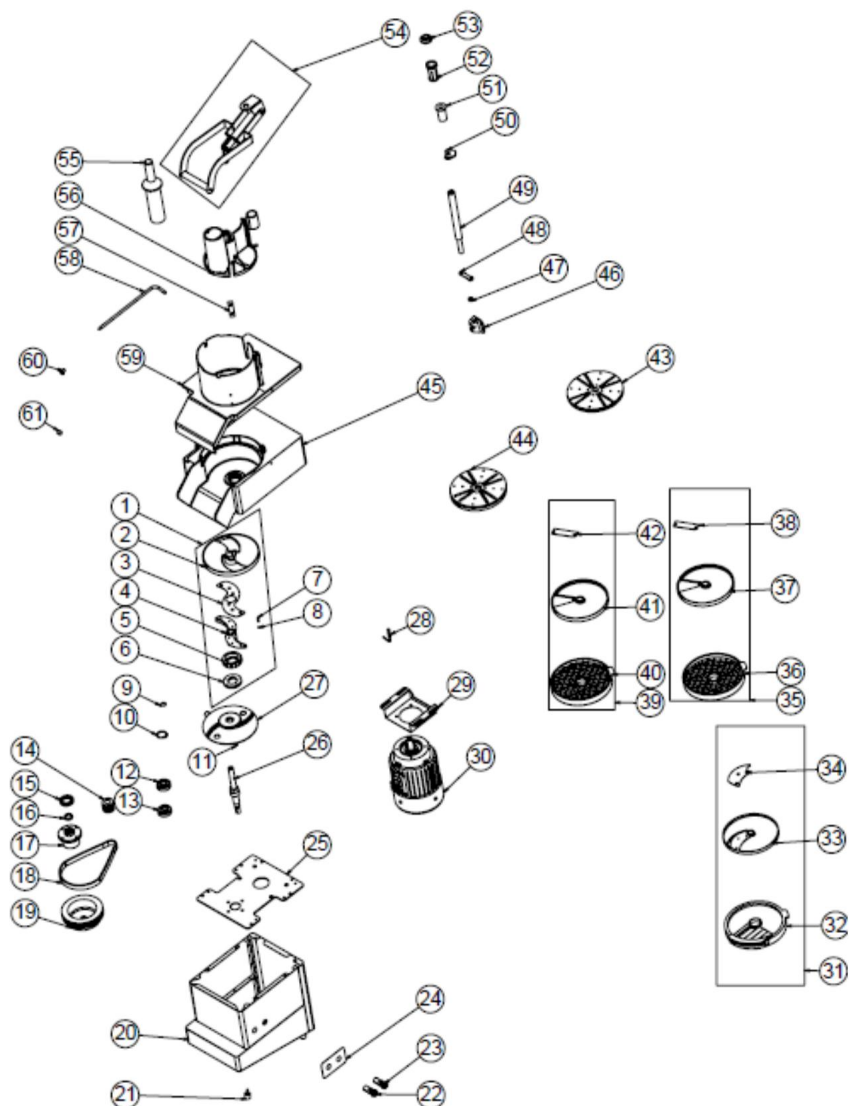
44	BODY	YDK-ERS.SD-CN-0031
45	LOCK PLASTIC	M.ENJ-ERS-PLS-SDM-051
46	HANDLE 47	M.ENJ-ERS-PLS-SDM-048
	PUSHER WEDGE 48	M.ENJ-ERS-PLS-SDM-044
	HINGE SHAFT 49	YTL-ERS.SD-KS-0065
	HINGE BUSH 50	M.ENJ-ERS-PLS-SDM-062
	MIKNATIS	M.MIK-ERS-002
51	DISC BODY	YDK-ERS.SD-CN-0038
52	DISK BIÇAYI	M.BCK-SD-016
	DISC PLASTIC CARRIER 53	M.ENJ-ERS-PLS-SDM-059
	DISC NUT 54	M.ENJ-ERS-PLS-SDM-061



NO	NAME OF THE PRODUCT	PRODUCT CODE
1	SIX	
2	PLASTIC WEDGE	M.PLS-ERS-011

Sinco Signature Vegetable Cutter with Silo SC-18

G SPARE PARTS LIST - DISASSEMBLED VIEW



Sinco Signature Vegetable Cutter with Silo SC-18

G SPARE PARTS LIST - DISASSEMBLED VIEW

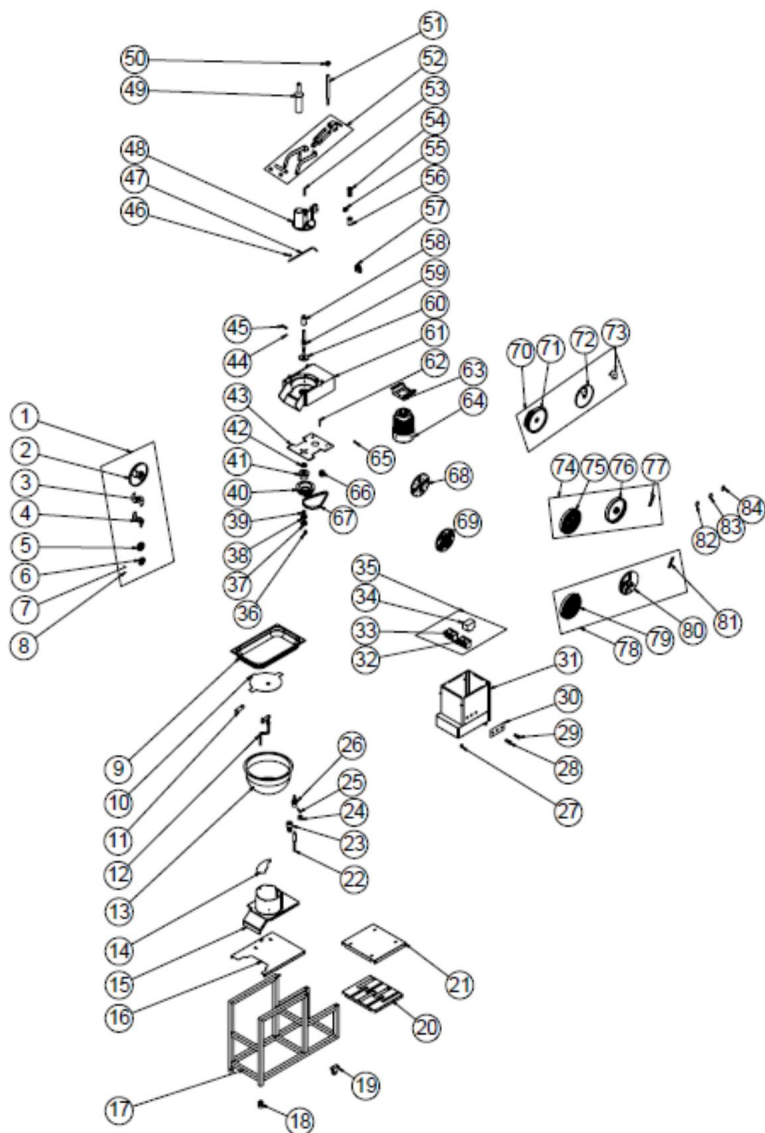
NO	PRODUCT	PRODUCT CODE
1	NAME ADJUSTABLE DISC SET	EMP.300-F.01
2	DISC BODY	YDK-ERS.SD-CN-0038
3	DISC BLADE	M.BCK-SD-016
4	DISC PLASTIC CARRIER	M.ENJ-ERS-PLS-SDM-059
	DISC NUT 5	M.ENJ-ERS-PLS-SDM-061
	DISC WASHER 6	M.ENJ-ERS-PLS-SDM-060
	DISC SPRING 7	M.YAY-ERS-024
	BALL 4 MM 8 9	M.MUH-024
	RINGS (471-32)	B-SEG-SYH-025
	10 SEGMENTS (471-17)	B-SEG-SYH-011
	11 SEGMENTS (472-47)	B-SEG-SYH-012
	12 BEARING (6204 ZZ)	M.RLM-NRM-014
	13 BEARING (6303 2RS)	M.RLM-NRM-015
	14 MOTOR PULLEY 30*47*7	YTL-ERS.SD-KS-0067
17	15 16 20*28*6	M.CNT-KCE-003
	BUSHING 18 7 PJ 584	M.CNT-KCE-014
	BELT 19	YDK-ERS.SD-CN-0015
	PULLEY 20 CHASSIS	M.KYS-TKY-004
	21 LOWER STOP	YDK-ERS.SD-CN-0044
	TIRE RED	
	BUTTON (LIGHT) 22 GREEN	M.ENJ-ERS-LST-011
	LIGHT BUTTON 23 24	M.ELK-SLT-BTL-010
	PANEL LABEL 25 BOTTOM	ERS.M.ELK-SLT-BTL-011
	PANEL 26 BUSHING	M.AKS-ETK-LKS-ERS-SDM-011
	SHAFT 27 FIRLATICI 28	YSC-ERS.SD-LZ-0042
	MAGNETIC SENSOR	YTL-ERS.SD-KS-0124
	29 MOTOR	M.ENJ-ERS-PLS-SDM-050
	CONNECTION SACI ELECTRIC	M.ELK-SWC-KTG-001
	MOTOR 30 31 LOWER DISC 32	YSC-ERS.SD-LZ-0041
	TOP BLADE	M.ELK-MTR-RSM-102
	ALUMINUM 33	ARA-ERS.SD-F07
	TOP BLADE 34 20*20 BLADE PLASTIC	YDK-ERS.SD-CN-0030
	35 20*20 CUBE	M.BCK-SD-011
	BLADE PLASTIC 36 20*20 CUBE	ARA-ERS.SD-F09
	BLADE 37 10*10 DISC PLASTIC 38 10*10	M.ENJ-ERS-PLS-SDM-045
	CUBE BLADES PLASTIC 39	M.BCK-SD-014
	10X10 CUBE BLADES	ARA-ERS.SD-F08
		M.ENJ-ERS-PLS-SDM-046
		M.BCK-SD-013
	40 5MM MAKES	ARA-ERS.SD-0012
	41 7 MM YIELD	ARA-ERS.SD-0013
	42 BODY	YDK-ERS.SD-CN-0031
	43 LOCK PLASTIC	M.ENJ-ERS-PLS-SDM-051
	44 MIKNATIS	M.MIK-ERS-010
	45 MIKNATIS BAGS	YSC-ERS.SD-LZ-0123
	46 MECHANISM SHAFT	YTL-ERS.SD-KS-0116

Sinco Signature Vegetable Cutter with Silo SC-18

47	TOP FLOOR PLASTIC	M.ENJ-ERS-PLS-SDM-081
48	LOWER POLYAMIDE	YTL-ERS.SD-KS-0118
49	TOP CENTERING POLYAMID 50	YTL-ERS.SD-KS-0117
	UPPER FIXING ELEMENT	YTL-ERS.SD-KS-0115
51	HANDLE	ARA-ERS.SD-0016
52	PUSHER INNER	M.ENJ-ERS-PLS-SDM-079
53	ALUMINUM	YDK-ERS.SD-CN-0043
54	HOPPER BLADE	M.ENJ-ERS-PLS-SDM-080
55	HINGE SHAFT	YTL-ERS.SD-KS-0065
56	COVERS	YDK-ERS.SD-CN-0041
57	HINGE BUSH	M.ENJ-ERS-PLS-SDM-062
58	MIKNATIS	M.MIK-ERS-002
59	DISC BODY	YDK-ERS.SD-CN-0038
60	DISK BIÇAYI	M.BCK-SD-016
61	DISC PLASTIC CARRIER	M.ENJ-ERS-PLS-SDM-059

Sinco Signature Vegetable Cutter with Silo SC-18

G SPARE PARTS LIST - DISASSEMBLED VIEW



Sinco Signature Vegetable Cutter with Silo SC-18

G SPARE PARTS LIST - DISASSEMBLED VIEW

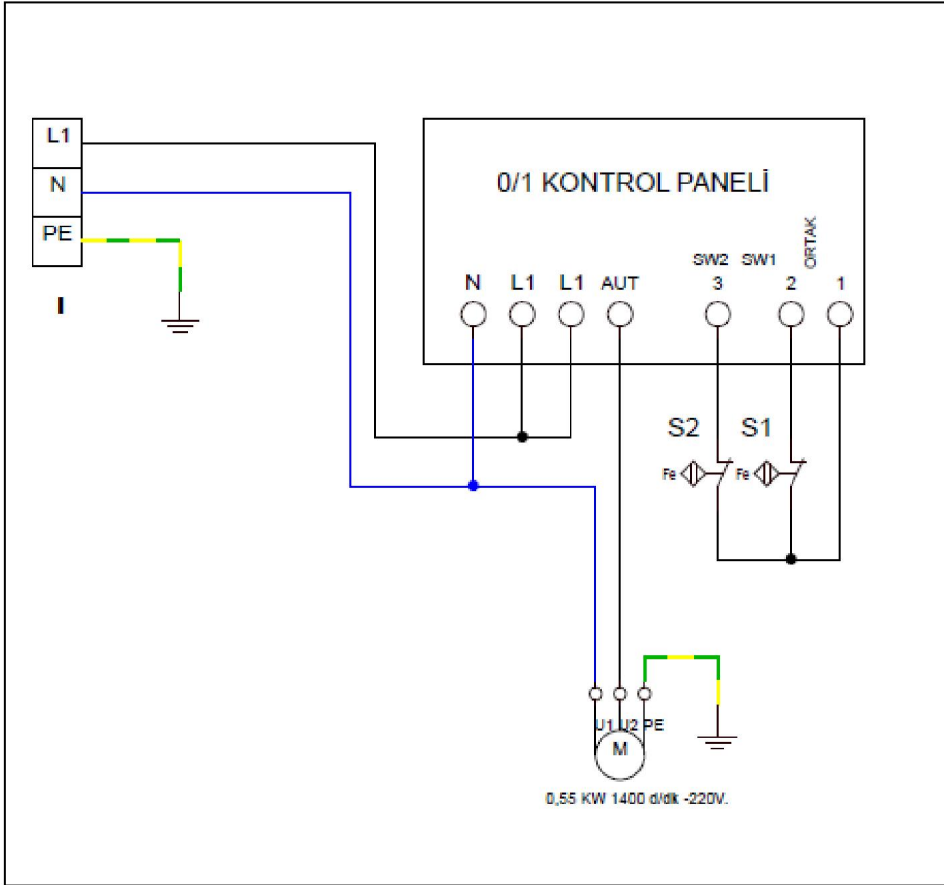
NO	NAME ADJUSTABLE DISC SET	PRODUCT CODE
1 2	DISC BODY 3	EMP.300-F.01 YDK-ERS.SD-CN-0038
	DISC BLADE 4 DISC	M.BCK-SD-016
	PLASTIC CARRIER 5 DISC NUT 6	M.ENJ-ERS-PLS-SDM-059
	DISC WASHER 7 DISC	M.ENJ-ERS-PLS-SDM-061
	SPRING 8 BALL 4	M.ENJ-ERS-PLS-SDM-060
	MM 9 STANDARD	M.YAY-ERS-024
	GASTRONOME	M.MUH-024
	CUVET GN 1/1-150 10 FUNNLE INNER SHEET 11 HANDLE	EMP.11150
	12 MIX CLIMBING	YSC-ERS.SD-LZ-0112
	HANDLE 13 WIN	M.AKS-KLP-BKL-028
	(35 *21)	YTL-ERS.SD-KS-0112
		M.MTS-ERS-LK-001
	14 DIRECTION PLASTIC 15	M.ENJ-ERS-PLS-SDM-078
	COVER 16	YDK-ERS.SD-CN-0041
	TOOL STORAGE PLATE 17	YSC-ERS.SD-LZ-0127
	LOWER STAND CHASSIS	
	18 FOOT 19	M.AKS-AYK-PLS-008
	WHEEL 20	M.AKS-TKR-OZL-001
	LOWER STAND SHELF SHEET	YSC-ERS.SD-LZ-0125
	21 MACHINE MOUNTING PLATE 22	YSC-ERS.SD-LZ-0124
	CENTERING SHAFT 23	YTL-ERS.SD-KS-0108
	MECHANISM ELEMENT 24	YTL-ERS.SD-KS-0107
	MECHANISM LOCATION 25	YTL-ERS.SD-KS-0109
	LOCKING MECHANISM PIN 26	YTL-ERS.SD-KS-0110
	CENTERING PIN ST ELEMENT 27	YTL-ERS.SD-KS-0106
	LOWER RUBBER RUBBER 28	M.ENJ-ERS-LST-011
	RED BUTTON (MOMENTARY)	M.ELK-SLT-BTL-010
	29 GREEN LIGHT BUTTON 30	ERS.M.ELK-SLT-BTL-011
	PANEL LABEL 31	M.AKS-ETK-LKS-ERS-SDM-014
	CHASSIS 32	
	CONTACTOR LC1D09M7 33	ERS.M.ELK-KNT-KNT-027
	GZ1AN11 CONTACTOR 34	ERS.M.ELK-KNT-KNT-029
	ENGINE PROTECTION SWITCH 35	ERS.M.ELK-SLT-MK-005
	WIRING HARNESS 36	M.ELK-KD-SD-005
	RING (471-17)	B-SEG-SYH-011
	37 BEARING (6204 ZZ)	M.RLM-NRM-014
	38 BEARING (6303 2RS)	M.RLM-NRM-015
	39 SEAL 20*28*6 40	M.CNT-KCE-014
	PULLEY 41	YDK-ERS.SD-CN-0044
	SLEEVE	YDK-ERS.SD-CN-0015

Sinco Signature Vegetable Cutter with Silo SC-18

42 FELT 30*47*7	M.CNT-KCE-003
43 ALT TABLE OF SACKS	YSC-ERS.SD-LZ-0042
44 MIKNATIS	M.MIK-ERS-010
45 MIKNATIS BAGS	YSC-ERS.SD-LZ-0123
46 HINGE BUSH	M.ENJ-ERS-PLS-SDM-062
47 HINGE SHAFT 48	YTL-ERS.SD-KS-0065
INNER ALUMINUM 49 PUSH	YDK-ERS.SD-CN-0043
WEDGE 50 UPPER	M.ENJ-ERS-PLS-SDM-079
FIXING ELEMENT	YTL-ERS.SD-KS-0115
51 MECHANISM SHAFT	YTL-ERS.SD-KS-0116
52 HANDLES	ARA-ERS.SD-0016
53 CHAMBER BLADE	M.ENJ-ERS-PLS-SDM-080
54 TOP CENTERING POLYAMIDE 55 TOP	YTL-ERS.SD-KS-0117
STOP PLASTIC	M.ENJ-ERS-PLS-SDM-081
56 ALT POLYAMÿTÿ	YTL-ERS.SD-KS-0118
57 LOCK PLASTIC	M.ENJ-ERS-PLS-SDM-051
58 MIDDLE LAUNCHER SHAFT	YTL-ERS.SD-KS-0114
59 SLEEVE SHAFT	YTL-ERS.SD-KS-0124
60 BODY TOP SHEET	YSC-ERS.SD-LZ-0110
61 BODY	YDK-ERS.SD-CN-0031
62 MAGNETIC SENSOR	M.ELK-SWC-KTG-001
63 ENGINE CONNECTION PLATE	YSC-ERS.SD-LZ-0041
64 ELECTRIC MOTORS	M.ELK-MTR-RSM-101
65 MIKNATIS	M.MIK-ERS-002
66 KASNAÿI MOTORCYCLE	YTL-ERS.SD-KS-0067
67 7 PJ 584 BELT	M.KYS-TKY-004
68 7 MM YIELD	ARA-ERS.SD-0013
69 5MM MAKES	ARA-ERS.SD-0012
70 French Fries Knife + Bottom Disc	EMP.300-F.06+F.07
71 LOWER DISC	ARA-ERS.SD-F07
72 TOP BLADE ALUMINUM 73 TOP	YDK-ERS.SD-CN-0030
BLADE 74 20x20	M.BCK-SD-011
Cubic Disc + Blade	EMP.300-F.12+F.09
75 20*20 BLADE PLASTIC	ARA-ERS.SD-F09
76 20*20 CUBE BLADES PLASTIC	M.ENJ-ERS-PLS-SDM-045
77 20*20 CUBIC BLADE 78	M.BCK-SD-014
10x10 Cubic Disc + Blade	EMP.300-F.11+F.08
79 10*10 PLASTIC DÿSK	ARA-ERS.SD-F08
80 10*10 CUBE BLADES PLASTIC	M.ENJ-ERS-PLS-SDM-046
81 10*10 CUBIC BLADE	M.BCK-SD-013
82 SEGMENTS (471-32)	B-SEG-SYH-025
83 SEGMENTS (471-17)	B-SEG-SYH-011
84 SEGMENTS (472-47)	B-SEG-SYH-012

Sinco Signature Vegetable Cutter with Silo SC-18

H ELECTRICAL CIRCUIT DIAGRAM



.	TERMİNAL
M	MOTOR
S1	MAGNETIC COVER SENSOR
S2	MAGNETIC LOCK SENSOR