



## *Part 1: The Heartfelt Heirloom*

In the small town of Hartsville, where secrets nestled like whispers in the wind, a treasured heirloom quilt vanished from the historical society's exhibit. Known as the "Heartfelt Heirloom", the quilt was a symbol of love and resilience, passed down through generations. Its disappearance sent shock waves through the close-knit community, leaving the townsfolk bewildered and the historical society's president, Mrs. Eleanor Hartfield, heartbroken. The quilt featured a distinctive heart motif, and its sentimental value surpassed its material worth.

To Be Continued...

### Fabric Requirements

1/2 yd Background fabric

1 - 2 1/2" Strip by WOF or 10 1/2" square each of Red, Yellow, Pink, and Blue (or 2 medium to dark prints, one bright light, one soft light)

2 - 10 1/2" Squares each of Red and Pink (or 2 dark 2 light)

3 - 1 1/2" Strips for border of Pink (or light)

3 - 2 1/2" Strips for binding of Red (or dark)

## Chapter 1.1: Cutting

From Background Cut:

4 - 1 1/2 Squares (A)

18 - 2 1/2" Squares (B)

8 - 4 1/2" Squares (C)

2 - 2 1/8" Squares (D)

Note: if using directional fabric cutting dimensions are given in width by height.

From Yellow (or bright light) 2 1/2 Strip Cut:

2 - 2 1/2" x 5" Rectangles (E) (set the rest aside for future clues)

From Red (or medium/dark) 2 1/2" Strip Cut:

1 - 8 1/2" by 2 1/8" Rectangle (F)

From Blue (or medium/dark) 2 1/2" Strip Cut:

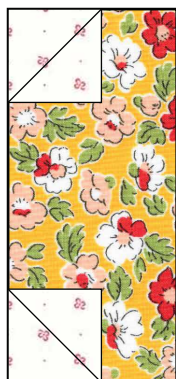
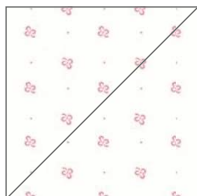
2 - 2 1/2" x 6 1/2 Rectangles (G)

From Each of the Red and Pink (or 2 dark and 2 light) 10 1/2" Squares Cut:

2 - 4 1/2" by 8 1/2" rectangles (H)

## Chapter 1.2: Sew and Flip Corners

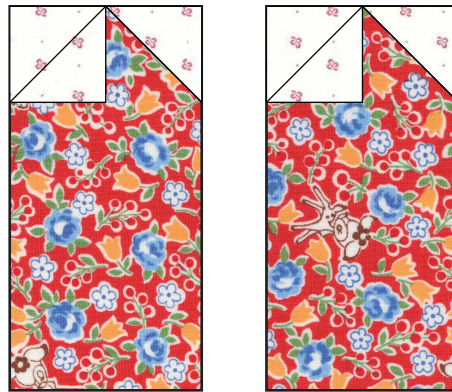
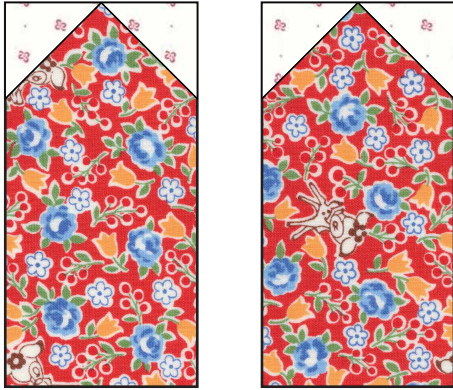
Mark a diagonal line across each of the background pieces.



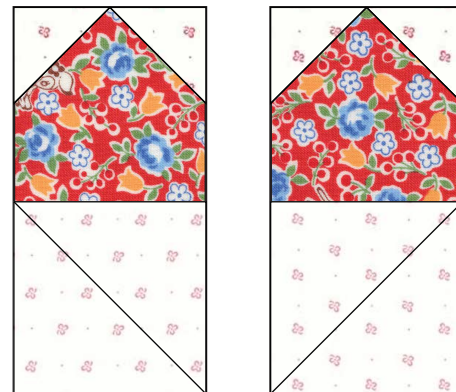
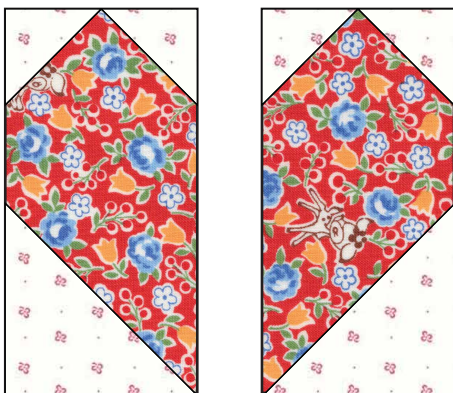
Place two A pieces on the corners of the left side of an E piece. Sew directly on the diagonal marked line. If the E pieces are directional make them mirrored with the corners on the left of one piece then the corners on the right for the second piece. Trim the corners off leaving a 1/4" seam allowance and press toward the E pieces. Set aside for later clues.



Place one B piece on the right top corner of each of the H pieces. Sew directly on the diagonal marked line. Trim the corners off leaving a 1/4" seam allowance and press toward the H piece. Repeat on the left side



Place one C piece on the bottom left corner of the 4 1/2" side of one of the H pieces. Sew directly on the diagonal marked line. Repeat with the same print H piece, except, put the C piece on the right side. Trim the corners off leaving a 1/4" seam allowance and press toward the H pieces.



Matching seams sew the two halves of your heart block together. Repeat to make a total of 4 heart blocks. Set aside for later clues.

Place two D pieces on the corners of the top (long) side of the F piece. Sew directly on the diagonal marked lines. Trim the corners off leaving a 1/4" seam allowance and press toward the F piece. Set aside for later clues.

